

U.S. PUBLIC LAND SURVEY MONUMENT RECORD

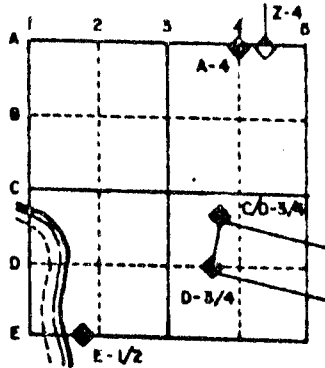
For Public Land Survey Corners in the
T. 2N., R. 10E.

CORNER CODE INDEX

	1	2	3	4	5	6	7	8	9	10	11	12	13	14	15	16	17	18	19	20	21	22	23	24	25
A																									
B																									
C	6																								
D																									
E																									
F																									
G	7																								
H																									
J																									
K																									
L	18																								
M																									
N																									
O																									
P	19																								
Q																									
R																									
S																									
T	30																								
U																									
V																									
W																									
X	31																								
Y																									
Z																									

PLACE MONUMENT SYMBOL (◆) AT PROPER LOCATION ON ABOVE INDEX

EXAMPLE



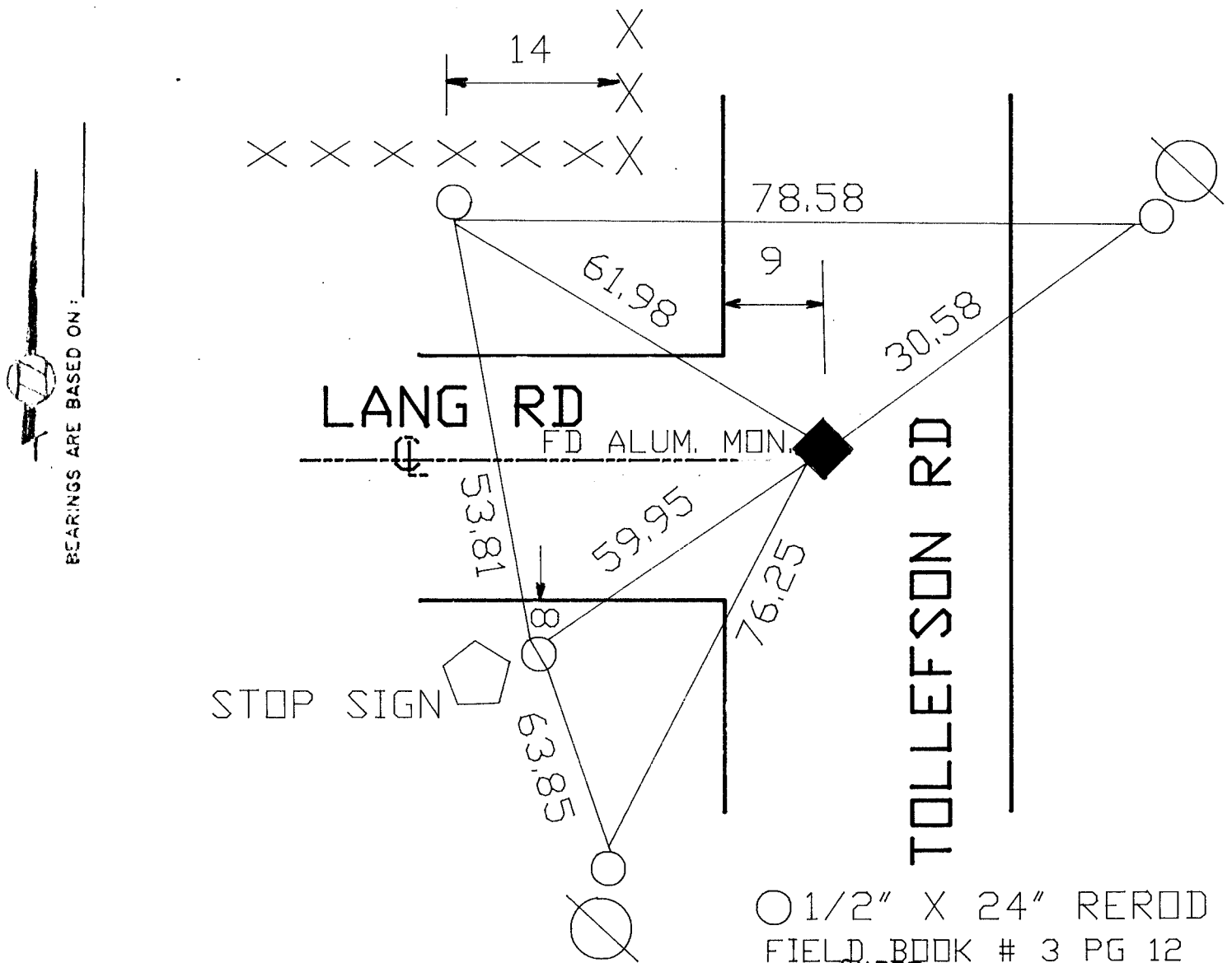
SPRING VALLEY TWP
ROCK COUNTY WI

IF AVAILABLE
STATE PLANE COORDINATES

North (Y) 235,551.83 Eleve. (Z) _____
 East (X) 2,196,827.03 Zone _____
 Hor. Datum _____ Vert. Datum _____

◆ CORNER MONUMENT

○ WITNESS MONUMENT



○ 1/2" X 24" REROD
 FIELD BOOK # 3 PG 12
 SHEET _____ OF _____

CORNER CODE: J 21

(B) Describe any record evidence, monument evidence, occupational evidence, testimonial evidence or any other material evidence you considered, and whether the monument was found or placed.

1867 LOCKE VOL 1 PG 285 FOUND N BT & OLD STAKE. SET BR O. STAKE SURROUNDED BY 3 FLAT LIMESTONES. SHOWS 2693.46' TO S 1/4 CORNER OF SECTION 12 AND 2640' TO W 1/4 CORNER OF SECTION 12.

1891 BLEEDORN VOL 2 PG 451 FOUND BT STUMP AND REMAINS OF STAKE. SET HH 17X14X8 SURROUNDED BY 3 HARDHEADS.

1968 BATTERMAN JR. VOL 4 PG 392 FOUND HARDHEAD SURROUNDED BY 3 HARDHEADS. REFERENCED SAME.

1976 BARNES VOL 5 PG 192 FOUND FLAGGED CARPENTERS NAIL THAT WAS COVERED BY ASPHALT. PLACED ALUMINUM MONUMENT AND REFERENCED SAME.

FOUND ALUMINUM MONUMENT AND REFERENCED SAME. 2698.14 TO S 1/4 CORNER OF SECTION 12 AND 2643.43 TO W 1/4 CORNER OF SECTION 12.

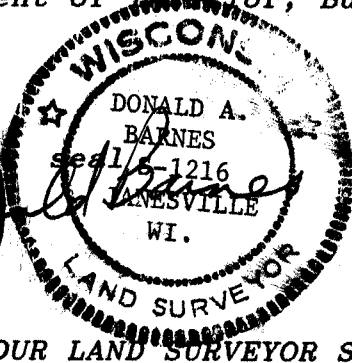
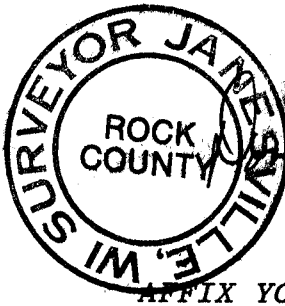
C) Was the corner restored through acceptance of (1) an obliterated evidence location, or, (2) a found perpetuated location?

ACCEPTED FOUND PERPETUATED LOCATION.

D) Describe any material discrepancy between the location of the corner as restored or reestablished and the location of that corner as previously restored or reestablished by distance and direction. Show the discrepancy on the plan view drawing under (a), above. Show the distances between the corner as previously restored or reestablished and (1) the corner as restored or reestablished, and (2) to at least 4 of the witness monuments shown on the drawing in (a), above.

(E) Was the corner reestablished through lost corner proportionate methods? If so, show the method, including the directions and distances to other public land survey corners used as evidence or used for proportioning the corner location.

I, Donald Barnes, hereby certify that the corner points as identified by the corner code index were, in a field survey on, October 10, 1989, established, re-established, monumented, re-monumented, recovered or restored as expressed below and in conformance with the regulations and rules as required in the current manual of survey instructions of the United States Department of Interior, Bureau of Land Management.



AFFIX YOUR LAND SURVEYOR SEAL

COUNTY SURVEYOR FILING DATA

Date of computer entry _____

Date microfilmed _____

Number of included sheets _____
CORNER CODE