

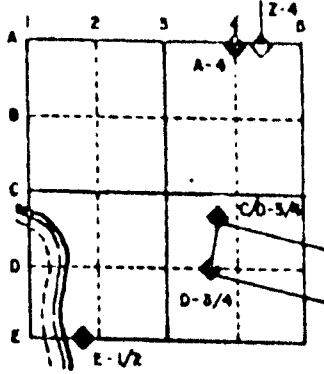
U.S. PUBLIC LAND SURVEY MONUMENT RECORD

For Public Land Survey Corners in the
T. 2 N., R. 10 E.
CORNER CODE INDEX

	1	2	3	4	5	6	7	8	9	10	11	12	13	14	15	16	17	18	19	20	21	22	23	24	25
A																									
B																									
C	6																								
D		5																							
E			4																						
F				3																					
G					2																				
H																									
I																									
J	7																								
K		8																							
L			9																						
M				10																					
N					11																				
O						12																			
P	13																								
Q		14																							
R			15																						
S				16																					
T					17																				
U						18																			
V							19																		
W								20																	
X									21																
Y										22															
Z											23														
												24													
													25												
														26											
															27										
																28									
																	29								
																		30							
																			31						
																				32					
																					33				
																						34			
																							35		
																								36	

PLACE MONUMENT SYMBOL (◆) AT PROPER
 LOCATION ON ABOVE INDEX

EXAMPLE



SPRING VALLEY TWP
ROCK COUNTY WI

IF AVAILABLE
 STATE PLANE COORDINATES

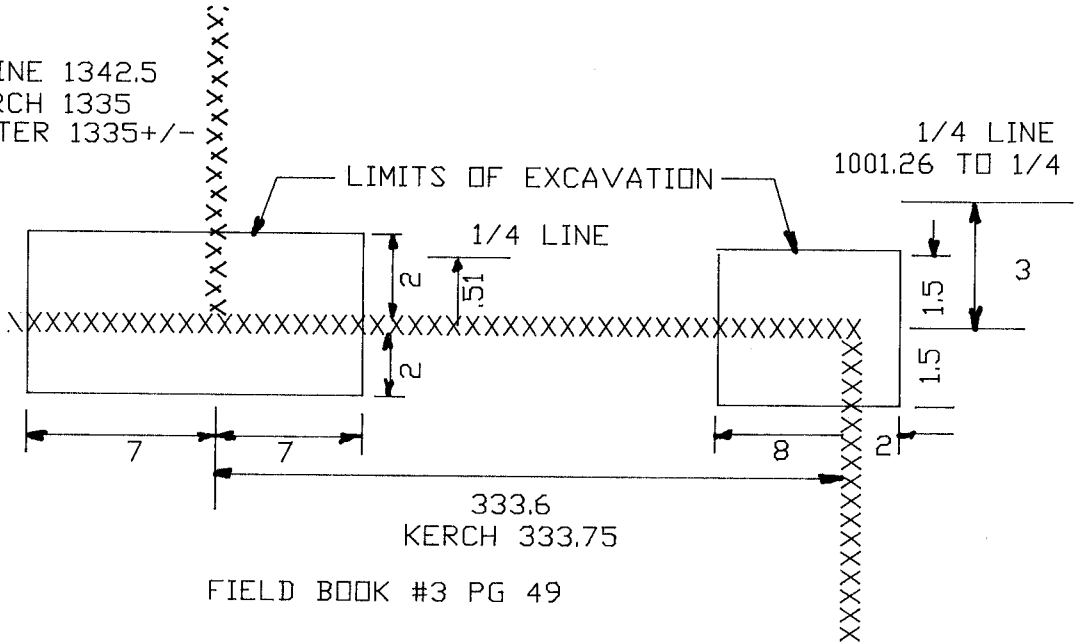
North (Y) _____ Eleve. (Z) _____
 East (X) _____ Zone _____
 Hor. Datum _____ Vert. Datum _____

◆ CORNER MONUMENT

○ WITNESS MONUMENT

BEARINGS ARE BASED ON:

TO N/S 1/4 LINE 1342.5
 KERCH 1335
 BARNES TO CENTER 1335+/-



FIELD BOOK #3 PG 49

(B) Describe any record evidence, monument evidence, occupational evidence, testimonial evidence or any other material evidence you considered, and whether the monument was found or placed.

1869 LEE VOL 1 PG 351 PLACED LIMESTONE AT THE S 1/16TH CORNER OF THE NE 1/4 OF SECTION 30 AND CALLS FOR 1336.01 TO THE CENTER AND EAST QUARTER CORNERS OF SECTION 30.

1911 KERCH VOL 3 PG 66 AT THE S 1/16TH CORNER HE FOUND STONE SET BY LEE AND DROVE GAS PIPE 6.5' LONG AND AT THE PROPERTY CORNER THAT IS 333.75 TO THE EAST, HE DROVE A 6.5' LONG GAS PIPE. CALLS FOR 1335 TO THE CENTER AND 1335 TO THE E 1/4 CORNERS OF SECTION 30.

DUG AS SHOWN ON SKETCH AND FOUND NOTHING. SEARCHED LARGER AREA WITH METAL LOCATOR.

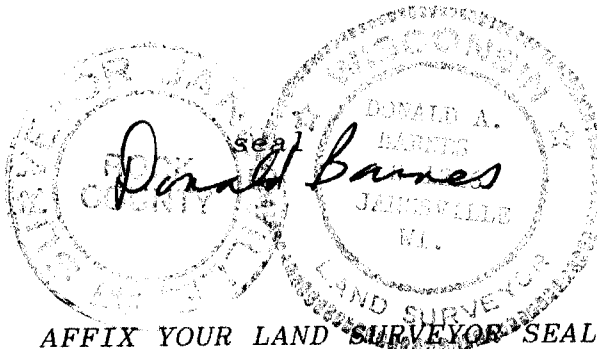
C) Was the corner restored through acceptance of (1) an obliterated evidence location, or, (2) a found perpetuated location?

DID NOT REPLACE CORNERS.

D) Describe any material discrepancy between the location of the corner as restored or reestablished and the location of that corner as previously restored or reestablished by distance and direction. Show the discrepancy on the plan view drawing under (a), above. Show the distances between the corner as previously restored or reestablished and (1) the corner as restored or reestablished, and (2) to at least 4 of the witness monuments shown on the drawing in (a), above.

(E) Was the corner reestablished through lost corner proportionate methods? If so, show the method, including the directions and distances to other public land survey corners used as evidence or used for proportioning the corner location.

I, Donald Barnes, hereby certify that the corner points as identified by the corner code index were, in a field survey on, **AUGUST 6** 1991, established, re-established, monumented, re-monumented, recovered or restored as expressed below and in conformance with the regulations and rules as required in the current manual of survey instructions of the United States Department of Interior, Bureau of Land Management.



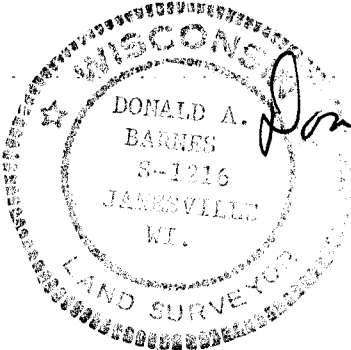
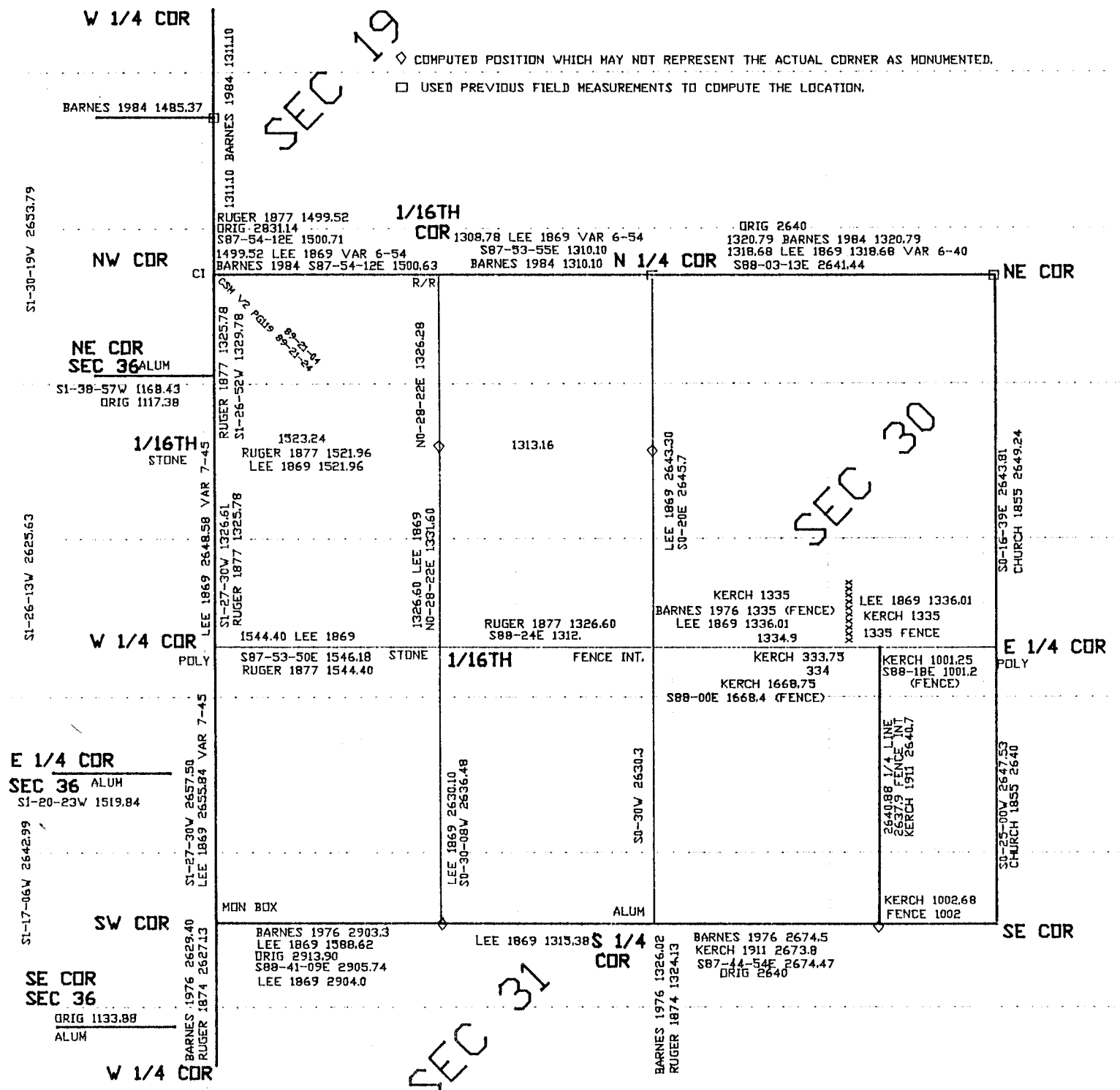
COUNTY SURVEYOR FILING DATA

Date of computer entry _____

Date microfilmed _____

Number of included sheets _____
CORNER CODE

THE GEN. & BARNER COMPANY, ST. LOUIS



Donald Barnes
2 OF 2

T 5