

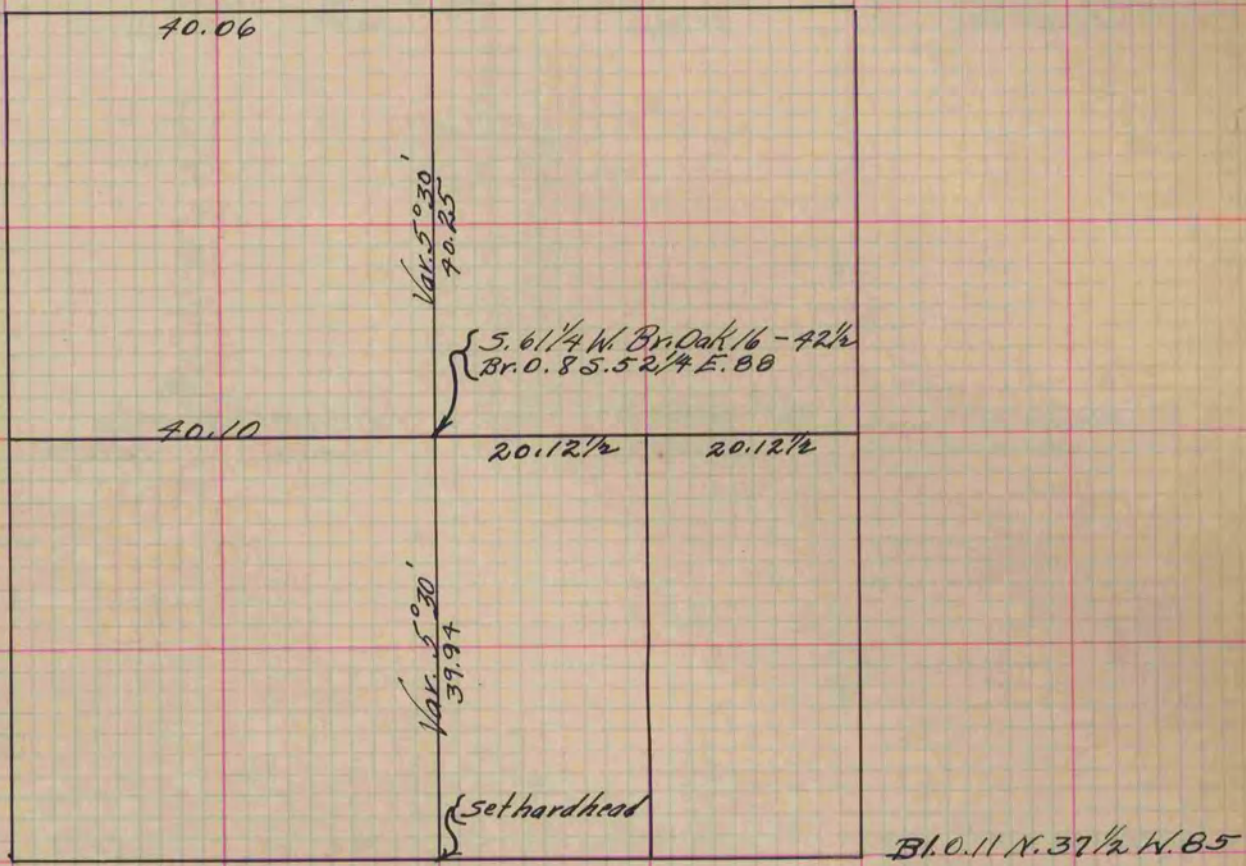
PLAT AND RECORD

Of a Survey on Section 36 T 1 R 13 E. of the 4 P. M. in Turtle Township
Rock County, Wisconsin, made March the 25th 1861

I hereby certify that the following is a correct record of said survey as made by me.

COUNTY BUILDING
IN CITY OF BELOIT

(Signed) E. F. Hobart Deputy
RATB County Surveyor.



Copied from Page 166 Vol. One Original County Surveyors Record.