

PLAT AND RECORD

COUNTY BUILDING
IN CITY OF BELOIT

Of a Survey on Section 10 T 3 R 12 E. of the 4 P. M. in Janesville Township

Rock County, Wisconsin, made August the 17th 1921

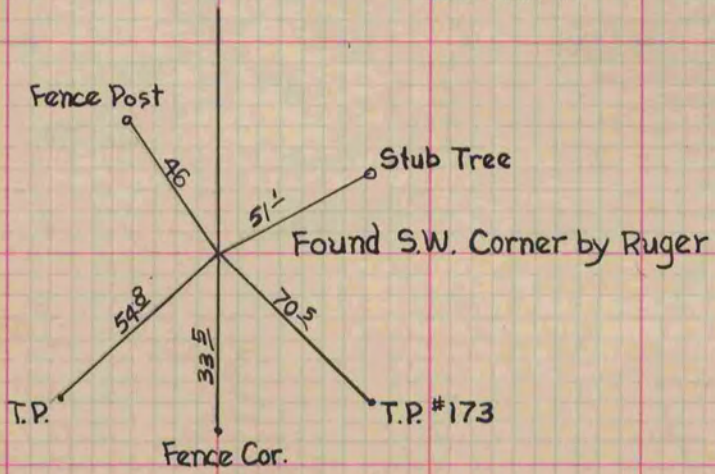
I hereby certify that the following is a correct record of said survey as made by me.

(Signed) Alex W. Ely

County Surveyor.

Sec 9

Section 10



16

15