

PLAT AND RECORD

Of a Survey on Section 27 T 3 R 13 E. of the 4 P. M. in Harmony Township

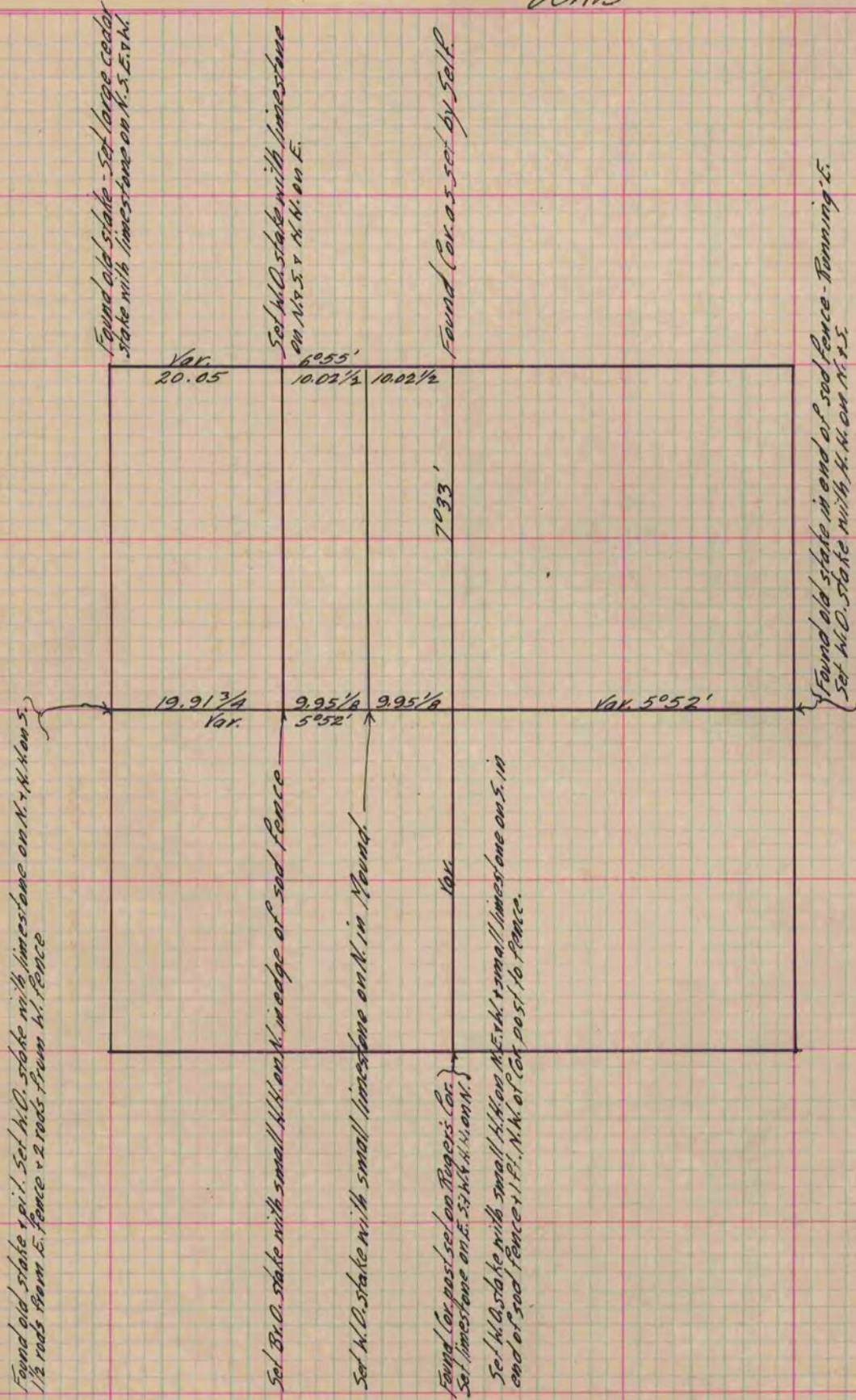
Rock County, Wisconsin, made April the 17 1868

I hereby certify that the following is a correct record of said survey as made by me.

COUNTY BUILDING
IN CITY OF BELoit

(Signed) S.D. Locke
S.D.L.

County Surveyor.



Copied from P. 265 Vol. 1 County Surveyors Record.