

# U.S. PUBLIC LAND SURVEY MONUMENT RECORD

For Public Land Survey Corners in:

WI ADMINISTRATIVE CODE A-E 7.08 REQUIREMENT

T. 1 N., R. 11 E

CORNER CODE INDEX

1	2	3	4	5	6	7	8	9	10	11	12	13	14	15	16	17	18	19	20	21	22	23	24	25
A	6	5	4	3	2	1																		
B																								
C																								
D																								
E																								
F	1	8	9	10	11	12																		
G																								
H																								
I	13	11	16	15	14	13																		
J																								
K																								
L	18	17	16	15	14	13																		
M																								
N																								
O																								
P	19	20	21	22	23	24																		
Q																								
R																								
S	30	29	28	27	26	25																		
T																								
U																								
V																								
W																								
X																								
Y																								
Z																								

NEWARK TWP

ROCK COUNTY WI

IF AVAILABLE  
ROCK COUNTY COORDINATES PERFERRED

North \_\_\_\_\_ Elev. \_\_\_\_\_

East \_\_\_\_\_

Hor. Datum \_\_\_\_\_ Vert. Datum \_\_\_\_\_

LATITUDE \_\_\_\_\_ ELLIPS. HT. \_\_\_\_\_

LONGITUDE \_\_\_\_\_

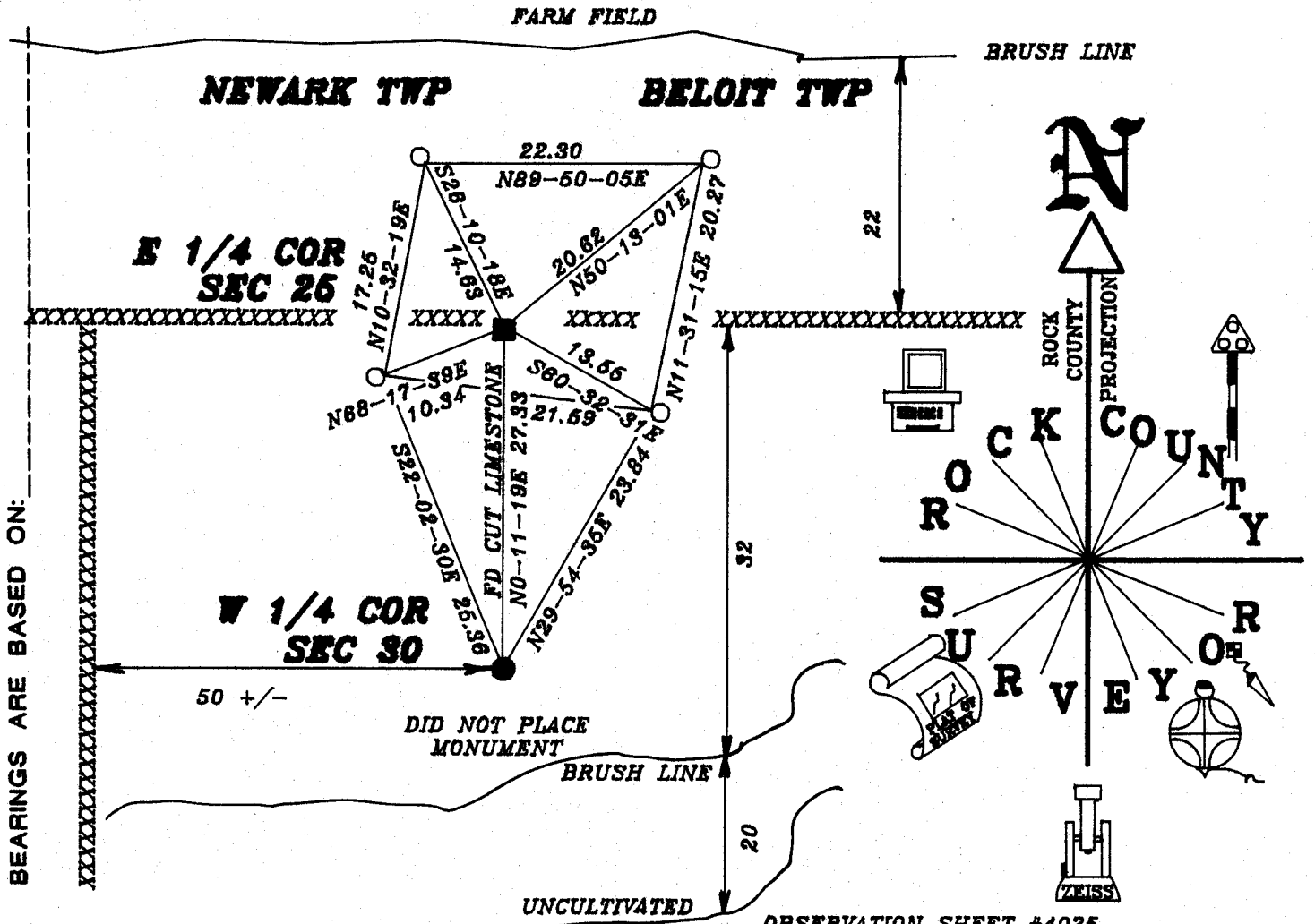
GPS (X) \_\_\_\_\_ TRAVERSE (X) \_\_\_\_\_

BASED ON THE FOLLOWING CONTROL:

PLACE MONUMENT SYMBOL  AT PROPER LOCATION ON ABOVE INDEX

 CORNER MONUMENT       WITNESS MONUMENT

(a)



BEARINGS ARE BASED ON:

*1/12/98*  
*Ronald [Signature]*

- OBSERVATION SHEET #4025
- E 1/4 COR SEC 25. CUT LIMESTONE MAGNETS ON SOUTH & WEST SIDE OF STONE. SET CARSONITE POST NEXT TO STONE.
- W 1/4 COR SEC 30. SEARCHED AREA WITH METAL LOCATOR & FD NOTHING. DID ~~NOT~~ PLACE MONUMENT.

FIELD BOOK \_\_\_\_\_ PAGE # \_\_\_\_\_

SHOW A PLAN VIEW DRAWING DEPICTING THE CORNER MONUMENT AND SURROUNDING PHYSICAL FEATURES INCLUDING THE EXCAVATION AREA AND DEPTH.

PLANNING & ZONING COMMITTEE ADOPTED THE ABOVE FORM ON 12/2/1982

CORNER CODE T-25

NE600

(B) Describe any record evidence, monument evidence, occupational evidence, testimonial evidence or any other material evidence you considered, and whether the monument was found or placed.

- 1833 SEP MULLETT NORTH ON EAST SIDE SECTION 25
  - 969.54' BUR OAK 14 IN DIAMETER
  - 2211' ENTER WET PRAIRIE
  - 2640 SET QUARTER SECTION POST BUR OAK 6 N17W 1.84, BUR OAK 4 N53E 1.40 (FOR E 1/4 COR SEC 25)
  - 2706 LEAVE WET PRAIRIE
  - 5280 SET POST CORNER SECTIONS 24 & 25 BUR OAK 10 S49W .87, BLACK OAK 12 N47W 1.38  
LAND EXCEPT WET PRAIRIE SECOND RATE WHITE, BLACK & BUR OAK
- 1871 COLLINS NEWARK REMONUMENTATION NOTES. NORTH ON EAST LINE OF 25 VAR 6
  - 2663.76 INTERSECT 1/4 LINE 13.86' WEST OF CORNER. SET 1/4 STONE IN PLACE OF OLD STAKE. CORRECTED VAR 6-18  
CONTINUED NORTH - VAR 6
  - 5330.82 INTERSECTED SECTION LINE 52.8' WEST OF CORNER SET STONE FOR CORNER SECTIONS 24 & 25 BY WITNESS TREES. CORRECTED VAR 7-19.
- 1954 SUNNY MAP #6038 FOUND STONE MONUMENT
- 1986 LEUENBERGER MAP #13184 FOUND STONE.

FOUND CUT LIMESTONE AT THE E 1/4 COR SEC 25 NEWARK TWP. PLACED MAGNETS ON SOUTH & WEST SIDES OF STONE. PLACED CARSONITE POST ON THE NE SIDE OF STONE. STONE IS ON THE E/W FENCE LINE.

C) Was the corner restored through acceptance of (1) an obliterated evidence location, or, (2) a found perpetuated location?  
ACCEPTED FOUND PERPETUATED LOCATION.

D) Describe any material discrepancy between the location of the corner as restored or reestablished and the location of that corner as previously restored or reestablished by distance and direction. Show the discrepancy on the plan view drawing under (a), above. Show the distances between the corner as previously restored or reestablished and (1) the corner as restored or reestablished, and (2) to at least 4 of the witness monuments shown on the drawing in (a), above.

(E) Was the corner reestablished through lost corner proportionate methods? If so, show the method, including the directions and distances to other public land survey corners used as evidence or used for proportioning the corner location.  
NO

I, Donald Barnes, hereby certify that the corner points as identified by the corner code index were, in a field survey on, NOVEMBER 4, 1997, established, re-established, monumented, re-monumented, recovered or restored as expressed below and in conformance with the regulations and rules as required in the current manual of survey instructions of the United States Department of Interior, Bureau of Land Management.

COUNTY SURVEYOR FILING DATA

seal

Date of computer entry \_\_\_\_\_

Date microfilmed \_\_\_\_\_

Number of included sheets \_\_\_\_\_

CORNER CODE

T-25

*Donald Barnes*  
1/14/98

EMBOSS LAND SURVEYOR SEAL

A-E 7.08 REQUIREMENT

(B) Describe any record evidence, monument evidence, occupational evidence, testimonial evidence or any other material evidence you considered, and whether the monument was found or placed.

- 1833 SEP MULLETT NORTH ON EAST SIDE SECTION 25 (NEWARK TWP)  
969.54' BUR OAK 14 IN DIAMETER  
2211' ENTER WET PRAIRIE  
2640 SET QUARTER SECTION POST BUR OAK 6 N17W 1.84, BUR OAK 4 N53E 1.40 (FOR E 1/4 COR SEC 25)  
2706 LEAVE WET PRAIRIE  
5280 SET POST CORNER SECTIONS 24 & 25 BUR OAK 10 S49W .87, BLACK OAK 12 N47W 1.38  
LAND EXCEPT WET PRAIRIE SECOND RATE WHITE, BLACK & BUR OAK
- 1871 COLLINS NEWARK REMONUMENTATION NOTES. NORTH ON EAST LINE OF 25 (NEWARK TWP)  
VAR 6  
2663.76 INTERSECT 1/4 LINE 13.86' WEST OF CORNER. SET 1/4 STONE IN PLACE OF OLD STAKE. CORRECTED VAR 6-18  
CONTINUED NORTH - VAR 6  
5330.82 INTERSECTED SECTION LINE 52.8' WEST OF CORNER SET STONE FOR CORNER SECTIONS 24 & 25 BY WITNESS TREES. CORRECTED VAR 7-19.
- 1954 SUNNY MAP #6038 FOUND STONE MONUMENT  
1986 LEUENBERGER MAP #13184 FOUND STONE.

FOUND CUT LIMESTONE AT THE E 1/4 COR SEC 25 NEWARK TWP. PUT MAGNETS ON THE SOUTH & WEST SIDES OF STONE. SET CARSONITE POST ON THE NE SIDE OF STONE. THE STONE IS ON THE E/W FENCE LINE.

C) Was the corner restored through acceptance of (1) an obliterated evidence location, or, (2) a found perpetuated location?  
YES. ACCEPTED FOUND PERPETUATED LOCATION.

D) Describe any material discrepancy between the location of the corner as restored or reestablished and the location of that corner as previously restored or reestablished by distance and direction. Show the discrepancy on the plan view drawing under (a), above. Show the distances between the corner as previously restored or reestablished and (1) the corner as restored or reestablished, and (2) to at least 4 of the witness monuments shown on the drawing in (a), above.

(E) Was the corner reestablished through lost corner proportionate methods? If so, show the method, including the directions and distances to other public land survey corners used as evidence or used for proportioning the corner location.  
NO

I, Donald Barnes, hereby certify that the corner points as identified by the corner code index were, in a field survey on, NOVEMBER 4, 1997, established, re-established, monumented, re-monumented, recovered or restored as expressed below and in conformance with the regulations and rules as required in the current manual of survey instructions of the United States Department of Interior, Bureau of Land Management.

COUNTY SURVEYOR FILING DATA

Date of computer entry \_\_\_\_\_

Date microfilmed \_\_\_\_\_

Number of included sheets \_\_\_\_\_  
CORNER CODE

seal

1-20/98  
*Donald Barnes*

EMBOSS LAND SURVEYOR SEAL

A-E 7.08 REQUIREMENT

HARRISON SURVEYED THE FOLLOWING ROCK COUNTY TOWNSHIPS IN THE FOLLOWING ORDER:

FIELD NOTE JOGS			
	1833	ON WEST BNDY	PLAT ACTUAL
MARCH 14-17	1833	AVON SOUTH HALF	NO 1COR NO
OCT 28-NOV 4	1833	PORTER	FEW ALL ALL
NOV 5-11	1833	UNION	YES ALL ALL
NOV 27-DEC 1	1833	CENTER	MOST ALL ALL
DEC 1-7	1833	MAGNOLIA	FEW ALL ALL
DEC 14-18	1833	JANESVILLE WEST HALF	NO NO
DEC 20-27	1833	PLYMOUTH	YES NO NO
1834			
JAN 26-FEB 2	1834	AVON NORTH HALF	NO 1COR NO
MARCH 8-13	1834	NEWARK	NO NO NO
MARCH 13-18	1834	SPRING VALLEY	NO ALL ALL
MARCH 16-22	1834	BELOIT WEST HALF	FEW NO FEW
MARCH 23-28	1834	ROCK WEST HALF	NO NO NO
MARCH 31 - APR 4	1834	FULTON WEST HALF	NO NO NO

IN CENTER & PORTER TWP ALL THE CLOSURES OF THE WEST BOUNDARY WERE LARGE AND HARRISON SPECIFICALLY STATES SETTING A POST & RAISING A MOUND FOR MANY OF THE CORNERS. THE PLAT ALLS FOR JOGS AT ALL POINTS ALTHOUGH THE FIELD NOTES DO NOT STATE SO. THE PROBLEM IS THE FIELD NOTES, ORIGINAL PLAT, AND FIELD HISTORY ARE NOT ALWAYS IN HARMONY.

THE FOLLOWING RECORDS SHOW THAT THE ORIGINAL SURVEYOR, HARRISON, PLACED N/S JOGS AT THE SECTION CORNERS BETWEEN BELOIT & NEWARK TOWNSHIPS FROM THE SW COR SECTION 31 BELOIT TOWNSHIP TO THE NW CORNER OF SEC 19. THE ORIGINAL GOVERNMENT PLAT CALLS FOR ALL THE CORNERS BETWEEN NEWARK AND BELOIT TOWNSHIPS TO BE COMMON. THE QUESTION WHY DID HARRISON CHANGE HIS FIELD PROCEDURES FOR THE NW COR SEC 18 AND THE NW COR SEC 7. THE CLOSURES WERE GREATER THAN 10.56' AT THE SW COR SEC 30 WHERE HE ESTABLISHED THE CORNER. ALSO WHY DIDN'T THE ORIGINAL PLAT REFLECT HIS JOGS AS THEY DID IN PORTER & CENTER TOWNSHIPS.

521 E-1 NW COR SEC 7 (COMMON)  
 1834 HARRISON FIELD NOTES WEST BETWEEN SEC 6 & 7  
 5161.2 INT. WEST BOUNDARY 31.02' SOUTH OF POST MARKED SAME FOR COR TO SEC 6 & 7.

541 J-1 NW COR SEC 18 (COMMON)  
 1834 HARRISON FIELD NOTES WEST BET 7 & 18  
 5175.72 INT. WEST BOUNDARY AT NORTH EDGE OF MARSH 61.38' SOUTH OF POST MARKED SAME FOR 7 & 18

554 L-1 W 1/4 COR SEC 18 (JOG)  
 1878 RUGER VOL 2 PG 260 SEE SURVEY SEC 13 LOCKE. CALLS FOR E 1/4 COR SEC 13 NORTH OF THE W 1/4 COR SEC 18. 2657.16 TO NW & SW CORNERS OF SEC 18. VERIFIED MAP JOG IN ORIGINAL COUNTY SURVEYOR'S VOL 2 PG 260 RECORDS.

561 N-1 NW COR SEC 19 (JOG)  
 1834 HARRISON FIELD NOTES WEST BET. SECS 18 & 19 RAND.  
 5197.5 INTERSECTED WEST BOUNDARY 59.4' SOUTH OF POST IN EAST EDGE OF MARSH} SET COR TO SEC 18 & 19 MARKED POST.

1878 RUGER VOL 2 PG 260 SHOWS THE CORNER AS BEING SOUTH OF THE SE COR SEC 13 NEWARK TWP.

574 P-1 W 1/4 COR SEC 19 (JOG)  
 NOTHING INDICATES A JOG.

581 R-1 SW COR SEC 19 (JOG)  
 1834 HARRISON FIELD NOTES WEST BE. SECS 19 & 30 RAND.  
 5208.72 INTERSECTED WEST BOUNDARY 50.16' SOUTH OF POST COR TREES TO 19 & 30 BUR OAK 8 N49E 29' & BUR OAK 9 S70E.

594 T-1 W 1/4 COR SEC 30 (JOG)  
NOT RECORD INDICATING A JOG.

601 V-1 SW COR SEC 30 (JOG)

1834 HARRISON WEST BETWEEN SECTIONS 30 & 31 ON RAND.  
5217.3 INTERSECTED WEST BOUNDARY 10.56' SOUTH OF POST &  
ESTABLISHED COR TO SEC 30 & 31. BEARINGS BURR OAK 30 N15E  
159 & BUR OAK 18 S29E 29

1931 SUNNY VOL 3 PG 189 INCOMPLETE RECORD SEEMS TO INDICATE THAT  
SEC LINE OF SEC 30 & 31 BELOIT TWP JOGS 5.10 TO 16 LINKS.  
DUG BUT FOUND NOTHING SOUTH OF SE COR SEC 25. AT SE COR SEC  
25 FOUND 6X5 CUT STONE MON. OF SEC 25 & 36 NEWARK.

614 X-1 W 1/4 COR SEC 31 (JOG)

1959 BATTERMAN VOL 4 PG 6 SHOWS E 1/4 COR SEC 36 4.49' NORTH OF W  
1/4 COR SEC 31. REFERENCED BOTH.