

# U.S. PUBLIC LAND SURVEY MONUMENT RECORD

For Public Land Survey Corners in:

WI ADMINISTRATIVE CODE A-E 7.08 REQUIREMENT

T.    N., R.    E

### CORNER CODE INDEX

A	1	2	3	4	5	6	7	8	9	10	11	12	13	14	15	16	17	18	19	20	21	22	23	24	25	
B	6																									
C																										
D																										
E																										
F	1	8	9																							
G																										
H																										
I																										
J																										
K	18	11	16	15	14	13																				
L																										
M																										
N																										
O																										
P	19	20	21	22	23	24																				
Q																										
R																										
S																										
T	30	29	28	27	26	25																				
U																										
V																										
W																										
X	31	32	33	34	35	36																				
Y																										
Z																										

NEWARK TWP  
ROCK COUNTY WI

IF AVAILABLE  
ROCK COUNTY COORDINATES PREFERRED

North \_\_\_\_\_ Elev. \_\_\_\_\_

East \_\_\_\_\_

Hor. Datum \_\_\_\_\_ Vert. Datum \_\_\_\_\_

LATITUDE \_\_\_\_\_ ELLIPS. HT. \_\_\_\_\_

LONGITUDE \_\_\_\_\_

GPS (X) \_\_\_\_\_ TRAVERSE (X) \_\_\_\_\_

BASED ON THE FOLLOWING CONTROL:

PLACE MONUMENT SYMBOL  AT PROPER LOCATION ON ABOVE INDEX

CORNER MONUMENT       WITNESS MONUMENT

BEARINGS ARE BASED ON: (a) \_\_\_\_\_

FIELD BOOK \_\_\_\_\_ PAGE # \_\_\_\_\_

SHEET   1   OF   02  

SHOW A PLAN VIEW DRAWING DEPICTING THE CORNER MONUMENT AND SURROUNDING PHYSICAL FEATURES, INCLUDING THE EXCAVATION AREA AND DEPTH.

PLANNING & ZONING COMMITTEE ADOPTED THE ABOVE FORM ON 12/2/1982

CORNER CODE   P-25

NE580

(B) Describe any record evidence, monument evidence, occupational evidence, testimonial evidence or any other material evidence you considered, and whether the monument was found or placed.

- 1833 SEP MULLETT NORTH ON EAST SIDE SECTION 24  
990' ENTER MARSH  
1947 STREAM 5.28' CROSSES SE  
1980 LEAVE MARSH  
2640 SET QUARTER SECTION POST BUR OAK 12 S7W 69.3' & BUR OAK  
8 N15W 24.42'. (E 1/4 COR SEC 24).  
2805 ENTER WET PRAIRIE  
5280 SET POST CORNER SECTIONS 13 & 24 IN WET PRAIRIE AND MADE  
MOUND, LAND EXCEPT MARSH ROLLING SECOND RATE., BLACK, WHITE,  
AND BUR OAK
- 1863 LOCKE VOL 1 PG 185 FD BT OLD STAKE 2667.72 TO CENTER OF SEC 24.
- 1871 COLLINS REMONUMENTATION NOTES. NORTH ON EAST LINE OF 24  
VARIATION 6.  
1320 CHANGED COURSE VARIATION 5-30.  
1980 SPRING BOOK  
2651.88 INTERSECTED 1/4 LINE 6.6' WEST OF CORNER. SET 1/4 STONE  
IN PLACE OF OLD STAKE AGREEING WITH WITNESS TREES.  
CORRECTED VARIATION 5-54.  
CONTINUED NORTH. VARIATION 4-35  
5305.08 SET STONE FOR CORNER. SECTIONS 13 & 24 IN CENTER OF  
HIGHWAY AND IN LINE WITH FENCES NORTH & SOUTH.  
OCT 10 1871
- 1975 SPRAGUE MAP #427 N/S 195,688.189;E/W 2,234,621.43 NO-13-37W  
2663.25 TO NW COR SEC 19,S0-19-55E 2654.61 TO SW COR SEC 19,& S88-  
58-41E 5166.22 TO E 1/4 COR SEC 19.

FOUND CUT LIMESTONE 0.6' ABOVE GROUND ON E/W FENCE LINE. PLACED  
MAGNETS ON NORTH & EAST SIDE & CARSONITE POST ON SOUTH SIDES OF STONE.  
DUE TO THE JOG AT THE NW AND SW CORNERS, THERE WILL BE A JOG WITH THE W  
1/4 COR SEC 19.

C) Was the corner restored through acceptance of (1) an obliterated  
evidence location, or, (2) a found perpetuated location?

ACCEPTED FOUND PERPETUATED LOCATION.

D) Describe any material discrepancy between the location of the  
corner as restored or reestablished and the location of that corner as  
previously restored or reestablished by distance and direction. Show  
the discrepancy on the plan view drawing under (a), above. Show the  
distances between the corner as previously restored or reestablished  
and (1) the corner as restored or reestablished, and (2) to at least 4  
of the witness monuments shown on the drawing in (a), above.

NONE

(E) Was the corner reestablished through lost corner proportionate  
methods? If so, show the method, including the directions and  
distances to other public land survey corners used as evidence or used  
for proportioning the corner location.

I, Donald Barnes, hereby certify that the corner points as identified  
by the corner code index were, in a field survey on, NOV 21, 1997,  
established, re-established, monumented, re-monumented, recovered or  
restored as expressed below and in conformance with the regulations and  
rules as required in the current manual of survey instructions of the  
United States Department of Interior, Bureau of Land Management.

COUNTY SURVEYOR FILING DATA

seal

Date of computer entry \_\_\_\_\_

Date microfilmed \_\_\_\_\_

Number of included sheets \_\_\_\_\_

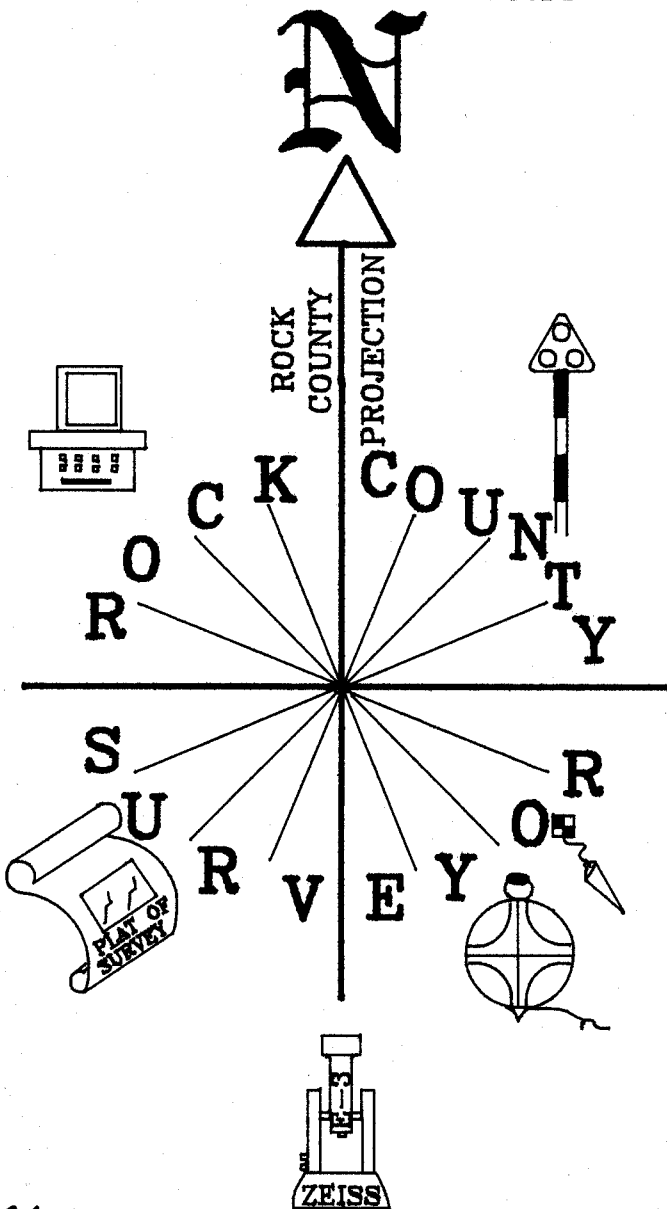
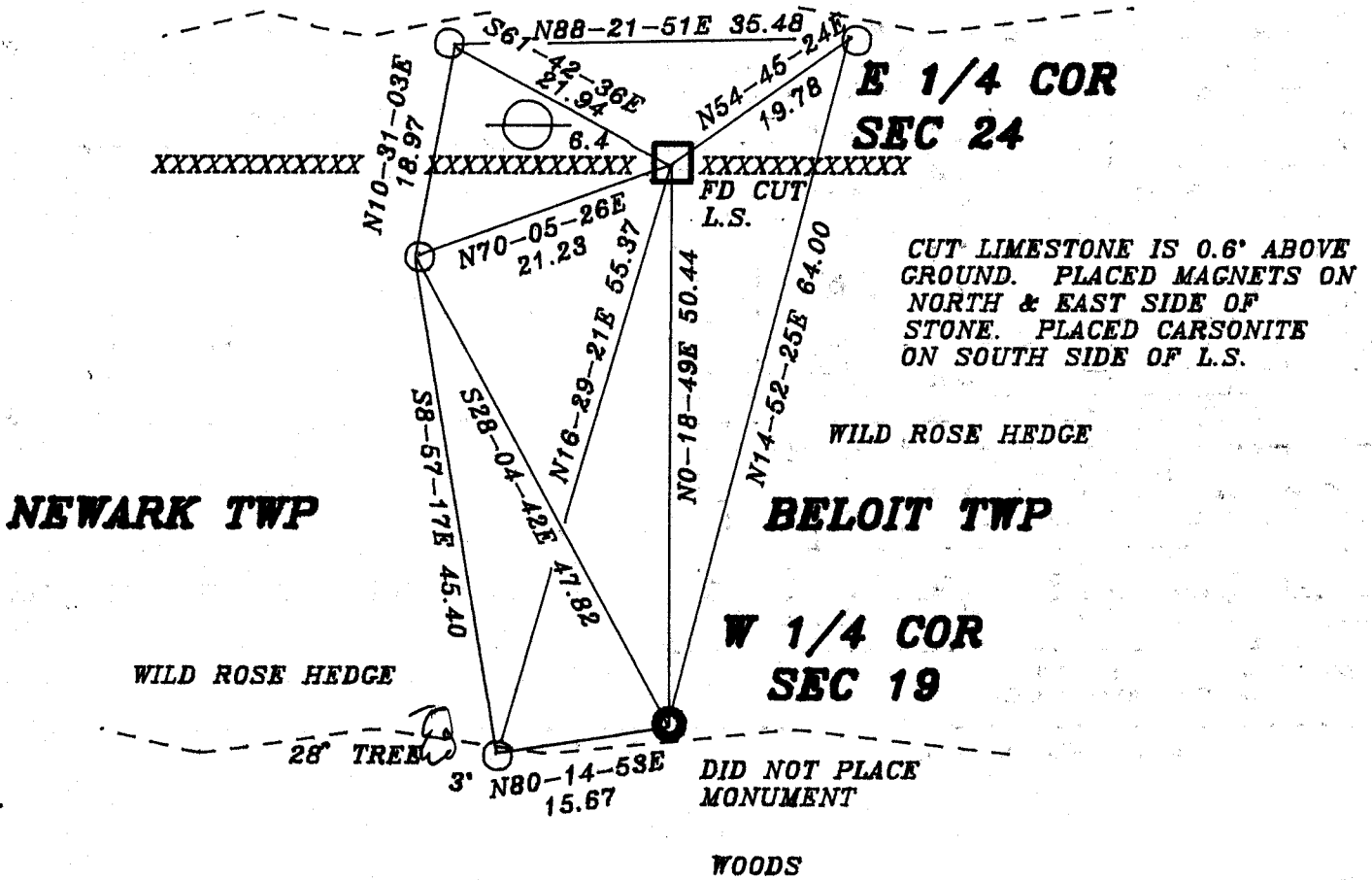
CORNER CODE

EMBOSS LAND SURVEYOR SEAL

A-E 7.08 REQUIREMENT

P25

FARM FIELD



Donald Barnes  
 EMBOSSED SEAL  
 2/1/98