

U.S. PUBLIC LAND SURVEY MONUMENT RECORD

For Public Land Survey Corners in:

WI ADMINISTRATIVE CODE A-E 7.08 REQUIREMENT

T. 1 N., R. 11 E

CORNER CODE INDEX

A	1	2	3	4	5	6	7	8	9	10	11	12	13	14	15	16	17	18	19	20	21	22	23	24	25
B	6																								
C		5																							
D			4																						
E				3																					
F	1																								
G		8																							
H			9																						
I				10																					
J					11																				
K						12																			
L	18						11																		
M		17						10																	
N			16						9																
O				15						8															
P					14						7														
Q						13						6													
R	19						20																		
S		20						21																	
T			21						22																
U				22						23															
V					23						24														
W						24						25													
X	30						29						28												
Y		30						28						27											
Z			31						26						26										
				32						25						25									
					33						24						24								
						34						23						23							
							35						22						22						
								36						21						21					
									37						20						20				
										38						19						19			

NEWARK TWP

ROCK COUNTY WI

IF AVAILABLE
ROCK COUNTY COORDINATES PREFERRED

North _____ Elev. _____

East _____

Hor. Datum _____ Vert. Datum _____

LATITUDE _____ ELLIPS. HT. _____

LONGITUDE _____

GPS (X) _____ TRAVERSE (X) _____

BASED ON THE FOLLOWING CONTROL:

PLACE MONUMENT SYMBOL AT PROPER LOCATION ON ABOVE INDEX

CORNER MONUMENT

WITNESS MONUMENT

(a)

BEARINGS ARE BASED ON: _____

FIELD BOOK _____ PAGE # _____

SHEET 1 OF 5

SHOW A PLAN VIEW DRAWING DEPICTING THE CORNER MONUMENT AND SURROUNDING PHYSICAL FEATURES, INCLUDING THE EXCAVATION AREA AND DEPTH.

PLANNING & ZONING COMMITTEE ADOPTED THE ABOVE FORM ON 12/2/1982

CORNER CODE R-25

BE4026

(B) Describe any record evidence, monument evidence, occupational evidence, testimonial evidence or any other material evidence you considered, and whether the monument was found or placed.

- 1833 SEP MULLETT NORTH ON EAST SIDE SECTIONS 25
969.54 BUR OAK 14IN. DIAMETER
2211' ENTER WET PRAIRIE
2640 SET QUARTER SECTION POST. BUR OAK 6 N17W 1.84; BUR OAK N53E 1.40
2706 LEAVE WET PRAIRIE
5280 SET POST & CORNER SECTIONS 24 & 25 BUR OAK 10 S49W 57.42 & BLACK OAK 12 N47W 91.08'. LAND EXCEPT WET PRAIRIE, SECOND RATE WHITE, BLACK, & BUR OAK.
- 1834 HARRISON WEST BETWEEN SEC 19 & 30 RAND.
2640 TEMP 1/4 SEC COR.
3966.6' BROOK 5.28' CROSSES S.
5208.72' INTERSECTED WEST BOUNDARY 50.16' SOUTH OF POST COR TREES TO 19 & 30 BUR OAK 8 N49E 29 & BUR OAK 9 S70E ? LAND LEVEL 2ND RATE, TIMBER BURR OAK, RED OAK, & HICKORY.
EAST COR. EAST BETWEEN 19 & 30
2568.72' QUARTER SEC COR. RED OAK 20 N44E 31; RED OAK 12 N78W 350, MARKED RED OAK 20 & RED OAK 12
5208.72 SEC COR.
- 1871 COLLINS - NEWARK REMONUMENTATION NORTH ON EAST LINE OF 25 VAR 6
2663.76 INTERSECTED 1/4 LINE 13.86' WEST OF CORNER. SET 1/4 STONE IN PLACE OF OLD STAKE. CORRECTED VAR 6-18
CONTINUED NORTH - VAR 6
5330.82 INTERSECTED SECTION LINE 52.8' WEST OF CORNER SET STONE FOR CORNER SECTIONS 25 & 25 BY WITNESS TREES. CORRECTED VAR 7-09
NORTH ON EAST LINE OF 24 VAR 6.
1320 CHANGED COURSE VAR 5-30.
1980 SPRING BROOK
2651.88 INTERSECTED 1/4 LINE 6.6' WEST OF CORNER. SET 1/4 STONE IN PLACE OF OLD STAKE AGREEING WITH WITNESS TREES. CORRECTED VARIATION 5-54
CONTINUED NORTH- VAR 4-35'
5305.08 SET STONE FOR CORNER. SECTIONS 13 & 24 IN CENTER OF HIGHWAY AND IN LINE WITH FENCES NORTH & SOUTH. OCT 10TH 1871.
EAST BETWEEN 13 & 24. VAR 5-55
2651.88 SET 1/4 STONE IN LINE WITH FENCE NORTH. CONTINUED EAST SAME VARIATION
5303.10' SECTION CORNER.
- 1889 БЕЛОИТ ТWP RD BK 3 PG 127-134 BEGINNING AT THE NE COR OF SEC 30 AND RUNNING THENCE WEST ON THE SEC. LINE BETWEEN SEC 30 & 19 TO THE WEST LINE OF SAID TOWN OF БЕЛОИТ. THE SEC LINE BEING THE CENTER OF SAID HWY, LAID OUT TO THE WIDTH OF 4 RODS.
- 1935 SUNNY VOL 3 PG 162 & 266 FOUND CUT STONE 6X6X36 STICKING ABOVE THE SURFACE OF THE ROAD, REST SAME ABOUT 6" BELOW ROAD SURFACE, CENTER OF ROAD.

FD CUT LIMESTONE IN MON BOX AT SE COR SEC 24 NEWARK TWP.
DID NOT FIND, SEARCH, OR PLACE MONUMENT AT NW COR SEC 30.

C) Was the corner restored through acceptance of (1) an obliterated evidence location, or, (2) a found perpetuated location?
ACCEPTED FOUND CUT LIMESTONE.

D) Describe any material discrepancy between the location of the corner as restored or reestablished and the location of that corner as previously restored or reestablished by distance and direction. Show the discrepancy on the plan view drawing under (a), above. Show the distances between the corner as previously restored or reestablished and (1) the corner as restored or reestablished, and (2) to at least 4 of the witness monuments shown on the drawing in (a), above.

(E) Was the corner reestablished through lost corner proportionate methods? If so, show the method, including the directions and distances to other public land survey corners used as evidence or used for proportioning the corner location.

YES

I, Donald Barnes, hereby certify that the corner points as identified by the corner code index were, in a field survey on, established, re-established, monumented, re-monumented, recovered or restored as expressed below and in conformance with the regulations and rules as required in the current manual of survey instructions of the United States Department of Interior, Bureau of Land Management.

COUNTY SURVEYOR FILING DATA

Date of computer entry _____

Date microfilmed _____

Number of included sheets _____
CORNER CODE

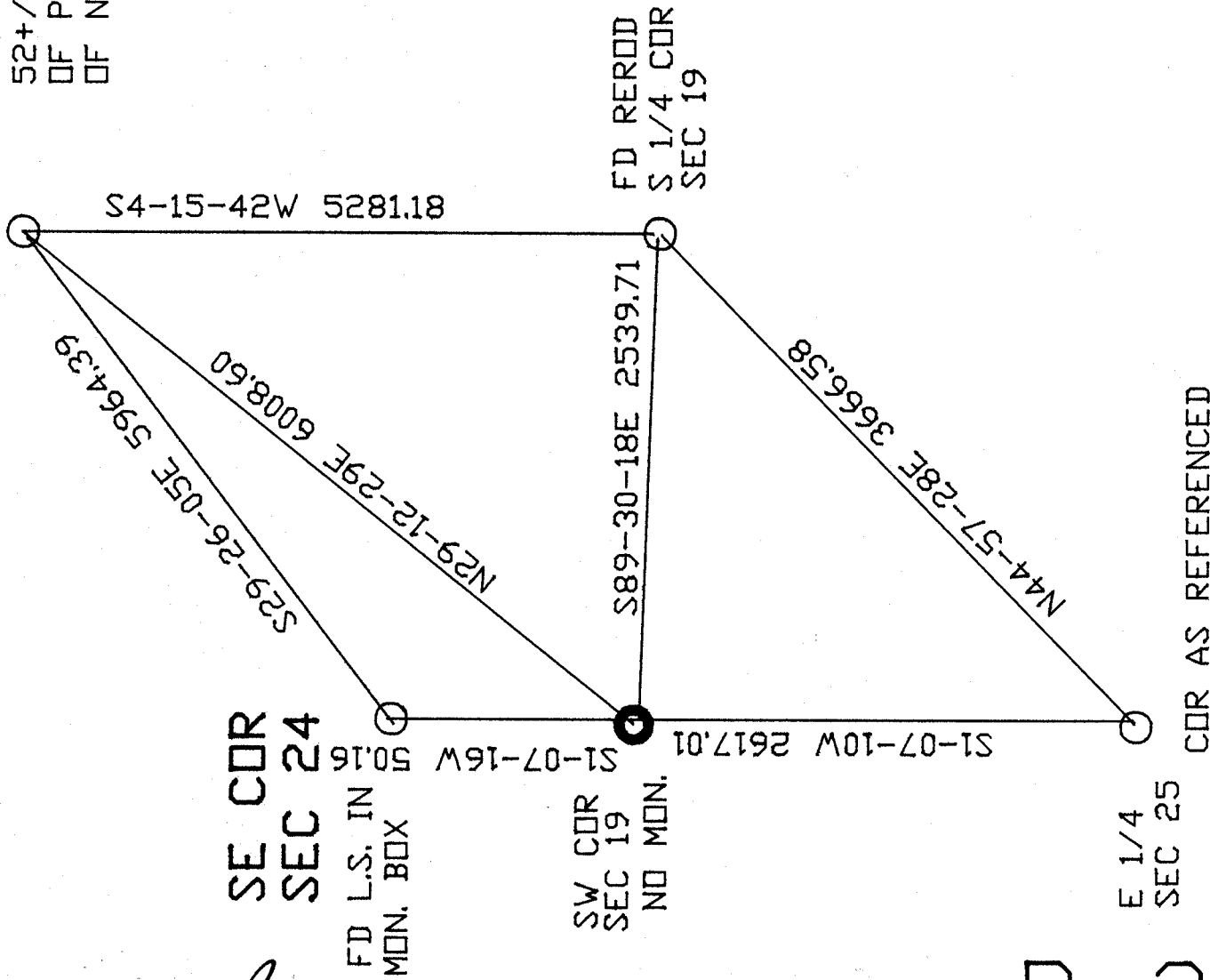
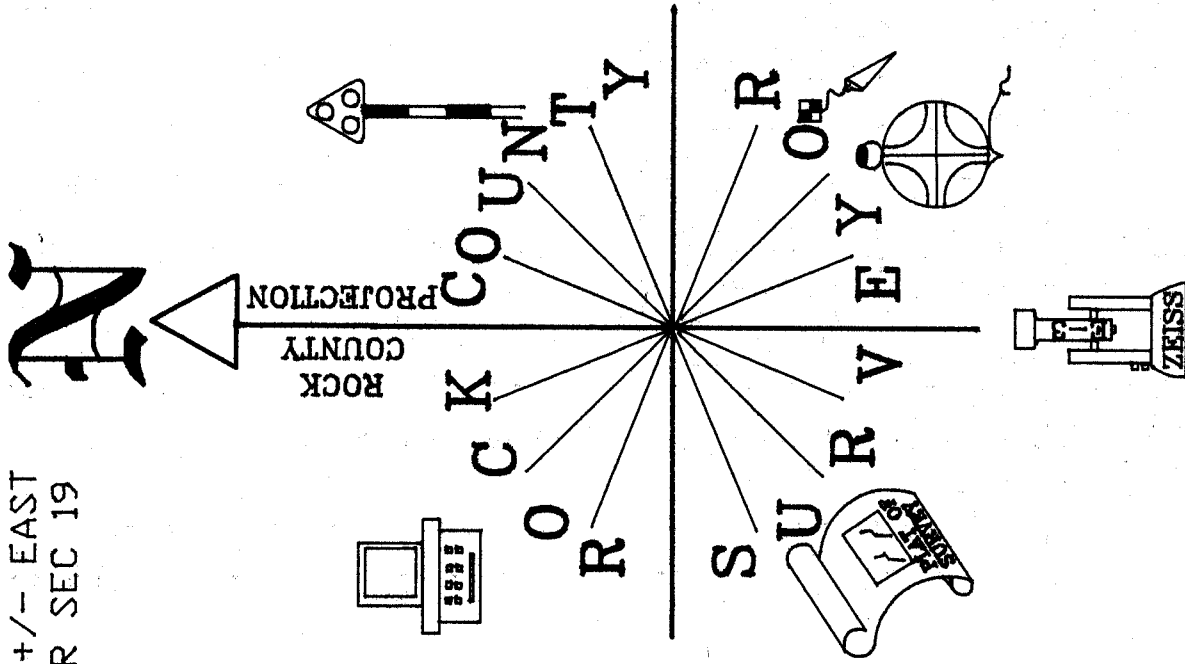
seal
Donald Barnes
OCT 20 11 1998

EMBOSS LAND SURVEYOR SEAL

A-E 7.08 REQUIREMENT

R25

STA #52 FD. T-BAR
 52+/- SOUTH OF CENTER
 OF PVMT, 405+/- EAST
 OF N 1/4 COR SEC 19



COR AS REFERENCED

Dwight Barnes
 Oct 20, 1998

R-25

HARRISON SURVEYED THE FOLLOWING ROCK COUNTY TOWNSHIPS IN THE FOLLOWING ORDER:

		FIELD NOTE JOGS		PLAT	ACTUAL
		1833	ON WEST BNDY		
MARCH 14-17	1833	AVON SOUTH HALF	NO	1COR	NO
OCT 28-NOV 4	1833	PORTER	FEW	ALL	ALL
NOV 5-11	1833	UNION	YES	ALL	ALL
NOV 27-DEC 1	1833	CENTER	MOST	ALL	ALL
DEC 1-7	1833	MAGNOLIA	FEW	ALL	ALL
DEC 14-18	1833	JANESVILLE WEST HALF	NO	NO	NO
DEC 20-27	1833	PLYMOUTH	YES	NO	NO
		1834			
JAN 26-FEB 2	1834	AVON NORTH HALF	NO	1COR	NO
MARCH 8-13	1834	NEWARK	NO	NO	NO
MARCH 13-18	1834	SPRING VALLEY	NO	ALL	ALL
MARCH 16-22	1834	BELOIT WEST HALF	FEW	NO	FEW
MARCH 23-28	1834	ROCK WEST HALF	NO	NO	NO
MARCH 31 - APR 4	1834	FULTON WEST HALF	NO	NO	NO

IN CENTER & PORTER TWP ALL THE CLOSURES OF THE WEST BOUNDARY WERE LARGE AND HARRISON SPECIFICALLY STATES SETTING A POST & RAISING A MOUND FOR MANY OF THE CORNERS. THE PLAT ALLS FOR JOGS AT ALL POINTS ALTHOUGH THE FIELD NOTES DO NOT STATE SO. THE PROBLEM IS THE FIELD NOTES, ORIGINAL PLAT, AND FIELD HISTORY ARE NOT ALWAYS IN HARMONY.

THE FOLLOWING RECORDS SHOW THAT THE ORIGINAL SURVEYOR, HARRISON, PLACED N/S JOGS AT THE SECTION CORNERS BETWEEN BELOIT & NEWARK TOWNSHIPS FROM THE SW COR SECTION 31 BELOIT TOWNSHIP TO THE NW CORNER OF SEC 19. THE ORIGINAL GOVERNMENT PLAT CALLS FOR ALL THE CORNERS BETWEEN NEWARK AND BELOIT TOWNSHIPS TO BE COMMON. THE QUESTION WHY DID HARRISON CHANGE HIS FIELD PROCEDURES FOR THE NW COR SEC 18 AND THE NW COR SEC 7. THE CLOSURES WERE GREATER THAN 10.56' AT THE SW COR SEC 30 WHERE HE ESTABLISHED THE CORNER. ALSO WHY DIDN'T THE ORIGINAL PLAT REFLECT HIS JOGS AS THEY DID IN PORTER & CENTER TOWNSHIPS.

521 E-1 NW COR SEC 7 (COMMON)
 1834 HARRISON FIELD NOTES WEST BETWEEN SEC 6 & 7
 5161.2 INT. WEST BOUNDARY 31.02' SOUTH OF POST MARKED SAME FOR COR TO SEC 6 & 7.

541 J-1 NW COR SEC 18 (COMMON)
 1834 HARRISON FIELD NOTES WEST BET 7 & 18
 5175.72 INT. WEST BOUNDARY AT NORTH EDGE OF MARSH 61.38' SOUTH OF POST MARKED SAME FOR 7 & 18

554 L-1 W 1/4 COR SEC 18 (JOG)
 1878 RUGER VOL 2 PG 260 SEE SURVEY SEC 13 LOCKE. CALLS FOR E 1/4 COR SEC 13 NORTH OF THE W 1/4 COR SEC 18. 2657.16 TO NW & SW CORNERS OF SEC 18. VERIFIED MAP JOG IN ORIGINAL COUNTY SURVEYOR'S VOL 2 PG 260 RECORDS.

561 N-1 NW COR SEC 19 (JOG)
 1834 HARRISON FIELD NOTES WEST BET. SECS 18 & 19 RAND.
 5197.5 INTERSECTED WEST BOUNDARY 59.4' SOUTH OF POST IN EAST EDGE OF MARSH} SET COR TO SEC 18 & 19 MARKED POST.
 1878 RUGER VOL 2 PG 260 SHOWS THE CORNER AS BEING SOUTH OF THE SE COR SEC 13 NEWARK TWP.

574 P-1 W 1/4 COR SEC 19 (JOG)
 NOTHING INDICATES A JOG.

581 R-1 SW COR SEC 19 (JOG)
 1834 HARRISON FIELD NOTES WEST BE. SECS 19 & 30 RAND.
 5208.72 INTERSECTED WEST BOUNDARY 50.16' SOUTH OF POST COR TREES TO 19 & 30 BUR OAK 8 N49E 29' & BUR OAK 9 S70E.

594 T-1 W 1/4 COR SEC 30 (JOG)
NOT RECORD INDICATING A JOG.

601 V-1 SW COR SEC 30 (JOG)

1834 HARRISON WEST BETWEEN SECTIONS 30 & 31 ON RAND.
5217.3 INTERSECTED WEST BOUNDARY 10.56' SOUTH OF POST &
ESTABLISHED COR TO SEC 30 & 31. BEARINGS BURR OAK 30 N15E
159 & BUR OAK 18 S29E 29

1931 SUNNY VOL 3 PG 189 INCOMPLETE RECORD SEEMS TO INDICATE THAT
SEC LINE OF SEC 30 & 31 BELOIT TWP JOGS 5.10 TO 16 LINKS.
DUG BUT FOUND NOTHING SOUTH OF SE COR SEC 25. AT SE COR SEC
25 FOUND 6X5 CUT STONE MON. OF SEC 25 & 36 NEWARK.

614 X-1 W 1/4 COR SEC 31 (JOG)

1959 BATTERMAN VOL 4 PG 6 SHOWS E 1/4 COR SEC 36 4.49' NORTH OF W
1/4 COR SEC 31. REFERENCED BOTH.