

U.S. PUBLIC LAND SURVEY MONUMENT RECORD

For Public Land Survey Corners in:

WI ADMINISTRATIVE CODE A-E 7.08 REQUIREMENT

T. 1 N., R. 11 E

CORNER CODE INDEX

NEWARK TWP

ROCK COUNTY WI

IF AVAILABLE
ROCK COUNTY COORDINATES PREFERRED

A	1	2	3	4	5	6	7	8	9	10	11	12	13	14	15	16	17	18	19	20	21	22	23	24	25
B																									
C	6																								
D		5																							
E																									
F	1																								
G		8																							
H																									
I																									
J																									
K	18																								
L		17																							
M																									
N																									
O																									
P	19																								
Q		20																							
R																									
S																									
T	30																								
U		29																							
V																									
W																									
X																									
Y	31																								
Z		32																							

PLACE MONUMENT SYMBOL AT PROPER LOCATION ON ABOVE INDEX

North _____ Elev. _____

East _____

Hor. Datum _____ Vert. Datum _____

LATITUDE _____ ELLIPS. HT. _____

LONGITUDE _____

GPS (X) _____ TRAVERSE (X) _____

BASED ON THE FOLLOWING CONTROL:

CORNER MONUMENT

WITNESS MONUMENT

(a)

BEARINGS ARE BASED ON:

OBSERVATION SHEET 937

FIELD BOOK _____ PAGE # _____

SHEET 1 OF 3

SHOW A PLAN VIEW DRAWING DEPICTING THE CORNER MONUMENT AND SURROUNDING PHYSICAL FEATURES, INCLUDING THE EXCAVATION AREA AND DEPTH.

PLANNING & ZONING COMMITTEE ADOPTED THE ABOVE FORM ON 12/2/1982

CORNER CODE 2-25

NE633

(B) Describe any record evidence, monument evidence, occupational evidence, testimonial evidence or any other material evidence you considered, and whether the monument was found or placed.

1833 LYON BASE LINE (N.W. TERR)

EAST ALONG THE SOUTH SIDE OF SEC 36 VAR 6-50E.

2640 PASSING THROUGH A DEEP PLASH AND SOME SCATTERING BUR OAK TREES, SET POST FOR 1/4 SECTION CORNER. BUR OAK 16 S68E 139.92', NO OTHER BEARING.

5280 SET A POST IN PLASHY GROUND, AS BEFORE, FOR CORNER TO SEC 36 OF R11 & SEC 31 OF R12E OF THE 4TH PRINCIPAL MERIDIAN BUR OAK 21 WEST 2049.96' CHS, NO OTHER BEARING. THE ABOVE BEARING TREE STANDS ALL ALONE. LAND, FLAT, WET, 3RD RATE PRAIRIE.

EAST ALONG THE SOUTH SIDE OF SEC 31 T1N R12E VAR 6-00 E

2059.2 TO A BRISK RUNNING STREAM 25.08' WIDE- GENERAL COURSE S.W.

2640 SET POST FOR 1/4 SECTION CORNER NEAR THE EAST SIDE OF WET, PLASHY PRAIRIE BLACK OAK 17 N83E 248.16' NO OTHER BEARING TREE

4653 ON LAND WELL TIMBERED WITH BUR AND BLACK OAK

5280 SET POST ON THE BORDER OF A PRAIRIE FOR CORNER TO SECTIONS 31 & 32 BUR OAK 12 N12 1/2 E 82.5'; BUR OAK 11 S22E 99' LAND MOSTLY PLASHY 3 RATE PRAIRIE SOME TIMBER ON LAST HALF MILE

1833 MULLETT ORIGINAL SURVEYOR

NORTH ON EAST SIDE SECTION 36.

297 LEAVE MARSH

1217.04 BLACK OAK 12 IN DIAMETER

1650' ENTER MARSH.

2640 SET QUARTER SECTION POST BUR OAK 10 S34W 185.46', NO OTHER

4290 LEAVE MARSH

5280 SET POST CORNER SECTIONS 25 & 36, BUR OAK 13 S26 1/2W 67.32', BUR OAK 20 N27W 52.8', LAND EXCEPT MARSH ROLLING SECOND RATE BUR OAK VAR 7-00'

1834 HARRISON (LYON'S BROTHER LAW) MAP SHOWS THE RANDOM STATE LINE THAT LYON PROBABLY SURVEYED BEING SOUTH BETWEEN THE NW & W 1/4 CORNERS OF SEC 31.

1852 McVEAN VOL 1 PG 12 5273.4 TO SW COR SEC 36.

1871 COLLIN'S REMONUMENTATION OF NEWARK- SET STONE FOR S.E. COR SEC 36 IN PLACE OF OLD STAKE.

NORTH ON EAST LINE OF SEC 36 VAR 6-0

2662.44 INTERSECTED 1/4 LINE 7.92' EAST OF CORNER. SET 1/4 STONE IN PLACE OF LARGE STONE IN CENTER OF HIGHWAY WITH STUMPS OF WITNESS TREES CORRECTED VAR 5-49'

CONTINUED NORTH VAR 6

5326.2 SET STONE FOR CORNER SECTIONS 25 & 36 BY STUMPS OF WITNESS TREES.

WEST ON SOUTH LINE SEC 36 VAR 6-30

2646.6 INTERSECTED 1/4 LINE 11.88' SOUTH OF CORNER SET 1/4 STONE IN PLACE OF OLD STAKE AGREEING WITH STUMPS OF WITNESS TREES. CORRECTED VAR 6-46

CONTINUED WEST VAR 6-30

5294.52 INTERSECTED SECTION LINE 18.48' SOUTH OF CORNER SET STONE FOR CORNER OF SECTIONS 35 & 36 IN PLACE OF OLD STAKE. CORRECTED VAR 6-55.

*Donald Barnes
7-10-01*

NE633

- 1959 BATTERMAN VOL 4 PG 6 2660.93 TO E 1/4 COR SEC 36.
1975 SPRAGUE MAP #6044 COORDINATES OF N/S 182,382.93;E/W 2,234,700.66,
2645.69 TO S 1/4 COR SEC 36, 2660.30 TO E 1/4 COR SEC 36
1998 BARNES BELOIT REMONUMENTATION PROJECT. FOUND CAST IRON
MONUMENT LEANING. FOUND LONG CUT LIME STONE LAYING
HORIZONTALLY NEXT TO C.I. STRAIGHTENED C.I. AND PLACED
CARSONITE POST ON NORTH SIDE OF C.I. N0-00-54W 2660.49 TO E 1/4
COR SEC 36.

USED 1988 OBSERVATIONS.

C) Was the corner restored through acceptance of (1) an obliterated evidence location, or, (2) a found perpetuated location?

ACCEPTED FOUND PERPETUATED LOCATION.

D) Describe any material discrepancy between the location of the corner as restored or reestablished and the location of that corner as previously restored or reestablished by distance and direction. Show the discrepancy on the plan view drawing under (a), above. Show the distances between the corner as previously restored or reestablished and (1) the corner as restored or reestablished, and (2) to at least 4 of the witness monuments shown on the drawing in (a), above.

NONE

(E) Was the corner reestablished through lost corner proportionate methods? If so, show the method, including the directions and distances to other public land survey corners used as evidence or used for proportioning the corner location.

NO

I, Donald Barnes, hereby certify that the corner location as identified by the corner code index was determined by me under my direction and control and that this U.S. Public Land Survey Monument Record is correct and complete to the best of my knowledge and belief.

Seal

Donald Barnes
Emboss

7-10-01

SHEET 2 OF 3

CORNER CODE **Z-25**

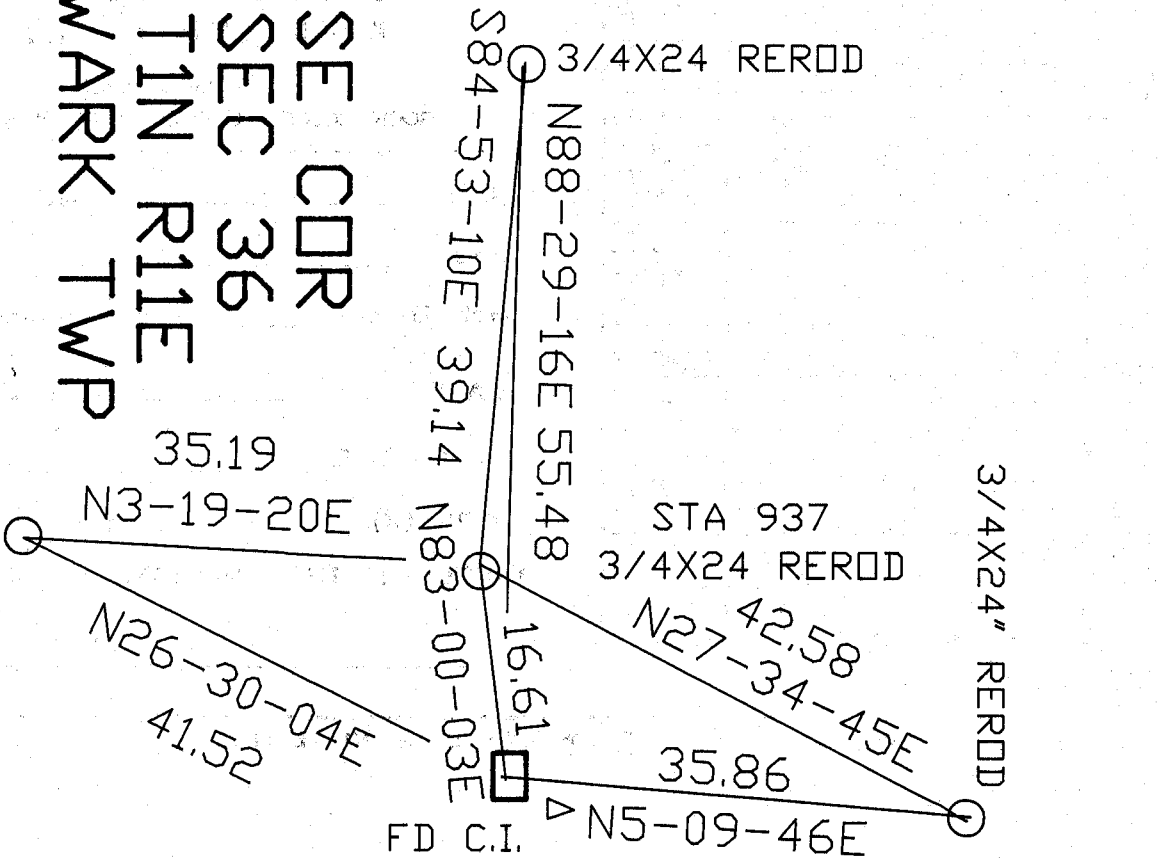
A-E 7.08 REQUIREMENT

Z-25

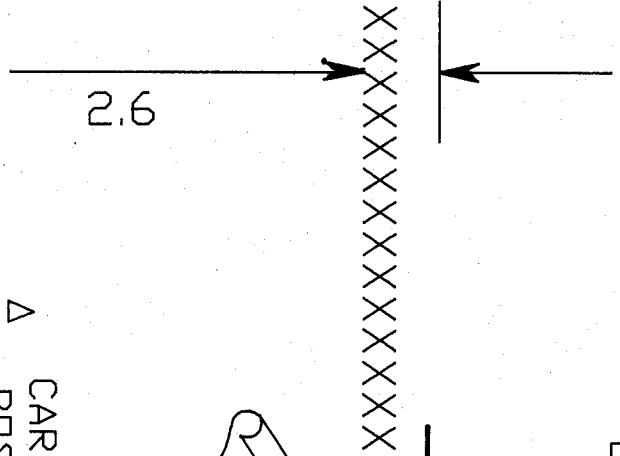
NEWARK TWP

SE CDR
SEC 36
TIN R11E

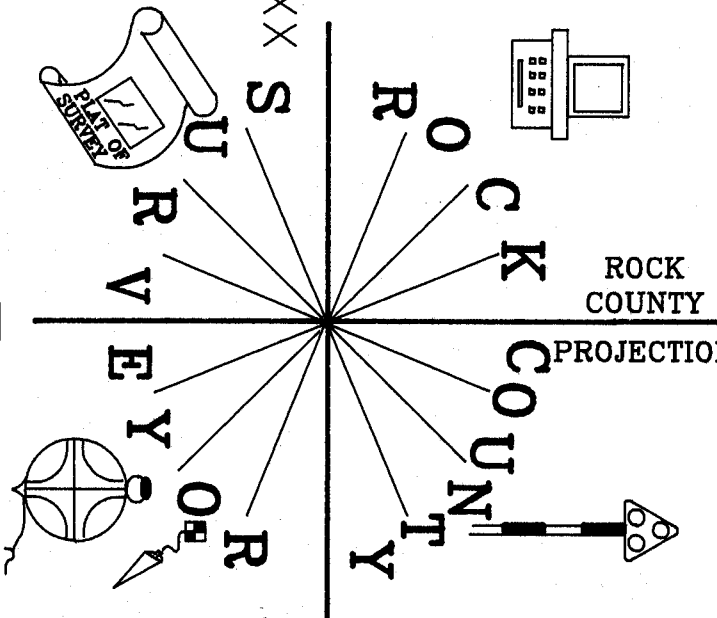
3/4X24 REROD WITH
MAGNET 18" DEEP



XXXXXXXXXXXXXXXXXXXXXXXXXXXX



△ CARSONITE
POST



NOT TO SCALE
OBSERVATION SHEET #937

Ronald Barnes
7-10-01

3 OF 3

Z-25