

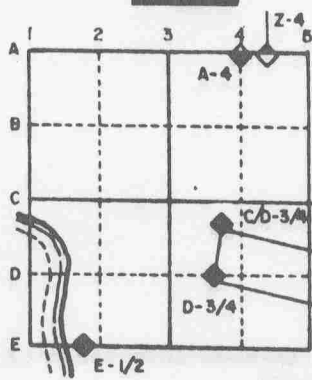
# U.S. PUBLIC LAND SURVEY MONUMENT RECORD

For Public Land Survey Corners in the  
T. 1 N., R. 12 E.

## CORNER CODE INDEX

	1	2	3	4	5	6	7	8	9	10	11	12	13	14	15	16	17	18	19	20	21	22	23	24	25
A																									
B																									
C	6																								
D		5																							
E			4																						
F				3																					
G					2																				
H																									
I																									
J	7																								
K		8																							
L			9																						
M				10																					
N					11																				
O						12																			
P							13																		
Q								14																	
R									15																
S										16															
T											17														
U												18													
V													19												
W														20											
X															21										
Y																22									
Z																	23								
																		24							
																			25						
																				26					
																					27				
																						28			
																							29		
																								30	
																									31
																									32
																									33
																									34
																									35
																									36

### EXAMPLE



BELOIT TWP  
ROCK COUNTY WI

IF AVAILABLE  
STATE PLANE COORDINATES

North (Y) 187,626.65 Elev. (Z) \_\_\_\_\_  
East (X) 2,263,793.63 Zone \_\_\_\_\_  
Hor. Datum \_\_\_\_\_ Vert. Datum \_\_\_\_\_

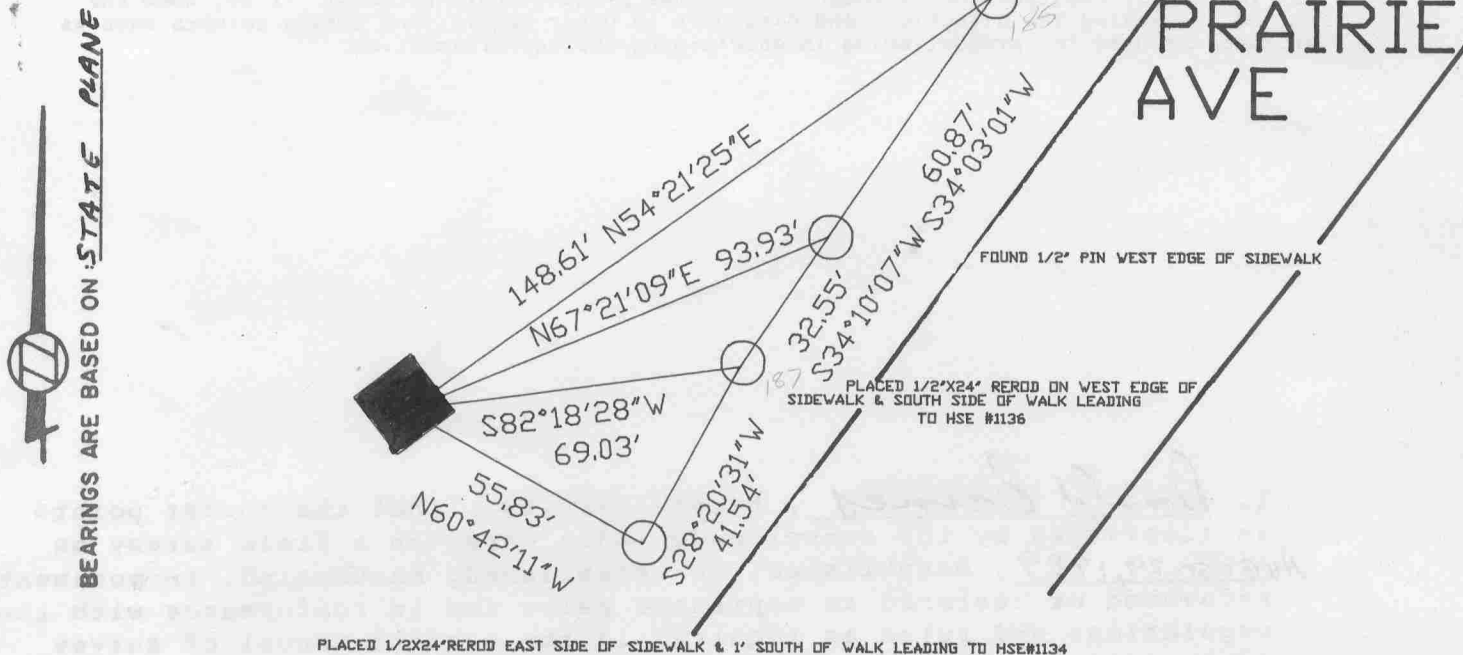
PLACE MONUMENT SYMBOL (◆) AT PROPER  
LOCATION ON ABOVE INDEX

COUNTY 206,318.56  
493,587.68

(a) ◆ CORNER MONUMENT ○ WITNESS MONUMENT

NOTHING PLACED. LOCATION IS IN  
HOUSE # 1134

PLACED 1/2X24 REROD WEST EDGE OF SIDEWALK & +15' NORTH OF NORTH FACE OF HSE #1144



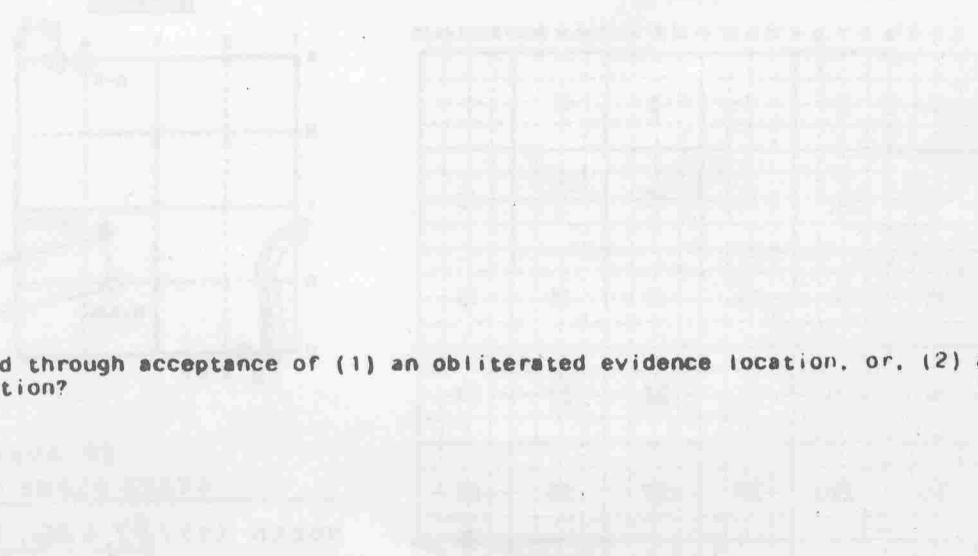
MICROFILMED

FIELD BOOK 1 PAGE # 76

SHOW A PLAN VIEW DRAWING DEPICTING THE CORNER MONUMENT AND SURROUNDING PHYSICAL FEATURES, INCLUDING THE EXCAVATION AREA AND DEPTH. THE CORNER MONUMENT SHALL HAVE THE FOLLOWING CHARACTERISTICS: 1) HAVE AT LEAST TWO PREDETERMINED BREAK-OFF POINTS. 2) IF BROKEN, LEAVE A PERMANENTLY MAGNETIZED REMNANT AT THE ORIGINAL POINT. 3) MUST BE EXTENDABLE. 4) THE CAP IS INSCRIBED: ROCK COUNTY SURVEY MONUMENT - PENALTY FOR DISTURBING MARKER. 5) OR AN EXISTING CUT LIMESTONE. AN IRON PIPE 1 1/2" x 4'0" (MINIMUM) MAY BE USED IN AREAS WHERE GROUND WATER IS WITHIN ONE FOOT OF THE SURFACE. IF THE CORNER IS OCCUPIED BY AN IMPROVEMENT (MANHOLE, BURIED CABLE, ETC.) ANY DURABLE, DISTINCT MONUMENT MAY BE USED. CORNERS SHALL BE REFERENCED WITH AT LEAST 4 DURABLE WITNESS MONUMENTS. WITNESS MONUMENTS SHALL BE MADE OF CONCRETE, NATURAL STONE, IRON OR OTHER EQUALLY DURABLE MATERIAL, EXCEPT WOOD. DESCRIBE THE CORNER AND THE WITNESS MONUMENTS.

CORNER CODE:  
V 23

(b.) Describe any record evidence, monument evidence, occupational evidence, testimonial evidence or any other material evidence you considered, and whether the monument was found or placed.

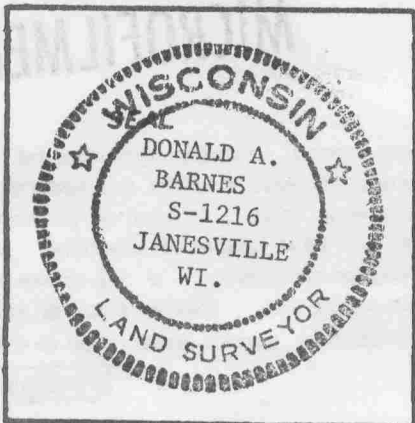
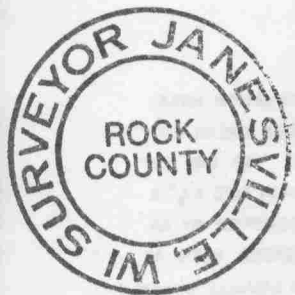


(c.) Was the corner restored through acceptance of (1) an obliterated evidence location, or, (2) a found perpetuated location?

(d.) Describe any material discrepancy between the location of the corner as restored or reestablished and the location of that corner as previously restored or reestablished by distance and direction. Show the discrepancy on the plan view drawing under (a), above. Show the distances between the corner as previously restored or reestablished and (1) the corner as restored or reestablished, and (2) to at least 4 of the witness monuments shown on the drawing in (a), above.

(e.) Was the corner reestablished through lost corner proportionate methods? If so, show the method, including the directions and distances to other public land survey corners used as evidence or used for proportioning in determining the corner location.

I, Donald Barnes, hereby certify that the corner points as identified by the corner code index were, in a field survey on August 29, 1989, established, re-established, monumented, re-monumented, recovered or restored as expressed below and in conformance with the regulations and rules as required in the current manual of survey instructions of the United States Department of Interior, Bureau of Land Management.



COUNTY SURVEYOR FILING DATA

Date of Computer Entry \_\_\_\_\_

Date Received \_\_\_\_\_

Date Microfilmed \_\_\_\_\_

Treasurer's Receipt No. \_\_\_\_\_

Number of Included Sheets 1

AFFIX YOUR LAND SURVEYOR SEAL.

CORNER CODE V 23

(B) Describe any record evidence, monument evidence, occupational evidence, testimonial evidence or any other material evidence you considered, and whether the monument was found or placed.

1836 ORSON LYON. ORIGINAL GOVERNMENT NOTES. STATED THAT CORNER IS 2651.55' FROM THE SE AND SW CORNERS OF SECTION 25.

1886 RUGER'S SUBDIVISION "WHEELER'S ADDITION TO BELOIT" BOOK 4 PAGE 37B SHOWS THE SW CORNER OF SECTION 25 AND STATES THAT THE SOUTH 1/16TH CORNER OF THAT SW 1/4 IS A TRIANGULAR POINTED LIMESTONE 15X14X12. HE DOES NOT STATE THE DISTANCE TO THE SECTION CORNERS. HE SHOWS THE SECTION LINE AND NORTH/SOUTH DISTANCES TO VARIOUS POINTS ON THE MAP.

1942 BATTERMAN. PLAT OF SURVEY OF THE FAIRBANKS MORSE COMPANY. HIS MAP SHOWS THE SOUTH LINE OF THE SW 1/4 OF SECTION 25. HE SHOWS NORTH/SOUTH DISTANCES FROM THE SECTION LINE TO VARIOUS MONUMENTS.

I COULD NOT FIND ANY OTHER SUBDIVISION PLATS, PLAT OF SURVEYS, OR COUNTY SURVEYOR MAPS THAT CONTAINED THE SOUTH QUARTER CORNER OF SECTION 25. I ALSO RESEARCHED THE BELOIT CITY ENGINEER'S OFFICE. I PLACED THE CORNER MIDWAY ON LINE BETWEEN THE SE AND SW CORNERS OF SECTION 25. THIS IS IN HARMONY WITH RUGER AND BATTERMAN'S NORTH/SOUTH DISTANCES TO MONUMENTS ON THEIR MAPS. THE BEARING OF THE SOUTH LINE OF SECTION 25 IS N89-47-54E (GRID BEARING) AND THE DISTANCE BETWEEN THE SE AND SOUTH QUARTER CORNER IS 2657.39 AND THE DISTANCE BETWEEN THE SOUTH QUARTER CORNER AND THE SW CORNER IS 2657.39.

C) Was the corner restored through acceptance of (1) an obliterated evidence location, or, (2) a found perpetuated location?

ACCEPTED OBLITERATED EVIDENCE LOCATION.

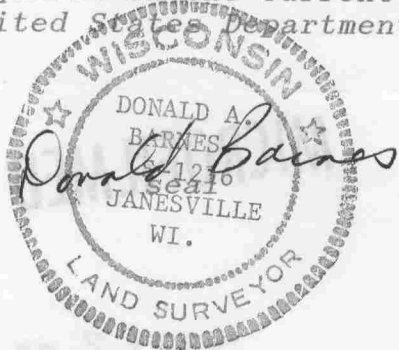
D) Describe any material discrepancy between the location of the corner as restored or reestablished and the location of that corner as previously restored or reestablished by distance and direction. Show the discrepancy on the plan view drawing under (a), above. Show the distances between the corner as previously restored or reestablished and (1) the corner as restored or reestablished, and (2) to at least 4 of the witness monuments shown on the drawing in (a), above.

NONE

(E) Was the corner reestablished through lost corner proportionate methods? If so, show the method, including the directions and distances to other public land survey corners used as evidence or used for proportioning the corner location.

NO

I, Donald Barnes, hereby certify that the corner points as identified by the corner code index were, in a field survey on, AUGUST 29, 1989, established, re-established, monumented, re-monumented, recovered or restored as expressed below and in conformance with the regulations and rules as required in the current manual of survey instructions of the United States Department of Interior, Bureau of Land Management.



AFFIX YOUR LAND SURVEYOR SEAL

COUNTY SURVEYOR FILING DATA

Date of computer entry \_\_\_\_\_

Date microfilmed \_\_\_\_\_

Number of included sheets 1  
CORNER CODE

SHEET 2 OF 2

V 23