

U.S. PUBLIC LAND SURVEY MONUMENT RECORD

For Public Land Survey Corners in:

WI ADMINISTRATIVE CODE A-E 7.08 REQUIREMENT

T. 1N., R. 12E

CORNER CODE INDEX

A	1	2	3	4	5	6	7	8	9	10	11	12	13	14	15	16	17	18	19	20	21	22	23	24	25
B																									
C	6																								
D		5																							
E			4																						
F				3																					
G					2																				
H						1																			
J	1																								
K		8																							
L			9																						
M				10																					
N					11																				
O						12																			
P							13																		
Q								14																	
R									15																
S										16															
T											17														
U												18													
V													19												
W														20											
X															21										
Y																22									
Z																	23								
																		24							
																			25						
																				26					
																					27				
																						28			
																							29		
																								30	
																									31
																									32
																									33
																									34
																									35
																									36

BELOIT TWP
ROCK COUNTY WI

IF AVAILABLE
ROCK COUNTY COORDINATES PREFERRED

North 211,592.16 Elev. _____

East 493,612.46

Hor. Datum COUNTY Vert. Datum _____

LATITUDE _____ ELLIPS. HT. _____

LONGITUDE _____

GPS (X) _____ TRAVERSE (X) _____

BASED ON THE FOLLOWING CONTROL:

PLACE MONUMENT SYMBOL AT PROPER LOCATION ON ABOVE INDEX

CORNER MONUMENT

WITNESS MONUMENT

(a)

BEARINGS ARE BASED ON:

FIELD BOOK _____ PAGE # _____

SHEET 1 OF 3

SHOW A PLAN VIEW DRAWING DEPICTING THE CORNER MONUMENT AND SURROUNDING PHYSICAL FEATURES, INCLUDING THE EXCAVATION AREA AND DEPTH.

PLANNING & ZONING COMMITTEE ADOPTED THE ABOVE FORM ON 12/2/1982

CORNER CODE R-23

BE592

(B) Describe any record evidence, monument evidence, occupational evidence, testimonial evidence or any other material evidence you considered, and whether the monument was found or placed.

1836 ORIG SURVEY SET QUARTER SECTION POST & RAISED A MOUND OF EARTH & SOD 4' SQUARE & 2 1/2 FEET HIGH. CALLS FOR 2652.54' TO SE & SW CORNERS OF SEC 24.

1910 CALDWELL PERRIGO PLACE BK 7 PG 42 CALLS FOR THE SOUTH LINE OF SEC 24.

1911 HEEBINK SUB "PERRIGO PLACE ADDITION" BK 7 PG 59. CALLS FOR THE SOUTH LINE OF SEC 24 AND WEST LINE OF SEC 24. STATES NOTHING ABOUT CORNER. CALLS FOR AN ANGLE OF 89-58-30 AT SW COR SEC 24 FROM W 1/4 COR TO ALONG SOUTH LINE OF SEC 24. CALLS FROM THE SW COR SEC 24 A LIMESTONE MON N89-58-30E 3188.52. THE ROW LINE AND CALLS TO THE SECTION CORNER INDICATES A STRAIGHT LINE BETWEEN THE SW & SE CORNERS OF SEC 24.

1917 BATTERMAN CITY OF БЕЛОIT NOTES. ANGLE OF 90-24 LOOKING SOUTH TO WEST,

1952 SHIMEALL #4253 CALLS FOR AN ANGLE OF 90-01-30 AT THE SE COR SEC 24 FROM THE S 1/4 COR SEC 24 TO THE E 1/4 COR SEC 24.

C) Was the corner restored through acceptance of (1) an obliterated evidence location, or, (2) a found perpetuated location?

RESTORED CORNER THROUGH ACCEPTANCE OF OBLITERATED EVIDENCE LOCATION. PLACED CORNER MIDWAY ON LINE WITH SW AND SE CORNERS OF SEC 24. THIS IS IN HARMONY WITH FOUND PROPERTY CORNERS AND RECORD ANGLES AT THE SW, SE, AND N 1/4 CORNERS OF SEC 24.

D) Describe any material discrepancy between the location of the corner as restored or reestablished and the location of that corner as previously restored or reestablished by distance and direction. Show the discrepancy on the plan view drawing under (a), above. Show the distances between the corner as previously restored or reestablished and (1) the corner as restored or reestablished, and (2) to at least 4 of the witness monuments shown on the drawing in (a), above.

(E) Was the corner reestablished through lost corner proportionate methods? If so, show the method, including the directions and distances to other public land survey corners used as evidence or used for proportioning the corner location.

NO

I, Donald Barnes, hereby certify that the corner points as identified by the corner code index were, in a field survey on, FEBRUARY 19, 1998, established, re-established, monumented, re-monumented, recovered or restored as expressed below and in conformance with the regulations and rules as required in the current manual of survey instructions of the United States Department of Interior, Bureau of Land Management.

Donald Barnes
2/19/98

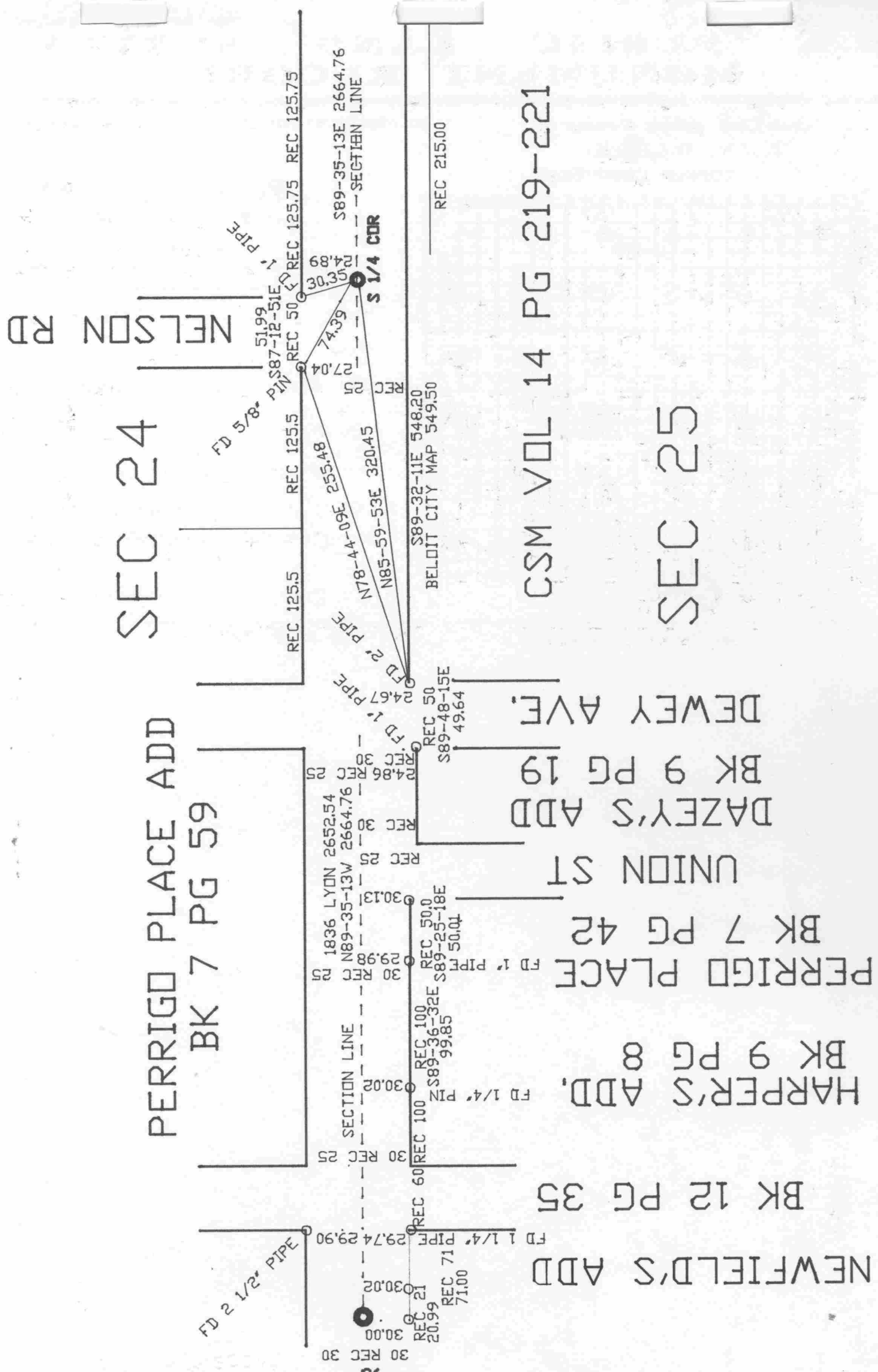
COUNTY SURVEYOR FILING DATA
Date of computer entry _____
Date microfilmed _____
Number of included sheets _____
CORNER CODE

EMBOSS LAND SURVEYOR SEAL

A-E 7.08 REQUIREMENT

R-23

Donald James
2/19/98



SEC 24

PERRIGO PLACE ADD
BK 7 PG 59

NEWFIELD'S ADD
BK 12 PG 35

HARPER'S ADD,
BK 9 PG 8

PERRIGO PLACE
BK 7 PG 42

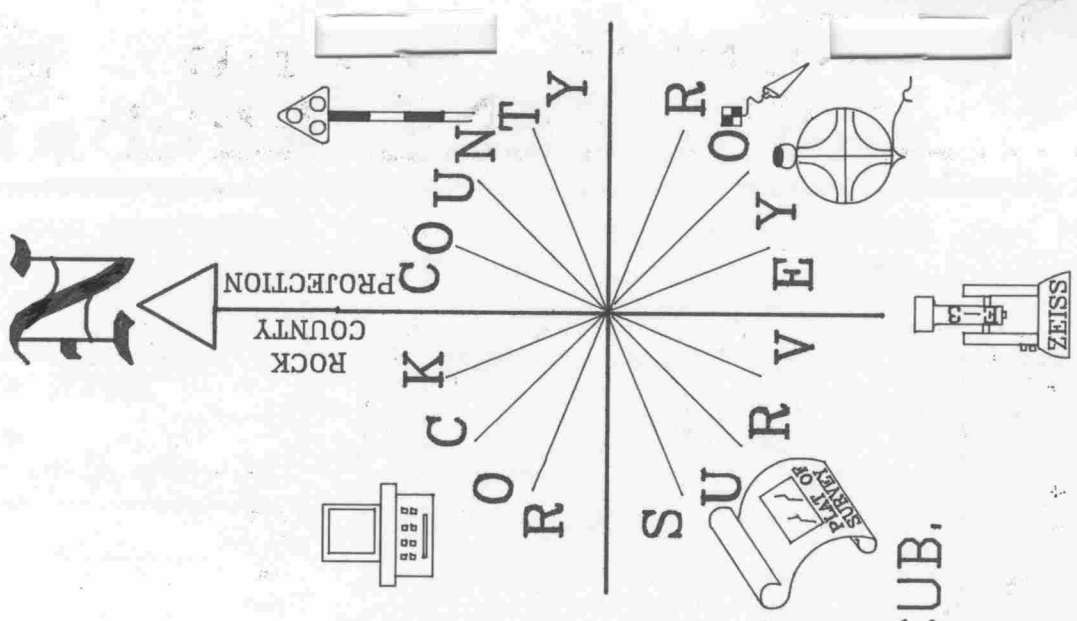
UNION ST
DAZEY'S ADD
BK 9 PG 19

DEWEY AVE.

CSM VOL 14 PG 219-221

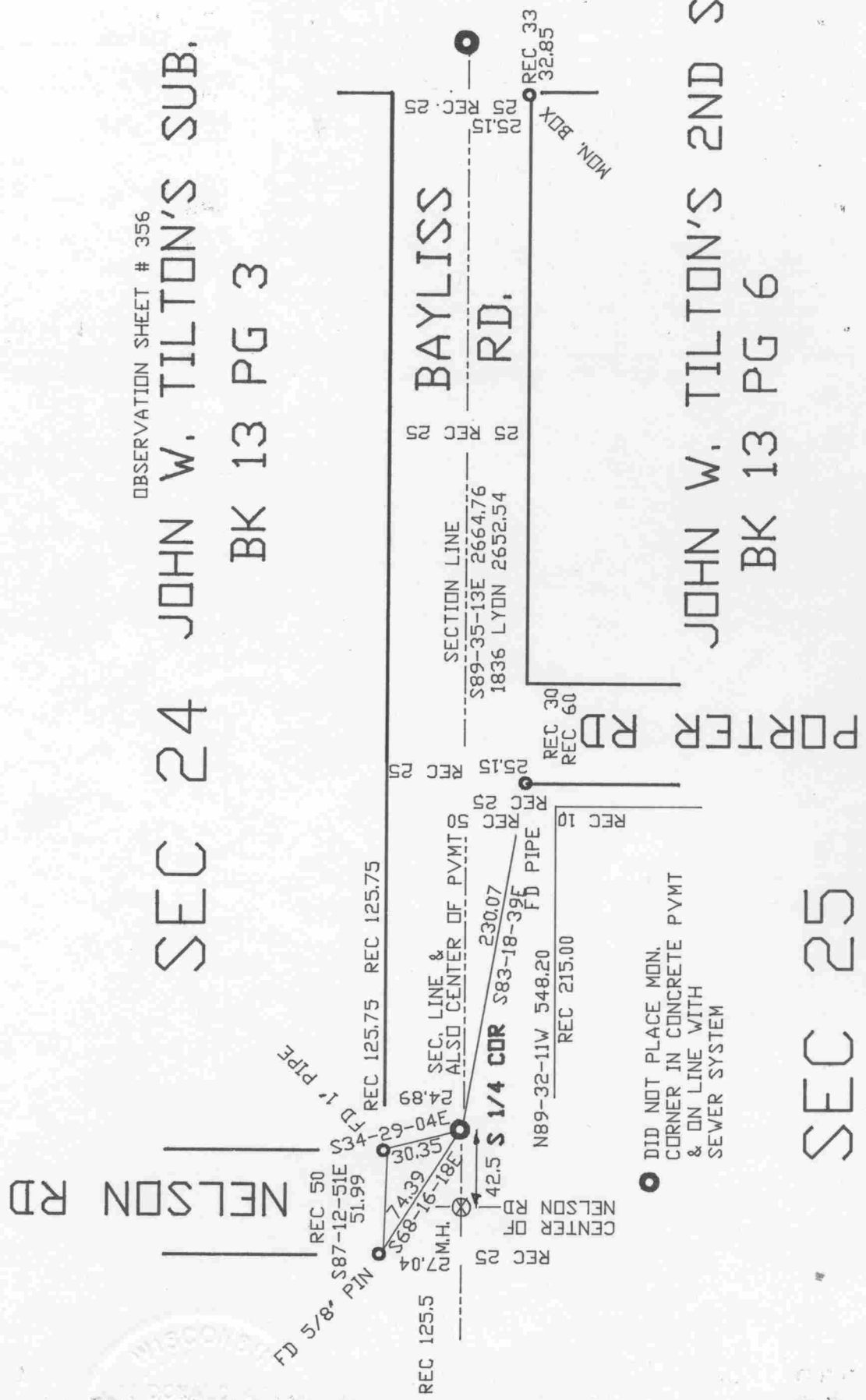
SEC 25

R-23



OBSERVATION SHEET # 356
 SEC 24 JOHN W. TILTON'S SUB.
 BK 13 PG 3

JOHN W. TILTON'S 2ND SUB.
 BK 13 PG 6



DID NOT PLACE MON.
 CORNER IN CONCRETE PVMT
 & ON LINE WITH
 SEWER SYSTEM

Donald Baues
 EMBOSSED SEAL
 2/19/98

R-23

SEC 25