

U.S. PUBLIC LAND SURVEY MONUMENT RECORD

For Public Land Survey Corners in:

WI ADMINISTRATIVE CODE A-E 7.08 REQUIREMENT

T. 1 N., R. 12 E

CORNER CODE INDEX

A	1	2	3	4	5	6	7	8	9	10	11	12	13	14	15	16	17	18	19	20	21	22	23	24	25
B																									
C	6																								
D																									
E																									
F																									
G	7																								
H																									
I																									
J																									
K	18	17																							
L																									
M																									
N																									
O	19	20																							
P																									
Q																									
R																									
S	30	29																							
T																									
U																									
V																									
W																									
X	31	32																							
Y																									
Z																									

BELOIT TWP
ROCK COUNTY WI

IF AVAILABLE
ROCK COUNTY COORDINATES PREFERRED

North 219,524.32 Elev. _____

East 493,684.84

Hor. Datum COUNTY Vert. Datum _____

LATITUDE _____ ELLIPS. HT. _____

LONGITUDE _____

GPS (X) _____ TRAVERSE (X) _____

BASED ON THE FOLLOWING CONTROL:

PLACE MONUMENT SYMBOL AT PROPER LOCATION ON ABOVE INDEX

CORNER MONUMENT WITNESS MONUMENT

BEARINGS ARE BASED ON: _____

FIELD BOOK _____ PAGE # _____

SHEET 1 OF 2

SHOW A PLAN VIEW DRAWING DEPICTING THE CORNER MONUMENT AND SURROUNDING PHYSICAL FEATURES, INCLUDING THE EXCAVATION AREA AND DEPTH.

PLANNING & ZONING COMMITTEE ADOPTED THE ABOVE FORM ON 12/2/1982

CORNER CODE L 23

BE1559

(B) Describe any record evidence, monument evidence, occupational evidence, testimonial evidence or any other material evidence you considered, and whether the monument was found or placed.

1933 BATTERMAN SR. MAP #328 SET PIPE.

1971 LEE - SUBDIVISION PLATS VOL 25 PG 31 FOUND PIPE.

1971 BATTERMAN JR. MAP #1200 (SUBDIVISIONS) FOUND MONUMENT.

FOUND 2 1/2" PIPE AT THE INTERSECTION OF THE QUARTER LINES.

C) Was the corner restored through acceptance of (1) an obliterated evidence location, or, (2) a found perpetuated location?

ACCEPTED FOUND PIPE.

D) Describe any material discrepancy between the location of the corner as restored or reestablished and the location of that corner as previously restored or reestablished by distance and direction. Show the discrepancy on the plan view drawing under (a), above. Show the distances between the corner as previously restored or reestablished and (1) the corner as restored or reestablished, and (2) to at least 4 of the witness monuments shown on the drawing in (a), above.

(E) Was the corner reestablished through lost corner proportionate methods? If so, show the method, including the directions and distances to other public land survey corners used as evidence or used for proportioning the corner location.

I, Donald Barnes, hereby certify that the corner location as identified by the corner code index was determined by me under by direction and control and that this U.S. Public Land Survey Monument Record is correct and complete to the best of my knowledge and belief.

seal
Donald Barnes
July 18, 1997
emboss

Number of included sheets _____

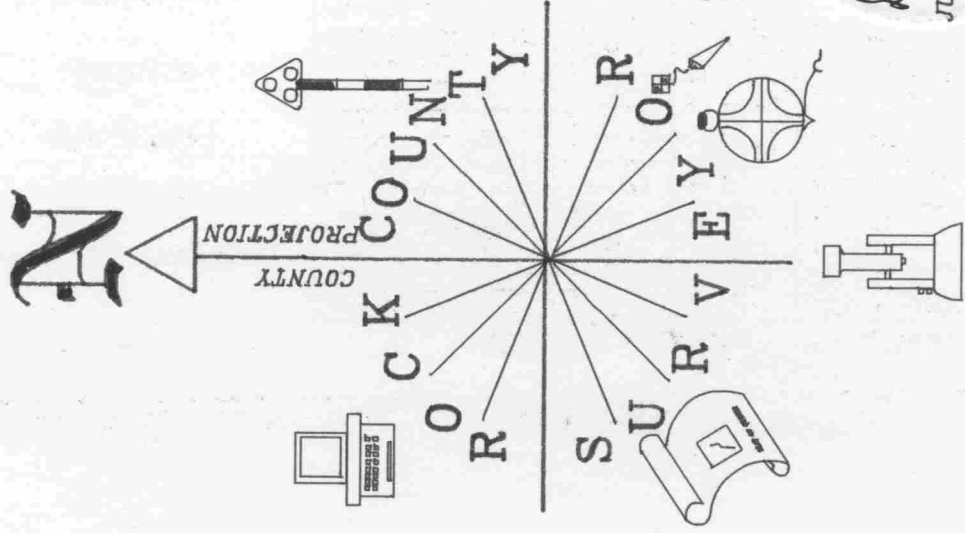
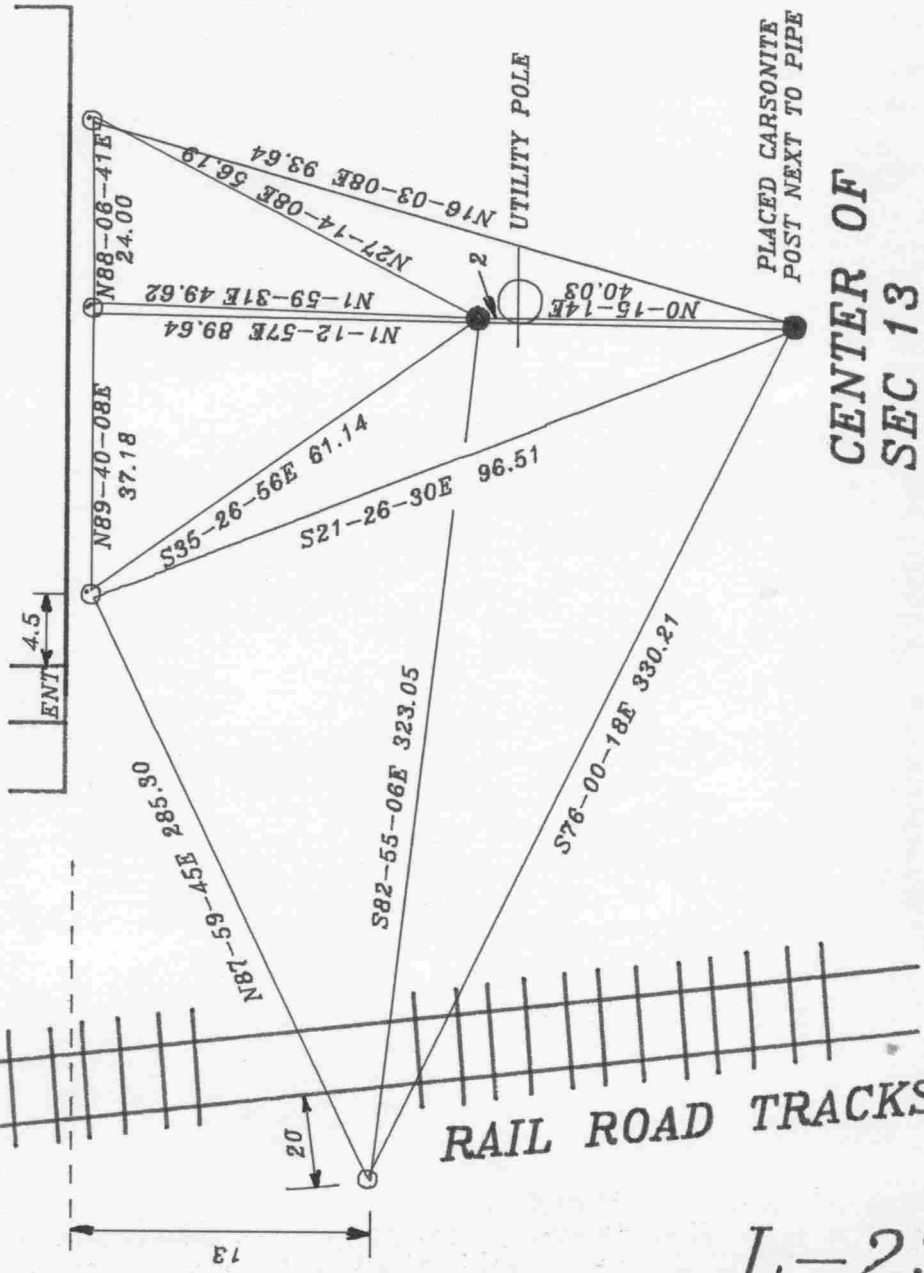
A-E 7.08 REQUIREMENT

CORNER CODE

L-23

FB #2 PG 16 & OBS. SHEET 452
 ○ 3/4X24" REROD
 ● FD 2 1/2" PIPE

COMMERCIAL BUILDING



Donald Barnes
 JULY 18. 1997
 EMBOSS SEAL

L-23