

# U.S. PUBLIC LAND SURVEY MONUMENT RECORD

For Public Land Survey Corners in:

WI ADMINISTRATIVE CODE A-E 7.08 REQUIREMENT

T. 1 N., R. 12 E

CORNER CODE INDEX

A	1	2	3	4	5	6	7	8	9	10	11	12	13	14	15	16	17	18	19	20	21	22	23	24	25
B	6																								
C		5																							
D			4																						
E				3																					
F					2																				
G	1																								
H		8																							
I			9																						
J				10																					
K					11																				
L	18					16																			
M		11					15																		
N			16					14																	
O				17					13																
P	19				20					22															
Q						21					23														
R							22					24													
S								21																	
T	30								26																
U		29																							
V			28																						
W				27																					
X	30																								
Y		31																							
Z			32																						

BELOIT TWP  
ROCK COUNTY WI

IF AVAILABLE  
ROCK COUNTY COORDINATES PREFERRED

North \_\_\_\_\_ Elev. \_\_\_\_\_

East \_\_\_\_\_

Hor. Datum \_\_\_\_\_ Vert. Datum \_\_\_\_\_

LATITUDE \_\_\_\_\_ ELLIPS. HT. \_\_\_\_\_

LONGITUDE \_\_\_\_\_

GPS (X) \_\_\_\_\_ TRAVERSE (X) \_\_\_\_\_

BASED ON THE FOLLOWING CONTROL:

PLACE MONUMENT SYMBOL  AT PROPER LOCATION ON ABOVE INDEX

CORNER MONUMENT

WITNESS MONUMENT

(a)

BEARINGS ARE BASED ON:

*See Back*

FIELD BOOK \_\_\_\_\_ PAGE # \_\_\_\_\_

SHEET \_\_\_\_\_ OF \_\_\_\_\_

SHOW A PLAN VIEW DRAWING DEPICTING THE CORNER MONUMENT AND SURROUNDING PHYSICAL FEATURES, INCLUDING THE EXCAVATION AREA AND DEPTH.

PLANNING & ZONING COMMITTEE ADOPTED THE ABOVE FORM ON 12/2/1982

CORNER CODE Z-3.5

(B) Describe any record evidence, monument evidence, occupational evidence, testimonial evidence or any other material evidence you considered, and whether the monument was found or placed.

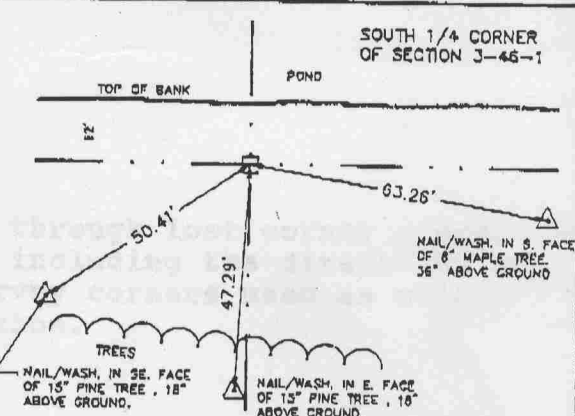
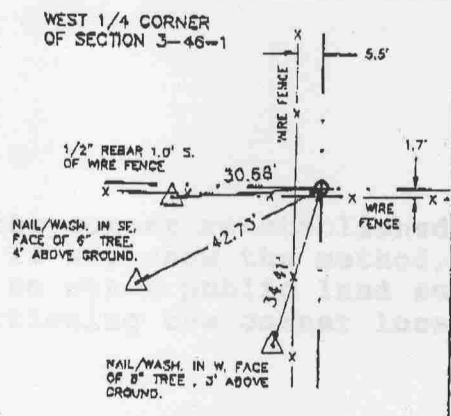
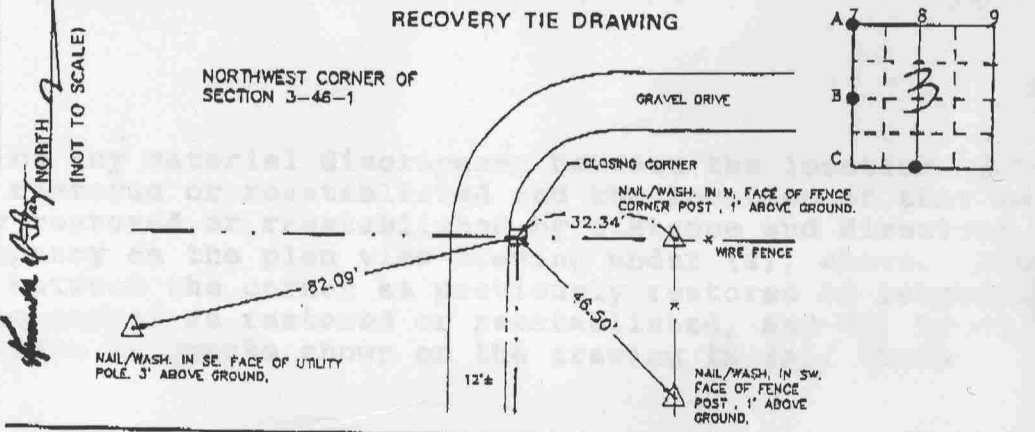
9442386 08/15/1994 11:15A Ken Staaf, Winnebago County Recorder

# "MONUMENT RECORD"

OF  
 LAND SURVEY MONUMENTS SITUATED IN SECTION 3, TOWNSHIP 46 NORTH,  
 RANGE 1 EAST, OF THE 3RD PRINCIPAL MERIDIAN, WINNEBAGO  
 COUNTY, ILLINOIS.

MONUMENT DESCRIPTION AND REMARKS:  
N.W. CORNER - FOUND CONCRETE MONUMENT  
W. 1/4 CORNER - SET 3/4" IRON PIN  
S. 1/4 CORNER - FOUND CONCRETE MONUMENT

### RECOVERY TIE DRAWING



STATE OF ILLINOIS SS  
 COUNTY OF WINNEBAGO

I, GORDON F. STANNARD, HEREBY CERTIFY THAT THIS DOCUMENT WAS PREPARED UNDER MY DIRECTION IN ACCORDANCE WITH THE PUBLIC ACT 79-649 AND THE ABOVE DATA IS GIVEN UNDER MY HAND AND SEAL THIS 12TH DAY OF AUGUST, 1994 A.D.

*Gordon F. Stannard*  
 ILLINOIS REGISTERED LAND SURVEYOR NO. 2388

OR  
 UNITED STATES PROFESSIONAL LAND SURVEYOR STATE OF ILLINOIS  
 LOVES PARK, ILLINOIS

SPACE RESERVED FOR RECORDING OFFICER INDEX CODE

A7  
 B7  
 C8 ✓

Z-3.5