

U.S. PUBLIC LAND SURVEY MONUMENT RECORD

For Public Land Survey Corners in:

WI ADMINISTRATIVE CODE A-E 7.08 REQUIREMENT

T. 2N., R. 10 E

CORNER CODE INDEX

A	1	2	3	4	5	6	7	8	9	10	11	12	13	14	15	16	17	18	19	20	21	22	23	24	25
B																									
C	6																								
D																									
E																									
F																									
G	7																								
H																									
I																									
J																									
K																									
L	18																								
M																									
N																									
O																									
P	19																								
Q																									
R																									
S																									
T	30																								
U																									
V																									
W																									
X	31																								
Y																									
Z																									

SPRING VALLEY TWP

ROCK COUNTY WI

IF AVAILABLE
ROCK COUNTY COORDINATES PREFERRED

North _____ Elev. _____

East _____

Hor. Datum _____ Vert. Datum _____

LATITUDE _____ ELLIPS. HT. _____

LONGITUDE _____

GPS (X) _____ TRAVERSE (X) _____

BASED ON THE FOLLOWING CONTROL:

PLACE MONUMENT SYMBOL AT PROPER LOCATION ON ABOVE INDEX

CORNER MONUMENT

WITNESS MONUMENT

(a)

BEARINGS ARE BASED ON:

FIELD BOOK _____ PAGE # _____

SHEET 1 OF 2

SHOW A PLAN VIEW DRAWING DEPICTING THE CORNER MONUMENT AND SURROUNDING PHYSICAL FEATURES, INCLUDING THE EXCAVATION AREA AND DEPTH.

PLANNING & ZONING COMMITTEE ADOPTED THE ABOVE FORM ON 12/2/1982

CORNER CODE G-17(1)

SP538

(B) Describe any record evidence, monument evidence, occupational evidence, testimonial evidence or any other material evidence you considered, and whether the monument was found or placed.

- 1874 RUGER VOL 2 PG 140 FD OLD STAKE & STUMP OF SE BT SHOULD READ S20E INSTEAD OF S15E. PLANTED IN PLACE OF OLD STAKE HH STONE 26X15X9. VAR 5-56 2641.98 TO CENTER SEC 11; VAR 5-33 2664.42 TO NW COR SEC 11.
- 1929 BATTERMAN VOL 3 PG 158 FD COR. DISTURBED. REFERENCED TO HOLES IN CULVERT
- 1932 SUNNY VOL 3 PG 149 SET 1" IRON PIPE & REFERENCED TO HOLES IN CULVERT. NOTE: THESE MONUMENTS WERE REFERENCED BY BATTERMAN SEP 30, 1929 BEFORE PAVING #92 & RESET BY ME AS SHOWN.
- 1968 BATTERMAN VOL 4 PG 360 FD 1" PIPE IN CONC. PVMT. REFERENCED TO DRILL HOLES IN CONC. CULVERT.
- 1975 BARNES VOL 5 PG 90 2618.71 TO SW COR SEC 11.
- 1986 BARNES G-17 FD 1"X8" PIPE. REPLACED WITH POLY. MON. 1 EAST OF CENTER OF PVMT. REFERENCED SAME. FOUND DRILL HOLES TO SE & SW.

FD POLY MONUMENT 1.4' EAST OF CENTER OF PVMT & ON LINE SIDE OF OLD BOX CULVERT. IN HARMONY WITH NE REFERENCE PIPE.

C) Was the corner restored through acceptance of (1) an obliterated evidence location, or, (2) a found perpetuated location?

ACCEPTED FOUND POLY. MONUMENT.

D) Describe any material discrepancy between the location of the corner as restored or reestablished and the location of that corner as previously restored or reestablished by distance and direction. Show the discrepancy on the plan view drawing under (a), above. Show the distances between the corner as previously restored or reestablished and (1) the corner as restored or reestablished, and (2) to at least 4 of the witness monuments shown on the drawing in (a), above.

(E) Was the corner reestablished through lost corner proportionate methods? If so, show the method, including the directions and distances to other public land survey corners used as evidence or used for proportioning the corner location.

I, Donald Barnes, hereby certify that the corner location as identified by the corner code index was determined by me under my direction and control and that this U.S. Public Land Survey Monument Record is correct and complete to the best of my knowledge and belief.

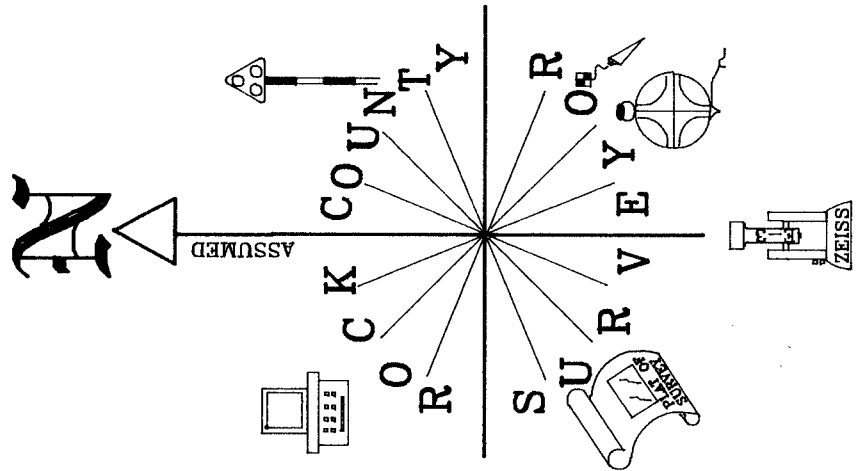
Seal

Donald Barnes
May 15 2000
Emboss

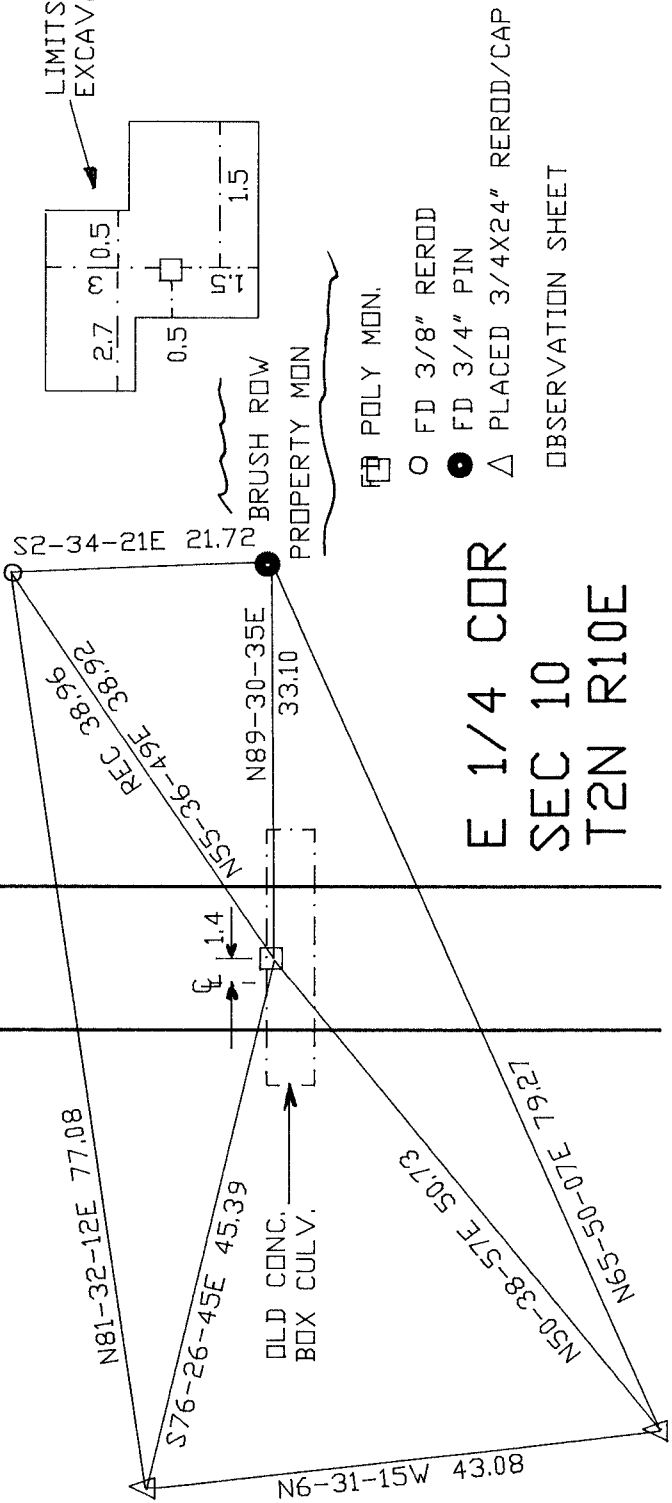
Number of included sheets 1

CORNER CODE **G-17(1)**

A-E 7.08 REQUIREMENT



STH 213



E 1/4 COR
SEC 10
T2N R10E

Donald Barnes
May 15, 2000

G-17(1)