

PLAT AND RECORD

Of a Survey on Section 13, 24 T 4 R 14 E. of the 4 P. M. in LIMA Township

Rock County, Wisconsin, made AUGUST the 21st 1974

I hereby certify that the following is a correct record of said survey as made by me.

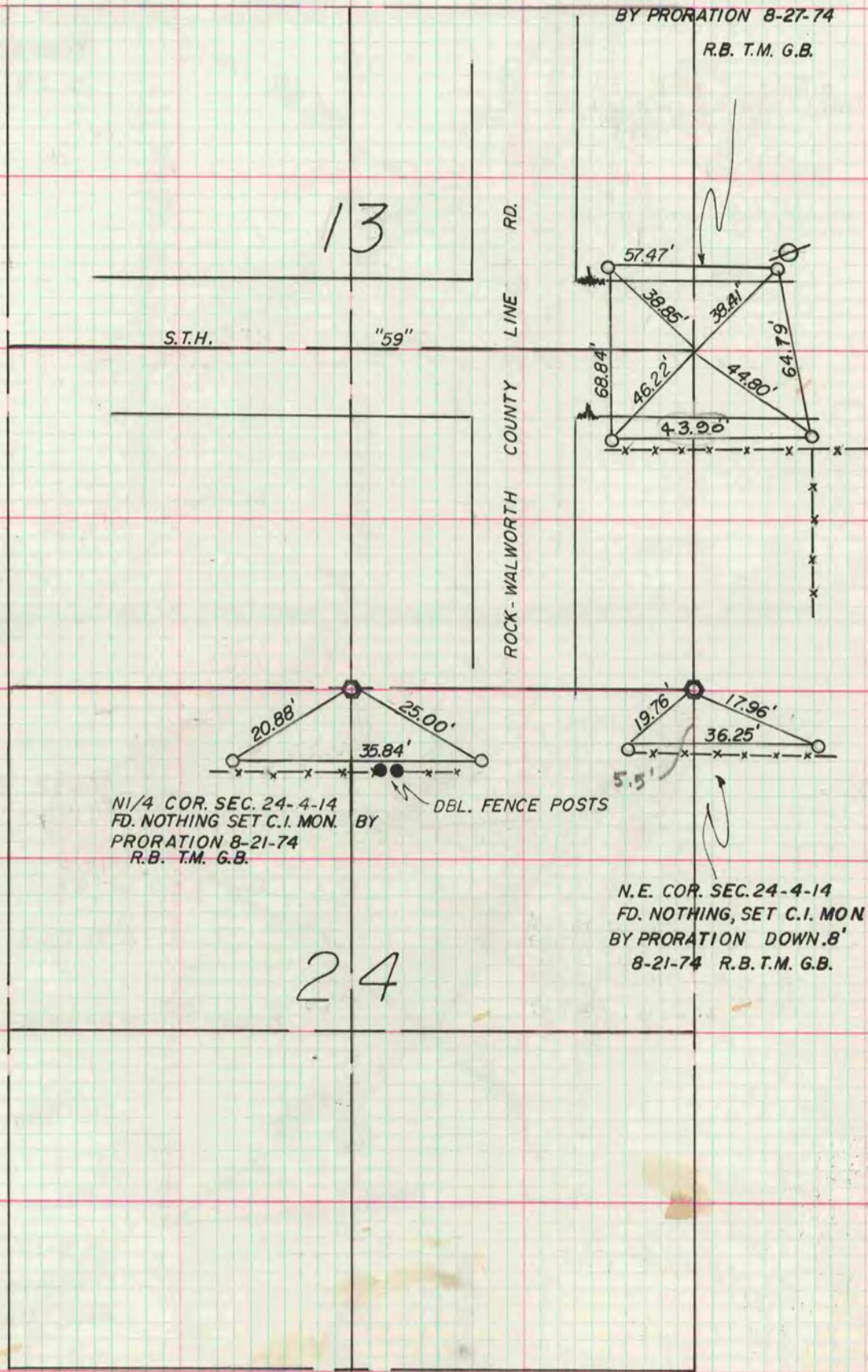
COUNTY BUILDING
IN CITY OF BELOIT

Hugh J. De

County Surveyor.

BOOK 176 PAGES 1, 2, & 4

AT E1/4 COR. SEC. 13-4-14
FD. NOTHING, SET C.I. MON.
BY PRORATION 8-27-74
R.B. T.M. G.B.



N1/4 COR. SEC. 24-4-14
FD. NOTHING SET C.I. MON.
BY PRORATION 8-21-74
R.B. T.M. G.B.

N.E. COR. SEC. 24-4-14
FD. NOTHING, SET C.I. MON.
BY PRORATION DOWN .8'
8-21-74 R.B. T.M. G.B.