

PLAT AND RECORD

Of a Survey on Section 6 T 1 R 12 E. of the 4 P. M. in Beloit Township

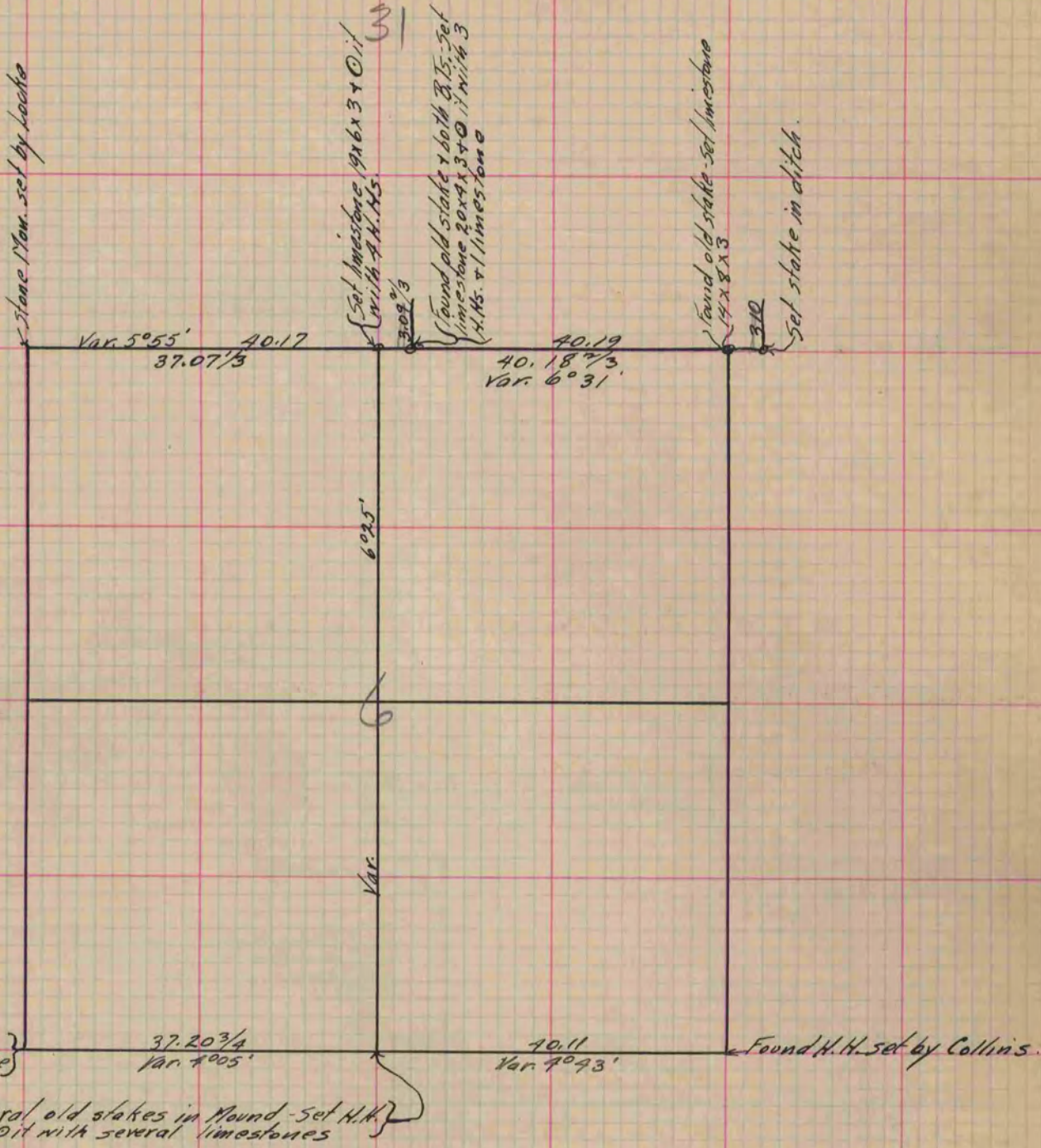
Rock County, Wisconsin, made November the 24 1870

I hereby certify that the following is a correct record of said survey as made by me.

COUNTY BUILDING
IN CITY OF BELOIT

(Signed) Edward Ruger
RUGER

{ Dept.
County Surveyor.



Copied from Page 30 Vol. 2 Original County Surveyors Record.