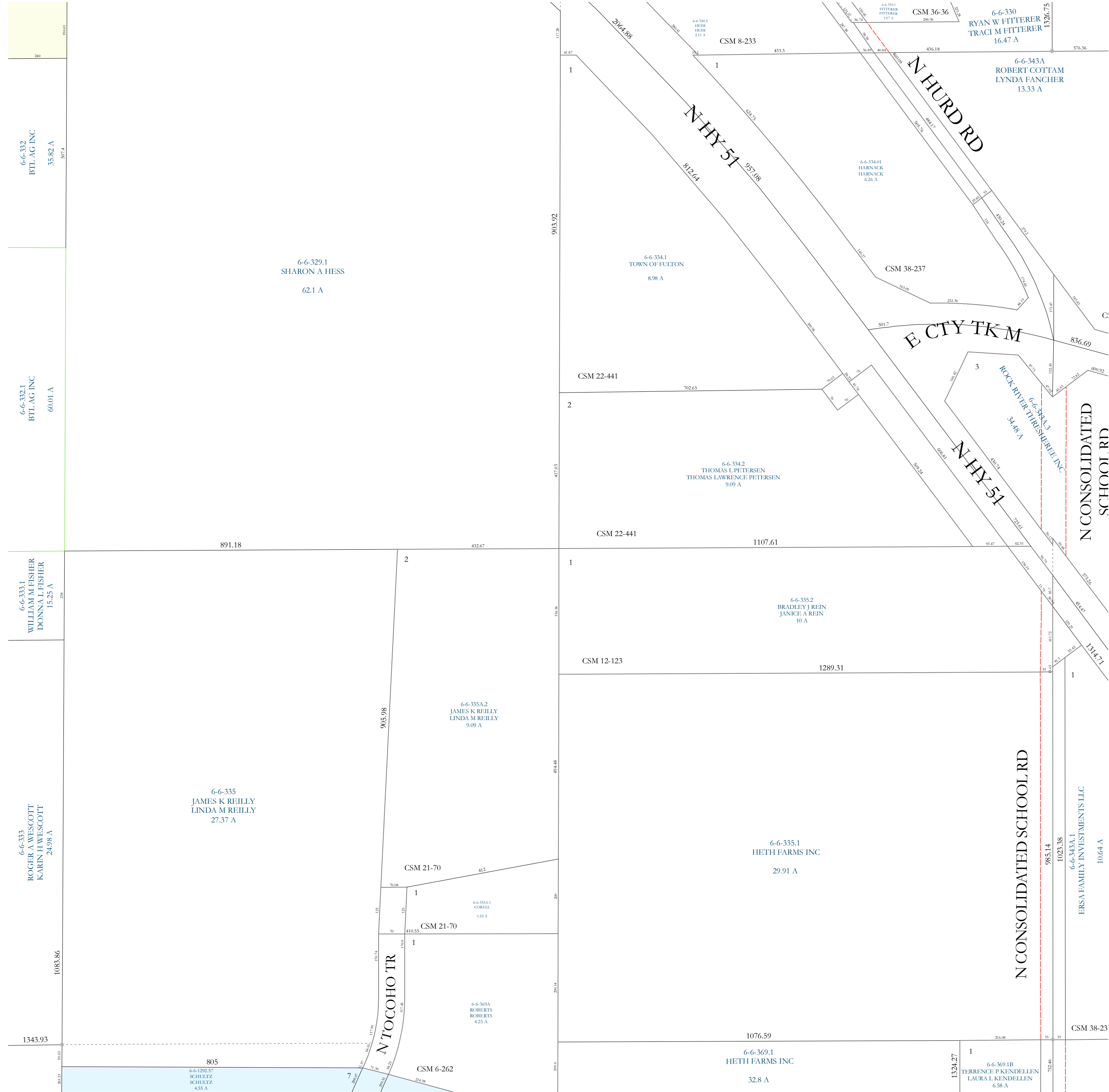


22 NE



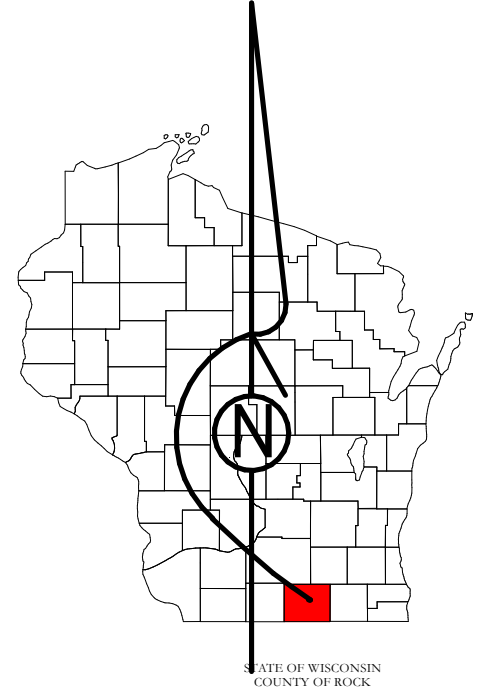
27 NE

# Property Division Map

Town of  
Fulton

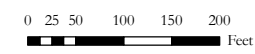
T. 4 N. - R. 12 E.

Section 22 SE



PREPARED BY  
**REAL PROPERTY DESCRIPTION DEPARTMENT**  
 USING  
**ROCK COUNTY GEOGRAPHIC INFORMATION SYSTEM**

DUPLICATION OF THIS MAP PROHIBITED WITHOUT THE WRITTEN CONSENT OF THE REAL PROPERTY DESCRIPTION DEPARTMENT.  
 THIS MAP WAS PREPARED PURSUANT TO SECTION 70.09 WIS. STATS. USING PUBLIC RECORDS. IT IS NOT INTENDED TO BE A SUBSTITUTE FOR AN ACTUAL FIELD SURVEY AND IS ADVISORY ONLY.  
 DISTANCES SHOWN ON THIS MAP WERE PRODUCED BY THE GIS SYSTEM AND ARE FOR REFERENCE ONLY. SEE DOCUMENT OF RECORD FOR ACTUAL DISTANCE.



- Gap
- Overlap
- City of Edgerton
- CSM
- CSMHYDRO
- CSMLOT
- CSMLOTHYDRO
- MFL
- dam
- easement
- hydro
- lots
- parcels
- parcelshydro
- roadrw

See Pages

January 1, 2022

22 SE