

# U.S. PUBLIC LAND SURVEY MONUMENT RECORD

For Public Land Survey Corners in:

WI ADMINISTRATIVE CODE A-E 7.08 REQUIREMENT

T. 3 N., R. 12 E

### CORNER CODE INDEX

A	1	2	3	4	5	6	7	8	9	10	11	12	13	14	15	16	17	18	19	20	21	22	23	24	25
B																									
C	6																								
D																									
E																									
F																									
G	1																								
H																									
J																									
K																									
L	18																								
M																									
N																									
O																									
P	19																								
Q																									
R																									
S																									
T	30																								
U																									
V																									
W																									
X	31																								
Y																									
Z																									

JANESVILLE TWP

ROCK COUNTY WI

IF AVAILABLE  
ROCK COUNTY COORDINATES PERFERRED

North \_\_\_\_\_ Elev. \_\_\_\_\_

East \_\_\_\_\_

Hor. Datum \_\_\_\_\_ Vert. Datum \_\_\_\_\_

LATITUDE \_\_\_\_\_ ELLIPS. HT. \_\_\_\_\_

LONGITUDE \_\_\_\_\_

GPS (X) \_\_\_\_\_ TRAVERSE (X) \_\_\_\_\_

BASED ON THE FOLLOWING CONTROL:

PLACE MONUMENT SYMBOL  AT PROPER LOCATION ON ABOVE INDEX

CORNER MONUMENT

WITNESS MONUMENT

(a)

BEARINGS ARE BASED ON:

FIELD BOOK \_\_\_\_\_ PAGE # \_\_\_\_\_

SHEET 1 OF 2

SHOW A PLAN VIEW DRAWING DEPICTING THE CORNER MONUMENT AND SURROUNDING PHYSICAL FEATURES, INCLUDING THE EXCAVATION AREA AND DEPTH.

PLANNING & ZONING COMMITTEE ADOPTED THE ABOVE FORM ON 12/2/1982

CORNER CODE R15(2)

ja588

(B) Describe any record evidence, monument evidence, occupational evidence, testimonial evidence or any other material evidence you considered, and whether the monument was found or placed.

- 1833 ORIG SURVEY 2607.00 TO SE & SW CORNERS OF SEC 22. WO 18 N5E 15 & WO 19 S5W 34.
- 1859 RUGER VOL 1 PG 98 OLD WT STANDING. WO. 18 N5E 15 W.O 19 S5W 24 BUT BEING IN HIGHWAY TOOK NEW ONES W.O. 17 S60-20W 78 1/3, WO. 20 N71- 10W 90 1/2 VAR 8-35 2612.94' VAR 8-35 TO SW COR SEC 22
- 1860 RUGER VOL 1 PG 134 USED TO SUBDIVIDE SECTION 22 STATES NOTHING ABOUT CORNER.
- 1875 RUGER VOL 2 PG 186 FOUND CORNER ESTABLISHED BY SELF DROVE IRON PIN & SURROUNDED WITH WHITE BRICKS
- 1877 RUGER VOL 2 PG 226 FOUND IRON PIN SURROUNDED BY 3 WHITE BRICKS AS ESTABLISHED BY SELF. 2617.56' VAR 7-00 TO NE COR SEC 27, 2637.36 TO CENTER OF SEC 27, & 5291.88' TO S 1/4 COR SEC 27.
- 1894 BLEEDHORN VOL 2 PG 487 FOUND CORNER SET BY RUGER. 1318.68 TO 1/16TH CORNER TO THE SOUTH.
- 1900 KERCH VOL 3 PG 1 USED TO ESTABLISH THE N/S LINE OF SECTION 27
- 1966 BATTERMAN JR. VOL 4 PG 243 FOUND PIPE IN NORTH EDGE OF PAVEMENT. REFERENCED SAME.
- 1981 BARNES VOL 6 PG 140 REPLACED PIPE WITH ALUMINUM MONUMENT
- 1987 BARNES R15 ADDED RISER TO ALUMINUM MONUMENT & REFERENCED MONUMENT.
- 1996 BARNES R15(1) REFERENCED FOUND ALUMINUM MONUMENT.

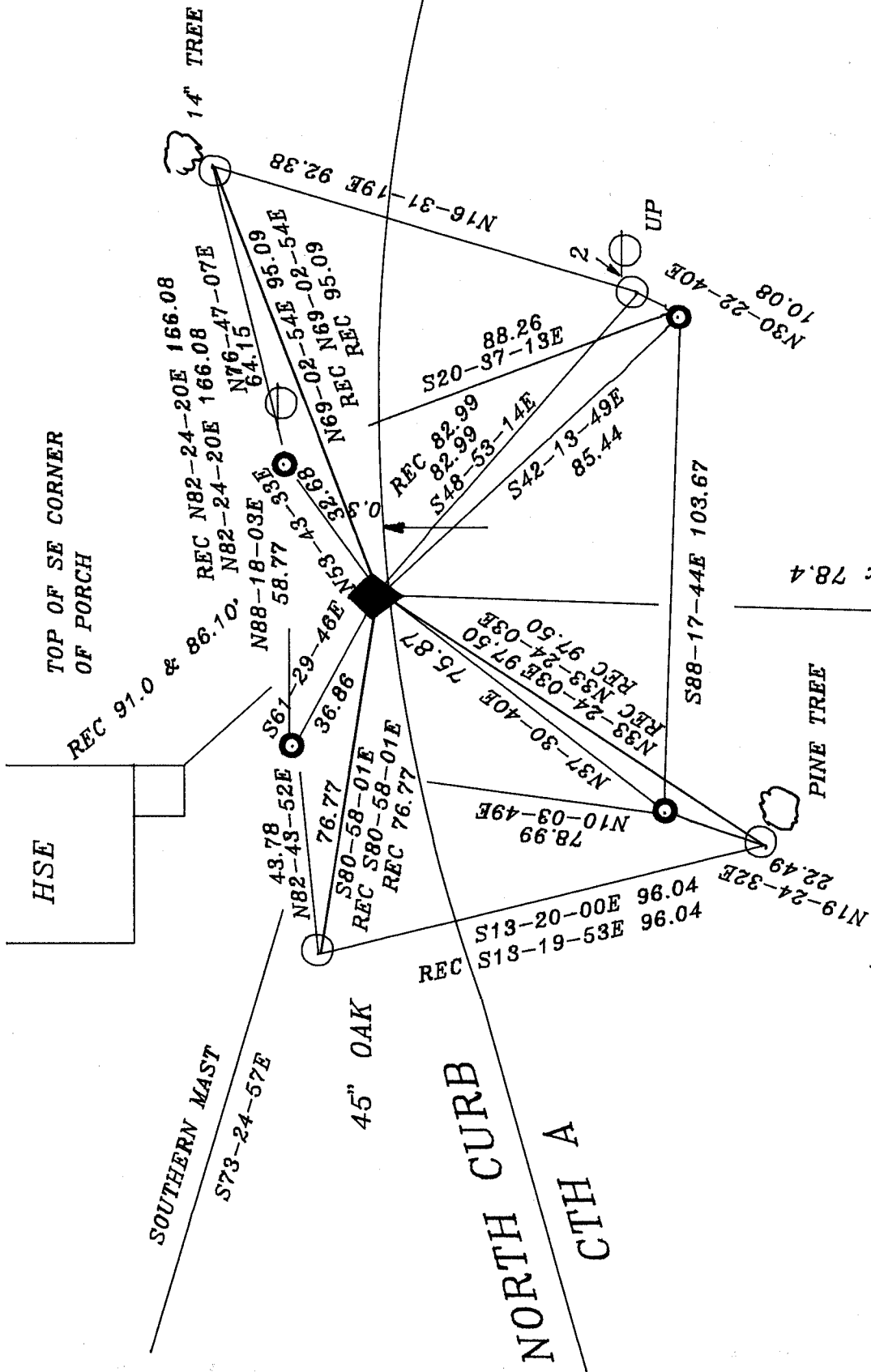
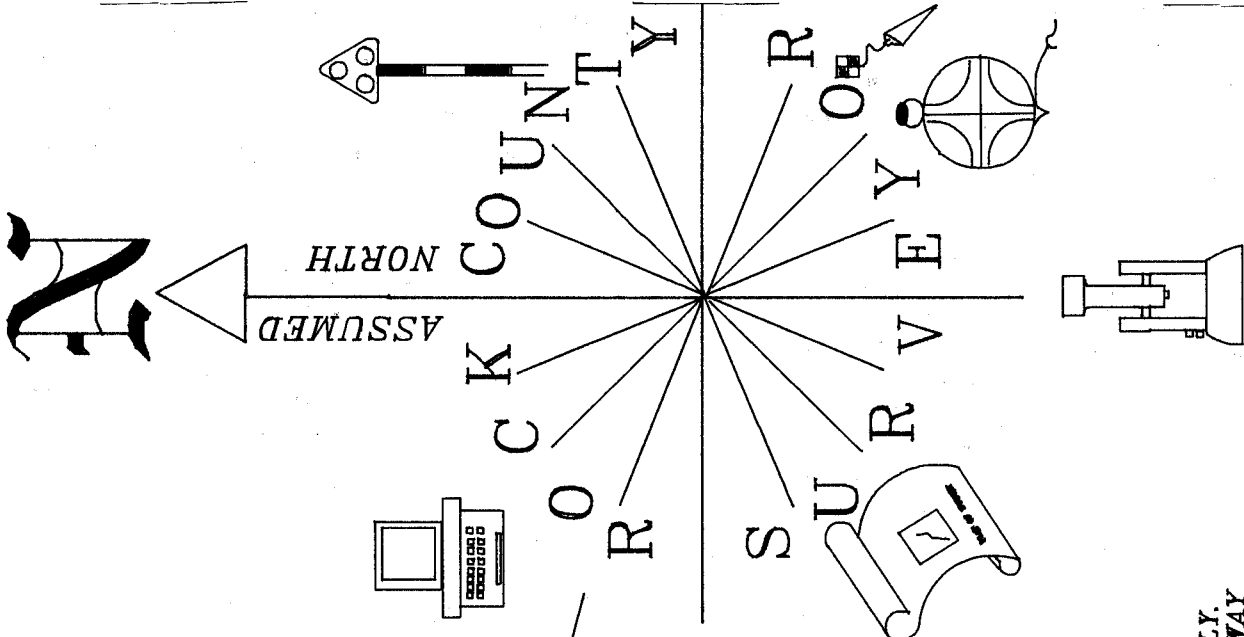
FOUND ALUM. MONUMENT. MONUMENTATION PROJECT CALLS FOR 2622.09 (REC 2612.94) TO SW COR SEC 22, 2621.01 (REC 2617.56) TO SE COR SEC 22, & 5302.57 (REC 5291.88) TO S 1/4 COR SEC 27. TOWARDS END OF CONSTRUCTION I PLACED A POLY. MONUMENT. PROJECT ENGINEER PLACED ALUM. ROCK COUNTY REFERENCE CAPS IN CONCRETE AND D.O.T. ROUND MONUMENT BOX AROUND POLY. I REFERENCED THE DISKS IN CONCRETE TO THE POLY MONUMENT IN THE CAST IRON ROUND MONUMENT BOX.

C) Was the corner restored through acceptance of (1) an obliterated evidence location, or, (2) a found perpetuated location?  
ACCEPTED FOUND MONUMENT.

D) Describe any material discrepancy between the location of the corner as restored or reestablished and the location of that corner as previously restored or reestablished by distance and direction. Show the discrepancy on the plan view drawing under (a), above. Show the distances between the corner as previously restored or reestablished and (1) the corner as restored or reestablished, and (2) to at least 4 of the witness monuments shown on the drawing in (a), above.

(E) Was the corner reestablished through lost corner proportionate methods? If so, show the method, including the directions and distances to other public land survey corners used as evidence or used for proportioning the corner location.

I, Donald Barnes, hereby certify that the corner location as identified by the corner code index was determined by me under by direction and control and that this U.S. Public Land Survey Monument Record is correct and complete to the best of my knowledge and belief.



- ◆ POLY MON. WITH D.O.T. ROUND CAST IRON MON. BOX AROUND POLY. 9 EAST OF WEST EDGE OF DRIVEWAY
- 3/4X24" REROD
- ROCK COUNTY ALUM. DISK IN D.O.T. CONCRETE

HSE

TOP OF SE CORNER OF PORCH

REC 91.0 & 86.10

SOUTHERN MAST  
S73-24-57E

45" OAK

NORTH CURB  
CTH A

PINE TREE

S 1/4 COR  
SEC 22

*Donald Barnes*

EMBOSS SEAL

OCT 22 1996

R15(2)

HSE  
ENCLOSED PORCH

REC 83.6 & 78.4