

U.S. PUBLIC LAND SURVEY MONUMENT RECORD

For Public Land Survey Corners in:
T. 3 N., R. 12 E

WI ADMINISTRATIVE CODE A-E 7.08 REQUIREMENT

CORNER CODE INDEX

A	2	3	4	5	6	7	8	9	10	11	12	13	14	15	16	17	18	19	20	21	22	23	24	25												
B																																				
C	6																																			
D		5																																		
E			4																																	
F				3																																
G					2																															
H	1																																			
I		8																																		
J			9																																	
K				10																																
L	18																																			
M		11																																		
N			16																																	
O				15																																
P					14																															
Q						13																														
R	19																																			
S		20																																		
T			21																																	
U				22																																
V					23																															
W						24																														
X	30																																			
Y		29																																		
Z			28																																	
				27																																
					26																															
						25																														
							30																													
								29																												
									28																											
										27																										
											26																									
												25																								
													24																							
														23																						
															22																					
																21																				
																	20																			
																		19																		
																			18																	
																				17																
																					16															
																						15														
																							14													
																								13												
																									12											
																										11										
																											10									
																												9								
																													8							
																														7						
																															6					
																																5				
																																	4			
																																		3		
																																			2	
																																				1

JANESVILLE TWP
ROCK COUNTY WI

IF AVAILABLE
ROCK COUNTY COORDINATES PREFERRED

North _____ Elev. _____

East _____

Hor. Datum _____ Vert. Datum _____

LATITUDE _____ ELLIPS. HT. _____

LONGITUDE _____

GPS (X) _____ TRAVERSE (X) _____

BASED ON THE FOLLOWING CONTROL:

PLACE MONUMENT SYMBOL AT PROPER LOCATION ON ABOVE INDEX

CORNER MONUMENT

WITNESS MONUMENT

(a)

BEARINGS ARE BASED ON:

FIELD BOOK _____ PAGE # _____

SHEET 1 OF 4

SHOW A PLAN VIEW DRAWING DEPICTING THE CORNER MONUMENT AND SURROUNDING PHYSICAL FEATURES, INCLUDING THE EXCAVATION AREA AND DEPTH.

PLANNING & ZONING COMMITTEE ADOPTED THE ABOVE FORM ON 12/2/1982

CORNER CODE J-25(1)

JA553

(B) Describe any record evidence, monument evidence, occupational evidence, testimonial evidence or any other material evidence you considered, and whether the monument was found or placed.

- 1835 MULLETT *NORTH ON EAST SIDE OF SEC 13*
2640 SET QUARTER SECTION POST IN PRAIRIE IN MOUND
 PIT 2.64' EAST
5280 SET POST COR SECTION 12 & 13 IN PRAIRIE IN
 MOUND. PIT 1.98' SOUTH LAND ROLLING PRAIRIE
 SECOND RATE.
 NORTH ON EAST SIDE SECTION 12
2640 SET QUARTER SECTION POST IN PRAIRIE BURR OAK 10
 N1W 577.5'
3630 LEAVE PRAIRIE
5280 SET POST COR SEC 1 & 12 BURR OAK 18 N50 1/2W
 57.42', W. OAK S34 1/2W 23.76'
 LAND ROLLING SECOND RATE SCATTERING W. B &
 BURR OAK NOV 29 1835
- 1836 ORSON LYON *EAST RANDOM BETWEEN SECTIONS 12 & 13*
5313.66 INTERSECTED RANGE LINE 4.62' NORTH OF POST.
 LAND ROLLING PRAIRIE & FIRST RATE GROWTH
 GRASS & WEEDS.
 WEST CORRECTED BETWEEN SECTIONS 12 & 13
2656.83 SET QUARTER SECTION POST & MADE MOUND OF
 EARTH & SOD 4 FEET SQUARE & 2 1/2 FEET HIGH
5313.66 TO SECTION CORNER AT POST
- 1836 ORSON LYON *WEST RANDOM BETWEEN SECTIONS 7 & 18*
5175.72 INTERSECTED RANGE LINE 118.8' SOUTH OF POST
 LAND ROLLING PRAIRIE & FIRST RATE GROWTH
 GRASS ? WEEDS.
 EAST CORRECTED BETWEEN SECTION 7 & 18
2535.72 SET QUARTER SECTION POST MADE MOUND OF
 EARTH & SOD
5175.72 SECTION CORNER WEDNESDAY JUNE 15TH 1836
- 1870 RUGER REMON. FIELD NOTES (OCT) PLACED CUT LIMESTONES
 NORTH ON WEST LINE OF SW QUARTER SEC 7
 ON A VAR 7-22
2658.81 INTERSECTED QUARTER LINE 2.64' EAST OF
 QUARTER COR FOUND OLD STAKE AND
 HARDHEAD STONE ON COR. COR VAR 7-25
 NORTH ON WEST LINE OF NW QUARTER SEC 7
 ON VAR 7-40
2650.56 INTERSECTED NORTH BOUNDARY LINE AT 2.97'
 EAST OF COR. FOUND STUMPS OF BOTH
 BEARING TREES AND STONES ON COR. PLACED
 BY SELF COR VAR 7-44
 NORTH ON WEST LINE OF SW QUARTER SEC 18
 ON A VAR 7-45
2661.78 INTERSECTED QUARTER LINE AT QUARTER COR.
 FOUND OLD STAKE
 NORTH ON WEST LINE OF NW QUARTER SEC 18
 ON A VAR 4-45
2645.61 INTERSECTED NORTH BOUNDARY LINE AT COR.
 FOUND STAKE AND 2 LARGE HH STONES ON
 COR
 EAST ON SOUTH LINE OF SW QUARTER SEC 7
 ON A VAR 4-42
2534.73 INTERSECTED QUARTER LINE AT QUARTER COR
 FOUND OLD STAKE ON COR
 EAST ON SOUTH LINE OF SE QUARTER SEC 7
 ON A VAR 4-18 OFFSET SOUTH 11.22'
2635.71 INTERSECTED EAST BOUNDARY LINE 11.22'.
 SOUTH OF COR. FOUND HARDHEAD STONE
 ON COR. AND OLD STAKE UNDER IT AND NW
 BEARING TREE.

Donald J. Brunes

07/27/2004

SHEET 1 OF 4
CORNER CODE J-25(1/2)

JA553

1878 RUGER VOL 2 PG 254 FD STONE MON.

1888 LEE VOL 2 PG 303 MON VAR 4-30 2660.99 TO N1/4 COR SEC 13.

1891 BLEEDORN VOL 2 PG 455 MON NORTH 1270.5 TO A HH & EASTERLY 1080.58 TO GP ON WEST LINE OF R/R

1960 BATTERMAN VOL 4 PG 80 FD CUT STONE REF. SAME. RE-REF SEE VOL 4 PG 472

1970 BATTERMAN VOL 4 PG 472 SET R/R SPIKE OVER SW COR SEC 7 & REFERENCED SAME.

1978 HURD MAPPING COMPANY VOL 5 PG 517 267,630.673; 2,269,191.410 CITY OF JANESVILLE MAPPING PROJECT.

1984 BARNES J-1 FD R/R SPIKE 0.3' DEEP & FD CUT LIMESTONE 24" DEEP. SET POLY ON TOP OF STONE. FD WESTERLY REFERENCE PIPES & PLACED ADDITIONAL ONES.

1994 BARNES J-1(1) FD POLY MON WITH TOP BROKE OFF. REFERENCED SAME.

1995 WIDOT J-25 286,302.04; 495,875.88 POLY. S88-26-31E 2538.56 TO NE 1/4 COR SEC 18, S1-09-43E 2647.26 TO E 1/4 COR SEC 13, & N89-23-36W 2665.70 TO N 1/4 COR SEC 13

FD R/R 0.1' DEEP. DRILLED HOLE IN CENTER. JULY 23, 2004
ADJUSTMENT COORDINATES ARE: 286,302.07; 495,875.72

C) Was the corner restored through acceptance of (1) an obliterated evidence location, or, (2) a found perpetuated location?

ACCEPTED FOUND PERPETUATED LOCATION.

D) Describe any material discrepancy between the location of the corner as restored or reestablished and the location of that corner as previously restored or reestablished by distance and direction. Show the discrepancy on the plan view drawing under (a), above. Show the distances between the corner as previously restored or reestablished and (1) the corner as restored or reestablished, and (2) to at least 4 of the witness monuments shown on the drawing in (a), above.

NONE

(E) Was the corner reestablished through lost corner proportionate methods? If so, show the method, including the directions and distances to other public land survey corners used as evidence or used for proportioning the corner location.

NO

I, **Donald Barnes**, hereby certify that the corner location as identified by the corner code index was determined by me under my direction and control and that this U.S. Public Land Survey Monument Record is correct and complete to the best of my knowledge and belief.

Seal
Donald Barnes

Emboss

7/27/2004

SHEET 2 OF 4

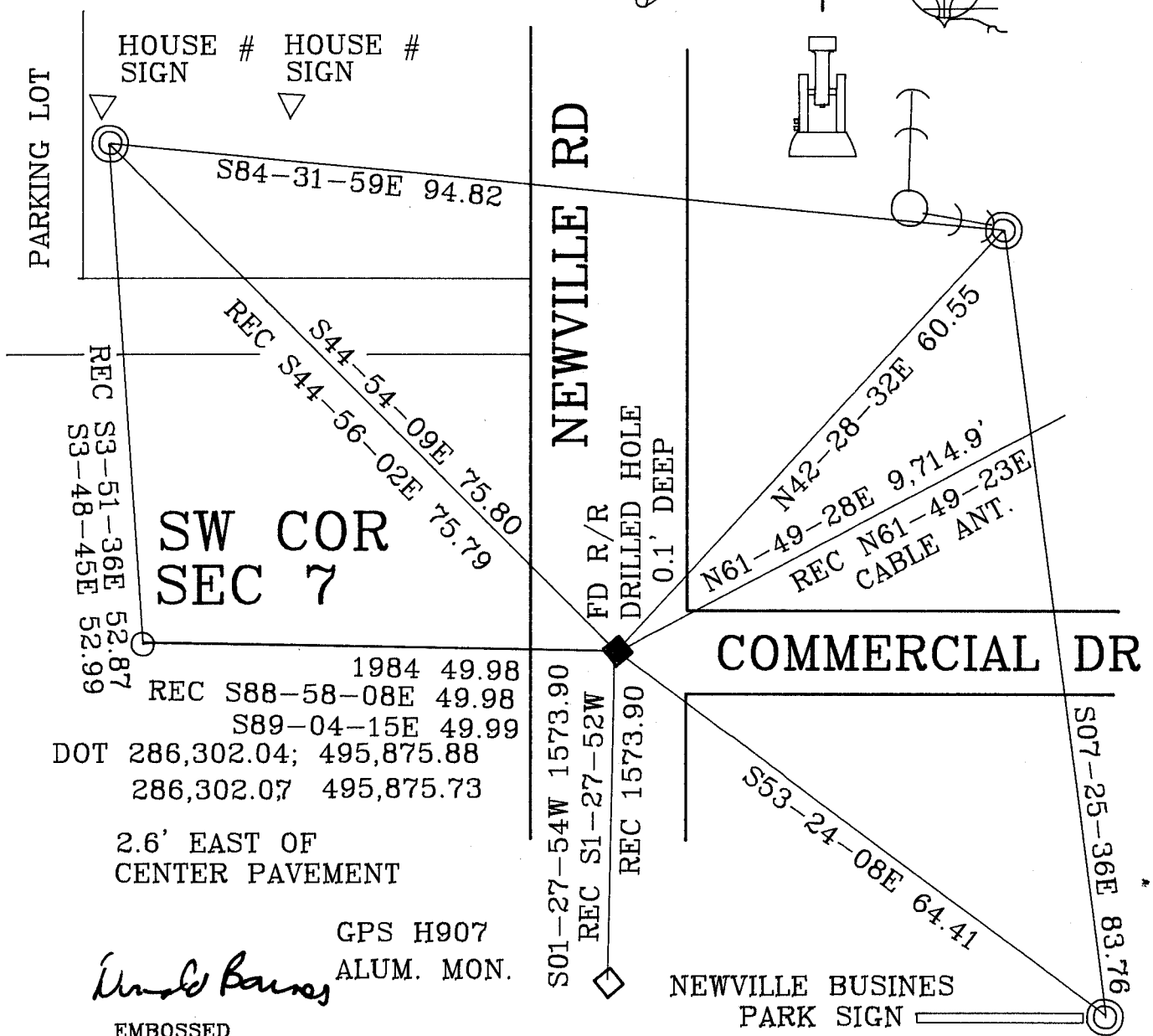
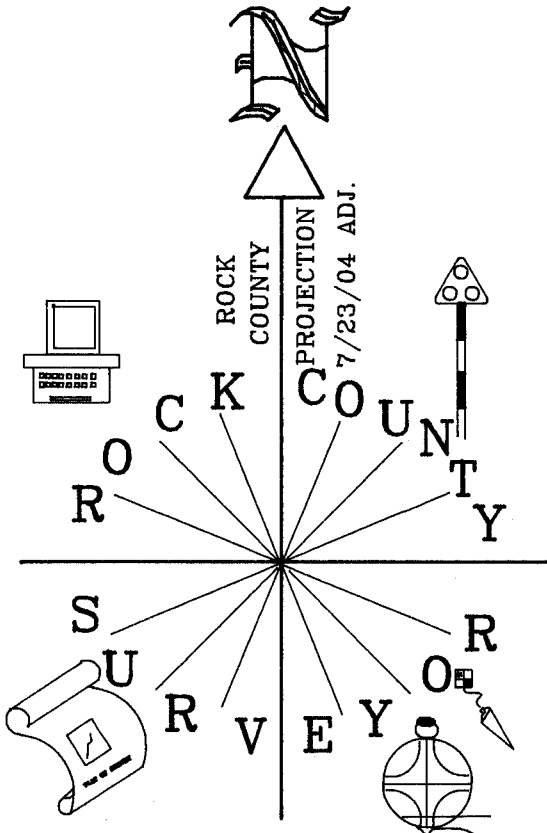
CORNER CODE

J-25(2)

A.E. 7.08 REQUIREMENT

OBSERVATION SHEET

- FD PIPE
- ⊙ 3/4X24 REROD / PLASTIC CAP



David Barnes

EMBOSSSED SEAL

July 27 2004

SHEET 3 OF 4 J-25(1)

SEC 1
JANESVILLE TWP

1988 COMBS CSM13-400 91-38-05
91-38-25

1986 BARNES REMON 88-30-47
1999 COMBS BK32-472 88-30-26
1986 BARNES REMON 88-30-47
1999 COMBS BK32-472 88-30-26

1951 SUNNY 5294.8
N89-10-24E 2647.82
1986 BARNES REMON N89-48-44W 2647.86
1961 BATTERMAN 2648.98
1951 SUNNY 2649.60
1872 LEE VOL 2 PG 93 2651.88

NW COR

1/4 CDR

1984 BARNES E-1 86-34-14
LEE 86-34-06

1984 BARNES REMON 93-12-19
1984 BARNES E-1 179-51-50
OLD DBS 179-51-24

SEC 6
HARMONY TWP

S87-27-35E 2566.74
1984 PROJ S87-23-30E 2566.91
1979 COOPER 2567.38
1977 HURD 2566.57
1870 RUGER VAR 4-16 2562.12

FD POLY &
FD PK

1/4 CDR

1/4 CDR

1997 COMBS CSM20-418 89-48-50
1990 COMBS CSM15-6 89-48-50
1983 COMBS CSM11-340 85-23-00
1990 COMBS CSM14-373 85-23-00
1961 BATTERMAN 89-48-50
1990 COMBS CSM11-370 85-23-00
1983 COMBS CSM11-370 85-23-00
1961 BATTERMAN 89-48-50

1997 COMBS CSM20-418 89-48-50
1990 COMBS CSM15-6 89-48-50
1983 COMBS CSM11-340 85-23-00
1990 COMBS CSM14-373 85-23-00
1961 BATTERMAN 89-48-50
1990 COMBS CSM11-370 85-23-00
1983 COMBS CSM11-370 85-23-00
1961 BATTERMAN 89-48-50

1995 LATHROP #9399 88-07-09
1985 LEE #13700 88-06-20
1951 SUNNY 2656
1982 SCHROEDER 1327.62
INT 1/4 LINE 2654.72
N88-55-30W 5311.00
1951 SUNNY 5312

1/4 CDR

SEC 7

1979 COOPER OLD DBS 86-39-31
1984 BARNES E-1 86-39-14
PK 86-39-04
TIES 86-39-20
1979 COOPER 93-04-50
93-05-37

1835 MULLETT 2640
1870 RUGER VAR 7-44 2650.56
1960 BATTERMAN VOL4-78 2654.30
1961 BATTERMAN #5482 2654.30
1977 HURD 2653.85
1979 COOPER #1574 2653.84
1984 BARNES REMON N00-43-58W 2653.41
1986 BARNES REMON N01-26-22W 2653.36
1990 COMBS CSM15-6 2653.74
1995 LATHROP #9399 2653.84
2001 COMBS CSM25-171 2653.62
2004 RYAN 2653.69
PK N0-48-22W 2653.76
N00-48-22W 2653.82
OLD DBS N00-48-07W 2653.44
2004 RYAN 5314.32
N0-50-49W 5314.49
PK N0-50-49W 5314.43
1988 BARNES TOTAL 5314.35
1984 BARNES TOTAL 5314.32
1979 COOPER 5314.07
1977 HURD 5314.08
1870 RUGER 5309.37

1977 HURD 270,289.95 2,265,120.645
1984 BARNES REMON 270,290.60 2,265,120.32
1979-55-05
OLD DBS 179-54-38
1979 COOPER #1574 179-54-20
1984 BARNES REMON 179-54-21
1988 BARNES REMON 179-54-34

S87-32-48E 5192.50 PK#RUSSELL 179-55-11

1835 MULLETT 2640
1870 RUGER VAR 7-25 2658.81
1977 HURD 2660.23
1979 COOPER #1574 2660.23
1984 BARNES REMON S00-49-37E 2660.91
1986 BARNES S01-31-48E 2660.99
1996 COMBS CSM19-350&374 2660.63
1998 LATHROP CSM21-374 2660.63
1999 LATHROP CSM22-485 2660.63
2000 THOM BK32-476 2660.23
2001 LATHROP CSM VOL 12-140 2660.63
2001 COMBS CSM24-283 2660.63
2003 LATHROP CSM26-140&289 2660.63
OLD DBS S00-53-30W 2661.01
S00-53-16E 2660.67
2004 RYAN 2660.63

1998 LATHROP CSM21-374 93-05-20
1979 COOPER #1574 90-21-40
93-05-32

1/4 CDR

SEC 7
HARMONY TWP

1880 LEE VOL 2 PG 303 2660.99
1961 BATTERMAN 2665.61
1986 BARNES REMON N89-24-02W 2665.36
N88-45-50W 2665.34

FD R/R
SW COR
SEC 7

1870 RUGER REMON 2534.73
1979 COOPER 2539.05
1984 BARNES REMON S87-43-54E 2538.73
S87-48-10E 2538.70

4 OF 4

J-25 (1)

Dund Barnes
7/27/2004