

2541.09 1317.69 1318.43 2673

W STEBBINSVILLE RD

N HY 138

6-16-43
ANDERSON FAMILY TRUST
MARY ANDERSON FARM AND S.H.C. - ETAL.
153.47 A

6-16-42
JUSTAMERE FARM INC
39.46 A

6-16-41
MARY JANE LARSEN LIVING TRUST
53.92 A

6-16-42.1
NATHAN C GALLAGHER
34.85 A

6-16-39
MARK E HOPPE
308.34 A

1
CSM 37-30

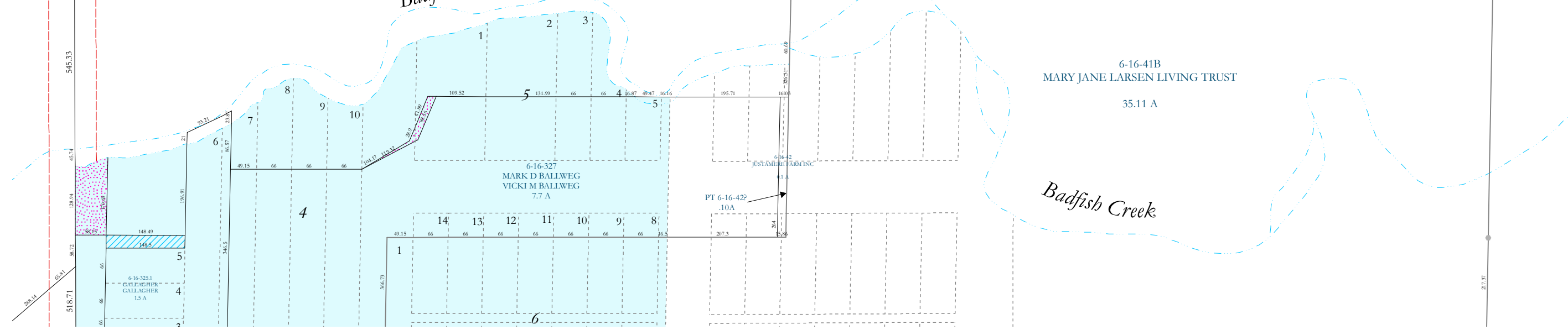
6-16-41B
MARY JANE LARSEN LIVING TRUST
35.11 A

Badfish Creek

Badfish Creek

6-16-32
MARK D BALLWEG
VICKI M BALLWEG
7.7 A

PT 6-16-42
10A



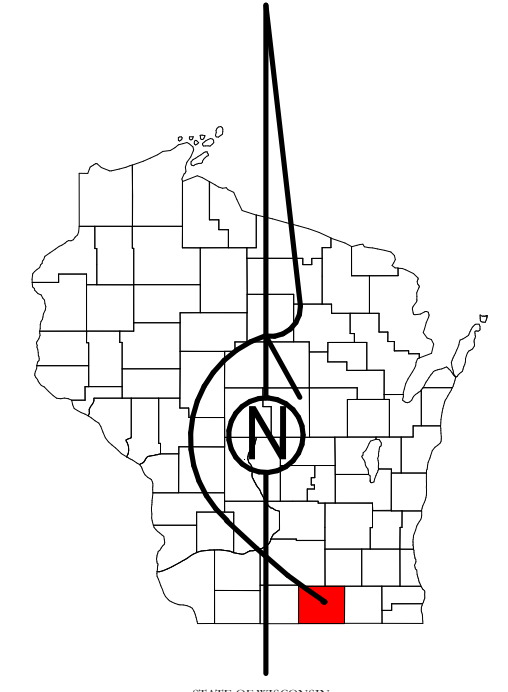
06 SE

Property Division Map

Town
of
Porter

T. 4 N. - R. 11 E.

Section 06 NE



STATE OF WISCONSIN
COUNTY OF ROCK

PREPARED BY

REAL PROPERTY DESCRIPTION
DEPARTMENT

USING

ROCK COUNTY
GEOGRAPHIC INFORMATION SYSTEM

DUPLICATION OF THIS MAP PROHIBITED
WITHOUT THE WRITTEN CONSENT OF THE
REAL PROPERTY DESCRIPTION DEPARTMENT.

THIS MAP WAS PREPARED PURSUANT
TO SECTION 70.09 WIS. STATS.
USING PUBLIC RECORDS. IT IS NOT INTENDED
TO BE A SUBSTITUTE FOR AN
ACTUAL FIELD SURVEY
AND IS ADVISORY ONLY.

DISTANCES SHOWN ON THIS
MAP WERE PRODUCED BY
THE GIS SYSTEM AND ARE
FOR REFERENCE ONLY.
SEE DOCUMENT OF RECORD
FOR ACTUAL DISTANCE.



- Gap
- Overlap
- CSM
- CSMHYDRO
- CSMLOT
- CSMLOTHYDRO
- MFL
- dam
- easement
- hydro
- lots
- parcels
- parcelshydro
- roadrw

See Pages

January 1, 2022

06 NE