

U.S. PUBLIC LAND SURVEY MONUMENT RECORD

For Public Land Survey Corners in:

WI ADMINISTRATIVE CODE A-E 7.08 REQUIREMENT

T. 4 N., R. 12 E

CORNER CODE INDEX

A	1	2	3	4	5	6	7	8	9	10	11	12	13	14	15	16	17	18	19	20	21	22	23	24	25
B																									
C	6																								
D																									
E																									
F																									
G	1																								
H																									
I																									
J																									
K																									
L	18																								
M																									
N																									
O																									
P	19																								
Q																									
R																									
S	30																								
T																									
U																									
V																									
W																									
X	31																								
Y																									
Z																									

FULTON TWP
ROCK COUNTY WI

IF AVAILABLE
ROCK COUNTY COORDINATES PERFERRED

North _____ Elev. _____

East _____

Hor. Datum _____ Vert. Datum _____

LATITUDE _____ ELLIPS. HT. _____

LONGITUDE _____

GPS (X) _____ TRAVERSE (X) _____

BASED ON THE FOLLOWING CONTROL:

PLACE MONUMENT SYMBOL AT PROPER LOCATION ON ABOVE INDEX

CORNER MONUMENT

WITNESS MONUMENT

(a)

BEARINGS ARE BASED ON: _____

OBSERVATION SHEET

FIELD BOOK _____ PAGE # _____

SHEET 1 OF 3

SHOW A PLAN VIEW DRAWING DEPICTING THE CORNER MONUMENT AND SURROUNDING PHYSICAL FEATURES, INCLUDING THE EXCAVATION AREA AND DEPTH.

PLANNING & ZONING COMMITTEE ADOPTED THE ABOVE FORM ON 12/2/1982

CORNER CODE G 17 (2)

FU598

(B) Describe any record evidence, monument evidence, occupational evidence, testimonial evidence or any other material evidence you considered, and whether the monument was found or placed.

- 1900 BROWN VOL 2 PG 515 STAKE SURROUNDED BY 4 IRL. 2684.09' TO CENTER OF SEC 10.
- 1973 LEE VOL 5 PG 43 PD 3 IRL & LIMESTONE. REF. PKS 10'S & 10' W. SET C.I. MON. REFERENCED SAME.
- 1978 SANDSNESS VOL 5 PG 447 DATA PROVIDED BY ARDEN SANDSNESS. SCALE FACTOR 0.99997971 302,355.474 N/S, 2,254,269.512 E/W, ELEV 867.09' NAD29
- 1988 BARNES VOL 6 PG 377 IN VOL 6 PG 3 THE E 1/4 COR OF SEC 10 SHOULD BE THE W 1/4 COR OF SEC 10.
- 1988 BARNES G-17 PD C.I. MON. & REFERENCED IT.
- 1997 THOUSAND G-17(1) I FOUND A IRON MON. DESIGNATED AS A ROCK COUNTY MONUMENT & REFERENCED SAME.

I FOUND A C.I. MONUMET & REFERENCED IT. ESTABLISHED ROCK COUNTY COORDINATES FROM WPL GPS STATIONS.

(C) Was the corner restored through acceptance of (1) an obliterated evidence location, or, (2) a found/perpetuated location?

ACCEPTED FOUND C.I. MONUMENT.

(D) Describe any material discrepancy between the location of the corner as restored or reestablished and the location of that corner as previously restored or reestablished by distance and direction. Show the discrepancy on the plan view drawing under (a), above. Show the distances between the corner as previously restored or reestablished and (1) the corner as restored or reestablished, and (2) to at least 4 of the witness monuments shown on the drawing in (a), above.

(E) Was the corner reestablished through lost corner proportionate methods? If so, show the method, including the directions and distances to other public land survey corners used as evidence or used for proportioning the corner location.

I, Donald Barnes, hereby certify that the corner location as identified by the corner code index was determined by me under my direction and control and that this U.S. Public Land Survey Monument Record is correct and complete to the best of my knowledge and belief.

Seal

Number of included sheets 1

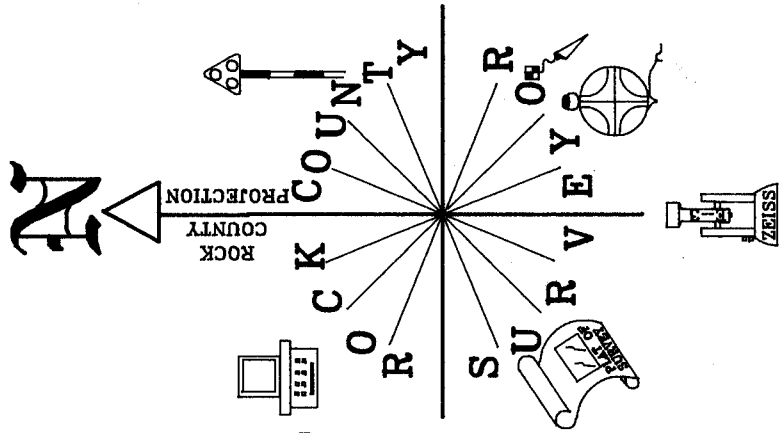
Emboss

Donald Barnes

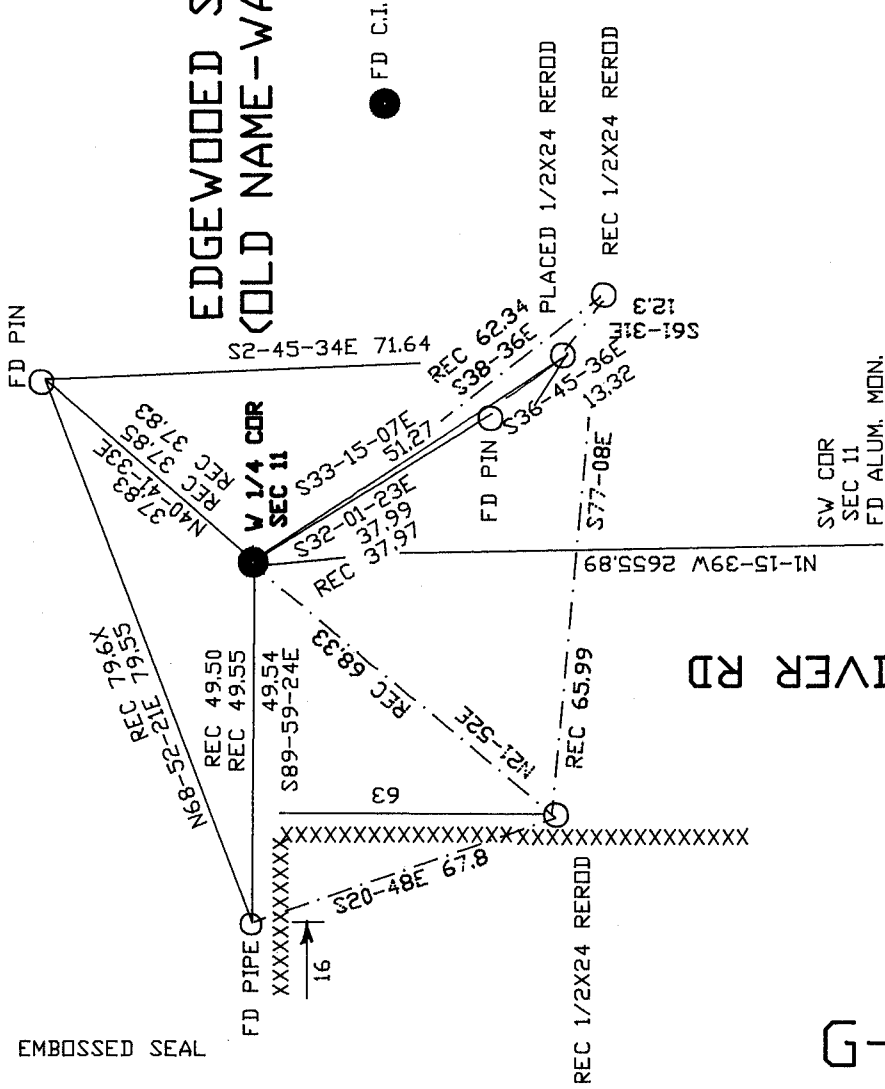
A-E 7.08 REQUIREMENT

11/04/99

CORNER CODE **G-17(2)**



EDGEWOODED SHORES
(OLD NAME-WATTS SPRING RD)



N. ROCK RIVER RD

EMBOSSED SEAL

G-17 (2)

Donald Barnes
11/04/99

321,146.77 N/S
 485,339.06 E/W
 COUNTY SYSTEM
**E 1/4 COR.
 SEC 10**

WATT'S SPRINGS RD

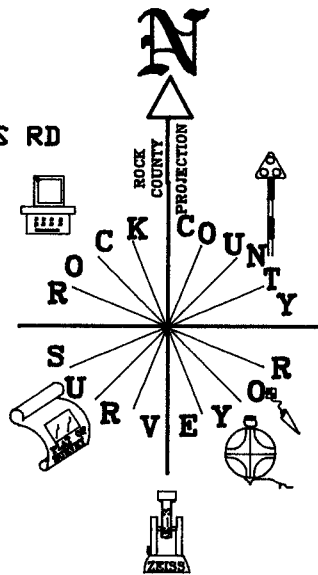
147-33-27 1/2X24 REROD #10

FD PK PAINTED 80
 FD CONCRETE NAIL
 N3-22-56E
 N3-22-56E
 N14-49-02E 60.32
 N14-49-02E 60.32
 N14-49-02E 60.32

181-38-49 #10
 185-01-04 FD PK #80
 196-24-10 FD CONC. NAIL

WPL #61 GPS
 FD T BAR
 319742.09 N/S
 485365.70 E/W
 COUNTY SYSTEM

EDGEWOOD SHORES RD



OBSERVATION SHEETS

DALBY RD

**SE COR
 SEC 10**
 FD ALUM. MON.
 318,491.52 N/S
 485,397.50 E/W
 COUNTY SYSTEM

WPL #60 GPS
 3182123.75 N/S
 485408.01 E/W
 FD T BAR
 COUNTY SYSTEM

359-25-05 WPL 61
 0-46-40 #10

G-17 (2)

Donald Barnes
 11/4/99