

# U.S. PUBLIC LAND SURVEY MONUMENT RECORD

For Public Land Survey Corners In:  
T. 4 N. R. 13 E. 4th P.M.  
CORNER CODE INDEX

WI ADMINISTRATIVE CODE A-E 7.08 REQUIREMENT  
REV 10/23/2004 USMONREC.DWG

MILTON TWP

ROCK COUNTY WI

IF AVAILABLE  
ROCK COUNTY COORDINATES PREFERRED

1	2	3	4	5	6	7	8	9	10	11	12	13	14	15	16	17	18	19	20	21	22	23	24	25	
A																									A
B																									B
C	6																								C
D																									D
E																									E
F																									F
G	7																								G
H																									H
J																									J
K																									K
L	18																								L
M																									M
N																									N
O																									O
P	19																								P
Q																									Q
R																									R
S																									S
T	30																								T
U																									U
V																									V
W																									W
X	31																								X
Y																									Y
Z																									Z

North \_\_\_\_\_ Elev. \_\_\_\_\_

East \_\_\_\_\_

Hor. Datum \_\_\_\_\_ Vert. Datum \_\_\_\_\_

LATITUDE \_\_\_\_\_ ELLIPS. HT. \_\_\_\_\_

LONGITUDE \_\_\_\_\_

NAD83(91) \_\_\_\_\_ NETWORK ADJ. YR \_\_\_\_\_

GPS (X) \_\_\_\_\_ TRAVERSE (X) \_\_\_\_\_

BASED ON THE FOLLOWING CONTROL:

PLACE MONUMENT SYMBOL  AT PROPER LOCATION ON ABOVE INDEX

CORNER MONUMENT

WITNESS MONUMENT

(a)

BEARINGS ARE BASED ON: \_\_\_\_\_

FIELD BOOK \_\_\_\_\_ PAGE # \_\_\_\_\_

SHEET 1 OF 3

SHOW A PLAN VIEW DRAWING DEPICTING THE CORNER MONUMENT AND SURROUNDING PHYSICAL FEATURES, INCLUDING THE EXCAVATION AREA AND DEPTH.

PLANNING & ZONING COMMITTEE ADOPTED THIS FORM ON 12/2/1982

CORNER CODE G-1(2)

FU540^

(B) Describe any record evidence, monument evidence, occupational evidence, testimonial evidence or any other material evidence you considered, and whether the monument was found or placed.

- 1833 OCT MULLETT & BRINK SOUTH ON EAST SIDE SECTION 12  
4N R12  
627 ROCK RIVER 396' @ SW SET POST ON RIGHT BANK  
WHITE OAK 10 N18 1/2W 102.3' BLACK OAK 10 N56E  
129.36' LAND & SAME AS LAST MILE  
OCT 17<sup>TH</sup> 1833
- 1836 JULY BRINK NORTH EAST SIDE SECTION 12 4N 12E  
1358.28 BLACK OAK 18 IN DIAMETER  
2640 SET QUARTER SECTION POST BUR OAK 30 S22W  
87.78' WHITE OAK 7 N37W 60.06'  
3102 ARMY TRAIL @ NE  
3747.48 INTERSECT LEFT BANK OF ROCK RIVER SET POST  
BUR OAK 16 S3W 505.56' BUR OAK 18 S17E 600.6'  
LAND & C SAME RIVER 907.5' WIDE RUNNING  
SOUTH WEST
- 1871 (SEP 11) RUGER MILTON TWP REMON.  
NORTH ON WEST LINE OF SW 1/4 OF SEC 7 ON A  
VAR 6-05 OFFSET WEST 6.60' OFFSET WEST  
6.60' OFFSET EAST 9.90' AT  
2638.35 INTERSECTED 1/4 LINE 3.30' EAST OF 1/4 COR FOUND  
STUB OF SW BEARING TREE ALSO FOUND WHERE  
STUMP OF NW BEARING TREE HAD BEEN DUG UP.  
ESTABLISHED 1/4 COR. FROM THEM. COR VAR 6-13  
NORTH ON WEST LINE OF NW 1/4 OF SEC 7 ON A VAR  
6-05 AT  
1104.84 INTERSECTED MEANDER LINE 9.90' EAST OF COR.  
FOUND STUMPS OF BOTH BEARING TREES &  
ESTABLISHED MEANDER COR. FROM THEM. COR  
VAR 6-35  
AT MEANDER COR. ON NORTH BANK OF ROCK  
RIVER. WEST LINE OF SEC 7 FOUND OLD STAKE AT  
COR. ALSO FOUND NW BEARING TREE & STUMP OF  
NE BEARING TREE. NORTH ON WEST LINE OF NW 1/4  
OF SEC 7 ON A VAR 6-30 OFFSET EAST 10.56' AT  
630.96 INTERSECTED NORTH BOUNDARY LINE 11.88' EAST OF  
COR. FOUND OLD STAKE AT COR. ALSO FOUND  
STUMP OF N.W. BEARING TREE & WHERE STUMP OF  
S.E. BEARING TREE HAD BEEN DUG UP. COR VAR 6-  
37  
HE PLACED 6"X6" CUT LIMESTONE.
- 1911 KERCH VOL 3 PG 65 MON SET GAS PIPE 457.4 TO THE  
EAST, 2641.1 TO SE COR SEC 12, 1106.9 NORTH TO MP  
ON SOUTH SIDE OF ROCK RIVER. ANGLE FROM MP TO SE  
COR SEC 12 180-24, ANGLE FROM GAS PIPE TO SE COR  
SEC 12 90-12
- 1934 DOT #3901 STATES NOTHING ABOUT MON. SHOWS COR  
IS ALSO P.I. AND ANGLE 88-45 FROM THE WEST TO THE  
NORTH
- 1966 DOT #17450, 17451, & 17452 STATED NOTHING ABOUT  
MON. FROM PROPOSED CENTER OF STH 59 IT SHOWS E 1/4  
COR SEC 12 IS 471.3' SOUTH
- 1974 COMBS CSM VOL 4 PG 201 STATES NOTHING ABOUT  
MON.
- 1975 COMBS #1182 STATES NOTHING ABOUT MON. 2641.73  
TO SE COR SEC 12, 1328.45 TO N 1/16<sup>TH</sup> COR OF SE 1/4 OF  
SEC 12, & ANGLE 88-48-18 @ E 1/4 COR SEC 12 FROM SE  
COR SEC 12 TO E/W 1/4 LINE SEC 12.
- 1980 NORTHRUP CSM VOL 9 PG 234 CUT L.S. NORTH 991.89  
TO 1X30 REBAR SET AS WITNESS TO COMPUTED LOCATION  
SET BY RUGER DURING RESUREY OF MILTON TWP.
- 1980 NORTHRUP #1108 FD CUT LIMESTONE MON. NO-06-44W  
652.85 TO PIPE WHICH IS 429 SOUTH OF ROCK RIVER  
BANK

PAGE 1 OF 3

CORNER CODE ~~G-25~~

G-1(2)

Donald Barnes

1-04-07

FU540

- 1980 COMBS #6547 CUT STONE. 2641.73 TO SE COR SEC 12, 1338.48 TO N 1/16<sup>TH</sup> COR OF SE 1/4 OF SEC 12, ANGLE 88-48-25 @ E 1/4 COR SEC 12 FROM SE COR SEC 12 TO E/W 1/4 LINE SEC 12
- 1983 BARNES REMON #6794 SO-17-46W 2642.07 TO SE COR SEC 12
- 1983 BARNES G-1 REFERENCE TIES IN MILTON TWP. FD CUT LS 2.5' ABOVE GROUND. STONE IS SUPPORTED BY METAL SIGN POST. SET CARSONITE.
- 1988 DOT #15032 & 11168 CUT STONE 302,529.19; E/W 2,264,748.01 N2-18-42W 2642.91 TO NE COR SEC 12
- 1990 COMBS CSM VOL 15 PG 68 LIMESTONE. NORTH 991.89 TO MC
- 1995 LATHROP CSM VOL 18 PG 359 CUT STONE 2641.73 TO SE COR SEC 12
- 1996 WEIR G-1 A SQUARE CUT LIMESTONE MON. WAS FOUND AND CHECKED WITH FOUR BOX-TOPPED IRON BOLTS. FOUND USING A PREVIOUS TIE SHEET. THE MON. WAS DETERMINED TO BE THE WEST 1/4 CORNER OF SECTION 7 MILTON.

FD CUT LIMESTONE WITH CARSONITE ON WEST SIDE OF STONE & METAL POST AT SE CORNER OF LS. THE LS IS IN THE BOTTOM OF A STEEP RAVINE WATER WAY. I OCCUPIED BOTH THE CUT LS AND THE REROD THAT IS NO-13-21E 30.58 OF THE STONE. AT THOSE POINTS I MEASURED ANGLES AND DISTANCES TO THE REFERENCE MONUMENTS.

C) Was the corner restored through acceptance of (1) an obliterated evidence location, or, (2) a found perpetuated location?

ACCEPTED CUT LIMESTONE.


D) Describe any material discrepancy between the location of the corner as restored or reestablished and the location of that corner as previously restored or reestablished by distance and direction. Show the discrepancy on the plan view drawing under (a), above. Show the distances between the corner as previously restored or reestablished and (1) the corner as restored or reestablished, and (2) to at least 4 of the witness monuments shown on the drawing in (a), above.

NONE

(E) Was the corner reestablished through lost corner proportionate methods? If so, show the method, including the directions and distances to other public land survey corners used as evidence or used for proportioning the corner location.

NO

I, **Donald Barnes**, hereby certify that the corner location as identified by the corner code index was determined by me under my direction and control and that this U.S. Public Land Survey Monument Record is correct and complete to the best of my knowledge and belief.

Seal  
  
Emboss

SHEET 2 OF 3

1/0A107

CORNER CODE

**G-25** 1-(2)

A.E. 7.08 REQUIREMENT

STH 59

SET 3/4X24  
REROD

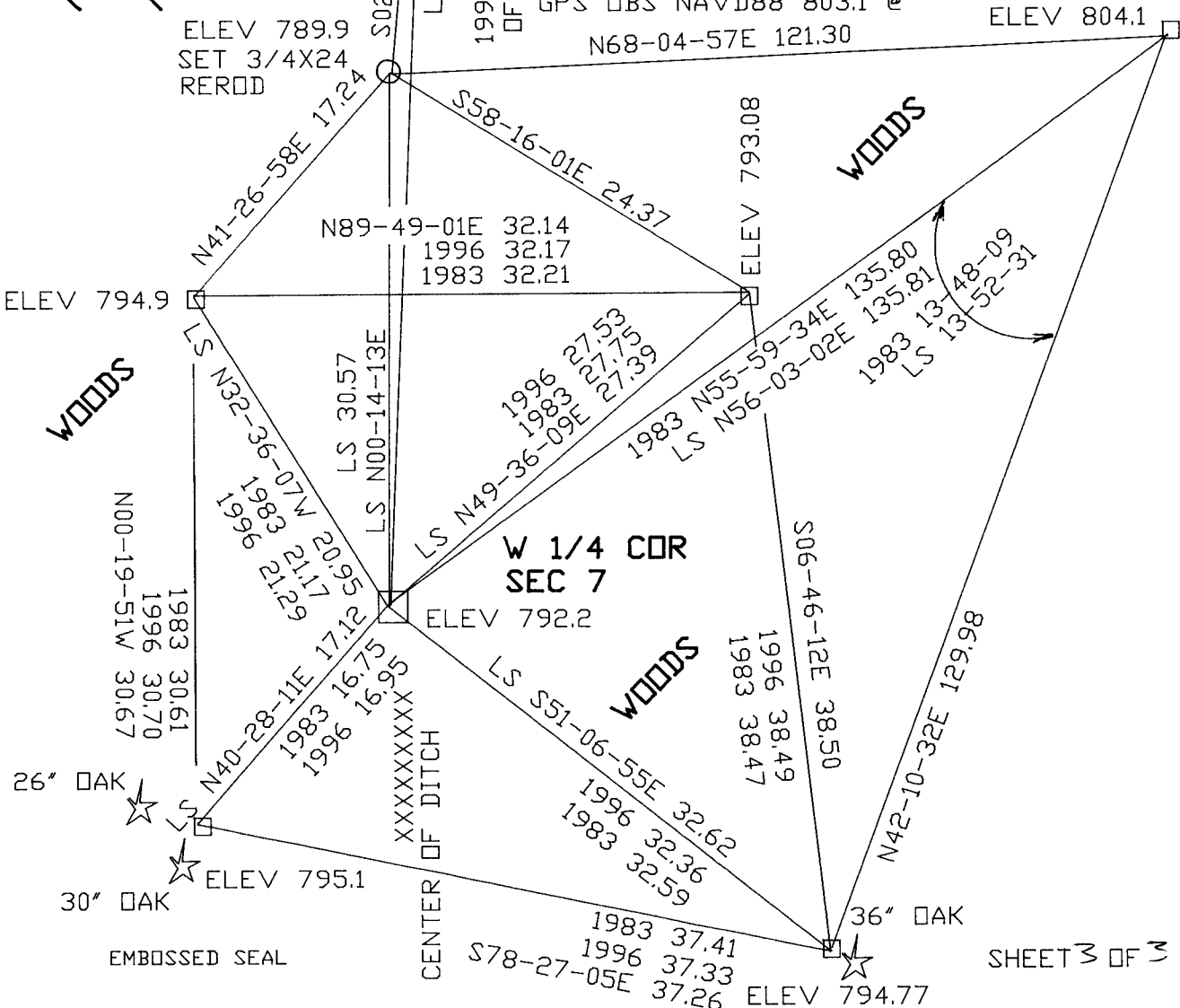
NOT TO SCALE

MILTON TWP  
T4N R13E

FULTON TWP  
T4N R12E

ELEV 786.1 MILTON TWP FB #2 PG 33  
OBSERVATIONS SHEET 976

□ FD BOLT  
□ FD CUT L.S.  
ABOUT 2' ABOVE  
GROUND WITH  
CARSONITE POST.  
ON N/S FENCE LINE  
TRIG LEVELING FROM  
DG4875 GPS STA.  
GPS OBS NAVD88 803.1 @  
N68-04-57E 121.30



*David Barnes*  
1-04-07

G-1(2)

SHEET 3 OF 3