

Paper weight-110# (minimum)

Black nonfading ink required

U.S. PUBLIC LAND SURVEY MONUMENT RECORD

For Public Land Survey Corners In:

WI ADMINISTRATIVE CODE A-E 7.08 REQUIREMENT

T. 4 N. R. 12 E. 4th P.M.

REV 10/23/2004

USMONREC.DWG

CORNER CODE INDEX

A	1	2	3	4	5	6	7	8	9	10	11	12	13	14	15	16	17	18	19	20	21	22	23	24	25	A
B																										B
C																										C
D																										D
E																										E
F																										F
G																										G
H																										H
J																										J
K																										K
L																										L
M																										M
N																										N
O																										O
P																										P
Q																										Q
R																										R
S																										S
T																										T
U																										U
V																										V
W																										W
X																										X
Y																										Y
Z																										Z

FULTON TWP
ROCK COUNTY WI

IF AVAILABLE
ROCK COUNTY COORDINATES PREFERRED

North _____ Elev. _____

East _____

Hor. Datum _____ Vert. Datum _____

LATITUDE _____ ELLIPS. HT. _____

LONGITUDE _____

NAD83(91) _____ NETWORK ADJ. YR _____

GPS (X) _____ TRAVERSE (X) _____

BASED ON THE FOLLOWING CONTROL:

PLACE MONUMENT SYMBOL AT PROPER LOCATION ON ABOVE INDEX

CORNER MONUMENT WITNESS MONUMENT

BEARINGS ARE BASED ON: (a) _____

FU572^

(B) Describe any record evidence, monument evidence, occupational evidence, testimonial evidence or any other material evidence you considered, and whether the monument was found or placed.

1836 (JULY 10) BURNHAM EAST RANDOM BETWN SEC 13 & 24 T4N R12E

5313 INT. RANGE LINE 54.12' SOUTH FIRST RATE W. Y. & BUR OAK OPENINGS

WEST CORRECTED BETWN 24 & 13

BUR OAK 12 IN DIA

2656.5 SET 1/4 SEC POST BUR OAK 10 S3 1/2 E 19.8" ? BUR OAK 8 N37W 19.8" ?

NO STATIONS

5313 TO CORNERS

JULY 10, 1836

1842 PIERCE TWP REC JANESVILLE BK 1 PG 11

NOV 14TH 1842 SURVEYED A RD BEGINNING AT THE RANGE LINE AND AT THE COR OF SEC 24 & THE SOUTHEAST COR OF 13 IN T4N R12E FROM SAID CORNER ON THE SEC. LINE TO THE QUARTER STAKE [IN 1/4 COR SEC 24] S88-15W 2640'; THENCE N45-45W 1254'; THENCE N86-45W 1056'; THENCE N59-45W 759'; THENCE N89-45W 2277'; THENCE S69-15W 1089'; THENCE N82-45W 462'; THENCE N68-15W 1023'; THENCE S86-30W 594'; THENCE S53-15W 1023'; THENCE S30-15W 554.40'; THENCE S53-15W 1023'; THENCE S30-15W 554.40'; THENCE S89-45W 5748.6' ON; THENCE N79-45W 990' ON THE SECTION LINE THENCE; S74-45W 999.9' TO THE PLACE DESCRIBED AS THE PLACE OF BEGINNING FOR THE ABOVE DESCRIBED ROAD MAKING 20,469.9'.

1896 BROWN VOL 2 PG 501 SET HH 17X7X7 BT BL OAK 12" S15E 3 1/2" @ FENCE INT. 2666.4 TO CEN SEC 24.

1975 SCHROEDER VOL 2 PG 501 FD STONE SET 1X24 PIPE OVER SAME.

1974 SCHROEDER CSM VOL 4 PG 193 STATES NOTHING ABOUT MON. 563.70 SOUTH OF CENTER OF MERRIFIELD RD.

1975 NORTHRUP #1202 1 1/2" PIPE FOUND

1989 SCHROEDER #12408 CALLS FOR MON BUT STATES NOTHING ABOUT IT. 2672.10 TO SE COR SEC 13, ANGLE 91-37-40 @ SE COR SEC 13 FROM S 1/4 COR TO E 1/4 COR SEC 13

FD PIPE ON WEST EDGE OF N/S FENCE. PLACED CARSONITE POST 0.8 EAST OF PIPE. PIPE WAS 0.6' ABOVE GRADE. DROVE PIPE ABOUT .15 & IT HIT REFUSAL (STONE OF REC).

C) Was the corner restored through acceptance of (1) an obliterated evidence location, or, (2) a found perpetuated location?

ACCEPTED FD PIPE, WHICH PERPETUATED THE HH.

D) Describe any material discrepancy between the location of the corner as restored or reestablished and the location of that corner as previously restored or reestablished by distance and direction. Show the discrepancy on the plan view drawing under (a), above. Show the distances between the corner as previously restored or reestablished and (1) the corner as restored or reestablished, and (2) to at least 4 of the witness monuments shown on the drawing in (a), above.

I, Donald Barnes, hereby certify that the corner location as identified by the corner code index was determined by me under my direction and control and that this U.S. Public Land Survey Monument Record is correct and complete to the best of my knowledge and belief.

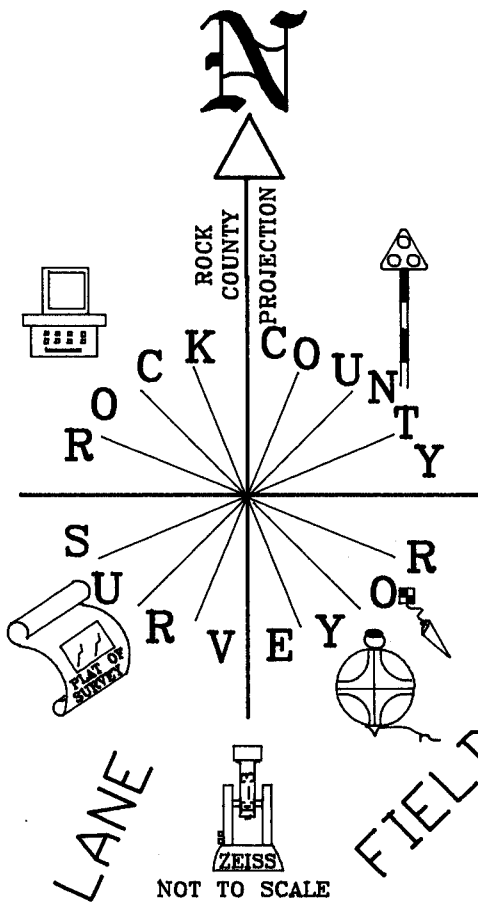
Seal

11/12/07
Emboss
Donald Barnes

SHEET 1 OF 2

CORNER CODE N-23 (1)

A.E. 7.08 REQUIREMENT



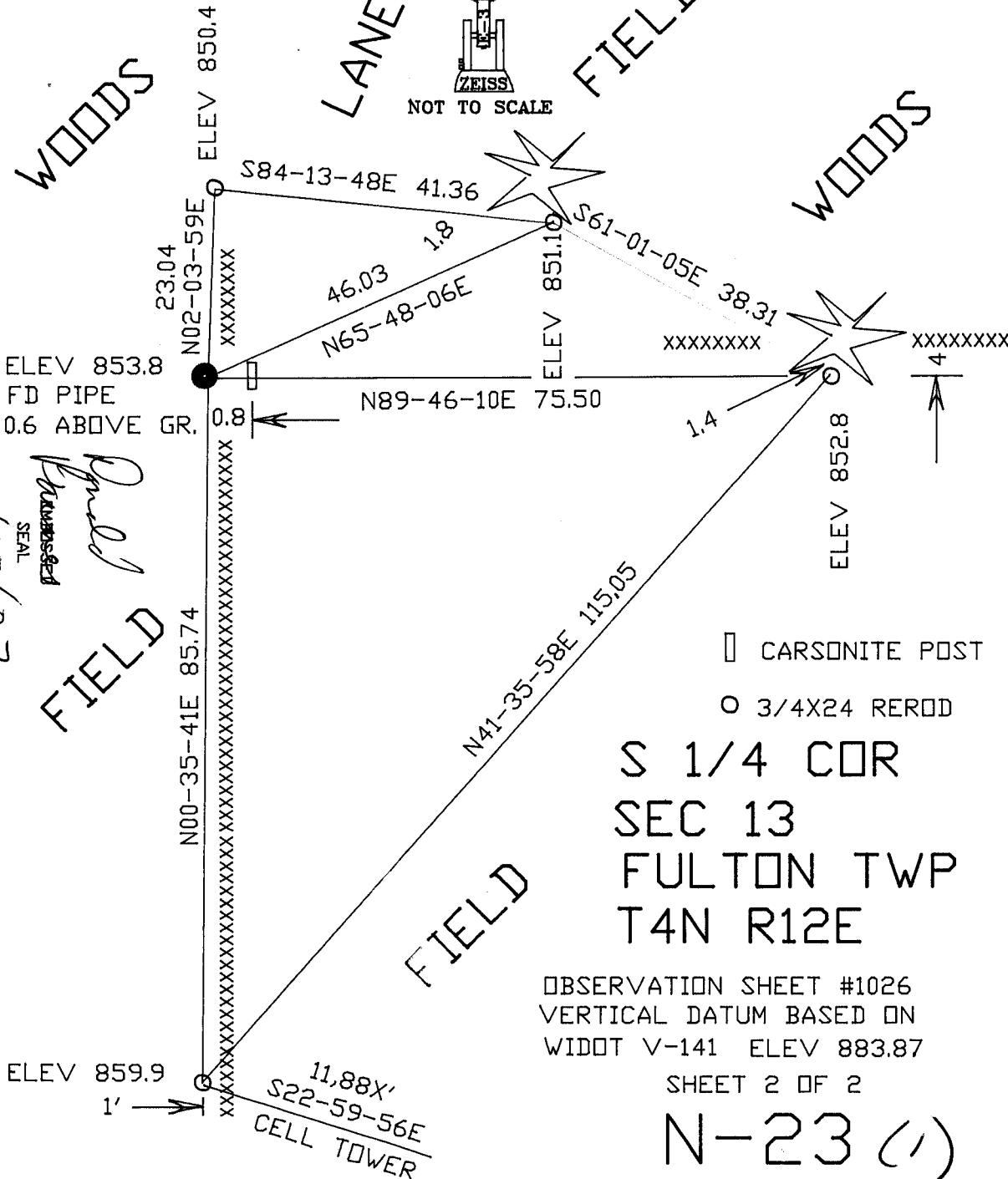
WOODS

FIELD

WOODS

FIELD

FIELD



□ CARSONITE POST
 ○ 3/4X24 REROD

S 1/4 COR
 SEC 13
 FULTON TWP
 T4N R12E

OBSERVATION SHEET #1026
 VERTICAL DATUM BASED ON
 WIDDOT V-141 ELEV 883.87
 SHEET 2 OF 2

N-23 (1)

1/17/07
 [Signature]
 SEAL