

# U.S. PUBLIC LAND SURVEY MONUMENT RECORD

For Public Land Survey Corners in:

WI ADMINISTRATIVE CODE A-E 7.08 REQUIREMENT

T. 3 N., R. 11 E

### CORNER CODE INDEX

A	1	2	3	4	5	6	7	8	9	10	11	12	13	14	15	16	17	18	19	20	21	22	23	24	25
B																									
C	6																								
D		5																							
E																									
F																									
G	1																								
H		8																							
I																									
J																									
K	18																								
L		17																							
M																									
N																									
O																									
P	19																								
Q		20																							
R																									
S	30																								
T		29																							
U																									
V																									
W																									
X	31																								
Y		32																							
Z																									

CENTER \_\_\_\_\_ TWP

ROCK COUNTY WI

IF AVAILABLE  
ROCK COUNTY COORDINATES PREFERRED

North \_\_\_\_\_ Elev. \_\_\_\_\_

East \_\_\_\_\_

Hor. Datum \_\_\_\_\_ Vert. Datum \_\_\_\_\_

LATITUDE \_\_\_\_\_ ELLIPS. HT. \_\_\_\_\_

LONGITUDE \_\_\_\_\_

GPS (X) \_\_\_\_\_ TRAVERSE (X) \_\_\_\_\_

BASED ON THE FOLLOWING CONTROL:

PLACE MONUMENT SYMBOL  AT PROPER LOCATION ON ABOVE INDEX

CORNER MONUMENT

WITNESS MONUMENT

(a)

BEARINGS ARE BASED ON:

OBSERVATION

FIELD BOOK SHEET PAGE # 613

SHEET 1 OF 2

SHOW A PLAN VIEW DRAWING DEPICTING THE CORNER MONUMENT AND SURROUNDING PHYSICAL FEATURES, INCLUDING THE EXCAVATION AREA AND DEPTH.

PLANNING & ZONING COMMITTEE ADOPTED THE ABOVE FORM ON 12/2/1982

CORNER CODE V25

CE613

(B) Describe any record evidence, monument evidence, occupational evidence, testimonial evidence or any other material evidence you considered, and whether the monument was found or placed.

1858 CHURCH VOL 1 PG 82 2663.76 TO S 1/4 COR SEC 25, 2665.74 TO E 1/4 COR SEC 25.

1970 LEE VOL 4 PG 482 SET 1" PIPE NOV 17, 1970 AT SW 30-3-12 & REFERENCED SAME. 1308.21 TO S 1/16TH CORNER OF THE SW 1/4 COR SEC 30. WPL 251,465.19;2,233,826.71

1977 BARNES VOL 5 PG 315 AREA DISTURBED BY THE INSTALLATION OF CULVERTS. SET BY PROJECTING A LINE FROM THE S 1/4 CORNER THROUGH THE SW CORNER OF LOT 1 (CSM VOL 1 PG 348) AND AT RECORD DISTANCE AS RECORDED BY WP&L. REFERENCED SAME. 2476.00' TO S 1/4 COR OF SEC 30 JANESVILLE TWP.

1977 BARNES VOL 5 PG 325 INFORMATION SUPPLIED BY WP&L 2676.29 TO E 1/4 COR SEC 25 CENTER TWP. N/S 251,465.19;2,233,826.71

1977 BARNES VOL 5 PG 346 SET ALUM. MON.

1980 BARNES VOL 6 PG 109	
TO S 1/4 COR SEC 25	2678.8
CHURCH	2663.76
TO S 1/4 COR SEC 30 S89-42-31E	2476.13
RUGER	2471.04
ORIG	2491.50
TO E 1/4 COR SEC 25 N0-31-50W	2676.35
RUGER	2676.29
BARNES 1977	2676.29
CHURCH	2665.74

1988 BARNES VOL 6 PG 389	
TO S 1/4 COR SEC 30 N89-37-39W	2678.04
ORIG	2647.59
BARNES 1979	2678.04
TO E 1/4 COR SEC 36 S1-02-32E	2663.33

FOUND ALUM. MONUMENT 0.6' DEEP.

C) Was the corner restored through acceptance of (1) an obliterated evidence location, or, (2) a found perpetuated location?  
ACCEPTED FOUND PERPETUATED LOCATION.

D) Describe any material discrepancy between the location of the corner as restored or reestablished and the location of that corner as previously restored or reestablished by distance and direction. Show the discrepancy on the plan view drawing under (a), above. Show the distances between the corner as previously restored or reestablished and (1) the corner as restored or reestablished, and (2) to at least 4 of the witness monuments shown on the drawing in (a), above.

(E) Was the corner reestablished through lost corner proportionate methods? If so, show the method, including the directions and distances to other public land survey corners used as evidence or used for proportioning the corner location.

I, Donald Barnes, hereby certify that the corner location as identified by the corner code index was determined by me under by direction and control and that this U.S. Public Land Survey Monument Record is correct and complete to the best of my knowledge and belief.

seal

*Donald Barnes*

Number of included sheets 1

emboss

*4/4/96*

A-E 7.08 REQUIREMENT

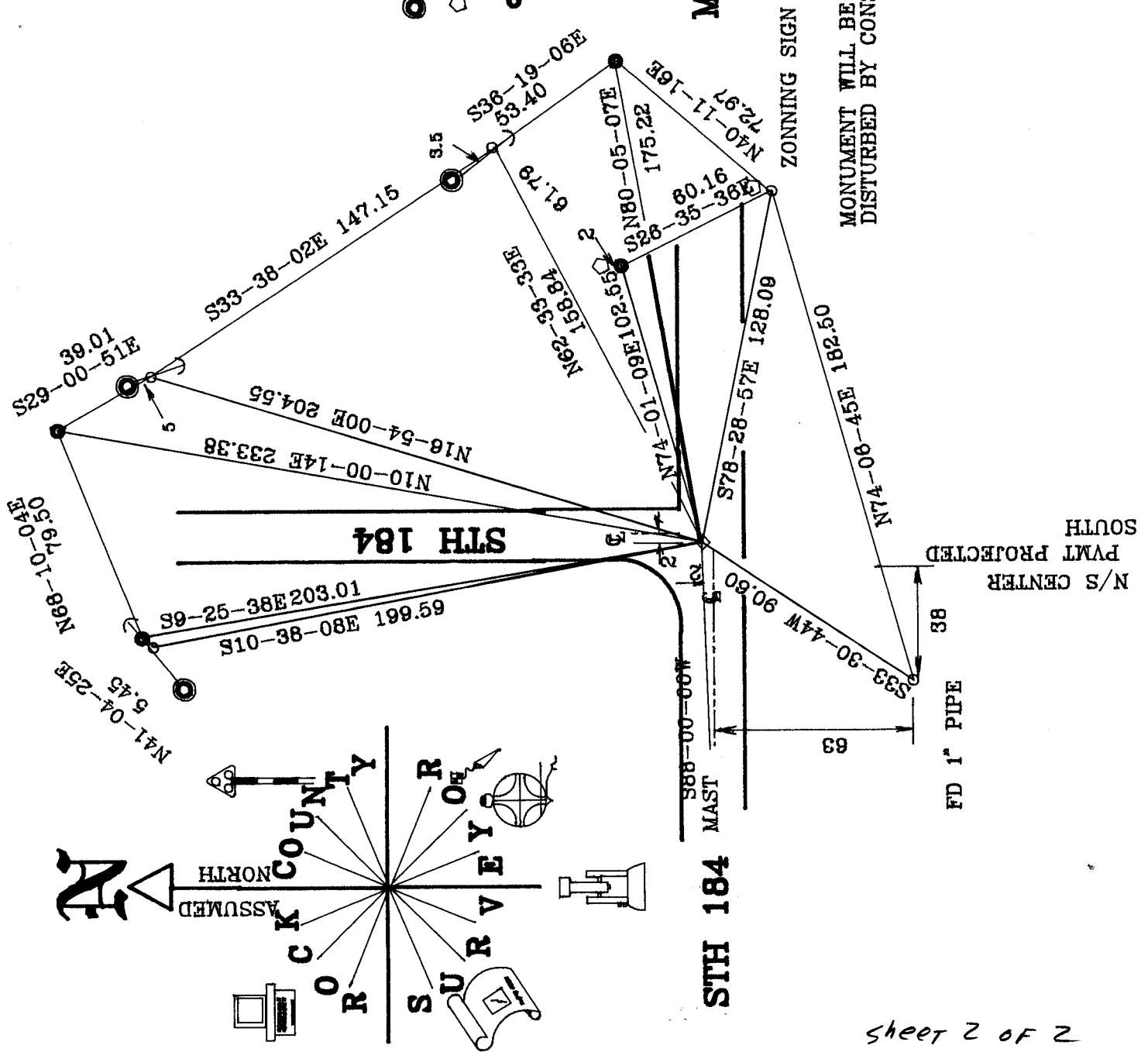
CORNER CODE

*Donald Barnes*  
*4/4/96*

FB#3 PG 4

- UTILITY POLE
- ◻ DOT SURVEY MARKER SIGN
- FD DOT CAP ON REROD

**MINERAL POINT RD**



MONUMENT WILL BE DISTURBED BY CONSTRUCTION

ZONNING SIGN

N/S CENTER  
 PWMT PROJECTED  
 SOUTH

FD 1" PIPE

**STH 184**