

U.S. PUBLIC LAND SURVEY MONUMENT RECORD

For Public Land Survey Corners In:
T. 3 N. R. 14 E. 4th P.M.
CORNER CODE INDEX

WI ADMINISTRATIVE CODE A-E 7.08 REQUIREMENT
REV 10/23/2004 USMONREC.DWG

1	2	3	4	5	6	7	8	9	10	11	12	13	14	15	16	17	18	19	20	21	22	23	24	25	
A																									A
B	6													3											B
C		5												4											C
D														3											D
E														2											E
F														1											F
G	7													10											G
H		8												11											H
J														12											J
K														11											K
L	18													14											L
M		17												15											M
N														14											N
O														13											O
P	19													22											P
Q		20												23											Q
R														24											R
S														23											S
T	30													26											T
U		29												27											U
V														26											V
W														25											W
X	31													35											X
Y		32												34											Y
Z														33											Z
	1	2	3	4	5	6	7	8	9	10	11	12	13	14	15	16	17	18	19	20	21	22	23	24	25

PLACE MONUMENT SYMBOL \blacklozenge AT PROPER LOCATION ON ABOVE INDEX

JOHNSTOWN TWP

ROCK COUNTY WI

IF AVAILABLE
ROCK COUNTY COORDINATES PREFERRED

North 282473.16 Elev. _____

East 543244.24

Hor. Datum _____ Vert. Datum _____

LATITUDE _____ ELLIPS. HT. _____

LONGITUDE _____

NAD83(91) _____ NETWORK ADJ. YR _____

GPS (X) _____ TRAVERSE (X) _____

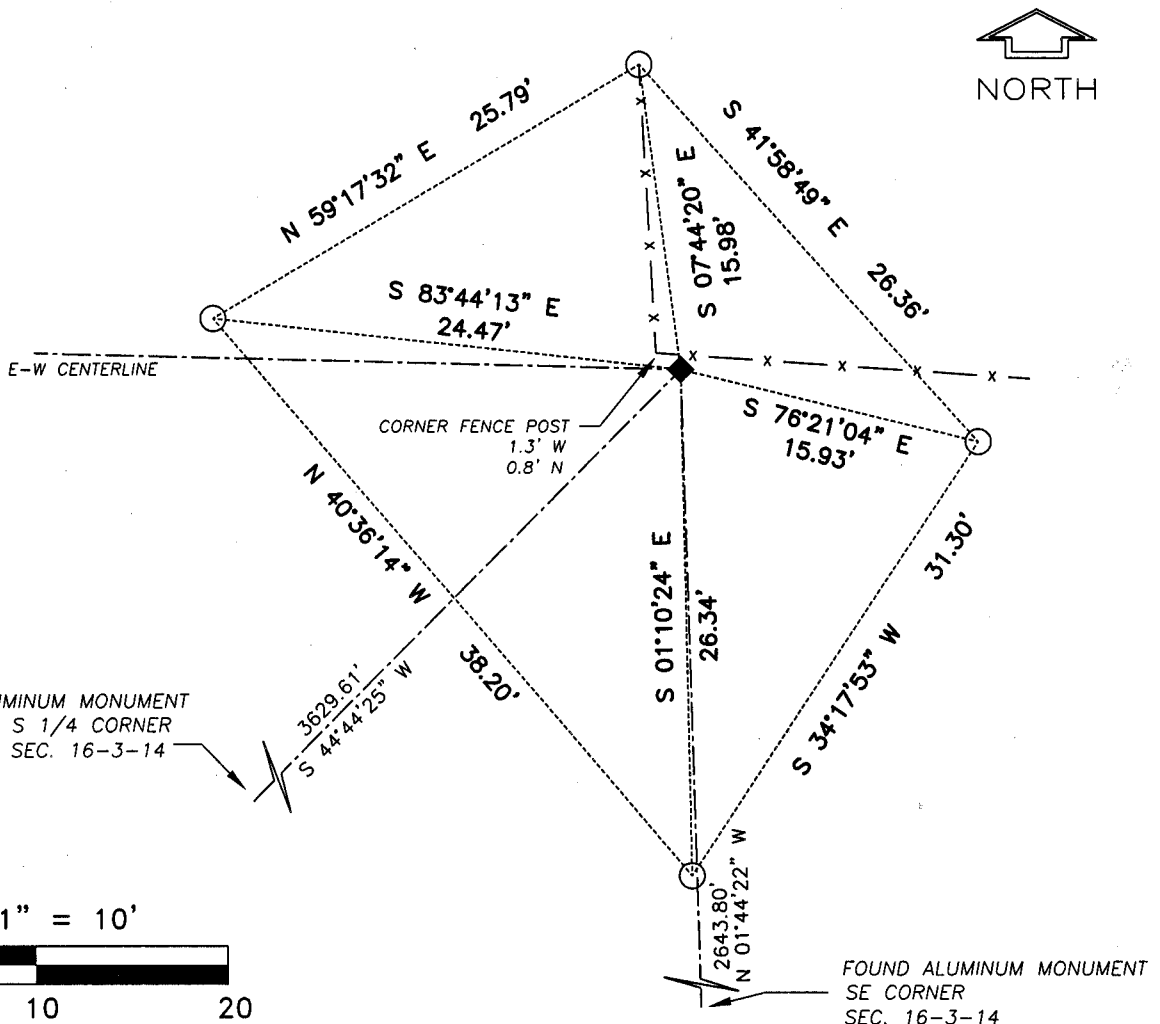
BASED ON THE FOLLOWING CONTROL:

WISCONSIN COUNTY COORDINATE SYSTEM, ROCK

\blacklozenge CORNER MONUMENT \circ WITNESS MONUMENT

\circ IRON REBAR SET 3/4" x 24" (1.5 Lbs./Ft.)
 \blacklozenge CAST IRON MONUMENT FOUND

BEARINGS ARE BASED ON: BEARINGS BASED ON THE WISCONSIN COUNTY COORDINATE SYSTEM, ROCK DATUM



FOUND ALUMINUM MONUMENT
S 1/4 CORNER
SEC. 16-3-14

FOUND ALUMINUM MONUMENT
SE CORNER
SEC. 16-3-14

I, Jeffrey R. Garde, hereby certify that the corner location as identified by the corner code index was determined by me under my direction and control and that this U.S. Public Land Survey Monument Record is correct and complete to the best of my knowledge and belief.

FIELD BOOK _____ PAGE # _____ SHEET _____ OF _____
SHOW A PLAN VIEW DRAWING DEPICTING THE CORNER MONUMENT AND SURROUNDING PHYSICAL FEATURES, INCLUDING THE EXCAVATION AREA AND DEPTH.

PLANNING & ZONING COMMITTEE ADOPTED THIS FORM ON 12/2/1982

CORNER CODE L-13 (1)

(B) Describe any record evidence, monument evidence, occupational evidence, testimonial evidence or any other material evidence you considered, and whether the monument was found or placed.

Found cast iron monument in very close proximity to an old existing fence corner as described by Don Barnes, County Surveyor dated, June 7, 1979, as recorded in Volume 5 on page 555 of Rock County Survey Records.

(C) Was the corner restored through acceptance of (1) an obliterated evidence location, or, (2) a found perpetuated location?

The location of the found cast iron monument was accepted as the corner.

(D) Describe any material discrepancy between the location of the corner as restored or reestablished and the location of that corner as previously restored or reestablished by distance and direction. Show the discrepancy on the plan view drawing under (a), above. Show the distances between the corner as previously restored or reestablished and (1) the corner as restored or reestablished, and (2) to at least 4 of the witness monuments shown on the drawing in (a), above.

No tie sheet of record exists at the time this tie sheet was filed.

(E) Was the corner reestablished through lost corner proportionate methods? If so, show the method, including the directions and distances to other public land survey corners used as evidence or used for proportioning the corner location.

No.

I, Jeffrey R. Garde, hereby certify that the corner location as identified by the corner code index was determined by me under my direction and control and that this U.S. Public Land Survey Monument Record is correct and complete to the best of my knowledge and belief.

Seal



DECEMBER 13, 2010

SHEET 2 OF 2

CORNER CODE

L-13 (1)

A-E 7.08 REQUIREMENT