

U.S. PUBLIC LAND SURVEY MONUMENT RECORD

For Public Land Survey Corners in:

WI ADMINISTRATIVE CODE A-E 7.08 REQUIREMENT

T. 1 N., R. 11 E

CORNER CODE INDEX

A	1	2	3	4	5	6	7	8	9	10	11	12	13	14	15	16	17	18	19	20	21	22	23	24	25
B																									
C	6																								
D																									
E																									
F																									
G	7																								
H																									
J																									
K																									
L	18																								
M																									
N																									
O																									
P	19																								
Q																									
R																									
S																									
T	30																								
U																									
V																									
W																									
X	31																								
Y																									
Z																									

NEWARK TWP

ROCK COUNTY WI

IF AVAILABLE
ROCK COUNTY COORDINATES PREFERRED

North _____ Elev. _____

East _____

Hor. Datum _____ Vert. Datum _____

LATITUDE _____ ELLIPS. HT. _____

LONGITUDE _____

GPS (X) _____ TRAVERSE (X) _____

BASED ON THE FOLLOWING CONTROL:

PLACE MONUMENT SYMBOL AT PROPER LOCATION ON ABOVE INDEX

CORNER MONUMENT

WITNESS MONUMENT

(a)

BEARINGS ARE BASED ON:

FIELD BOOK _____ PAGE # _____

SHEET 1 OF 3

SHOW A PLAN VIEW DRAWING DEPICTING THE CORNER MONUMENT AND SURROUNDING PHYSICAL FEATURES, INCLUDING THE EXCAVATION AREA AND DEPTH.

PLANNING & ZONING COMMITTEE ADOPTED THE ABOVE FORM ON 12/2/1982

CORNER CODE N 21

HE571

(B) Describe any record evidence, monument evidence, occupational evidence, testimonial evidence or any other material evidence you considered, and whether the monument was found or placed.

- 1834 MILLER PG 16 EAST RANDOM BETWEEN SEC 14 & 23
5263.5 INTERSECT SEC LINE 3.96' SOUTH OF POST LAND SAME
WEST CORRECTED BETWEEN SECS 14 & 23
- 174.9 WHITE OAK 15 IN DIA
1339.14 BUR OAK 18
2631.42 SET 1/4 SEC POST BUR OAK 20 IN S19W 35.64'
BUR OAK 20 IN N53E 38.94'
4026 YELLOW OAK 10
5263.5 SEC CORNER
PG 11 NORTH BETWEEN 13 & 14
- 701.58 BUR OAK 14 IN
1492.26 WHITE OAK 15 IN
2640 SET 1/4 SEC POST BUR OAK 12 S17E 42.9'; BUR OAK 10 S10W 54.78'
3503.28 YELLOW OAK 8 IN
5280 SET POST CORNER OF SEC 11, 12, 13, 14
BUR OAK 18 N21W 18.48'; BUR OAK 14 S64E 112.86'
LAND ROLLING 2ND RATE TIMBER OAK & HICKORY OAK & HAZEL
PG 11 EAST RANDOM BETWEEN SECS 13 & 24
- 1650 ENTER MARSH C. S
4382.4 BROOK 6.6' C SOUTH
5214 SEC LINE 54.12' NORTH OF POST. LAND 2ND & 3RD RATE
WEST CORRECTED BETWEEN SECS 13 & 24
- 2607 SET 1/4 SECTION IN MARSH. TOO WET TO MOUND
3910.5 WHITE OAK 14 IN DIA.
5214 SEC COR
PG 10 NORTH BETWEEN 23 & 24
- 1610.4 BUR OAK 6 IN DIA
2640 SET 1/4 SEC POST BUR OAK 10 IN N79W 26.4'; BUR OAK 14 IN N40E 22.44'
4745.4 BUR OAK 12
5280 SET POST COR SECS 13, 14, 23, 24 BUR OAK 16 IN N79E 44.88'; BUR OAK 14
IN S33W 21.12'
LAND GENTLY ROLLING 2ND RATE TIMBER OAK & HICKORY. OAK &
HAZEL UNDERGROWTH
- 1871 COLLINS REMONUMENTATION NOTES
PG 154 EAST BETWEEN 14 & 23 VARIATION 8
- 2608.98 SET 1/4 STONE BY STUMP OF WITNESS TREE
CONTINUED EAST VARIATION 7-30
- 5217.3 SEC CORNER
PG 140 NORTH BETWEEN 13 & 14 VARIATION 5-15
- 2703.36 INTERSECT 1/4 LINE 7.26' WEST OF CORNER SET 1/4 STONE BY
STUMPS OF WITNESS TREES CORRECTED VARIATION 5-25
CONTINUED NORTH VARIATION 5
- 5392.2 SET STONE FOR CORNER OF SECS 11, 12, 13, & 14 IN PLACE OF STAKE
SAID BY H. HUSEMAN TO BE IN PLACE OF ORIGINAL STAKE.
PG 138 EAST BETWEEN 13 & 24 VARIATION 5-55
- 2651.88 SET 1/4 STONE IN LINE WITH FENCE NORTH
CONTINUED EAST SAME VARIATION
- 5303.1 SECTION CORNER
PG 137 NORTH BETWEEN 23 & 24 VARIATION 4-35
- 2694.78 INTERSECT 1/4 LINE 3.3' WEST OF CORNER SET 1/4 STONE BY
STUMPS OF WITNESS TREES CORRECTED VARIATION 4-39
CONTINUED NORTH VARIATION 4-30
- 5384.94 INTERSECT SECTION LINE 7.26' WEST OF CORNER SET STONE FOR
CORNER SECTIONS 13, 14, 23, 25 IN PLACE OF STONE AGREEING WITH
ROOTS OF WITNESS TREES. CORRECTED VARIATION 4-40

- 1863 LOCKE VOL 1 PG 185 VAR 6-45 2641.32 TO S 1/4 COR SEC 13 N 1/4 COR SEC 24 IS ON LINE & MIDWAY BETWEEN THE NE & NW CORNERS OF SEC 24. FD STUMP OF SOUTH BT. SET HH 18X13X9 AND 4 SMALL HARDHEADS ON N,S,E,& W.
- 1863 LOCKE #3194 VAR 6-45 2641.32 TO S 1/4 COR SEC 13
- 1881 LEE VOL 2 PG 329 FD MON. 2697.09 TO E 1/4 COR SEC 14
- 1967 BATTERMAN VOL 4 PG 322 SET MON BOX OVER R.R SPIKE AT FD 6X6 CUT STONE & REFERENCED SAME.
- 1979 LEE CSM 8 PG 349 2648.38 TO S 1/4 COR SEC 13 & 2700.03 TO W 1/4 COR SEC 13
- 1988 LEE #12358 2685.54 TO W 1/4 COR SEC 24
- 1997 LEE CSM 20 PG 204 2685.54 TO W 1/4 COR SEC 24

FOUND R/R SPIKE IN MONUMENT BOX AND ALL 4 REFERENCE MONUMENTS.

C) Was the corner restored through acceptance of (1) an obliterated evidence location, or, (2) a found perpetuated location?

ACCEPTED FOUND R/R IN MON. BOX

D) Describe any material discrepancy between the location of the corner as restored or reestablished and the location of that corner as previously restored or reestablished by distance and direction. Show the discrepancy on the plan view drawing under (a), above. Show the distances between the corner as previously restored or reestablished and (1) the corner as restored or reestablished, and (2) to at least 4 of the witness monuments shown on the drawing in (a), above.

(E) Was the corner reestablished through lost corner proportionate methods? If so, show the method, including the directions and distances to other public land survey corners used as evidence or used for proportioning the corner location.

I, Donald Barnes, hereby certify that the corner location as identified by the corner code index was determined by me under my direction and control and that this U.S. Public Land Survey Monument Record is correct and complete to the best of my knowledge and belief.

seal

Donald Barnes

emboss

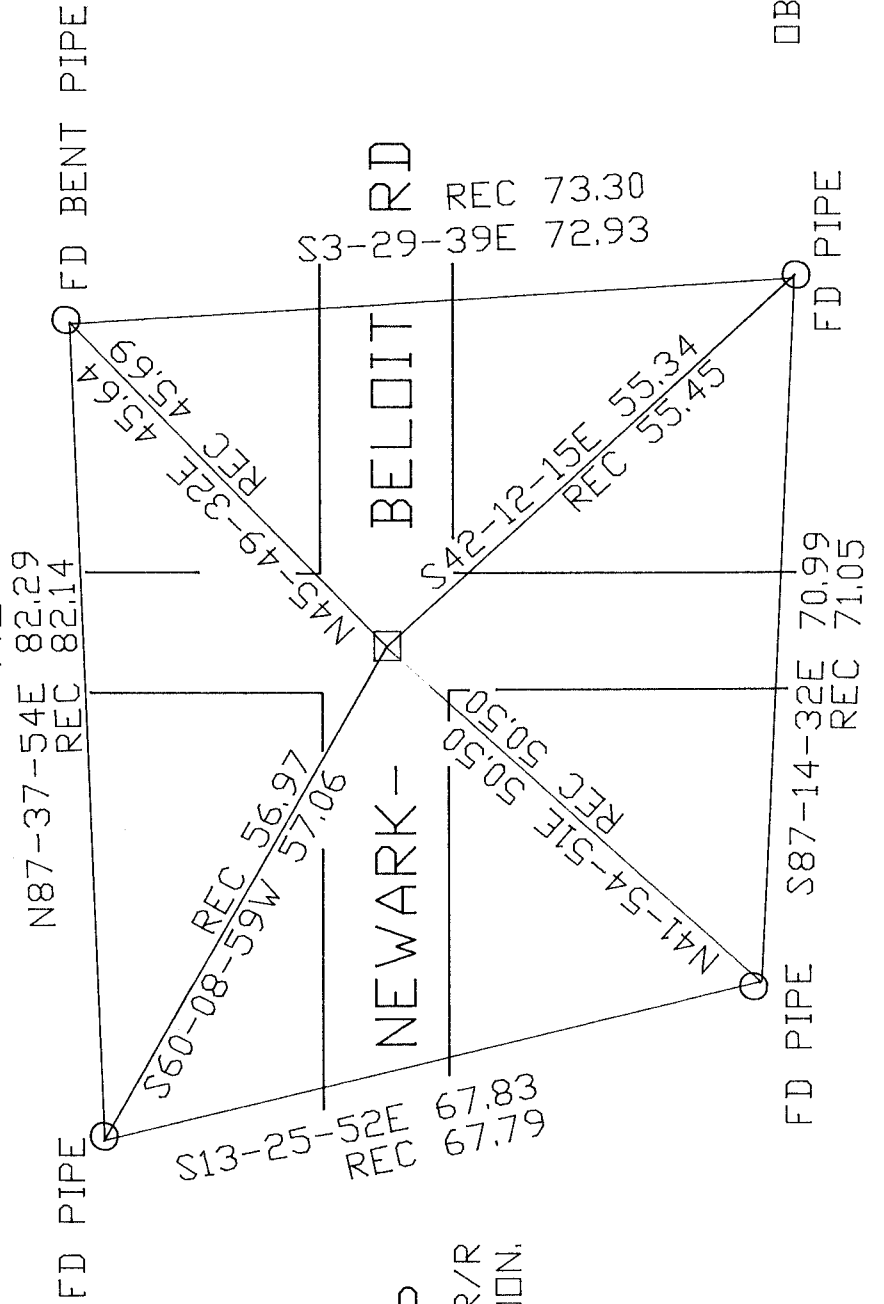
Dec 19, 2000

Number of included sheets **2**

CORNER CODE **N-21**

A-E 7.08 REQUIREMENT

SMYTHE
SCHOOL
RD

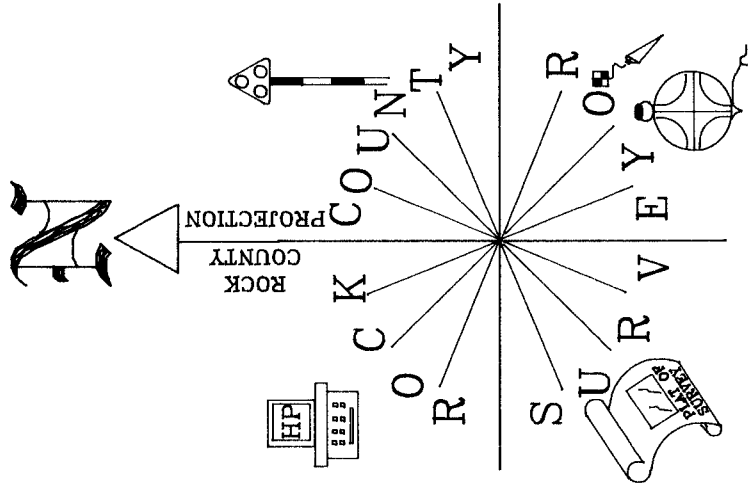


SE COR
SEC 14
NEWARK TWP
FD R/R
IN MON.
BOX

EMBOSSSED
SEAL

Roadbarnes
Dec 19, 2000

N-21



OBSERVATION SHEET # 571