

# U.S. PUBLIC LAND SURVEY MONUMENT RECORD

For Public Land Survey Corners in:

WI ADMINISTRATIVE CODE A-E 7.08 REQUIREMENT

T. 1N., R. 11E

### CORNER CODE INDEX

A	2	3	4	5	6	7	8	9	10	11	12	13	14	15	16	17	18	19	20	21	22	23	24	25
B																								
C	6																							
D																								
E																								
F	7																							
G		8																						
H																								
I																								
J																								
K	18																							
L		17																						
M																								
N																								
O																								
P	19																							
Q		20																						
R																								
S																								
T	30																							
U		29																						
V																								
W																								
X	31																							
Y		32																						
Z																								

NEWARK TWP

ROCK COUNTY WI

IF AVAILABLE  
ROCK COUNTY COORDINATES PREFERRED

North \_\_\_\_\_ Elev. \_\_\_\_\_

East \_\_\_\_\_


Hor. Datum \_\_\_\_\_ Vert. Datum \_\_\_\_\_

LATITUDE \_\_\_\_\_ ELLIPS. HT. \_\_\_\_\_

LONGITUDE \_\_\_\_\_

GPS (X) \_\_\_\_\_ TRAVERSE (X) \_\_\_\_\_

BASED ON THE FOLLOWING CONTROL:

PLACE MONUMENT SYMBOL  AT PROPER LOCATION ON ABOVE INDEX

 CORNER MONUMENT

 WITNESS MONUMENT

(a)

BEARINGS ARE BASED ON:

OBSERVATION SHEET 416

FIELD BOOK \_\_\_\_\_ PAGE # \_\_\_\_\_

SHEET 1 OF 2

SHOW A PLAN VIEW DRAWING DEPICTING THE CORNER MONUMENT AND SURROUNDING PHYSICAL FEATURES, INCLUDING THE EXCAVATION AREA AND DEPTH.

PLANNING & ZONING COMMITTEE ADOPTED THE ABOVE FORM ON 12/2/1982

CORNER CODE E-23

NE532

(B) Describe any record evidence, monument evidence, occupational evidence, testimonial evidence or any other material evidence you considered, and whether the monument was found or placed.

- 1834 MILLER PG 13 EAST RANDOM BETWEEN SEC 1 & 12  
396 ENTER PRAIRIE  
5278.68 INTERSECT RANGE LINE 33' SOUTH POST LAND 2ND RATE. DRY ROLLING PRAIRIE  
WEST CORRECTED BETWEEN SECS 1 & 12  
2639.34 SET 1/4 SEC POST IN MOUND OF EARTH AND SOD  
5278.68 SEC COR. MARCH 8, 1834
- 1871 COLLIN'S REMONUMENTATION NOTES  
PG 145 EAST BETWEEN 1 & 12 VARIATION 6-05  
2656.5 SET 1/4 STONE IN REMAINS OF MOUND.  
CONTINUED EAST VARIATION 5-55  
5313.66 SECTION CORNER
- 1881 LEE VOL 2 PG 330 STATES NOTHING VAR 4-30 2650.89' TO NW COR SEC 12, VAR 5-32 2645.28 TO CENTER OF SEC 12, & VAR 5-32 5283.96' TO S 1/4 COR SEC 12.
- 1981 BARNES VOL 6 PG 132 LAND ON THE NORTH & SOUTH SIDE OF RD INDICATES LARGE ROAD CUTS. DUG 2X4 HOLE & FOUND NOTHING. SET ALUM. MON. COLLIN'S REMONUMENTATION NOTES INDICATES THE CORNER IS NOT ON-LINE WITH THE NE & NW CORNERS. TO ESTABLISH THE E/W POSITION OF THE CORNER, I USED COLLIN'S RECORD DISTANCE FOR PRORATION. TO ESTABLISH THE N/S POSITION I USED LEE'S RECORD DISTANCE FOR PRORATION & MEASURED FROM THE E/W CENTERLINE OF THE SECTION. THIS WAS IN HARMONY WITH OCCUPATION LINE AT THE E 1/16TH CORNER OF THE NW 1/4. SET ALUM. MON. 2653.13 TO NE COR SEC 12, 2652.45 TO NW COR SEC 12, 2647.43 TO INT OF 1/4 LINES OF SEC 12, 5290.63 TO S 1/4 COR SEC 12, ANGLE OF 90-20-46 @ N 1/4 COR SEC 12 FROM NE COR SEC 12 TO S 1/4 COR SEC 12, ANGLE 89-46-37 AT @ N 1/4 COR SEC 12 FROM S 1/4 COR TO NW CORNERS SEC 12, & ANGLE 89-41-03 @ S 1/4 COR SEC 12 FROM SW COR TO N 1/4 COR SEC 12.
- 1984 BARNES VOL 6 PG 314 WIDOT INFORMATION FOR PROJECT 5571-01-21  
FD ALUM. N/S 208,974.03; E/W 2,231,934.47

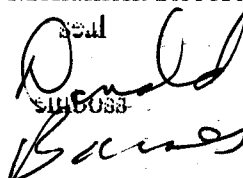
C) Was the corner restored through acceptance of (1) an obliterated evidence location, or, (2) a found perpetuated location?

ACCEPTED FOUND LOCATION. USED THE OLD OBSERVATIONS FROM 1981.

D) Describe any material discrepancy between the location of the corner as restored or reestablished and the location of that corner as previously restored or reestablished by distance and direction. Show the discrepancy on the plan view drawing under (a), above. Show the distances between the corner as previously restored or reestablished and (1) the corner as restored or reestablished, and (2) to at least 4 of the witness monuments shown on the drawing in (a), above.

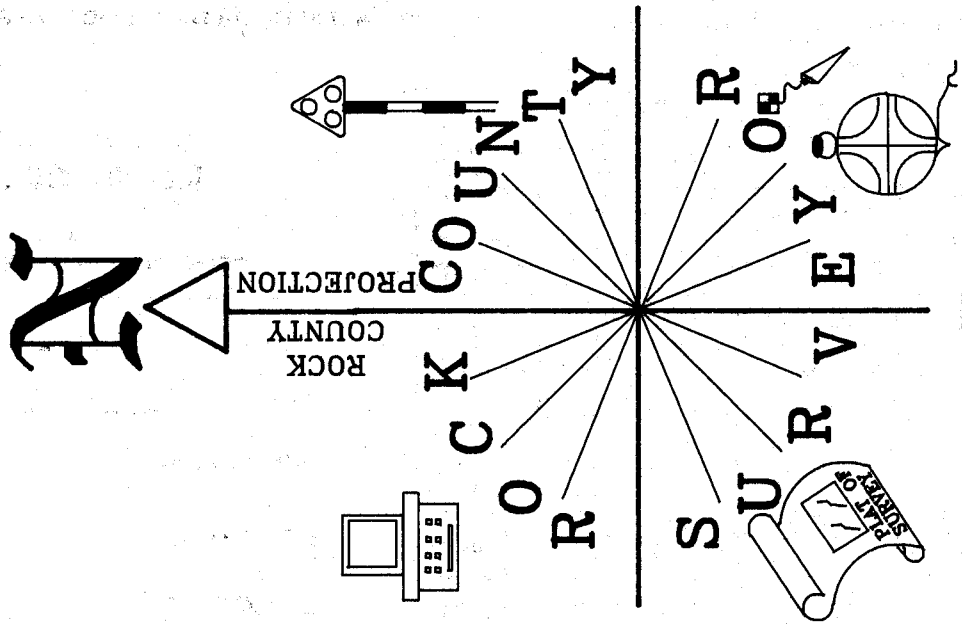
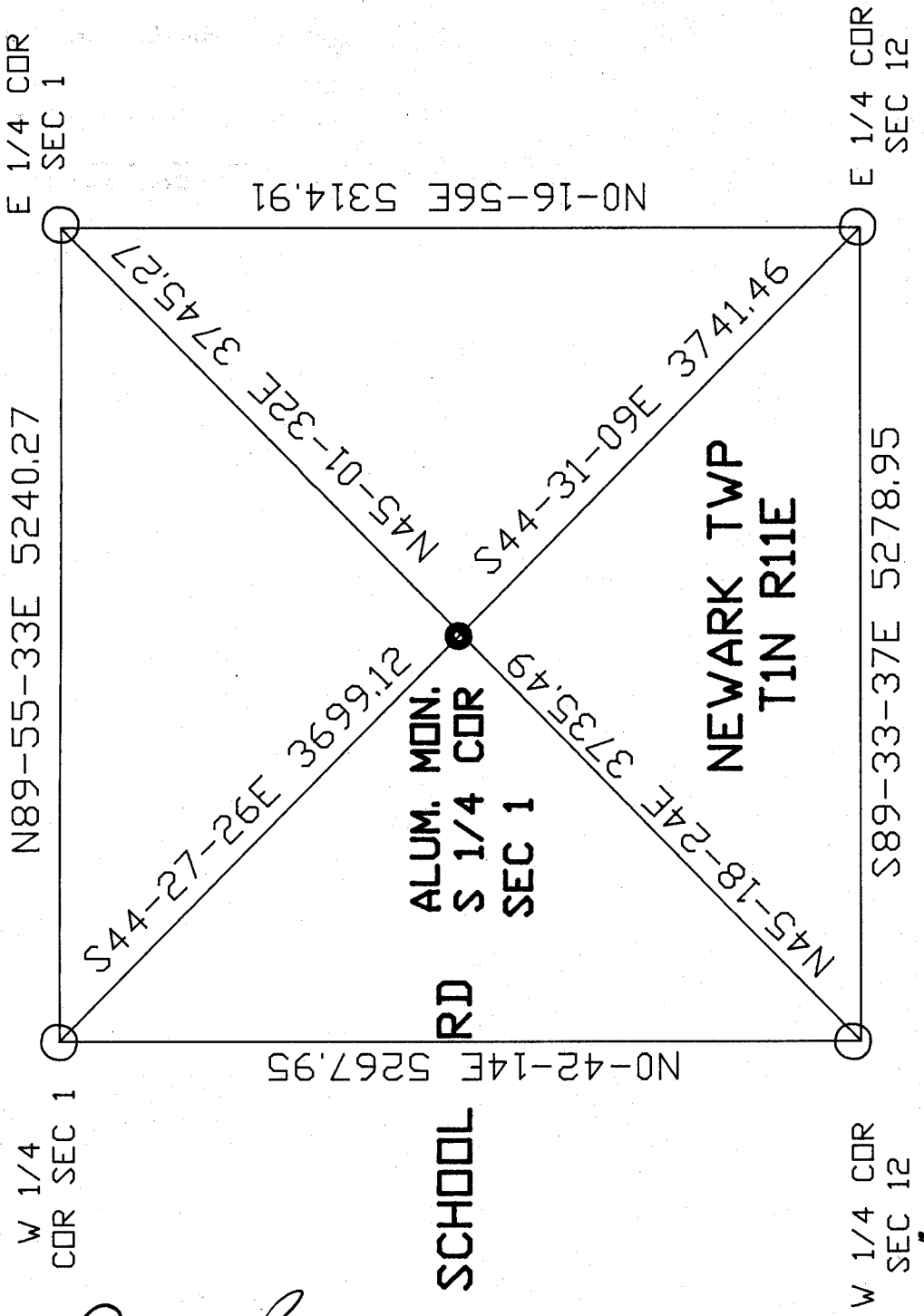
(E) Was the corner reestablished through lost corner proportionate methods? If so, show the method, including the directions and distances to other public land survey corners used as evidence or used for proportioning the corner location.

I, Donald Barnes, hereby certify that the corner location as identified by the corner code index was determined by me under my direction and control and that this U.S. Public Land Survey Monument Record is correct and complete to the best of my knowledge and belief.

  
DONALD BARNES  
7-03-01

sheet 1 of 2

CORNER CODE **E-23**



*Donald Baues*  
 7-5-01  
 EMBOSSED  
 SEAL

GROVE SCHOOL  
 RD

E-23

2 of 2

OBSERVATION SHEET 416

NOT TO SCALE