

U.S. PUBLIC LAND SURVEY MONUMENT RECORD

For Public Land Survey Corners In:

WI ADMINISTRATIVE CODE A-E 7.08 REQUIREMENT

T. 1 N. R. 11 E.

CORNER CODE INDEX

A	1	2	3	4	5	6	7	8	9	10	11	12	13	14	15	16	17	18	19	20	21	22	23	24	25	A
B		6			5				4				3				2			1						B
C																										C
D																										D
E																										E
F																										F
G																										G
H																										H
J																										J
K																										K
L																										L
M																										M
N																										N
O																										O
P																										P
Q																										Q
R																										R
S																										S
T																										T
U																										U
V																										V
W																										W
X																										X
Y																										Y
Z																										Z

NEwARK TWP

ROCK COUNTY WI

IF AVAILABLE
ROCK COUNTY COORDINATES PREFERRED

North _____ Elev. _____

East _____

Hor. Datum _____ Vert. Datum _____

LATITUDE _____ ELLIPS. HT. _____

LONGITUDE _____

GPS (X) _____ TRAVERSE (X) _____

BASED ON THE FOLLOWING CONTROL:

1 2 3 4 5 6 7 8 9 10 11 12 13 14 15 16 17 18 19 20 21 22 23 24 25
PLACE MONUMENT SYMBOL AT PROPER LOCATION ON ABOVE INDEX

CORNER MONUMENT

WITNESS MONUMENT

BEARINGS ARE BASED ON: (a) _____

OBSERVATION SHEET 339

FIELD BOOK _____ PAGE # _____

SHEET 1 OF 3

SHOW A PLAN VIEW DRAWING DEPICTING THE CORNER MONUMENT AND SURROUNDING PHYSICAL FEATURES, INCLUDING THE EXCAVATION AREA AND DEPTH.

PLANNING & ZONING COMMITTEE ADOPTED THE ABOVE FORM ON 12/2/1982

CORNER CODE A-21

NE511

(B) Describe any record evidence, monument evidence, occupational evidence, testimonial evidence or any other material evidence you considered, and whether the monument was found or placed.

- 1833 MULLETT *WEST ON SOUTH SIDE SECTION 36 VAR 7-00*
2640 SET QUARTER SECTION POST WHITE OAK 10 N54E 20.46'; WHITE OAK 14 N15W 69.3;
4059 ENTER MARSH
5016 LEAVE MARSH
5280 SET POST CORNER SECTIONS 34 & 36 BLACK OAK 14 N9E 12.54'; WHITE OAK 8 N64 1/2W 67.98'. LAND EXCEPT MARSH ROLLING SECOND RATE THINLY TIMBERED WITH WHITE BLACK AND BUR OAK SEPT.
WEST ON SOUTH SIDE SECTION 35
1387.32 WHITE OAK 10 IN DIAMETER
2640 SET QUARTER SECTION POST WHITE OAK 18 N69E 14.52'; WHITE OAK 14 N78W 23.76'
5280 SET POST CORNER SECTION 34 & 35 WHITE OAK 20 N62E 33'; WHITE OAK 3 N62W 24.42'
- 1833 HARRISON *NORTH BETWEEN 35 & 36 VAR 8-00E DEC 20th*
462 LEFT TIMBERING ENTER MARSH
990 LEAVE MARSH & ENTER TIMBER
2640 QUARTER SEC COR. BURR OAK 22 N87W 73.26'; BUR OAK 8 S31E 30.36'; BURR OAK 22 & BURR O 8 MARKED.
3630 LEFT TIMBER & ENTER PRAIRIE
4854.96 LEFT PRAIRIE & ENTER TIMBER
4884 BLACK OAK 12
5214 BLACK OAK 12
5280 COR TO SECS 26,25,35,36 RED OAK 24 N69E 25.08'; WHITE OAK 24 N 10W 38.94'; RED OAK 16 S9W 38.28'; RED OAK 14 S46E 75.9'; LAND B? 2ND RATE. TIMBER BURR RED & WHITE OAK DEC 20TH
- 1834 MILLER *NORTH BETWEEN SECS 1 & 2*
1518 BLACK WALNUT 14 IN DIA
2191.2 YEL. OAK 46 IN DIA
2640 SET 1/4 SEC POST BLACK WALNUT 8 N34E 19.8' HICKORY 8 S77W 13.2'
2970 YEL. OAK. 14 IN DIA
4191 BROOK E 1.32' WIDE
4655.64 BUR OAK 12
5377.02 INTERSECTED NORTH BOUNDARY 77.22' EAST OF POST WO 12 S28W 9.24', YEL. 22 S75E 26.4' LAND SOUTH HALF FIRST RATE NORTH HALF 2ND RATE MARCH 8 1834
- 1868 LOCKE PLYMOUTH TWP REMONUMENTATION PG 9
NORTH BETWEEN SEC 35 & 36 VAR 7-10 AUG 19th 1868
2658.48 INTERSECTED 1/4 LINE AT COR. FOUND B.T. IN SEC 35 (CUT DOWN BUT NOT RUINED) AND REMAINS OF STAKE. COR IN CENTER OF HIGHWAY AND 1.98' SOUTH OF FENCE RUNNING WEST. CONTINUED NORTH FROM 1/4 COR WITH VAR 7-15
5318.28 INTERSECTED NORTH BOUNDARY 6.6' WEST OF COR. VAR CORRECTED 7-07
EAST ON SOUTH LINE OF SEC 35 VAR 5-30 PG 15
330 SET OFF 15.18' NORTH
1716 SET OFF 6.27' NORTH
1452 SET OFF 4.29' NORTH
1848 SET OFF 46.86' NORTH
2696.1 INTERSECTED 1/4 LINE 52.8' NORTH OF COR. FOUND STUMP OF EAST BT AND WHERE WEST BT WAS DUG OUT AND OLD STAKE. COR 3 FT WEST OF N & S FENCE VAR CORRECTED 5-56 AUG 20, 1868
CONTINUED EAST FROM 1/4 COR WITH VAR 5-56
5346 INTERSECTED EAST BOUNDARY 3.63' SOUTH OF COR. VAR CORRECTED 5-55 1/4 MONUMENT MARKED WITH FIGURE 35 ON NORTH FACE

STUMPS OF WEST BT AND OLD STAKE. COR IN LINE WITH NORTH AND SOUTH FENCES AND 3 FT NORTH OF FENCE RUNNING EAST ON SOUTH SIDE OF HIGHWAY MONUMENT MARKED WITH FIGURES 36. VAR CORRECTED 6 CONTINUED WEST FROM 1/4 COR WITH VAR 5-10

- 5295.34 INTERSECTED WEST BOUNDARY 5.28' NORTH OF COR. FOUND BT IN SEC 35 AND WHERE BT IN 36 WAS DUG OUT. {SW COR SEC 36}
- 5218.12 INTERSECTED WEST BOUNDARY OF SEC 1 TOWN 1N FOUND BT IN SEC 2 AND OLD STAKE. COR FOR SEC 36 IN CENTER OF N AND S HIGHWAY AND ON SOUTH LINE OF E AND W HIGHWAY. {NW COR SEC 1} VAR CORRECTED 5-17 AUG 19, 1868
- 1871 COLLINS REMONUMENTATION NORTH BETWEEN 1 & 2 VARIATION 4-45 PG 146
- 2640 SET 1/4 STONE BY ROOTS- OF WITNESS TREES. AGREEING WITH LINE TREE NORTH.

CONTINUED NORTH SAME VARIATION

- 4191 BROOK
- 5359.2 SET CORNER FOR 1 & 2 BY WITNESS TREES FROM WHICH STONE AT CORNER OF 35 & 36 T2 R11 IS S80W 77.22'
- EAST ON NORTH LINE SEC 1 ON OFFSET 12.54'
- NORTH VARIATION 5-15 PG 147
- 2584.56 OFFSET 33' SOUTH AND CONTINUED EAST WITH VARIATION 6
- 5216.64 INTERSECT RANGE LINE 19.8' SOUTH OF CORNER
- WEST CORRECTED BACK VAR 5-17
- 2608.32 SET 1/4 36.3' EAST OF PLYMOUTH 1/4 COR
- CONTINUED WEST VARIATION 5-17
- 5216.64 SECTION CORNER OCT 18 1871
- EAST ON NORTH LINE OF 2 VARIATION 6-15
- 5454.24 SEC. CORNER
- BACK TO PG 160
- 2727.12 SET 1/4 STONE 1.98' EAST OF PLYMOUTH CORNER OCT 21 1871
- 1967 SHIMEALL MAP #4442 PIPE OVER STONE @ SW SEC 36 PLYMOUTH TWP & PIN AT NW COR SEC 1 NEWARK TWP. 73.5 BETWEEN PIN & PIPE
- 1984 BARNES VOL 6 PG 314 WIDOT PROJ 5571-01-21 1" PIN 214,292.31; 2,229,338.93
- 1996 COMBS CSM 19-206 FD IRON PIPE OVER STONE AT SW COR SEC 36 (PER CLAYTON SHIMEALL SURVEY DATED 1967) MON. BOX IS 2.9' SOUTH.

FD 3.8" PIN @ NW COR SEC 1, PIPE IN MON. BOX NEAR SW COR SEC 36 & PIPE OVER CUT L.S. AT SW COR SEC 36.

C) Was the corner restored through acceptance of (1) an obliterated evidence location, or, (2) a found perpetuated location?

ACCEPTED FOUND MONUMENT. IN HARMONY WITH RECORD JOG DISTANCE & ON LINE WITH N 1/4 COR & SW COR SEC 36 PLYMOUTH TWP.

D) Describe any material discrepancy between the location of the corner as restored or reestablished and the location of that corner as previously restored or reestablished by distance and direction. Show the discrepancy on the plan view drawing under (a), above. Show the distances between the corner as previously restored or reestablished and (1) the corner as restored or reestablished, and (2) to at least 4 of the witness monuments shown on the drawing in (a), above.

THE PIPE IN THE MON BOX AT THE SW COR SEC 36 PLYMOUTH TWP IS NOT THE ONE SHIMEALL PLACED.

I, Donald Barnes, hereby certify that the corner location as identified by the corner code index was determined by me under my direction and control and that this U.S. Public Land Survey Monument Record is correct and complete to the best of my knowledge and belief.

seal

Sheet 2 of 3

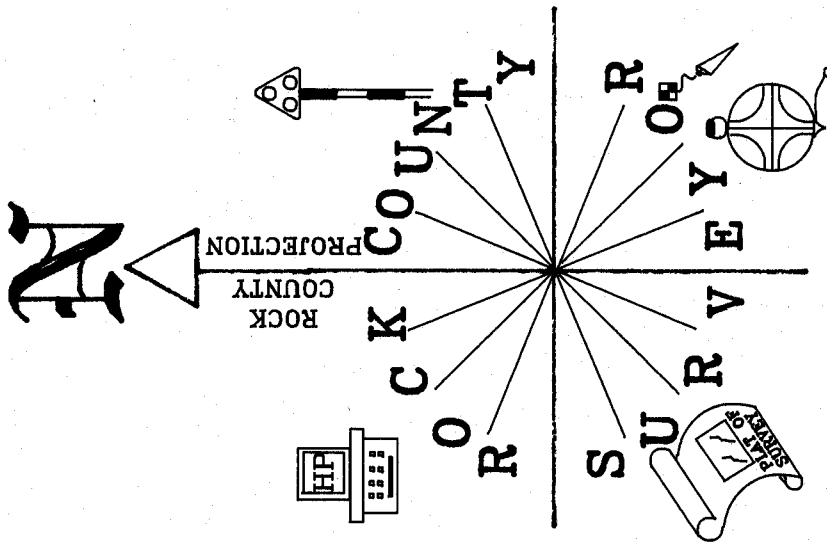
emboss

Donald Barnes

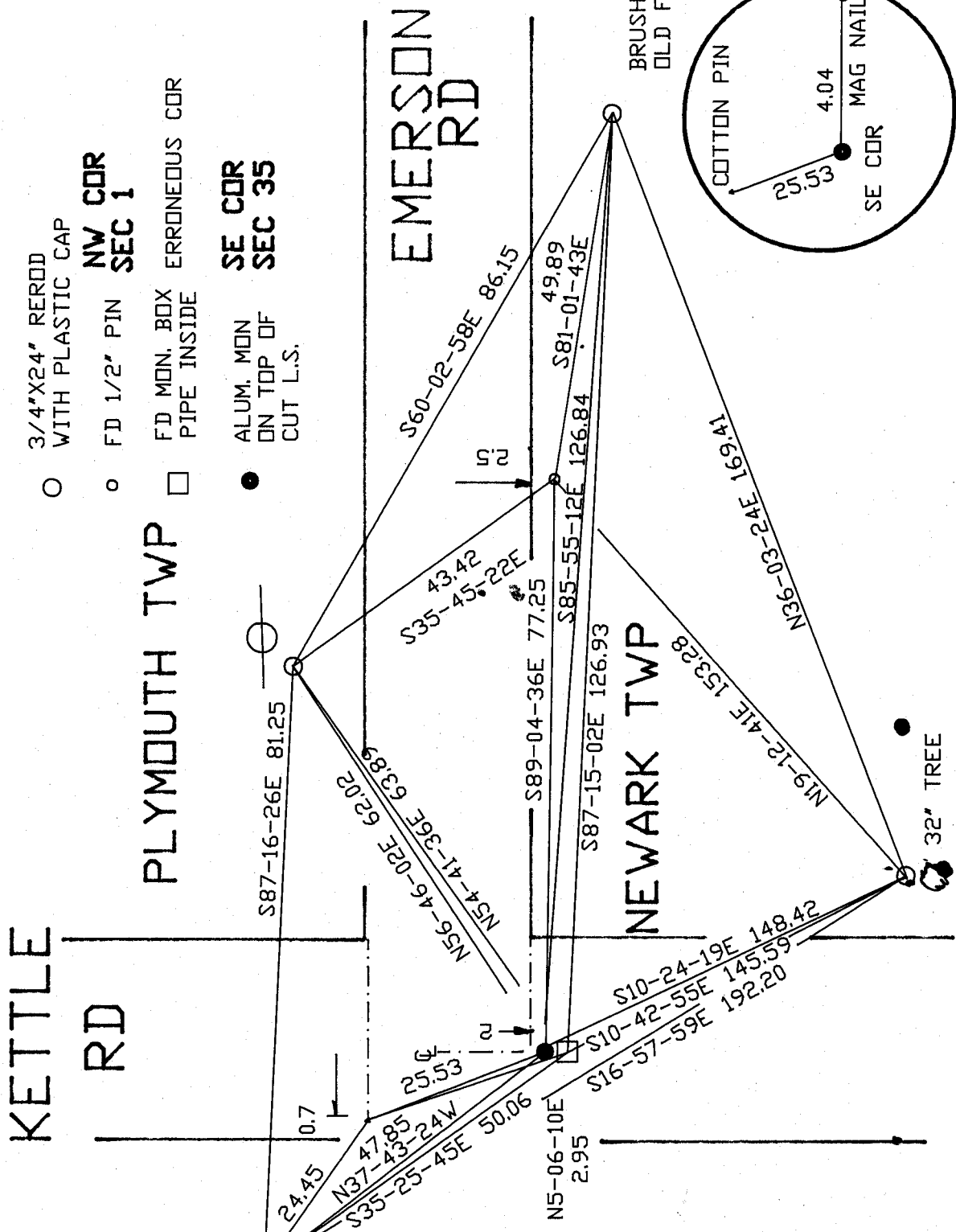
8-18-01

CORNER CODE A-21

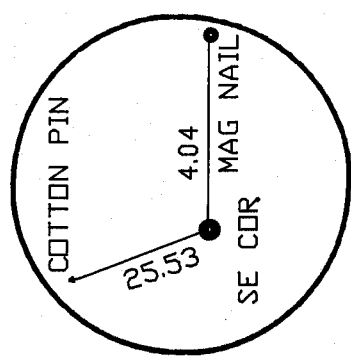
A-E 7.08 REQUIREMENT



OBSERVATION SHEET #339



- 3/4"X24" REROD WITH PLASTIC CAP
- NW COR SEC 1
- FD 1/2" PIN
- FD MON. BOX PIPE INSIDE
- SE COR SEC 35
- ALUM. MON ON TOP OF CUT L.S.



KETTLE RD

PLYMOUTH TWP

EMERSON RD

NEWARK TWP

BRUSH & OLD FENCE ROW

32' TREE

Donald Barnes
8-18-01

EMBOSSED SEAL

A-21