

U.S. PUBLIC LAND SURVEY MONUMENT RECORD

For Public Land Survey Corners in:

WI ADMINISTRATIVE CODE A-E 7.08 REQUIREMENT

T. 1 N., R. 11 E

CORNER CODE INDEX

A	1	2	3	4	5	6	7	8	9	10	11	12	13	14	15	16	17	18	19	20	21	22	23	24	25
B	6																								
C		5																							
D			4																						
E				3																					
F					2																				
G						1																			
H	1	8	9	10	11	12																			
I																									
J																									
K	18	17	16	15	14	13																			
L																									
M																									
N																									
O																									
P	19	20	21	22	23	24																			
Q																									
R																									
S																									
T	30	29	28	27	26	25																			
U																									
V																									
W																									
X	31	32	33	34	35	36																			
Y																									
Z																									

NEWARK TWP
ROCK COUNTY WI

IF AVAILABLE
ROCK COUNTY COORDINATES PREFERRED

North _____ Elev. _____

East _____

Hor. Datum _____ Vert. Datum _____

LATITUDE _____ ELLIPS. HT. _____

LONGITUDE _____

GPS (X) _____ TRAVERSE (X) _____

BASED ON THE FOLLOWING CONTROL:

PLACE MONUMENT SYMBOL AT PROPER LOCATION ON ABOVE INDEX

CORNER MONUMENT

WITNESS MONUMENT

(a)

BEARINGS ARE BASED ON:

FIELD BOOK _____ PAGE # _____

SHEET 1 OF 3

SHOW A PLAN VIEW DRAWING DEPICTING THE CORNER MONUMENT AND SURROUNDING PHYSICAL FEATURES, INCLUDING THE EXCAVATION AREA AND DEPTH.

PLANNING & ZONING COMMITTEE ADOPTED THE ABOVE FORM ON 12/2/1982

CORNER CODE 2-21

NE631

(B) Describe any record evidence, monument evidence, occupational evidence, testimonial evidence or any other material evidence you considered, and whether the monument was found or placed.

- 1832 LYONS PG 3 EAST ALONG THE SOUTH SIDE OF SEC 35 VAR 6-50E
2640 TO 1/4 SEC CORNER WHICH IS NOT ESTABLISHED ON ACCOUNT OF HIGH WATER WHICH COVERS THE GROUND FOR CONSIDERABLE DISTANCE. A BRISK RUNNING STREAM ABOUT 23.1' WIDE RUNS SOUTH BUT A SHORT DISTANCE WEST OF THE 1/4 SEC CORNER (ON WHERE CORNER SHOULD BE)
5280 SET POST FOR CORNER TO SECS 35 & 36 BUR OAK 14 N20E 104.94'; NO OTHER BEARING TREE
PG 1 (BELOIT) EAST ALONG THE SOUTH SIDE OF SEC 36 T1N R11E VAR 6-50E.
2640 PASSING THROUGH A DEEP PLASH AND SOME SCATTERING BUR OAK TREES, SET POST FOR 1/4 SECTION CORNER. BUR OAK 16 S68E 139.92', NO OTHER BEARING.
5280 SET A POST IN PLASHY GROUND, AS BEFORE, FOR CORNER TO SEC 36 OF R11 & SEC 31 OF R12E OF THE 4TH PRINCIPAL MERIDIAN BUR OAK 21 WEST 2049.96' CHS, NO OTHER BEARING. THE ABOVE BEARING TREE STANDS ALL ALONE. LAND, FLAT, WET, 3RD RATE PRAIRIE.
- 1834 MILLER PG 8 NORTH BETWEEN SECS 35 & 36
924 LEAVE ISLAND. TIMBER ENTER MARSH S.E.
2310 LEAVE MARSH
2640 SET 1/4 SEC POST BUR OAK 18 S83E 31.02'; BUR OAK 10 S84W 60.72'
3227.4 WHITE OAK 14 IN DIA
5280 COR OF SEC 25,26,35,36 SET POST BUR OAK 12 N68E 13.2' BUR OAK 24 S15W 23.76'. LAND LEVEL 2ND RATE TIMBER ON NORTH HALF OAK AND HICKORY OAK & HAZEL UNDERGROWTH
- 1836 SPAULDING ILL ORIG SURVEYOR (JANUARY)
PG 94
NORTH BETWEEN SECTIONS 5 & 6 TOWNSHIP 46 NORTH RANGE ONE EAST OF THE 3RD PRINCIPAL MERIDIAN.
2085.6 TO BUR OAK 15 INCHES DIAMETER
2640 SET A POST FOR QUARTER SECTION CORNER FROM WHICH A BUR OAK 15 INCHES DIAMETER BEARS S82-30E 144.54' AND A FORKED BUR OAK 15 INCHES DIAMETER BEARS N49-15E 99.0' DISTANT. LAND ROLLING A STRIP OF FLAT WET BETWEEN THE RIDGES. ABOUT ONE HALF TOO WET FOR CULTIVATION. TIMBER OAK ON THE RIDGES. NO UNDERGROWTH.
4862.88 INTERSECTED THE NORTH BOUNDARY OF ILLINOIS AND BASE LINE OF THE NORTH WEST TERRITORY. 2032.8' WEST OF THE CORNER TO SECTIONS 35 & 36 TOWNSHIP ONE NORTH RANGE 11 EAST OF THE 4TH PRINCIPAL MERIDIAN AND AT SAID INTERSECTION SET A POST FOR CORNER TO SECTIONS 5 & 6 FROM WHICH A BLACK OAK 24 INCHES DIAMETER A LONE TREE BEARS N25W 172.26' TREE MARKED BT. NO OTHER TREE NEAR. LAND LEVEL WET PRAIRIE NOT FIT FOR CULTIVATION. THE POST - 8 INCHES DIAMETER
- 1852 McVEAN VOL 1 PG 12 5273.4' TO SE COR SEC 36.
1871 COLLINS REMONUMENTATION NOTES
PG 148 WEST ON SOUTH LINE OF 35 VARIATION 6
660 CREEK
726 SAME
818.4 SAME
2681.58 SET 1/4 STONE.
CONTINUED WEST SAME VARIATION
5361.18 SET STONE FOR CORNER OF 34 & 35 IN PLACE OF OLD STAKE AGREEING WITH WITNESS TREE. NOTED S53W BUT IS N53W WITH PLAIN MARK.

Donald Barnes
6.29.01

PG 132 WEST ON SOUTH LINE SEC 36 VAR 6-30

2646.6 INTERSECTED 1/4 LINE 11.88' SOUTH OF CORNER. SET 1/4 STONE IN PLACE OF OLD STAKE AGREEING WITH STUMPS OF WITNESS TREES. CORRECTED VAR 6-46

CONTINUED WEST VAR 6-30

5294.52 INTERSECTED SECTION LINE 18.48' SOUTH OF CORNER SET STONE FOR CORNER OF SECTIONS 35 & 36 IN PLACE OF OLD STAKE. CORRECTED VAR 6-55

PG 133 NORTH BETWEEN 35 & 36 VARIATION 6

2588.52 SET STONE FOR 1/4 SEC CORNER BY ROOTS OF WITNESS TREES

CONTINUED NORTH SAME VARIATION

5179.68 INTERSECT SECTION LINE 2.64' WEST OF CORNER. SET STONE FOR CORNER SECS 25 & 26, 35,36 BY STUMP OF LINE TREE AND ROOTS OF WITNESS TREE. CORRECTED VARIATION 6-03

1920? TISSANDIER SET CONC. MON. WITH BRASS PLUG AT NW COR SEC 5 T46N R1E WHICH IS BETWEEN THE S 1/4 COR SEC 35 7 SE COR OF SEC 35. DISTANCE BETWEEN THE NW & NE CORNERS SEC 5 5225.00 & AN ANGLE OF 179-43-43 @ NW COR SEC 5 FROM NW COR SEC 6 TO NE COR SEC 5.

1957 SHIMEALL #8506 2587.25' TO W 1/4 COR SEC 36.

1975 SPRAGUE N/S 182,386.45'; E/W 2,229,406.23'

1979 BARNES VOL 5 PG 536 2648.83' TO S 1/4 COR SEC 36, 2587.33' TO W 1/4 COR SEC 36 2683.23 TO S 1/4 COR SEC 35, AN ANGLE OF 89-37-23 @ SE COR SEC 35 FROM S 1/4 TO E 1/4 CORNERS SEC 35, & AN ANGLE OF 90-02-03 @ SE COR SEC W 1/4 COR SEC 36 TO S 1/4 COR SEC 36.

DUG IN THE SPRING WHEN THERE WAS A LOT OF RAIN. DUG 1.5' DEEP HOLE THAT FILLED IN WITH WATER. CAME BACK LATER BUT CROPS WERE IN. NEED TO DIG FOR BASE OF L.S. AND INSTALL MONUMENT IN THE FALL WHEN THE CROPS ARE GONE AND THE LAND IS DRY.

C) Was the corner restored through acceptance of (1) an obliterated evidence location, or, (2) a found perpetuated location?

CORNER RESTORED THROUGH ACCEPTANCE OF OBLITERATED EVIDENCE LOCATION.

D) Describe any material discrepancy between the location of the corner as restored or reestablished and the location of that corner as previously restored or reestablished by distance and direction. Show the discrepancy on the plan view drawing under (a), above. Show the distances between the corner as previously restored or reestablished and (1) the corner as restored or reestablished, and (2) to at least 4 of the witness monuments shown on the drawing in (a), above.

(E) Was the corner reestablished through lost corner proportionate methods? If so, show the method, including the directions and distances to other public land survey corners used as evidence or used for proportioning the corner location.

I, Donald Barnes, hereby certify that the corner location as identified by the corner code index was determined by me under my direction and control and that this U.S. Public Land Survey Monument Record is correct and complete to the best of my knowledge and belief.

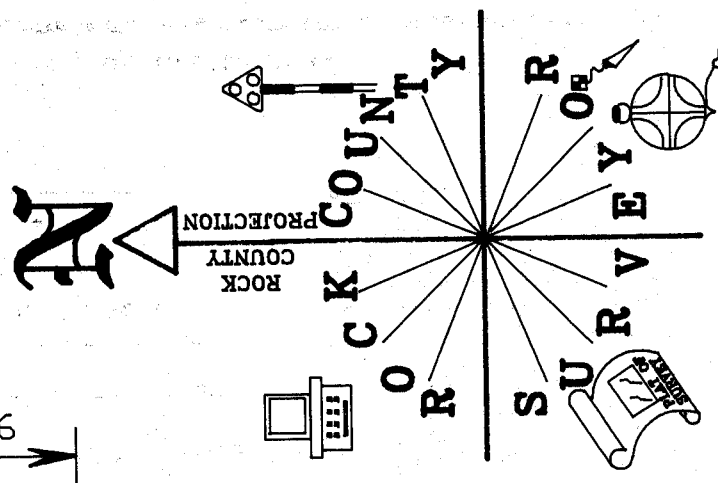
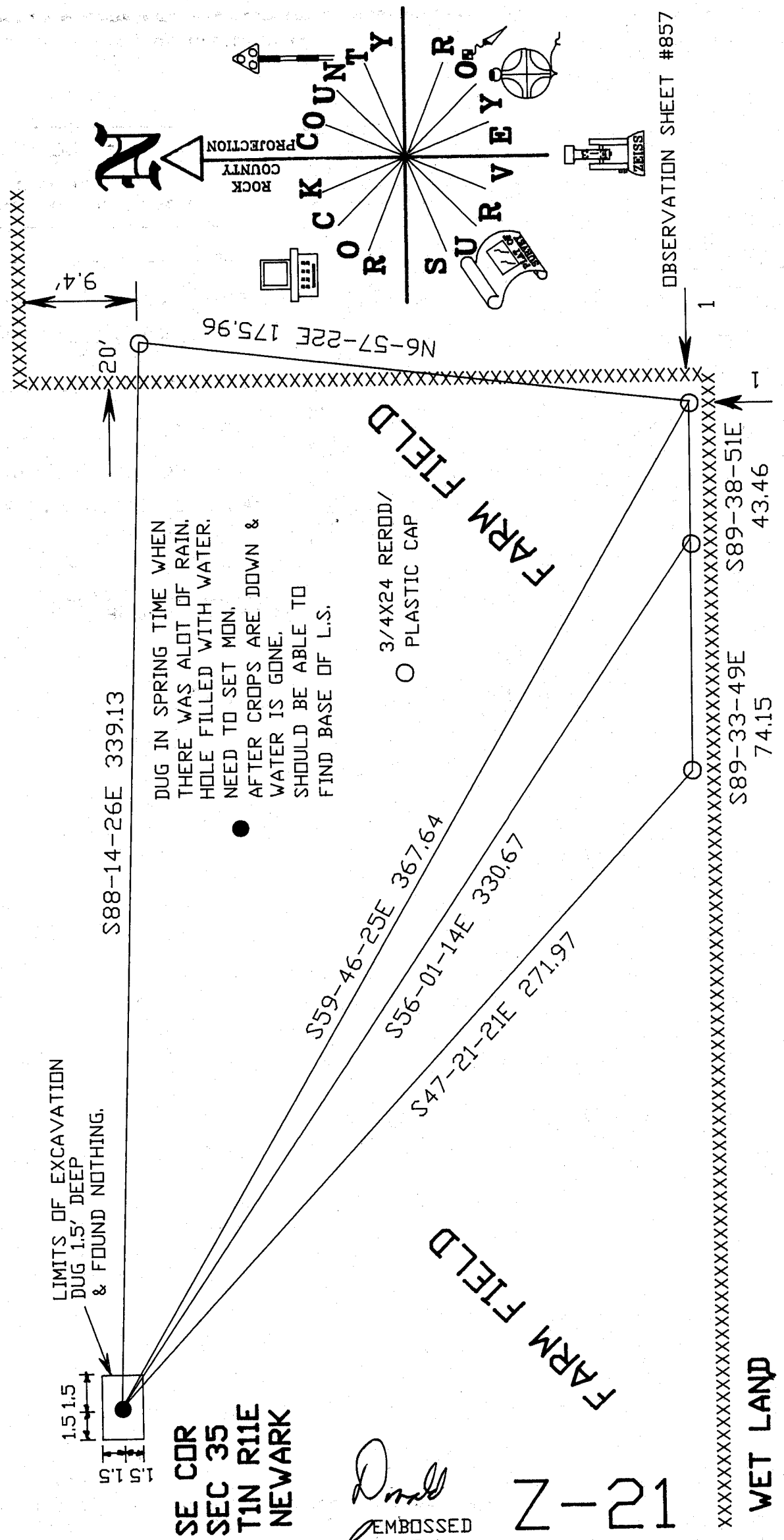
seal

PAGE 2 OF 3

emboss
Donald Barnes
6-29-01

CORNER CODE **Z-21**

A-E 7.08 REQUIREMENT



SE COR
SEC 35
T1N R11E
NEWARK

Donald Barnes
EMBOSSED SEAL
6.29.01

12-21

WET LAND

OBSERVATION SHEET #857