

U.S. PUBLIC LAND SURVEY MONUMENT RECORD

For Public Land Survey Corners in:

WI ADMINISTRATIVE CODE A-E 7.08 REQUIREMENT

T. 1N., R. 11E

CORNER CODE INDEX

A	1	2	3	4	5	6	7	8	9	10	11	12	13	14	15	16	17	18	19	20	21	22	23	24	25
B																									
C	6																								
D																									
E																									
F	1																								
G		8																							
H																									
J																									
K	18																								
L		17																							
M																									
N																									
O																									
P	19																								
Q		20																							
R																									
S																									
T	30																								
U		29																							
V																									
W																									
X	31																								
Y		32																							
Z																									

NEWARK TWP
ROCK COUNTY WI

IF AVAILABLE
ROCK COUNTY COORDINATES PREFERRED

North _____ Elev. _____

East _____

Hor. Datum _____ Vert. Datum _____

LATITUDE _____ ELLIPS. HT. _____

LONGITUDE _____

GPS (X) _____ TRAVERSE (X) _____

BASED ON THE FOLLOWING CONTROL:

PLACE MONUMENT SYMBOL AT PROPER LOCATION ON ABOVE INDEX

CORNER MONUMENT

WITNESS MONUMENT

(a)

BEARINGS ARE BASED ON:

OBSERVATION SHEET 857

FIELD BOOK _____ PAGE # _____

SHEET 1 OF 3

SHOW A PLAN VIEW DRAWING DEPICTING THE CORNER MONUMENT AND SURROUNDING PHYSICAL FEATURES, INCLUDING THE EXCAVATION AREA AND DEPTH.

PLANNING & ZONING COMMITTEE ADOPTED THE ABOVE FORM ON 12/2/1982

CORNER CODE 8-23

NE632

(B) Describe any record evidence, monument evidence, occupational evidence, testimonial evidence or any other material evidence you considered, and whether the monument was found or placed.

1832 LYONS

PG 1 (BELOIT RECORDS)

EAST ALONG THE SOUTH SIDE
OF SEC 36 T1N R11E VAR 6-50E.

2640 PASSING THROUGH A DEEP PLASH AND SOME SCATTERING BUR OAK TREES, SET POST FOR 1/4 SECTION CORNER. BUR OAK 16 S68E 139.92', NO OTHER BEARING.

5280 SET A POST IN PLASHY GROUND, AS BEFORE, FOR CORNER TO SEC 36 OF R11 & SEC 31 OF R12E OF THE 4TH PRINCIPAL MERIDIAN BUR OAK 21 WEST 2049.96' CHS, NO OTHER BEARING. THE ABOVE BEARING TREE STANDS ALL ALONE. LAND, FLAT, WET, 3RD RATE PRAIRIE.

1836 ILL PLAT NW COR SEC 4 T46N R1E IS 528' EAST OF S 1/4 COR SEC 36

1836 SPAULDING

PAGE 96

NORTH BETWEEN SECTIONS 4 & 5 T46 NORTH RANGE
ONE EAST OF THE 3RD PRINCIPLE MERIDIAN

11.22 A BUR OAK 20 INCHES DIAMETER

726 A STREAM 16.5' WIDE RUNS S.W.

2640 SET A POST FOR QUARTER SECTION CORNER FROM WHICH A BUR OAK 12 INCHES DIAMETER BEARS N13W 830.28' DISTANT. LAND ALL LEVEL WET PRAIRIE NOT FIT FOR CULTIVATION.

4777.74 INTERSECTED THE NORTH BOUNDARY OF ILLINOIS AND BASE LINE OF THE NORTH WEST TERRITORY 528' EAST OF THE QUARTER SECTION CORNER ON THE SOUTH BOUNDARY OF SECTION 36 TOWNSHIP ONE NORTH RANGE 11 EAST OF THE 4TH PRINCIPLE MERIDIAN AND AT SAID INTERSECTION SET A POST FOR CORNER TO SECTIONS 4 & 5 TOWNSHIP 46 NORTH RANGE ONE EAST FROM SAID POST A BUR OAK 8 INCHES DIAMETER BEARS S33-30W 48.84' AND A BUR OAK 12 INCHES DIAMETER BEARS S10-30E 100.98' DISTANT. LAND ALL LEVEL WET PRAIRIE NOT FIT FOR CULTIVATION JAN 12TH 1836

1852 McVEAN VOL 1 PG 12 5280' TO N 1/4 COR SEC 36. STATES NOTHING ABOUT COR.

1871 COLLIN'S REMONUMENTATION NOTES

PG 132 WEST ON SOUTH LINE SEC 36 VAR 6-30

2646.6 INTERSECTED 1/4 LINE 11.88' SOUTH OF CORNER SET 1/4 STONE IN PLACE OF OLD STAKE AGREEING WITH STUMPS OF WITNESS TREES. CORRECTED VAR 6-46

CONTINUED WEST VAR 6-30

5294.52 INTERSECTED SECTION LINE 18.48' SOUTH OF CORNER SET STONE FOR CORNER OF SECTIONS 35 & 36 IN PLACE OF OLD STAKE. CORRECTED VAR 6-55

1920? TISSANDIER CONC. MON. WITH BRASS PLUG @ NE COR SEC 5, 5225.00 TO NW COR SEC 5, 5259.30 TO NE COR SEC 4 T46N R1E, ANGLE OF 170-18-20 @ NE COR SEC 5 FROM NE COR SEC 4 TO NW COR SEC 5, LAT 42-30-24.70; LONG 89-09-39.70.

1975 SPRAGUE #6044 N/S 182,404.50; E/W 2,232.055.06 535.67' WEST OF NW COR SEC 4, 2603.92' TO CENTER OF SEC 36, 2645.69' TO SE COR SEC 36, & 2648.89' TO SW COR SEC 36.

1979 BARNES VOL 5 PG 536 2648.83' TO SW COR SEC 36 & ANGLE OF 90-02-03 @ SW COR SEC 36 FROM W 1/4 TO S 1/4 CORNERS SEC 36.

Donald Barnes
7-09-01

SHEET 1 OF 3

CORNER CODE **Z-23**

NE632

1998 ALLIANT CO. FD HARRISON CAST IRON (C.I.) MON 182,414.65';
2,220,516.45' NAD83(91) & @ NW COR SEC 4 N/S 185,018.57'; E/W 2,200,497.00'
A CONCRETE MON.

I CONVERTED ALLIANT'S COORDINATES TO COUNTY. S ¼ COR SEC 36 N/S
201,452.32'; E/W 461,791.516'. NW COR SEC 4 N/S 201440.92' E/W 462327.231'. FD
C.I. WITH PIECES OF CUT L.S. BY C.I. SET CARSONITE POST ON EAST SIDE.
C.I. IS 1' SOUTH OF E/W FENCE & 0.5' WEST OF N/S FENCE.

C) Was the corner restored through acceptance of (1) an obliterated evidence location, or, (2) a found
perpetuated location?

ACCEPTED FD C.I.

D) Describe any material discrepancy between the location of the corner as restored or reestablished
and the location of that corner as previously restored or reestablished by distance and direction. Show
the discrepancy on the plan view drawing under (a), above. Show the distances between the corner as
previously restored or reestablished and (1) the corner as restored or reestablished, and (2) to at least
4 of the witness monuments shown on the drawing in (a), above.

**COLLIN CLAIMED TO HAVE FOUND STUMPS OF WITNESS TREES. THIS
CONTRADICTS LYONS STATEMENT OF ONLY ONE WITNESS TREE.**

(E) Was the corner reestablished through lost corner proportionate methods? If so, show the method,
including the directions and distances to other public land survey corners used as evidence or used for
proportioning the corner location.

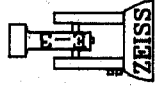
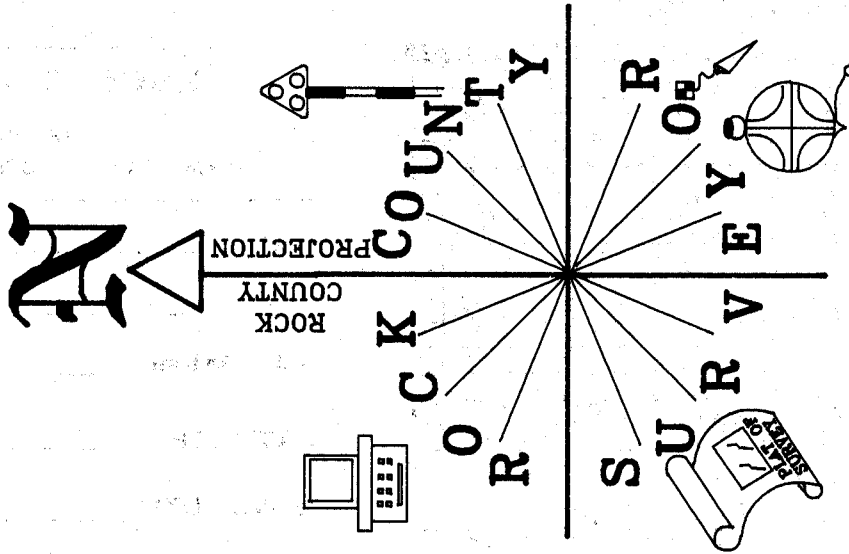
I, Donald Barnes, hereby certify that the corner location as identified by the corner code index
was determined by me under my direction and control and that this U.S. Public Land Survey
Monument Record is correct and complete to the best of my knowledge and belief.

Donald
Barnes
7-09-01
emboss

SHEET 2 OF 3

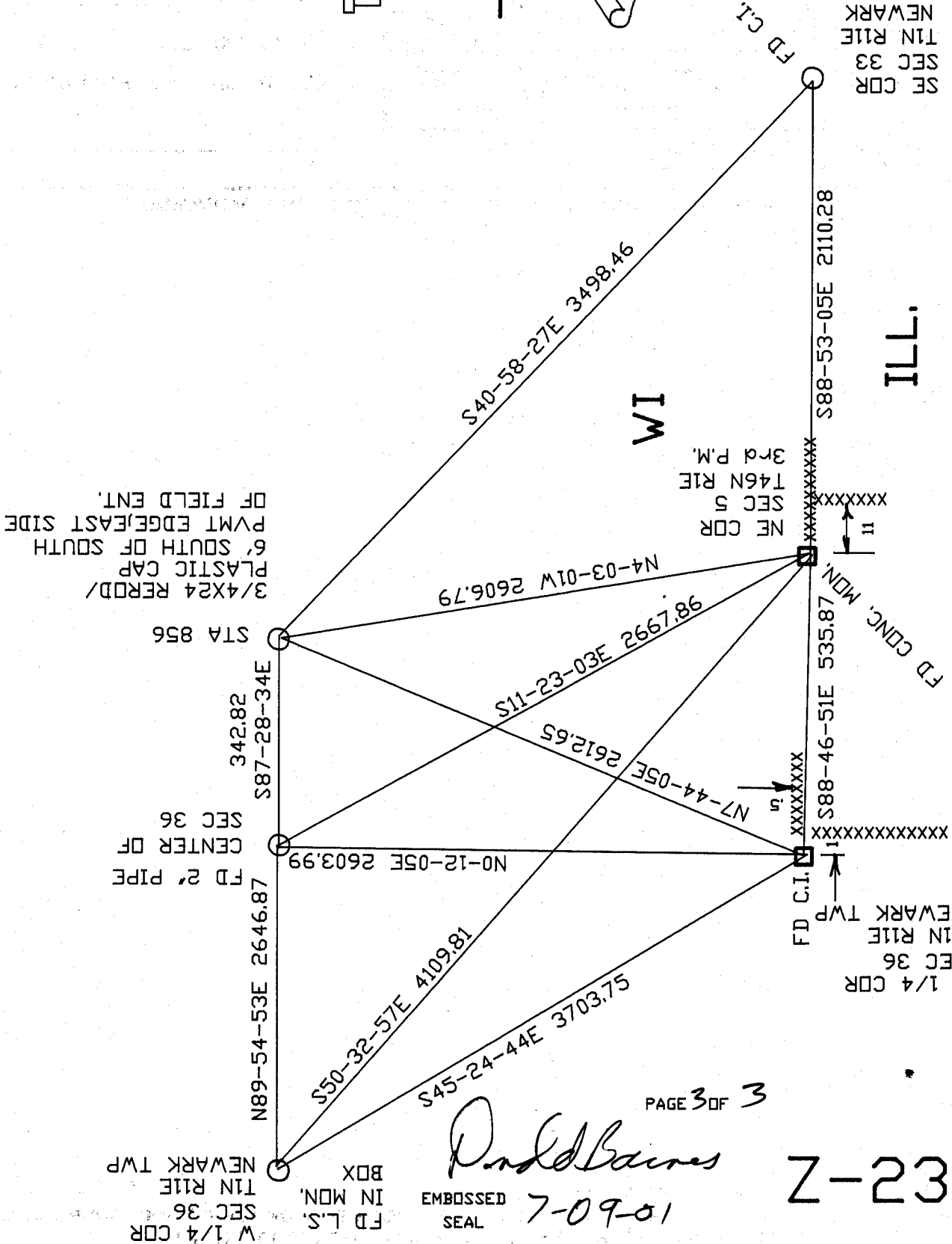
CORNER CODE **Z-23**

A-E 7.08 REQUIREMENT



NOT TO SCALE
OBSERVATION SHEET 857 & 856

SE CDR
SEC 33
T1N R11E
NEWARK



ILL.

PAGE 3 OF 3

Donald Barnes

EMBOSSED SEAL

109-07

23-2

FD L.S.
IN MON.
SEC 36
T1N R11E
NEWARK TWP
BDX