

U.S. PUBLIC LAND SURVEY MONUMENT RECORD

For Public Land Survey Corners in:

WI ADMINISTRATIVE CODE A-E 7.08 REQUIREMENT

T. 1 N., R. 11 E

CORNER CODE INDEX

A	1	2	3	4	5	6	7	8	9	10	11	12	13	14	15	16	17	18	19	20	21	22	23	24	25
B	6																								
C		5																							
D			4																						
E				3																					
F					2																				
G						1																			
H	1																								
I		8																							
J			9																						
K				10																					
L					11																				
M						12																			
N	18																								
O		17																							
P			16																						
Q				15																					
R					14																				
S						13																			
T	18																								
U		20																							
V			21																						
W				22																					
X					23																				
Y						24																			
Z							25																		

PLACE MONUMENT SYMBOL AT PROPER LOCATION ON ABOVE INDEX

NEWARK TWP

ROCK COUNTY WI

IF AVAILABLE
ROCK COUNTY COORDINATES PREFERRED

North _____ Elev. _____

East _____

Hor. Datum _____ Vert. Datum _____

LATITUDE _____ ELLIPS. HT. _____

LONGITUDE _____

GPS (X) _____ TRAVERSE (X) _____

BASED ON THE FOLLOWING CONTROL:

CORNER MONUMENT

WITNESS MONUMENT

(a)

BEARINGS ARE BASED ON:

FIELD BOOK _____ PAGE # _____

SHEET 1 OF 3

SHOW A PLAN VIEW DRAWING DEPICTING THE CORNER MONUMENT AND SURROUNDING PHYSICAL FEATURES, INCLUDING THE EXCAVATION AREA AND DEPTH.

PLANNING & ZONING COMMITTEE ADOPTED THE ABOVE FORM ON 12/2/1982

CORNER CODE 219/20

NE4059

(B) Describe any record evidence, monument evidence, occupational evidence, testimonial evidence or any other material evidence you considered, and whether the monument was found or placed.

- 1832 LYONS PG 3 EAST ALONG THE SOUTH SIDE OF SEC 35 VAR 6-50E
2640 TO 1/4 SEC CORNER WHICH IS NOT ESTABLISHED ON ACCOUNT OF HIGH WATER WHICH COVERS THE GROUND FOR CONSIDERABLE DISTANCE. A BRISK RUNNING STREAM ABOUT 23.1' WIDE RUNS SOUTH BUT A SHORT DISTANCE WEST OF THE 1/4 SEC CORNER (ON WHERE CORNER SHOULD BE)
5280 SET POST FOR CORNER TO SECS 35 & 36 BUR OAK 14 N20E 104.94'; NO OTHER BEARING TREE
- 1836 SPAULDING ILL ORIG SURVEYOR (JANUARY)
PG 94
NORTH BETWEEN SECTIONS 5 & 6 TOWNSHIP 46 NORTH RANGE
ONE EAST OF THE 3RD PRINCIPAL MERIDIAN.
- 2085.6 TO BUR OAK 15 INCHES DIAMETER
2640 SET A POST FOR QUARTER SECTION CORNER FROM WHICH A BUR OAK 15 INCHES DIAMETER BEARS S82-30E 144.54' AND A FORKED BUR OAK 15 INCHES DIAMETER BEARS N49-15E 99.0' DISTANT. LAND ROLLING A STRIP OF FLAT WET BETWEEN THE RIDGES. ABOUT ONE HALF TOO WET FOR CULTIVATION. TIMBER OAK ON THE RIDGES. NO UNDER GROWTH.
- 4862.88 INTERSECTED THE NORTH BOUNDARY OF ILLINOIS AND BASE LINE OF THE NORTH WEST TERRITORY. 2032.8' WEST OF THE CORNER TO SECTIONS 35 & 36 TOWNSHIP ONE NORTH RANGE 11 EAST OF THE 4TH PRINCIPAL MERIDIAN AND AT SAID INTERSECTION SET A POST FOR CORNER TO SECTIONS 5 & 6 FROM WHICH A BLACK OAK 24 INCHES DIAMETER A LONE TREE BEARS N25W 172.26' TREE MARKED BT. NO OTHER TREE NEAR. LAND LEVEL WET PRAIRIE NOT FIT FOR CULTIVATION. THE POST - 8 INCHES DIAMETER
- 1871 COLLINS REMONUMENTATION NOTES
PG 161 WEST ON SOUTH LINE OF 35 VARIATION 6
- 660 CREEK
726 SAME
818.4 SAME
2681.58 SET 1/4 STONE.
CONTINUED WEST SAME VARIATION
- 5361.18 SET STONE FOR CORNER OF 34 & 35 IN PLACE OF OLD STAKE AGREEING WITH WITNESS TREE. NOTED S53W BUT IS N53W WITH PLAIN MARK.
- 1920 TISSANDIER. SET CONC. MON. WITH BRASS PLUG @ NE COR SEC 6 T46N R1E, 4689.00' TO NW COR SEC 6, 5225.00' TO NE COR SEC 5, ANGLE OF 179-43-43 @ NE COR SEC 6 FROM NW COR SEC 6 TO NE COR SEC 5. LAT 42-30-25.28; LONG 89-10-49.47'
- 1979 BARNES VOL 5 PG 536 2683.23' TO SE COR SEC 35 & 2680.82' TO SW COR SEC 35, ANGLE OF 89-22-41 @ SW COR SEC 35 FROM W 1/4 TO S 1/4 CORNERS SEC 35, ANGLE OF 89-37-23 @ SE COR SEC 35 FROM S 1/4 COR TO E 1/4 CORNERS SEC 35.
- 1979 THOM #3296 2681.18' TO SW COR SEC 35.

PAGE 1 OF 3

CORNER CODE Z-19/20

Donald Barnes
6-29-01

WAS NOT ABLE TO FIND RECORDS IN ILL. COURT HOUSE THAT DETAILS WHAT TISSANDIER FOUND OR HOW HE ESTABLISHED THE CORNER. FOUND TISSANDIER CONC. MON WITH BRASS PLUG LEANING. STRAIGHTENED SAME & PLACED CARSONITE POST ON EAST SIDE. MON IS 26" ABOVE THE GROUND.

C) Was the corner restored through acceptance of (1) an obliterated evidence location, or, (2) a found perpetuated location?

ACCEPTED FOUND PERPETUATED LOCATION.

D) Describe any material discrepancy between the location of the corner as restored or reestablished and the location of that corner as previously restored or reestablished by distance and direction. Show the discrepancy on the plan view drawing under (a), above. Show the distances between the corner as previously restored or reestablished and (1) the corner as restored or reestablished, and (2) to at least 4 of the witness monuments shown on the drawing in (a), above.

(E) Was the corner reestablished through lost corner proportionate methods? If so, show the method, including the directions and distances to other public land survey corners used as evidence or used for proportioning the corner location.

I, Donald Barnes, hereby certify that the corner location as identified by the corner code index was determined by me under my direction and control and that this U.S. Public Land Survey Monument Record is correct and complete to the best of my knowledge and belief.

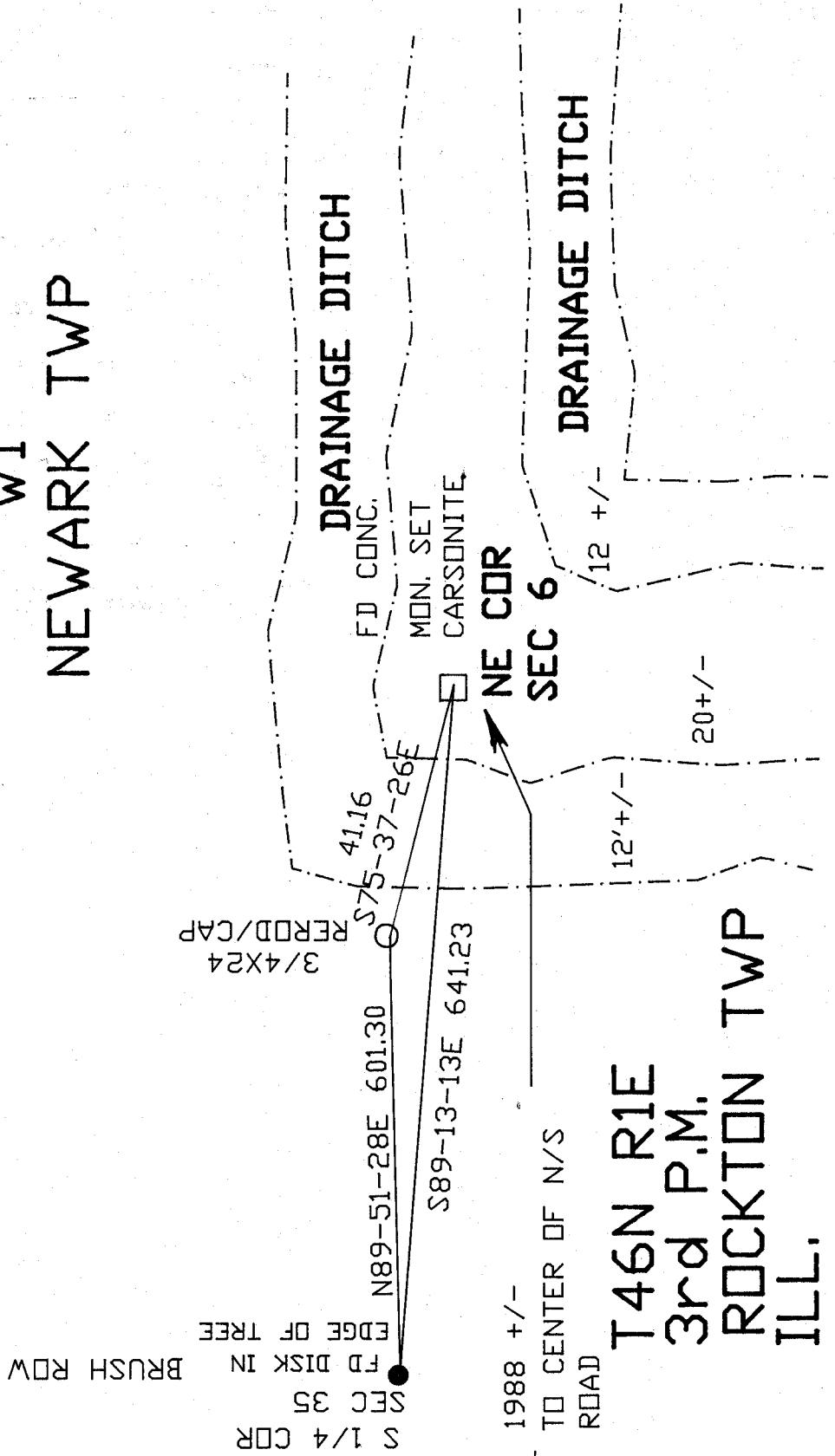
seal
Donald Barnes
6-29-01
emboss

PAGE 2 OF 3

CORNER CODE Z-19/20

A-E 7.08 REQUIREMENT

WI
NEWARK TWP



Donald Barnes
EMBOSSSED
6-29-01 SEAL

02/19/20