

U.S. PUBLIC LAND SURVEY MONUMENT RECORD

For Public Land Survey Corners in:

WI ADMINISTRATIVE CODE A-E 7.08 REQUIREMENT

T. 1 N., R. 11 E

CORNER CODE INDEX

NEWARK TWP

ROCK COUNTY WI

IF AVAILABLE
ROCK COUNTY COORDINATES PREFERRED

1	2	3	4	5	6	7	8	9	10	11	12	13	14	15	16	17	18	19	20	21	22	23	24	25
A																								
B	6																							
C		5																						
D			4																					
E				3																				
F					2																			
G	1																							
H		8																						
I			9																					
J				10																				
K					11																			
L	18					17																		
M							16																	
N								15																
O									14															
P										13														
Q	19										22													
R		20										21												
S			20										22											
T				20										23										
U					20										23									
V						20										24								
W							20										24							
X								20										24						
Y									20										24					
Z										20										24				

North _____ Elev. _____

East _____

Hor. Datum _____ Vert. Datum _____

LATITUDE _____ ELLIPS. HT. _____

LONGITUDE _____

GPS (X) _____ TRAVERSE (X) _____

BASED ON THE FOLLOWING CONTROL:

PLACE MONUMENT SYMBOL AT PROPER LOCATION ON ABOVE INDEX

CORNER MONUMENT

WITNESS MONUMENT

(a)

BEARINGS ARE BASED ON:

FIELD BOOK _____ PAGE # _____

SHEET 1 OF 2

SHOW A PLAN VIEW DRAWING DEPICTING THE CORNER MONUMENT AND SURROUNDING PHYSICAL FEATURES, INCLUDING THE EXCAVATION AREA AND DEPTH.

PLANNING & ZONING COMMITTEE ADOPTED THE ABOVE FORM ON 12/2/1982

CORNER CODE J-23

NE552

(B) Describe any record evidence, monument evidence, occupational evidence, testimonial evidence or any other material evidence you considered, and whether the monument was found or placed.

1834 MILLER PG 12 EAST RANDOM BETWEEN SECS 12 & 13
4290 CREEK BOTTOM (MARSHY)
4818 CREEK 9.9' C. SOUTH
5230.5 INTERSECT RANGE LINE 59.4' NORTH OF POST
LAND SAME

WEST CORRECTED BETWEEN SEC 12 & 13

2614.92 SET 1/4 SEC POST. W.O. 8 IN S20E 25.08'; YEL. OAK N34W 14.52'
2865.72 W.O. 12 IN DIAMETER
5230.5 SEC. COR.

1863 LOCKE VOL 1 PG 186 FD WHERE BTS WHERE DUG OUT. VAR 6-10 2666.4 TO CENTER OF SEC 13 & 5332.8 TO S 1/4 COR SEC 13.

1871 COLLINS REMONUMENTATION NOTES

PG 141 EAST BETWEEN 12 & 13 VARIATION 5-30

2640.66 SET 1/4 STONE.

CONTINUED EAST SAME VARIATION

5281.32 SEC CORNER.

1881 LEE VOL 2 PG 330 STATES NOTHING ABOUT COR. VAR 5-32 2638.68 TO CENTER OF SEC 12, 5283.96 TO N 1/4 COR SEC 12, & VAR 5-16 2631.42 TO SW COR SEC 12.

1965 BATTERMAN VOL 4 PG 234 FD CUT STONE MON & REFERENCED.

1981 BARNES VOL 6 PG 132 SET ALUM. SPIKE FROM TIES, 2635.54 TO SW COR SEC 12, 5290.63 TO N 1/4 COR SEC 12, ANGLE OF 89-41-03 @ S 1/4 COR SEC 12 FROM SW COR SEC 12 TO N 1/4 CORNER OF SEC 12, ANGLE OF 89-46-37 @ N 1/4 COR SEC 12 FROM S 1/4 TO NW CORNERS SEC 12, & ANGLE OF 90-20-46 @ N 1/4 COR SEC 12 FROM NE TO S 1/4 CORNERS OF SEC 12.

FD PK THAT WAS IN HARMONY WITH FOUND TIES.

C) Was the corner restored through acceptance of (1) an obliterated evidence location, or, (2) a found perpetuated location?

ACCEPTED FOUND PK

D) Describe any material discrepancy between the location of the corner as restored or reestablished and the location of that corner as previously restored or reestablished by distance and direction. Show the discrepancy on the plan view drawing under (a), above. Show the distances between the corner as previously restored or reestablished and (1) the corner as restored or reestablished, and (2) to at least 4 of the witness monuments shown on the drawing in (a), above.

(E) Was the corner reestablished through lost corner proportionate methods? If so, show the method, including the directions and distances to other public land survey corners used as evidence or used for proportioning the corner location.

I, Donald Barnes, hereby certify that the corner location as identified by the corner code index was determined by me under my direction and control and that this U.S. Public Land Survey Monument Record is correct and complete to the best of my knowledge and belief.

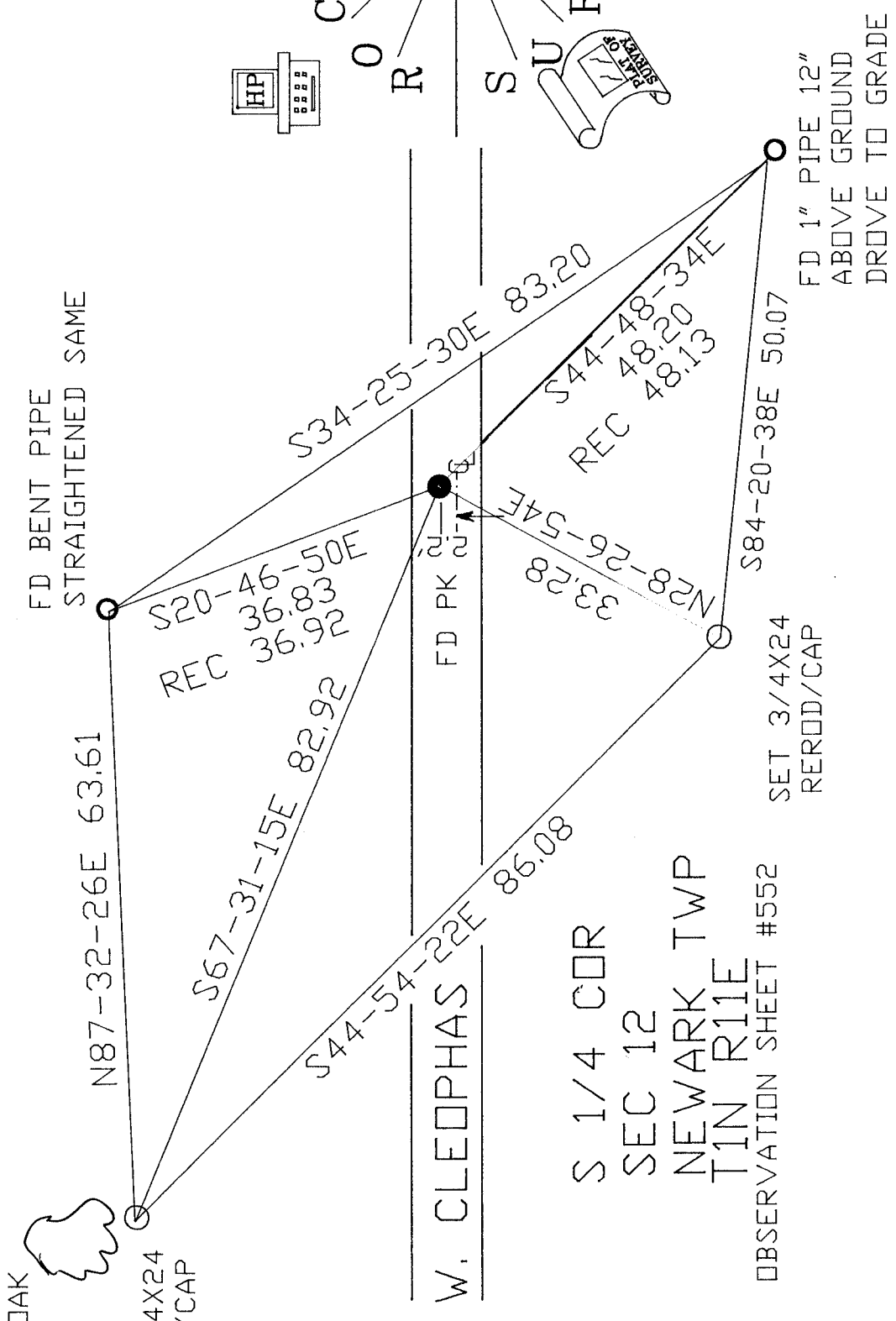
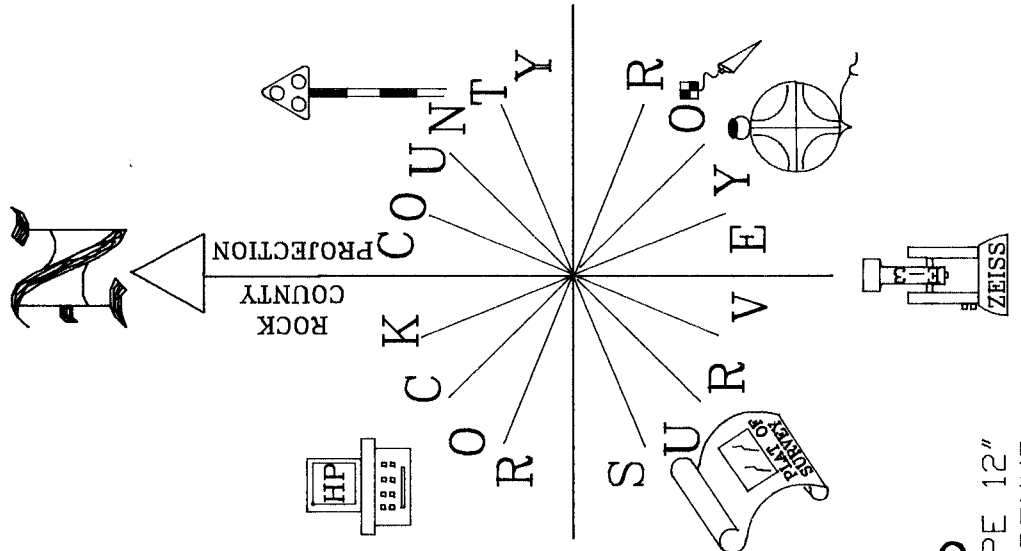
seal

Number of included sheets 1

emboss
Donald Barnes
Dec 20, 2000

CORNER CODE J-23

E 7.08 REQUIREMENT



48" OAK

SET 3/4X24
REROD/CAP

EMBOSSSED
SEAL

Donald R. Hayes
REC 20, 2000

S 1/4 COR
SEC 12
NEWARK TWP
T1N R11E
OBSERVATION SHEET #552

SET 3/4X24
REROD/CAP

FD 1" PIPE 12"
ABOVE GROUND
DROVE TO GRADE

5-23