

U.S. PUBLIC LAND SURVEY MONUMENT RECORD

For Public Land Survey Corners in the

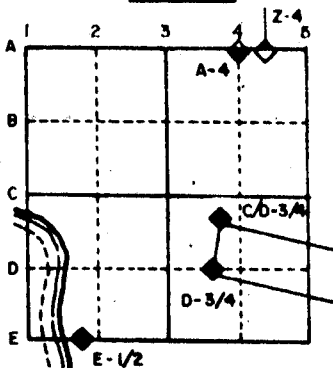
T. 1 N., R. 14 E.

CORNER CODE INDEX

	1	2	3	4	5	6	7	8	9	10	11	12	13	14	15	16	17	18	19	20	21	22	23	24	25
A																									
B																									
C																									
D																									
E																									
F																									
G																									
H																									
I																									
J																									
K																									
L																									
M																									
N																									
O																									
P																									
Q																									
R																									
S																									
T																									
U																									
V																									
W																									
X																									
Y																									
Z																									

PLACE MONUMENT SYMBOL (◆) AT PROPER LOCATION ON ABOVE INDEX

EXAMPLE



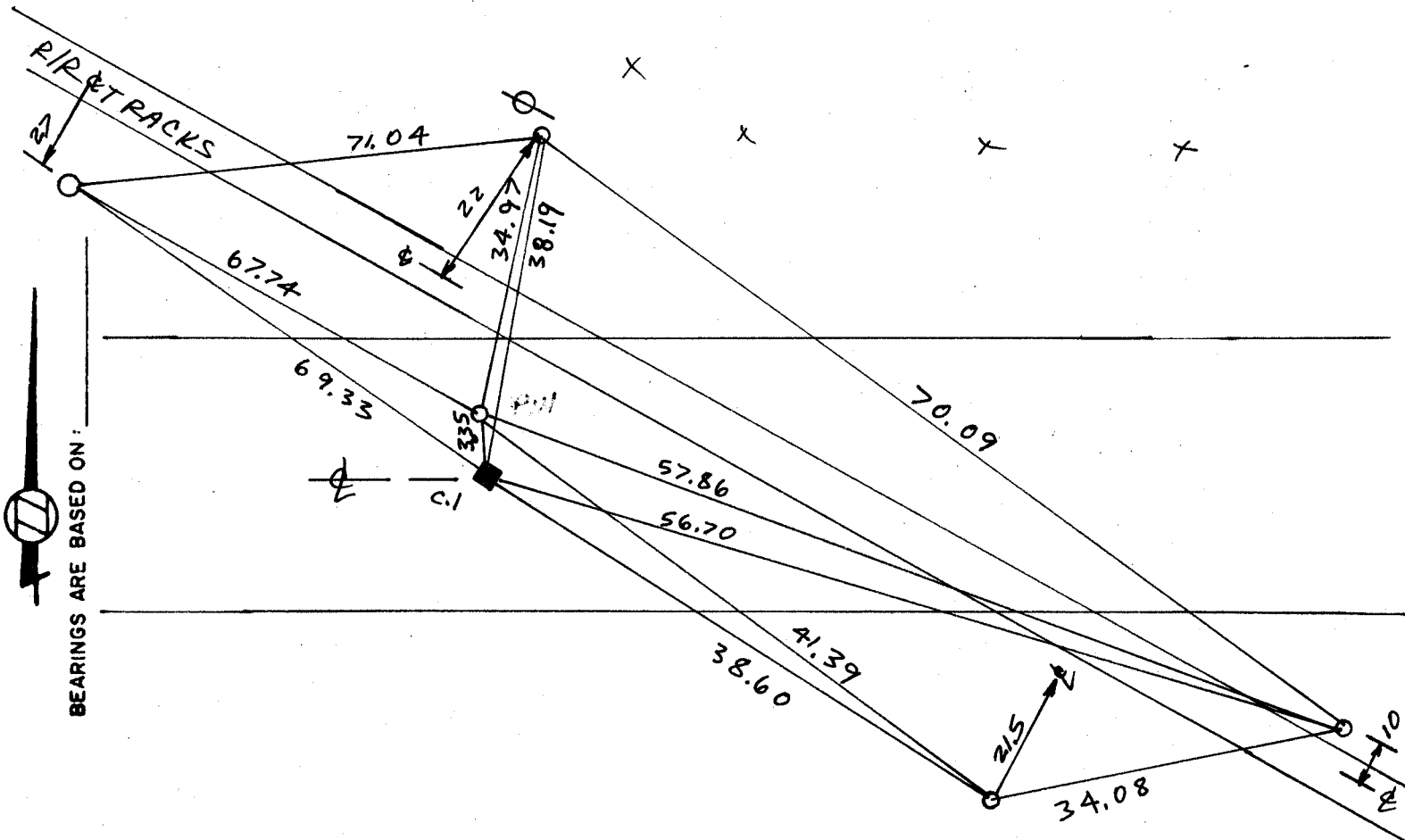
CLINTON TWP
ROCK COUNTY WI

IF AVAILABLE
STATE PLANE COORDINATES

North (Y) _____ Eleve. (Z) _____
 East (X) _____ Zone _____
 Hor. Datum _____ Vert. Datum _____

(a) x ◆ CORNER MONUMENT

○ WITNESS MONUMENT 1/2 x 2 1/4" RE ROD



BEARINGS ARE BASED ON:

FIELD BOOK 2 PAGE # 26

MICROFILMED

SHOW A PLAN VIEW DRAWING DEPICTING THE CORNER MONUMENT AND SURROUNDING PHYSICAL FEATURES, INCLUDING THE EXCAVATION AREA AND DEPTH. THE CORNER MONUMENT SHALL HAVE THE FOLLOWING CHARACTERISTICS: 1) HAVE AT LEAST TWO PREDETERMINED BREAK-OFF POINTS. 2) IF BROKEN, LEAVE A PERMANENTLY MAGNETIZED REMNANT AT THE ORIGINAL POINT. 3) MUST BE EXTENDABLE. 4) THE CAP IS INSCRIBED: ROCK COUNTY SURVEY MONUMENT - PENALTY FOR DISTURBING MARKER. 5) OR AN EXISTING CUT LIMESTONE. AN IRON PIPE 1 1/2" x 4" (MINIMUM) MAY BE USED IN AREAS WHERE GROUND WATER IS WITHIN ONE FOOT OF THE SURFACE. IF THE CORNER IS OCCUPIED BY AN IMPROVEMENT (MANHOLE, BURIED CABLE, ETC.) ANY DURABLE, DISTINCT MONUMENT MAY BE USED. CORNERS SHALL BE REFERENCED WITH AT LEAST 4 DURABLE WITNESS MONUMENTS. WITNESS MONUMENTS SHALL BE MADE OF CONCRETE, NATURAL STONE, IRON OR OTHER EQUALLY DURABLE MATERIAL, EXCEPT WOOD. DESCRIBE THE CORNER AND THE WITNESS MONUMENTS.

CORNER CODE:

E1

- (b.) Describe any record evidence, monument evidence, occupational evidence, testimonial evidence or any other material evidence you considered, and whether the monument was found or placed.
- 1909 KERCH FIELD BOOK K4 PAGE 86. SHOWS CORNER BUT STATES NOTHING ABOUT IT. CALLS FOR A DISTANCE OF 145 TO THE CENTER OF THE R/R TRACKS.
 - 1953 SHIMEAL CALLS FOR A PIN AT THE CORNER ON A SURVEY IN SECTION 6
 - 1965 SHIMEALL CALLS FOR A PIN AT THE CORNER ON A SURVEY IN SECTION 6
 - 1970 BATTERMAN JR. VOL 4 PG 476 FOUND A R/R SPIKE OVER C.M.P. NEAR THE CORNER.
 - 1971 SHIMEALL CSM 2 VOL 161 IN SECTION 6 CALLS FOR A PIN
 - 1971 LEE VOL 4 PG 529 "FOUND CORNER OBLITERATED BY CULVERT, ESTABLISHED CORNER BY RECORD OF SURVEY BY C.V. KERCH AS FILED IN BOOK K-4, PG 86 AT THE JANESVILLE CITY ENGINEERS OFFICE. SET 12" C.I. HARRISON MONUMENT IN PLACE." SKETCH SHOWS THAT C.M.P. PROBABLY DESTROYED ORIGINAL MONUMENT.
 - 1972 SHIMEAL CALLS FOR A PIN AT THE CORNER ON A SURVEY IN SECTION 6
 - 1972 LEE VOL 4 PG 551 USED THE CORNER TO ESTABLISH THE N $\frac{1}{4}$ CORNER OF SECTION 7 LEE USED THE C.I. MONUMENT.
 - 1983 HAROLD COMBS. USED THE CAST IRON MONUMENT FOR CSM 11 PG 193
 - 1985 HAROLD COMBS USED THE PIN FOR A SURVEY IN SECTION 6.

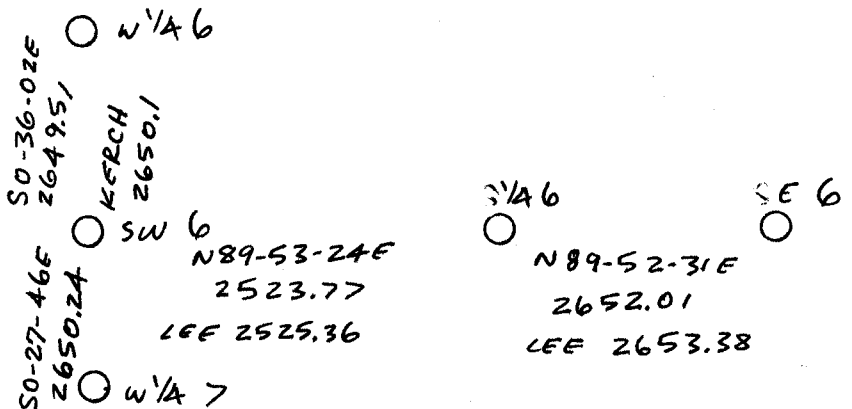
(c.) Was the corner restored through acceptance of (1) an obliterated evidence location, or, (2) a found perpetuated location?

THE DISTANCE TO THE ~~...~~ FROM THE CENTER OF THE TRACKS AT A 90° ANGLE AT THE CENTER OF THE TRACKS IS 10.00 THE DISTANCE TO THE C.I. FROM THE CENTER OF THE TRACKS AT A 90° ANGLE AT THE CENTER OF THE TRACKS IS 12.6'. THE DISTANCE TO THE PIN FROM THE CENTER OF THE TRACKS THAT IS ON LINE WITH THE N/S FENCE TO THE NORTH IS 11.0'. THE DISTANCE TO THE C.I. IS 14.2'.

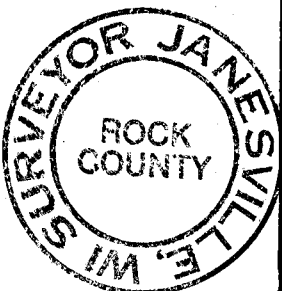
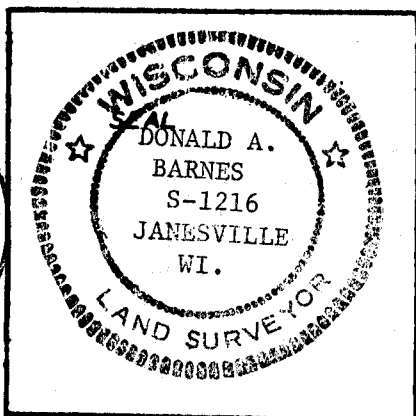
(d.) Describe any material discrepancy between the location of the corner as restored or reestablished and the location of that corner as previously restored or reestablished by distance and direction. Show the discrepancy on the plan view drawing under (a), above. Show the distances between the corner as previously restored or reestablished and (1) the corner as restored or reestablished, and (2) to at least 4 of the witness monuments shown on the drawing in (a), above.

SEE SKETCH

(e.) Was the corner reestablished through lost corner proportionate methods? If so, show the method, including the directions and distances to other public land survey corners used as evidence or used for proportioning in determining the corner location.



I, Donald Barnes, hereby certify that the corner points as identified by the corner code index were, in a field survey on May 12-1987, established, re-established, monumented, re-monumented, recovered or restored as expressed below and in conformance with the regulations and rules as required in the current manual of survey instructions of the United States Department of Interior, Bureau of Land Management.



COUNTY SURVEYOR FILING DATA

Date of Computer Entry _____

Date Received _____

Date Microfilmed 6-17-87

Treasurer's Receipt No. _____

Number of Included Sheets _____

AFFIX YOUR LAND SURVEYOR SEAL. CORNER CODE E1