

# U.S. PUBLIC LAND SURVEY MONUMENT RECORD

For Public Land Survey Corners In: WI ADMINISTRATIVE CODE A-E 7.08 REQUIREMENT

T. 3 N. - R. 10 E. of the 4th P.M.

### CORNER CODE INDEX

MAGNOLIA TWP

ROCK COUNTY WI

(PLACE "◆" SYMBOL AT PROPER PLSS CORNER LOCATION)

A	1	2	3	4	5	6	7	8	9	10	11	12	13	14	15	16	17	18	19	20	21	22	23	24	25	A
B																										B
C																										C
D																										D
E																										E
F																										F
G																										G
H																										H
J																										J
K																										K
L																										L
M																										M
N																										N
O																										O
P																										P
Q																										Q
R																										R
S																										S
T																										T
U																										U
V																										V
W																										W
X																										X
Y																										Y
Z																										Z

### COORDINATES

(GNSS DERIVED VIA WISCORS)

NORTHING: 275951.70 ELEV: N/A

EASTING: 413791.69

Hor. Datum: WISCRS-ROCK, (NA2011)

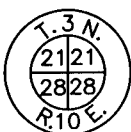
Vertical Datum: NAVD 88, (If applicable)

(a) LEGEND

LINE	BEARING	DISTANCE
L1	N 24°21'18" W	39.31'
L2	N 39°29'40" E	44.78'
L3	S 40°44'21" E	33.74'
L4	S 34°47'19" W	30.36'

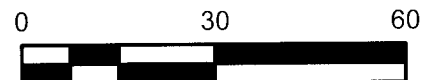
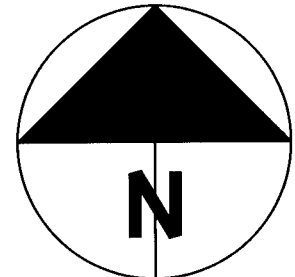
● - 3/4" x 24" REBAR SET W/RED CAP

(#) - PREVIOUS TIE-SHEET DIMENSION



— 3/4" X 24" IRON REBAR SET 4", +/-, BELOW THE ASPHALT SURFACE. THE ALUMINUM MONUMENT AT THIS LOCATION HAS CORRODED AWAY.

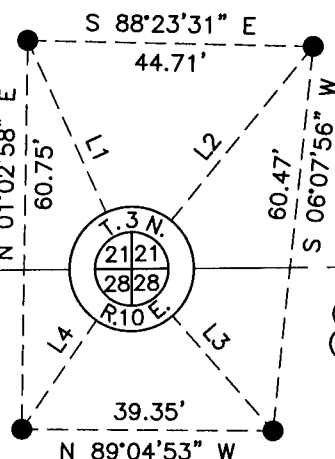
SEE PAGE 2 FOR ADDITIONAL DETAILS.



5/8" IRON REBAR FOUND

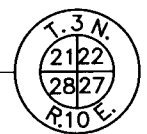
**TOWNSEND**

N 89°58'03" E  
2677.83'  
(2676.93'-BARNES)  
(2677.92-H.J. LEE)



**ROAD**

N 89°58'03" E  
2677.83'  
(2676.93'-BARNES)  
(2677.91-H.J. LEE)



BROKEN ALUM. MONUMENT FD.

**B) Describe any record evidence, monument evidence, occupational evidence, testimonial evidence or any other material evidence you considered, and whether the monument was found or placed.**

I believe this corner was set by Hugh Lee in 1973 although, no document specifically states that. Surveyor records from 1973, 1988 & 2011 show the corner and note it is established on-line between the NE & NW corners of 28-3-10. Different modern era distances are shown for the half-mile "split" of the section line; 1973-Lee, (2677.91 & 2677.92). Barnes, 2011, (2676.93'). My "mile" section line distance is 5,355.66 feet which produces a "split" of 2,677.83 feet; within acceptable tolerances compared to Lee's distance.

I computed my PLSS corner location at the split distance indicated and found an aluminum cap at the surface secured to only a portion of an aluminum monument below. I excavated the cap / portion of monument and found the remainder of the monument to be corroded to the point of only a gray material 12-16" below the asphalt surface. When "staking" to my computed location I land in the middle, more or less, of the gray material.

I compacted the excavated material to within 4" of the asphalt surface and set a 3/4" x 24" iron rebar at the PLSS corner location. I covered the rebar w/cold patch material up to the road surface. Four witnesses were set per the map.

**C) Was the corner restored through acceptance of (1) an obliterated evidence location, or, (2) a found perpetuated location?**

Found perpetuated location.

**D) Describe any material discrepancy between the location of the corner as restored or reestablished and the location of that corner as previously restored or reestablished by distance and direction. Show the discrepancy on the plan view drawing under (a), above. Show the distances between the corner as previously restored or reestablished and (1) the corner as restored or reestablished, and (2) to at least 4 of the witness monuments shown on the drawing in (a), above.**

I did not find a discrepancy between the corner restored and a previously documented corner location. *Discrepancy* being defined as *disagreeing* with a corner location, *not* as noting dimensional differences between current/former tie sheets due to measuring methods. The current and *most recent* tie-sheet dimensions filed for the corner are noted.

**(E) Was the corner reestablished through lost corner proportionate methods? If so, show the method, including the directions and distances to other public land survey corners used as evidence or used for proportioning the corner location.**

N/A

*I, Jason R. Houle, hereby certify that the corner location as identified by the corner code index was determined by me under my direction and control and that this U.S. Public Land Survey Monument Record is correct and complete to the best of my knowledge and belief.*

**CORNER CODE: R-11**  
(A.E. 7.08 REQUIREMENT)

