

U.S. PUBLIC LAND SURVEY MONUMENT RECORD

For Public Land Survey Corners in:

WI ADMINISTRATIVE CODE A-E 7.08 REQUIREMENT

T. 3N., R. 10E

CORNER CODE INDEX

A	1	2	3	4	5	6	7	8	9	10	11	12	13	14	15	16	17	18	19	20	21	22	23	24	25
B																									
C	6																								
D		5																							
E			A																						
F				3																					
G					2																				
H																									
I																									
J																									
K																									
L																									
M																									
N																									
O																									
P																									
Q																									
R																									
S																									
T																									
U																									
V																									
W																									
X																									
Y																									
Z																									

MAGNOLIA TWP
ROCK COUNTY WI

IF AVAILABLE
ROCK COUNTY COORDINATES PREFERRED

North _____ Elev. _____

East _____

Hor. Datum _____ Vert. Datum _____

LATITUDE _____ ELLIPS. HT. _____

LONGITUDE _____

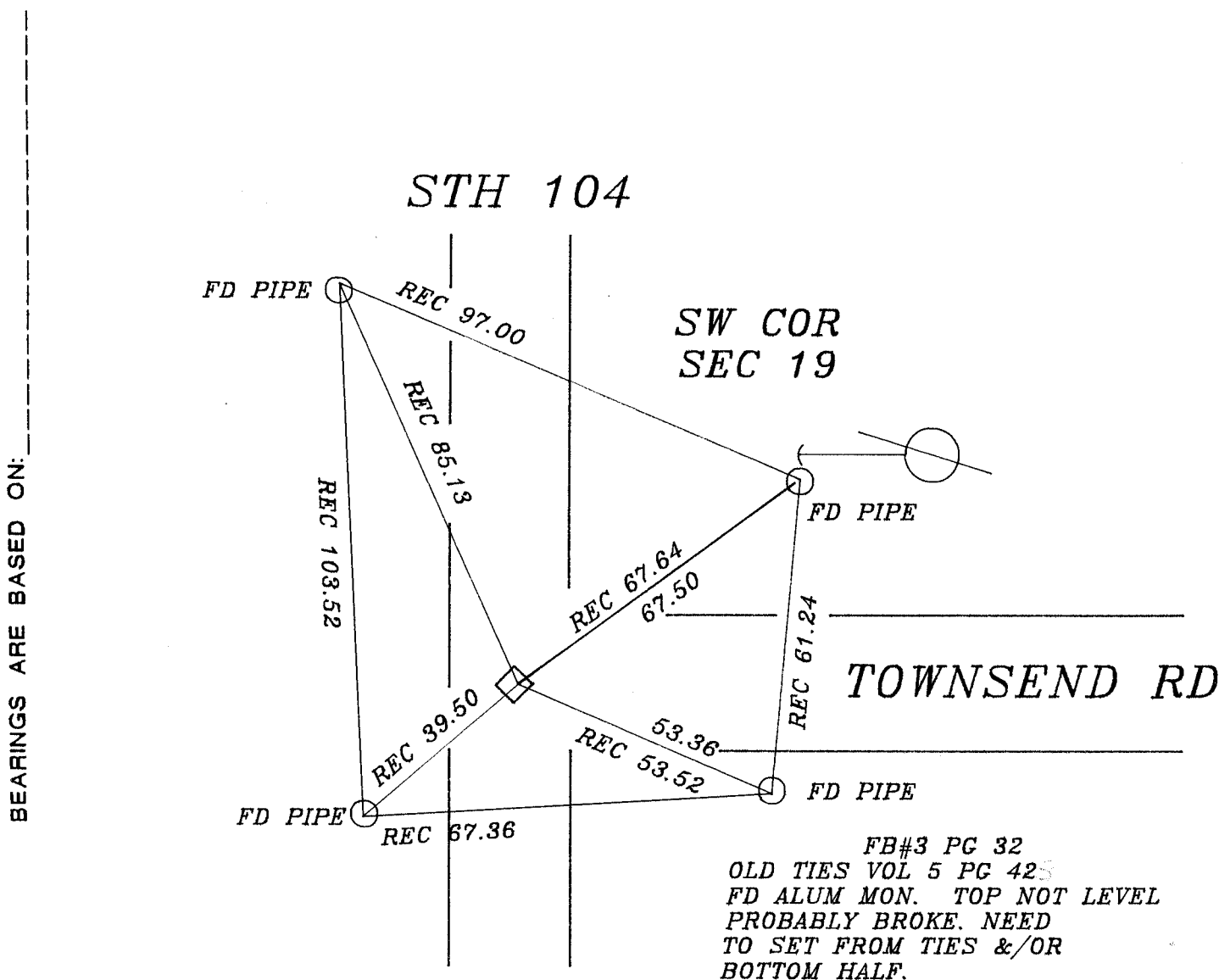
GPS (X) _____ TRAVERSE (X) _____

BASED ON THE FOLLOWING CONTROL:

PLACE MONUMENT SYMBOL \blacklozenge AT PROPER LOCATION ON ABOVE INDEX

\blacklozenge CORNER MONUMENT \circ WITNESS MONUMENT

(a)



FIELD BOOK 3 PAGE # 32

SHEET _____ OF _____

SHOW A PLAN VIEW DRAWING DEPICTING THE CORNER MONUMENT AND SURROUNDING PHYSICAL FEATURES, INCLUDING THE EXCAVATION AREA AND DEPTH.

PLANNING & ZONING COMMITTEE ADOPTED THE ABOVE FORM ON 12/2/1982

CORNER CODE R1

MA581

(B) Describe any record evidence, monument evidence, occupational evidence, testimonial evidence or any other material evidence you considered, and whether the monument was found or placed.

1833 MILLER WEST BET SECS 19 & 30

548.46 HICKY 10

1879.02 BURR O 12

2640 QUARTER SEC COR RED O 14 N43E 57 44' BUR O 10 CORNER 27.52'
RED O 14 & BUR O 10 MARKS

4834.46 BURR O 12

5427.84 INT. WEST BDY SET COR 19 SECS 19 & 30 BUR O 12 MARKS
31.68' RED O 12 N71E 112.2 (FIELD NOTES OR PLAT DOES NOT
STATE JOG DISTANCE)

1937 SUNNY VOL 3 PG 354 DUG 6X6X4 DEEP HOLE. FOUND NO MONUMENT.

1978 BARNES VOL 5 PG 422 FORMER COUNTY SURVEYOR DUG AND FOUND NOTHING.
SET ON LINE WITH SE & E 1/4 CORNERS SEC 25 T3N R9E AT CENTER LINE
OF TOWNSEND ROAD AS CALLED FOR IN THE ROAD RECORDS. SET ALUMINUM
MONUMENT & REFERENCED. 2602.97 TO N 1/4 COR SEC 30, 2665.71 TO W
1/4 COR SEC 19, & 1161.93 TO SE COR SEC 25.

1987 BARNES VOL 6 PG 369 CALLS FOR 2603.06 TO N 1/4 COR SEC 30, 1161.94
TO SE COR SEC 25, 2663.55 TO W 1/4 COR SEC 30, AND ANGLE OF 89-40-
37 FROM N 1/4 COR SEC 30 TO SE COR SEC 25.

FOUND ALUMINUM MONUMENT. TOP WAS PROBABLY BROKE SINCE THE IT WAS NOT
LEVEL. FOUND TIES. NEED TO REPLACE FROM TIES/& OR BOTTOM HALF OF
MONUMENT. MONUMENT WILL BE DISTURBED BY PAVING PROJECT.

C) Was the corner restored through acceptance of (1) an obliterated
evidence location, or, (2) a found perpetuated location?

ACCEPTED FOUND PERPETUATED LOCATION.

D) Describe any material discrepancy between the location of the
corner as restored or reestablished and the location of that corner as
previously restored or reestablished by distance and direction. Show
the discrepancy on the plan view drawing under (a), above. Show the
distances between the corner as previously restored or reestablished
and (1) the corner as restored or reestablished, and (2) to at least 4
of the witness monuments shown on the drawing in (a), above.

(E) Was the corner reestablished through lost corner proportionate
methods? If so, show the method, including the directions and
distances to other public land survey corners used as evidence or used
for proportioning the corner location.

I, Donald Barnes, hereby certify that the corner location as identified
by the corner code index was determined by me under by direction and
control and that this U.S. Public Land Survey Monument Record is
correct and complete to the best of my knowledge and belief.

seal
Donald Barnes
7/25/1996
emboss

Number of included sheets _____

CORNER CODE

A-E 7.08 REQUIREMENT

R-1