

PUBLIC LAND SURVEY MONUMENT RECORD

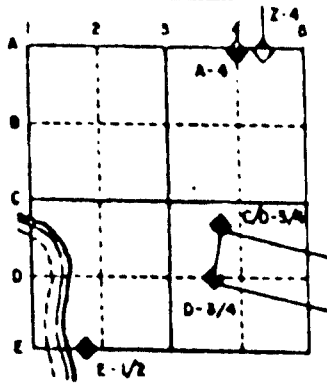
For Public Land Survey Corners in the

T. 3 N., R. 10 E.

CORNER CODE INDEX

	1	2	3	4	5	6	7	8	9	10	11	12	13	14	15	16	17	18	19	20	21	22	23	24	25
A																									
B																									
C																									
D																									
E																									
F																									
G																									
H																									
I																									
J																									
K																									
L																									
M																									
N																									
O																									
P																									
Q																									
R																									
S																									
T																									
U																									
V																									
W																									
X																									
Y																									
Z																									

EXAMPLE



Magnolia TWP
ROCK COUNTY WI

IF AVAILABLE STATE PLANE COORDINATES

North (Y) 283,943.54 Elev. (Z) _____

East (X) 400,433.80 Zone _____

Hor. Datum _____ Vert. Datum _____

283,316.70

400,426.75

PLACE MONUMENT SYMBOL (◆) AT PROPER LOCATION ON ABOVE INDEX BW
11 JWS

◆ CORNER MONUMENT

○ WITNESS MONUMENT

COORDINATES ARE BASED ON THE ROCK COUNTY PROJECTION SYSTEM, ESTABLISHED BY CONVENTIONAL TRAVERSE FROM GPS "ALBANY" 304S AND THE AZIMUTH "ALBANY AZIMUTH" 304A WHICH IS IN THE SW 1/4 OF SECTION 7.

BEARINGS ARE BASED ON:

MA554

(B) Describe any record evidence, monument evidence, occupational evidence, testimonial evidence or any other material evidence you considered, and whether the monument was found or placed.

1873 RUGER VOL 2 PG 109 DROVE STAKE DEEP & PUT ON IT SANDSTONE 12X8X6. CALLS FOR 2627.46 TO CENTER SEC 18 & 2666.4 TO NW & SW CORNERS OF SEC 18. VAR & DISTANCES INDICATES CORNER WAS PLACED EQUAL DISTANCE BETWEEN AND ON LINE WITH THE NW & SW CORNERS OF SEC 18. 1937 SUNNY VOL 3 PG 353 DUG 5X6X4 1/2' DEEP & FOUND NO MONUMENT.

DUG & FOUND OLD ROAD PAVEMENT 3.3' BELOW PRESENT PAVEMENT. BELOW OLD ROAD BED FOUND SANDSTONE 12X5X7 POINT UP. TOP OF STONE 4.8 BELOW PRESENT PAVEMENT. BELOW SANDSTONE FOUND STAKE. PLACED 3/4X24 REROD INSIDE SAKE & PLACED 2 MAGNETS NEXT TO REROD. WILL PLACE MONUMENT AT ROAD SURFACE AFTER HOLE IS REPAIRED.

C) Was the corner restored through acceptance of (1) an obliterated evidence location, or, (2) a found perpetuated location?
ACCEPTED FOUND PERPETUATED LOCATION.

D) Describe any material discrepancy between the location of the corner as restored or reestablished and the location of that corner as previously restored or reestablished by distance and direction. Show the discrepancy on the plan view drawing under (a), above. Show the distances between the corner as previously restored or reestablished and (1) the corner as restored or reestablished, and (2) to at least 4 of the witness monuments shown on the drawing in (a), above.

(E) Was the corner reestablished through lost corner proportionate methods? If so, show the method, including the directions and distances to other public land survey corners used as evidence or used for proportioning the corner location.
NO

I, Donald Barnes, hereby certify that the corner points as identified by the corner code index were, in a field survey on, April 20, 1995, established, re-established, monumented, re-monumented, recovered or restored as expressed below and in conformance with the regulations and rules as required in the current manual of survey instructions of the United States Department of Interior, Bureau of Land Management.

seal

Donald Barnes
2/24/1995

EMBOSS LAND SURVEYOR SEAL

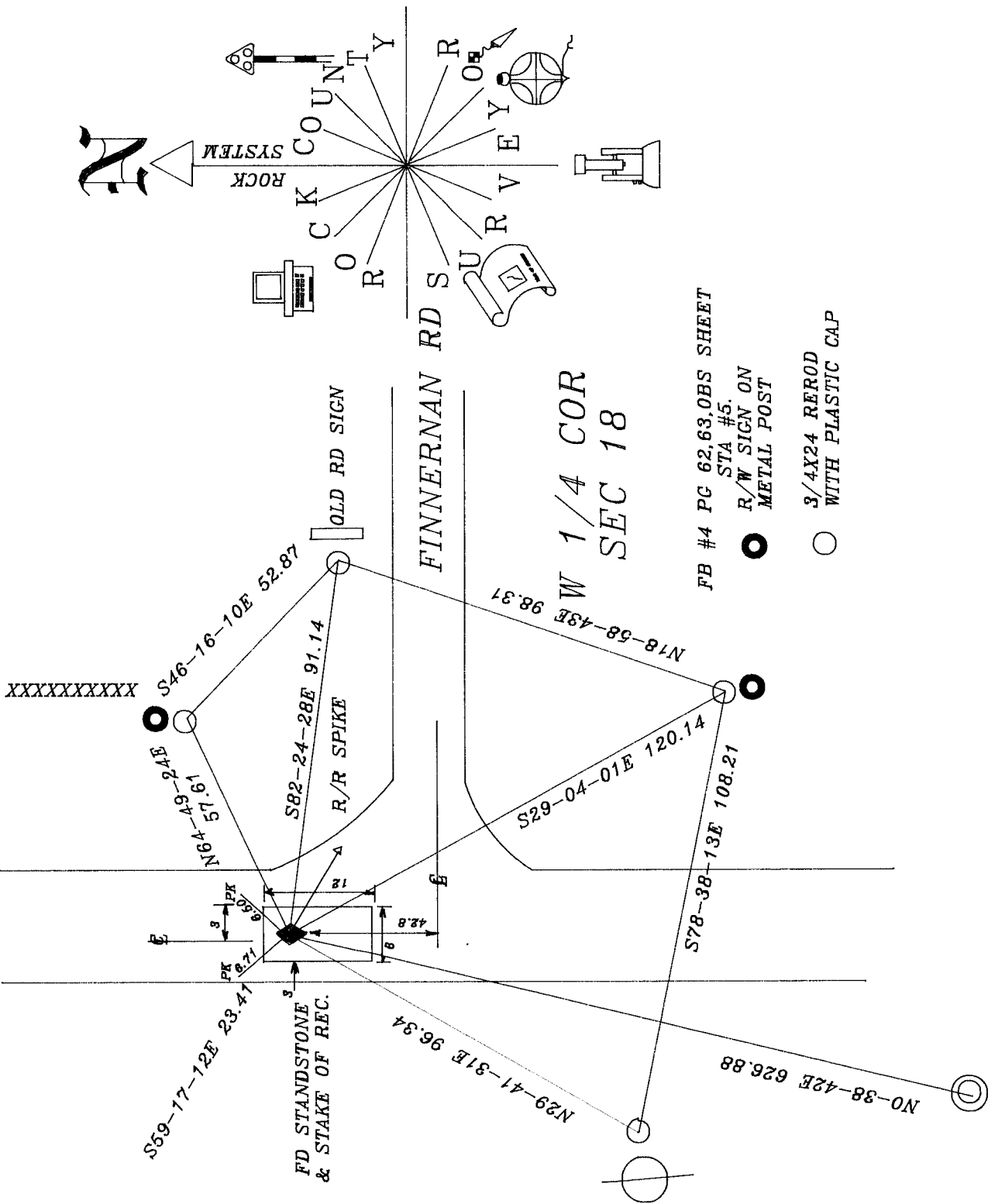
COUNTY SURVEYOR FILING DATA

Date of computer entry _____

Date microfilmed _____

Number of included sheets _____
CORNER CODE

STH 59



FINNERNAN RD S
W 1/4 COR
SEC 18

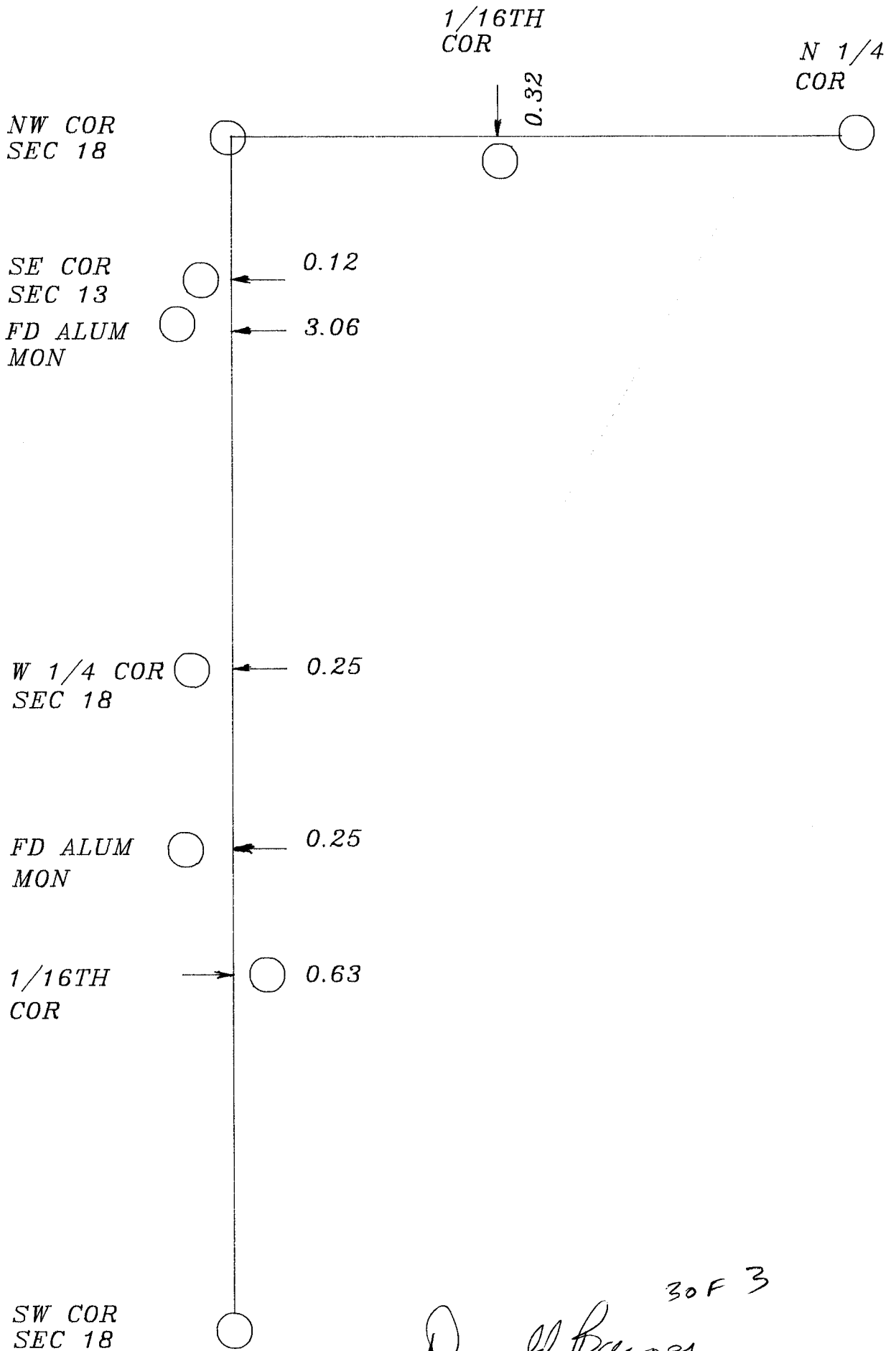
FB #4 PC 62.63, OBS SHEET
STA #5.

● R/W SIGN ON METAL POST

○ 3/4X24 REROD WITH PLASTIC CAP

DISK IN SOUTH
END OF WEST
BRIDGE WALL
11JWS 1960
ELEV. 883.89

A/24/95
Donald
Barnes



30 F 3
 Donald Barnes
 4/24/95