

# PUBLIC LAND SURVEY MONUMENT RECORD

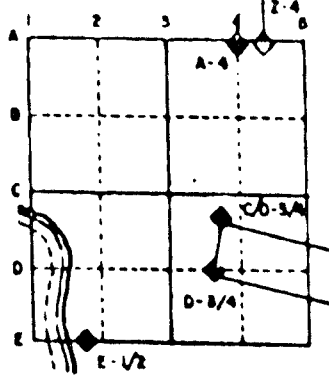
For Public Land Survey Corners in the  
T. 3 N., R. 10 E.

## CORNER CODE INDEX

	1	2	3	4	5	6	7	8	9	10	11	12	13	14	15	16	17	18	19	20	21	22	23	24	25
A																									
B																									
C																									
D																									
E																									
F																									
G																									
H																									
I																									
J																									
K																									
L																									
M																									
N																									
O																									
P																									
Q																									
R																									
S																									
T																									
U																									
V																									
W																									
X																									
Y																									
Z																									

PLACE MONUMENT SYMBOL (◆) AT PROPER  
LOCATION ON ABOVE INDEX

### EXAMPLE



MAGNOLIA TWP  
ROCK COUNTY WI

IF AVAILABLE  
STATE PLANE COORDINATES

North (Y) \_\_\_\_\_ Elev. (Z) \_\_\_\_\_  
 East (X) \_\_\_\_\_ Zone \_\_\_\_\_  
 Hor. Datum \_\_\_\_\_ Vert. Datum \_\_\_\_\_

◆ CORNER MONUMENT

○ WITNESS MONUMENT

BEARINGS ARE BASED ON:

MA541

(B) Describe any record evidence, monument evidence, occupational evidence, testimonial evidence or any other material evidence you considered, and whether the monument was found or placed.

1833 HARRISON INT W. BOUNDARY BURR OAK 18 N51E 270 & BURR OAK 12 S75E 335. CALLS FOR 2704.68 TO N 1/4 COR SEC 18.

1855 CHURCH VOL 1 PG 53 2680.92 TO S 1/4 COR SEC 7 & 2610.96 TO W 1/4 COR SEC 7.

1873 RUGER VOL 2 PG 109 CORNER IS 9.24' NORTH OF E/W BOARD FENCE. FOUND REMAINS OF OLD STAKE. ALSO NE BT THE STUMP OF THE SE BT HAD BEEN DUG UP. DROVE NEW STAKE DEEP & PUT ON TOP OF IT HH STONE 18X13X11 SURROUNDED HH STONES. 2677.02 TO N 1/4 COR SEC 18, 2666.4 TO W 1/4 COR SEC 18 & 1287.66 TO NE COR SEC 24.

1937 SUNNY VOL 3 PG 353 FOUND HH MON. SET BY RUGER. SET 1 1/2X10" PIPE WITH CAP ON TOP FLUSH WITH BLACKTOP PAVEMENT. SET 1 1/2 X30" REFERENCE PIPES 33.00 TO THE EAST & WEST. MAP INDICATES CORNER IS ON LINE WITH E/W FENCE.

DUG AND FOUND OLD ASPHALT PAVEMENT 5.5' BELOW PRESENT PAVEMENT. 11" BELOW OLD PAVEMENT FOUND HH 18X11X12 WITH HH ON SOUTH, EAST, WEST, & NORTH. 4' WEST OF CENTER OF PAVEMENT. FOUND OLD STAKE BELOW HH & 2' BELOW OLD ROAD BED. REPLACED STAKE WITH 3/4X24 REROD AT ORIGINAL DEPTH. WILL INSTALL MONUMENT AFTER HOLE IS REPAIRED.

C) Was the corner restored through acceptance of (1) an obliterated evidence location, or, (2) a found perpetuated location?  
ACCEPTED FOUND HH & STAKE.

D) Describe any material discrepancy between the location of the corner as restored or reestablished and the location of that corner as previously restored or reestablished by distance and direction. Show the discrepancy on the plan view drawing under (a), above. Show the distances between the corner as previously restored or reestablished and (1) the corner as restored or reestablished, and (2) to at least 4 of the witness monuments shown on the drawing in (a), above.

(E) Was the corner reestablished through lost corner proportionate methods? If so, show the method, including the directions and distances to other public land survey corners used as evidence or used for proportioning the corner location.  
NO

I, Donald Barnes, hereby certify that the corner points as identified by the corner code index were, in a field survey on, April 21, 1995, established, re-established, monumented, re-monumented, recovered or restored as expressed below and in conformance with the regulations and rules as required in the current manual of survey instructions of the United States Department of Interior, Bureau of Land Management.

COUNTY SURVEYOR FILING DATA

seal

Date of computer entry \_\_\_\_\_

Date microfilmed \_\_\_\_\_

Number of included sheets \_\_\_\_\_

CORNER CODE

*Donald Barnes*  
4/24/95

EMBOSS LAND SURVEYOR SEAL

J 1

# PUBLIC LAND SURVEY MONUMENT RECORD

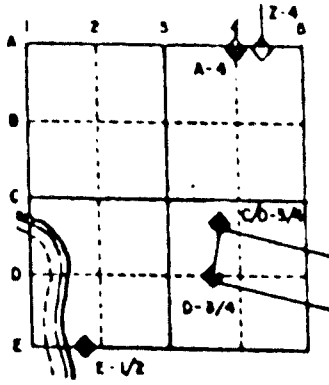
For Public Land Survey Corners in the  
T. 3 N., R. 10 E.

## CORNER CODE INDEX

	1	2	3	4	5	6	7	8	9	10	11	12	13	14	15	16	17	18	19	20	21	22	23	24	25
A																									
B																									
C																									
D																									
E																									
F																									
G																									
H																									
I																									
J																									
K																									
L																									
M																									
N																									
O																									
P																									
Q																									
R																									
S																									
T																									
U																									
V																									
W																									
X																									
Y																									
Z																									

PLACE MONUMENT SYMBOL (●) AT PROPER LOCATION ON ABOVE INDEX

### EXAMPLE



MAGNOLIA TWP  
ROCK COUNTY WI

### IF AVAILABLE STATE PLANE COORDINATES

North (Y) 286,612.73      Elevation (Z) \_\_\_\_\_  
 East (X) 400,409.98      Zone \_\_\_\_\_  
 Hor. Datum \_\_\_\_\_      Vert. Datum \_\_\_\_\_

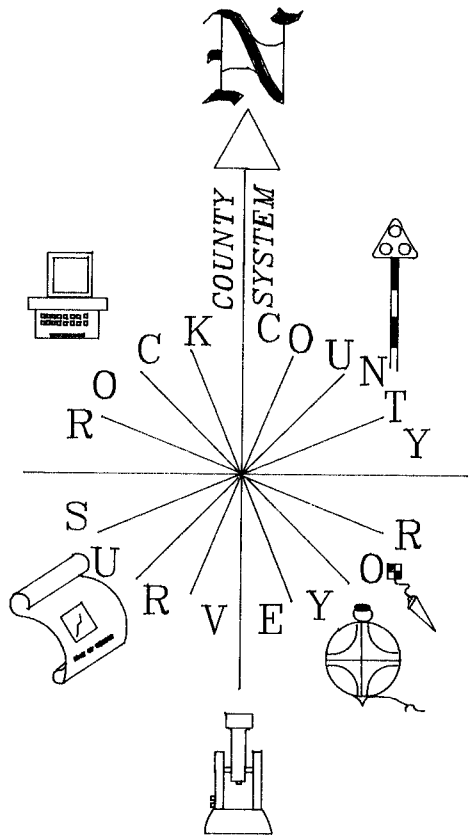
◆ CORNER MONUMENT

○ WITNESS MONUMENT

COORDINATES ARE BASED ON THE ROCK COUNTY PROJECTION SYSTEM, ESTABLISHED BY CONVENTIONAL TRAVERSE FROM GPS "ALBANY" 2015 AND THE AZIMUTH "ALBANY AZIMUTH" 304A WHICH IS IN THE SW 1/4 OF SECTION 7.



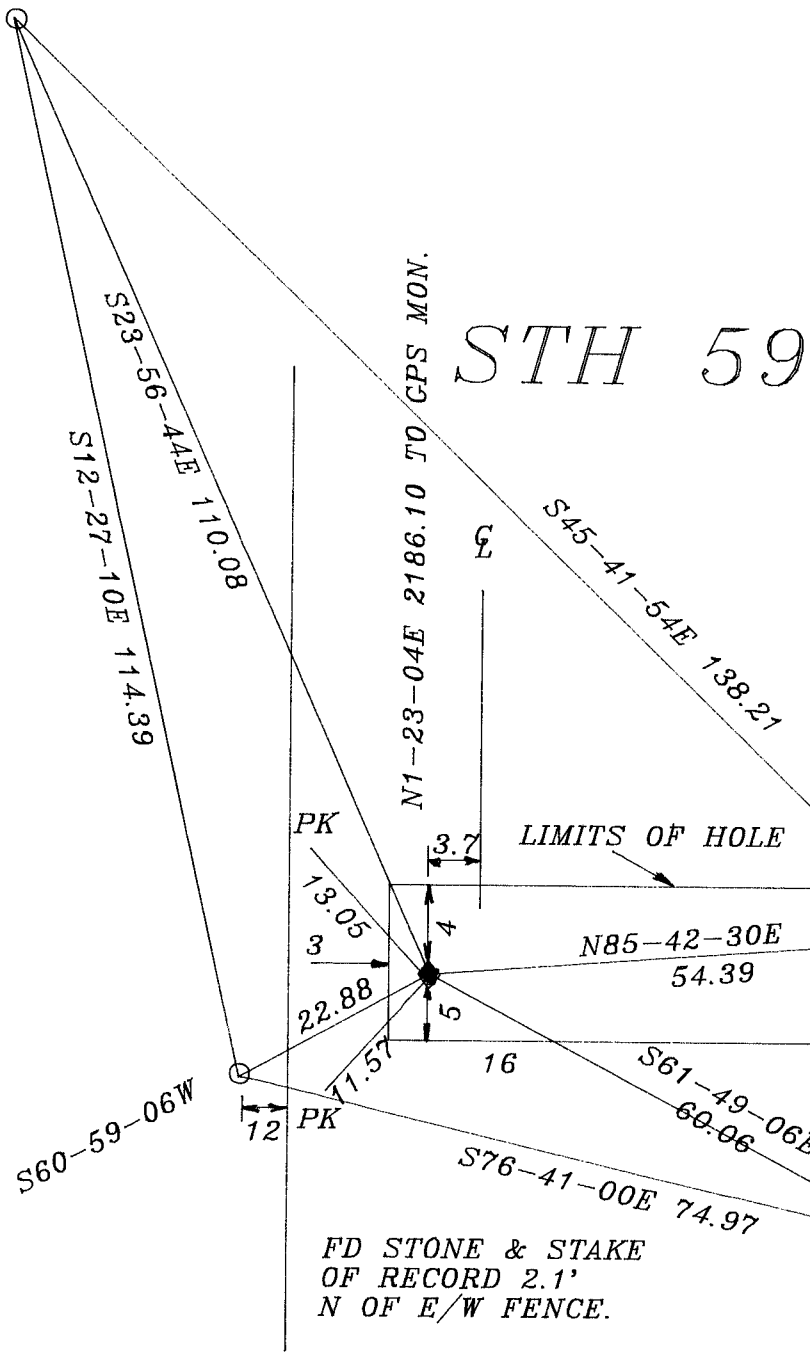
BEARINGS ARE BASED ON:



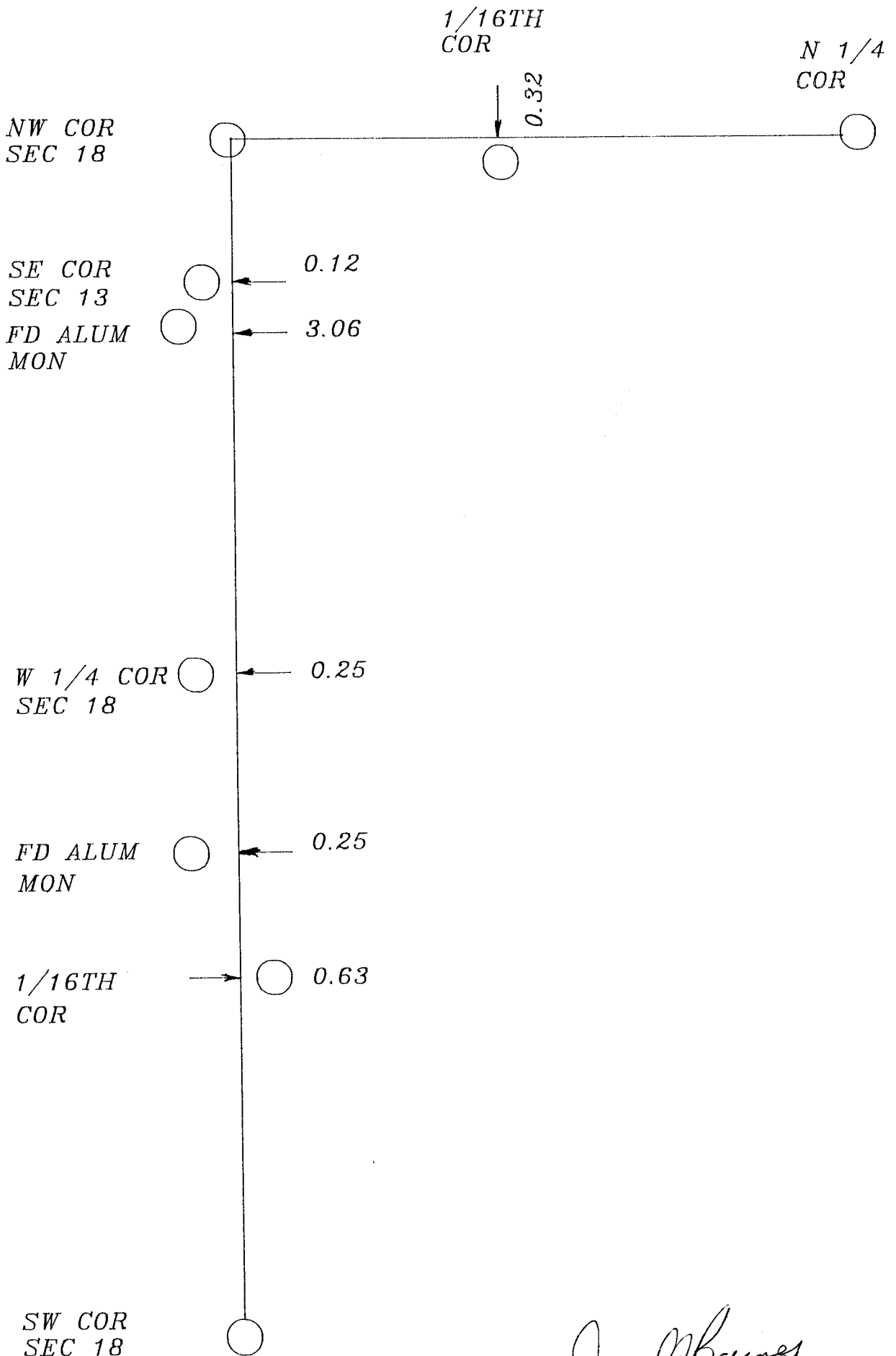
N  
COUNTY SYSTEM  
R O C K C O U N T Y  
S U R V E Y O R  
NW COR  
SEC 18  
FB #4 PG 62,65, OBSERVATION  
SHEET STA# 2

○ 3/4X24 REROD WITH PLASTIC CAP

XXXXXXXXXXXXXXXXXXXXXXXXXXXXXXXXXXXX



4/2A/95  
Ronald Barnes



*Donald Baines*  
*May 4, 1995*