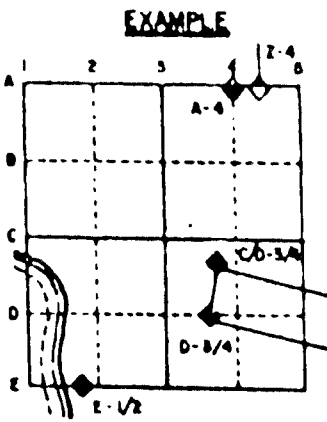


PUBLIC LAND SURVEY MONUMENT RECORD

For Public Land Survey Corners in the
 T. 3 N., R. 9 E
CORNER CODE INDEX

	1	2	3	4	5	6	7	8	9	10	11	12	13	14	15	16	17	18	19	20	21	22	23	24	25	
A																										
B																										
C																										
D																										
E																										
F																										
G																										
H																										
I																										
J																										
K																										
L																										
M																										
N																										
O																										
P																										
Q																										
R																										
S																										
T																										
U																										
V																										
W																										
X																										
Y																										
Z																										



ALBANY TWP
 ROCK COUNTY WI

IF AVAILABLE
 STATE PLANE COORDINATES

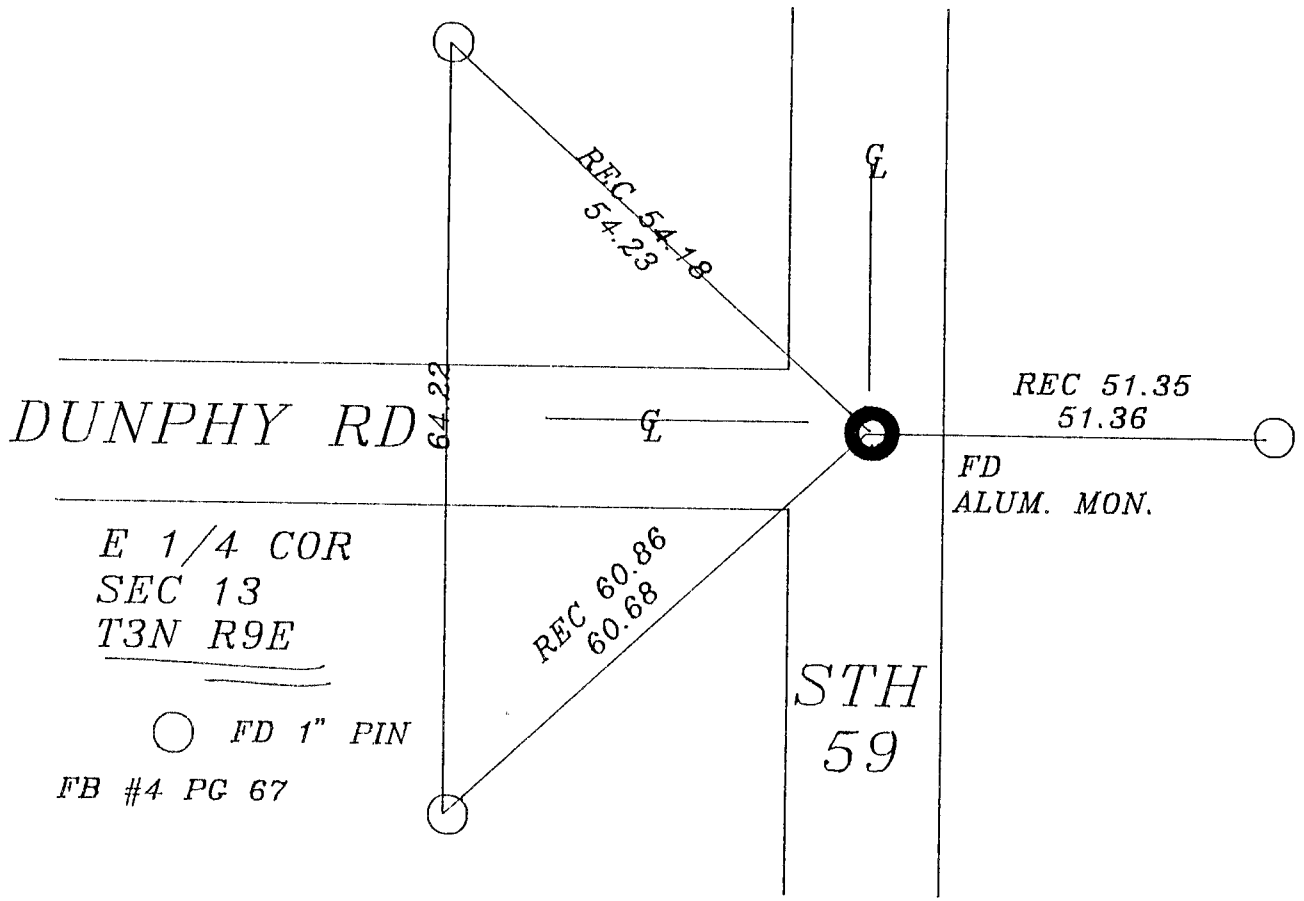
FD
 ALUM MON
 North (Y) 287,953.92 Elevation (Z) _____
 East (X) 400,407.88 Zone _____
 Hor. Datum _____ Vert. Datum _____

PLACE MONUMENT SYMBOL (◊) AT PROPER LOCATION ON ABOVE INDEX

◊ CORNER MONUMENT ○ WITNESS MONUMENT

COORDINATES ARE BASED ON THE ROCK COUNTY PROJECTION SYSTEM, ESTABLISHED BY CONVENTIONAL TRAVERSE FROM GPS "ALBANY" 304S AND THE AZIMUTH "ALBANY AZIMUTH" 301A WHICH IS IN THE SW 1/4 OF SECTION 7.

BEARINGS ARE BASED ON:
 BEARINGS ARE BASED ON:



FILE MAGNOLIA TWP
#1

SHEET OF H1

CORNER CODE INDEX

AL560

(B) Describe any record evidence, monument evidence, occupational evidence, testimonial evidence or any other material evidence you considered, and whether the monument was found or placed.

1833 BRINK SET QUARTER SECTION POST BUR OAK 16 S30W 46 & BUR OAK 15 N49W 96.

1977 TALARCZYK CORNER SET BY PROPORTIONATE MEASUREMENT & EXISTING PHYSICAL EVIDENCE. PLACED ALUM. MON. & REFERENCED SAME. CALLS FOR MONUMENT TO BE AT CENTER OF N/S PVMT. & E/W PVMT.

FOUND PK AT CENTER OF PANELED AIR PHOTO CONTROL. FOUND ALUM. MON. 0.3' DEEP & REFERENCE PIPES.

C) Was the corner restored through acceptance of (1) an obliterated evidence location, or, (2) a found perpetuated location?

DID NOT ACCEPT FOUND ALUM. MON. BECAUSE I ESTABLISHED THE SE CORNER OF SEC 13 IN A DIFFERENT LOCATION THAN TALARCZYK. THE NEW LOCATION WILL AFFECT THE LOCATION OF THE E 1/4 COR SEC 13 SINCE TALARCZYK USED PROPORTIONATE MEASUREMENT. I DID NOT DIG FOR OR ESTABLISH THE E 1/4 COR OF SEC 13.

D) Describe any material discrepancy between the location of the corner as restored or reestablished and the location of that corner as previously restored or reestablished by distance and direction. Show the discrepancy on the plan view drawing under (a), above. Show the distances between the corner as previously restored or reestablished and (1) the corner as restored or reestablished, and (2) to at least 4 of the witness monuments shown on the drawing in (a), above.

(E) Was the corner reestablished through lost corner proportionate methods? If so, show the method, including the directions and distances to other public land survey corners used as evidence or used for proportioning the corner location.

NO

I, Donald Barnes, hereby certify that the corner points as identified by the corner code index were, in a field survey on, APRIL 24, 1995, established, re-established, monumented, re-monumented, recovered or restored as expressed below and in conformance with the regulations and rules as required in the current manual of survey instructions of the United States Department of Interior, Bureau of Land Management.

seal
Donald Barnes
May 4, 1995

EMBOSS LAND SURVEYOR SEAL

COUNTY SURVEYOR FILING DATA

Date of computer entry _____

Date microfilmed _____

Number of included sheets _____

CORNER CODE

~~125~~
H1