

PUBLIC LAND SURVEY MONUMENT RECORD

For Public Land Survey Corners in the

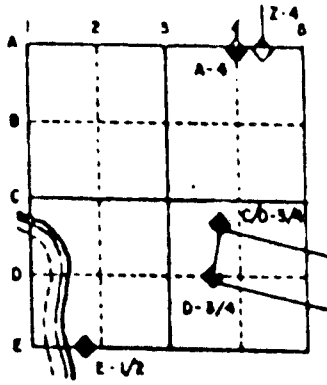
T. 3 N., R. 10 E.

CORNER CODE INDEX

	1	2	3	4	5	6	7	8	9	10	11	12	13	14	15	16	17	18	19	20	21	22	23	24	25
A																									
B																									
C																									
D																									
E																									
F																									
G																									
H																									
I																									
J																									
K																									
L																									
M																									
N																									
O																									
P																									
Q																									
R																									
S																									
T																									
U																									
V																									
W																									
X																									
Y																									
Z																									

PLACE MONUMENT SYMBOL (◆) AT PROPER LOCATION ON ABOVE INDEX

EXAMPLE



MAGNOLIA TWP
ROCK COUNTY WI

IF AVAILABLE
STATE PLANE COORDINATES

North (Y) 281,274,909 Elevation (Z) _____
 East (X) 400,458,121 Zone _____
 Hor. Datum _____ Vert. Datum _____

◆ CORNER MONUMENT

○ WITNESS MONUMENT

COORDINATES ARE BASED ON THE ROCK COUNTY PROJECTION SYSTEM, ESTABLISHED BY CONVENTIONAL TRAVERSE FROM GPS "ALBANY" 304S AND THE AZIMUTH "ALBANY AZIMUTH" 304A WHICH IS IN THE SW 1/4 OF SECTION 7.

BEARINGS ARE BASED ON:

MA561

(B) Describe any record evidence, monument evidence, occupational evidence, testimonial evidence or any other material evidence you considered, and whether the monument was found or placed.

1873 RUGER VOL 2 PG 109 FOUND IRREGULAR HH STONE ON CORNER 21X21X13. ALSO FOUND SE BT & STUMP OF NE BT. 2669.7 TO S 1/4 COR SEC 18, 2666.4 TO W 1/4 COR SEC 18.

1937 SUNNY VOL 3 PG 353 DUG 5X5X4' DEEP HOLE. FOUND NO MONUMENT. SHOWS 1141 NORTH OF E 1/4 COR SEC 24. DUG & FOUND NOTHING AT E 1/4 COR SEC 24.

1978 BARNES VOL 5 PG 421 FORMER COUNTY SURVEYOR DUG & FOUND NOTHING. VOL 3 PG 353. OCCUPATION IS IN HARMONY WITH RECORD DISTANCE TO THE EAST & IN HARMONY WITH OCCUPATION TO SOUTH., SET ALUM. MON., ON LINE WITH E 1/4 & SE CORNERS OF SEC 24. 2' DEEP FOUND OLD ASPHALD ROAD.

1978 BARNES VOL 5 PG 423 2665.77 TO W 1/4 COR SEC 19, 1431.00 TO E 1/4 COR SEC 24 (RUGER 1873 1423.13) & 2581.96 TO N 1/4 COR SEC 19.

FOUND ALUM. MON. DEEP WITH TOP BROKE OFF. PLACED 2-7" & 4-3" ALUM. RISERS ON TOP OF MONUMENT. PLACED MAGNETS BY MONUMENT. MONUMENT IS NOW 0.5' WEST OF CENTER OF PAVEMENT. THIS LOCATION IS IN HARMONY WITH MONUMENTS TO THE NORTH. 1332.02 (REC 1333.20) TO W 1/16th COR OF THE SW 1/4 OF SEC 18.

C) Was the corner restored through acceptance of (1) an obliterated evidence location, or, (2) a found perpetuated location?
ACCEPTED FOUND PERPETUATED LOCATION.

D) Describe any material discrepancy between the location of the corner as restored or reestablished and the location of that corner as previously restored or reestablished by distance and direction. Show the discrepancy on the plan view drawing under (a), above. Show the distances between the corner as previously restored or reestablished and (1) the corner as restored or reestablished, and (2) to at least 4 of the witness monuments shown on the drawing in (a), above.

(E) Was the corner reestablished through lost corner proportionate methods? If so, show the method, including the directions and distances to other public land survey corners used as evidence or used for proportioning the corner location.
NO

I, Donald Barnes, hereby certify that the corner points as identified by the corner code index were, in a field survey on, April 24, 1995, established, re-established, monumented, re-monumented, recovered or restored as expressed below and in conformance with the regulations and rules as required in the current manual of survey instructions of the United States Department of Interior, Bureau of Land Management.

seal

Donald Barnes
May 4, 1995

EMBOSS LAND SURVEYOR SEAL

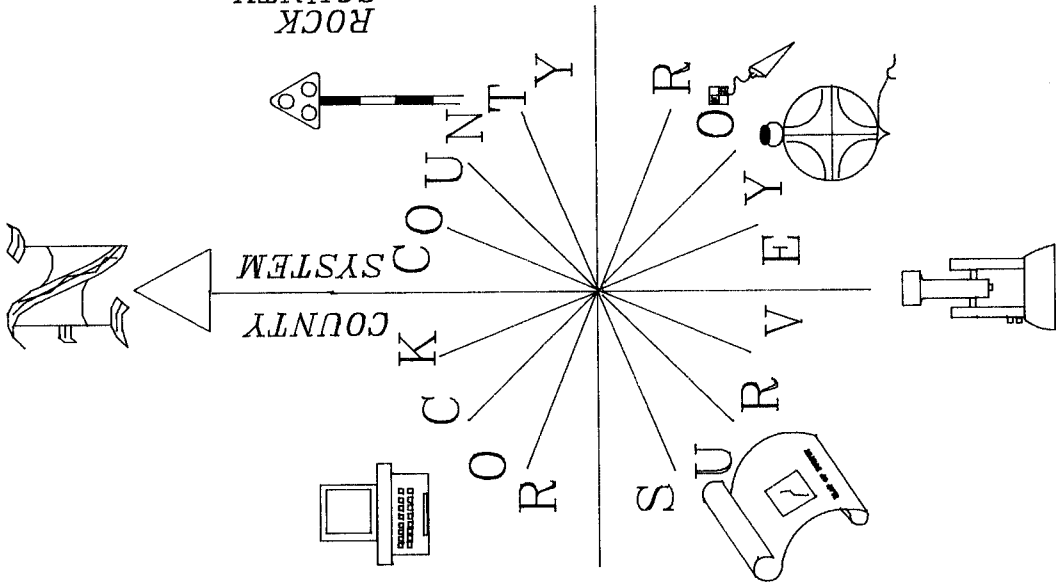
COUNTY SURVEYOR FILING DATA

Date of computer entry _____

Date microfilmed _____

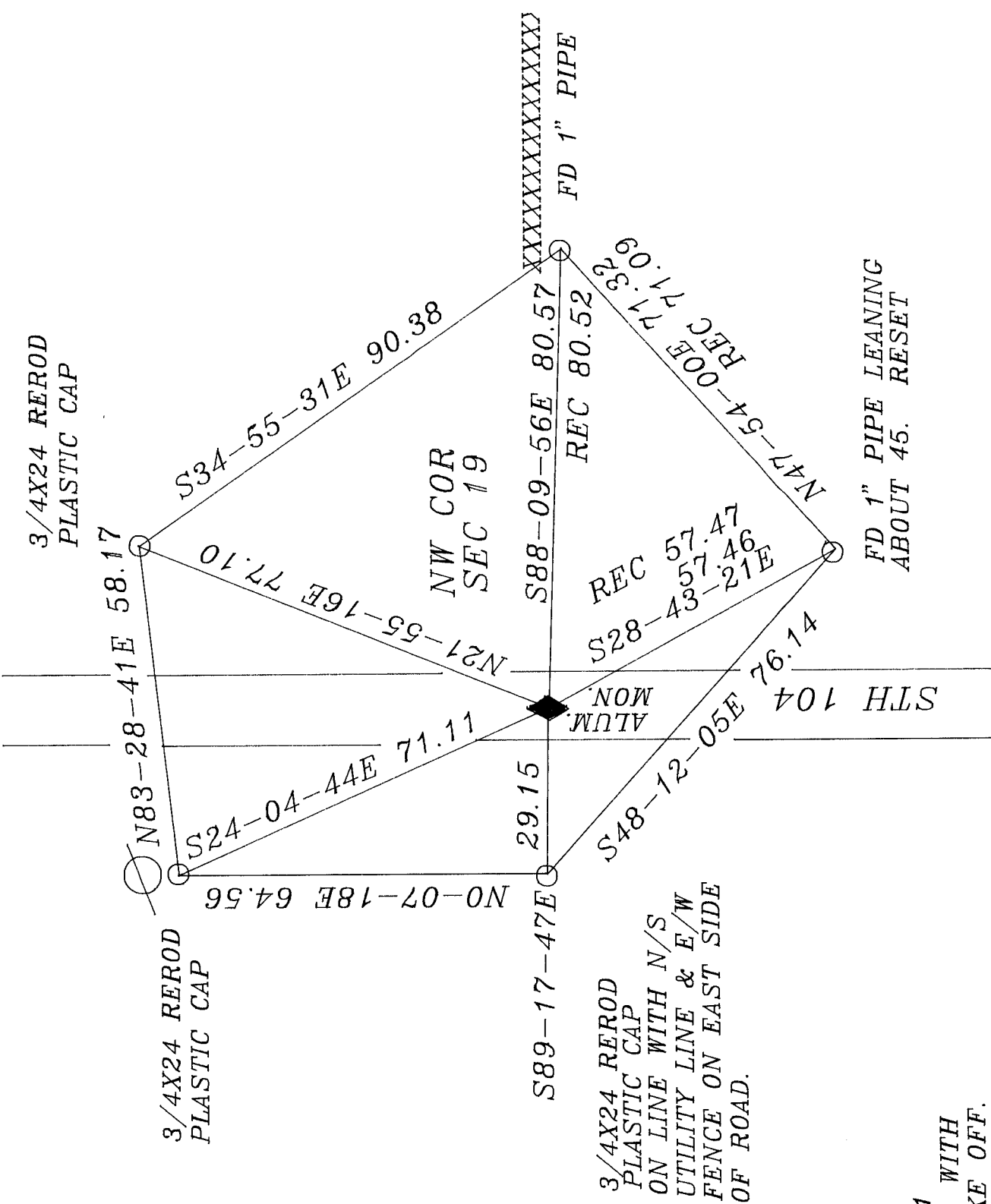
Number of included sheets _____
CORNER CODE

N/

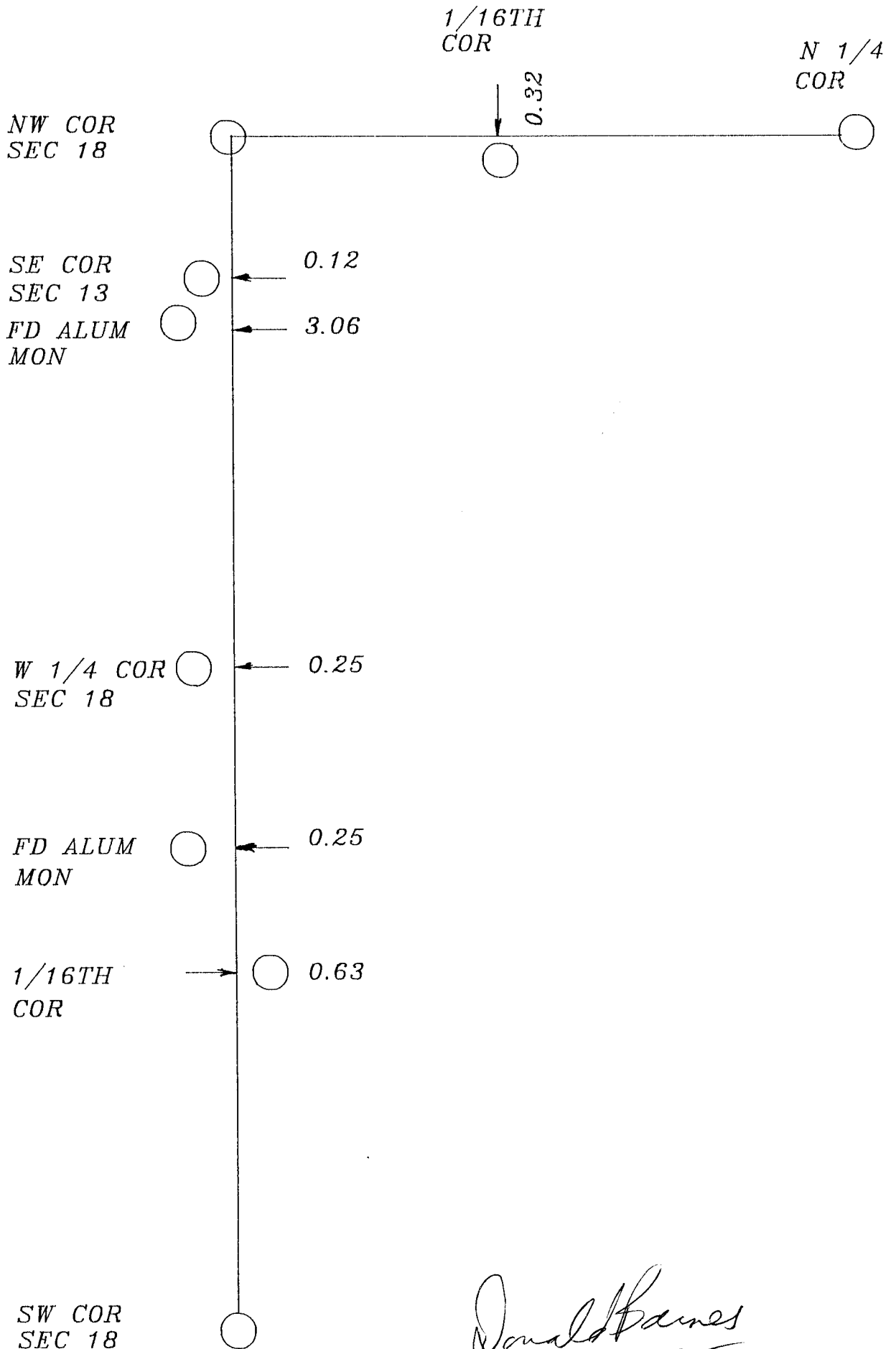


ROCK COUNTY
SURVEY SYSTEM

FB #4 PG 51
 FOUND ALUM. MON. WITH
 TOP PORTION BROKE OFF.
 PLACED 2-7" & 4-3" RISERS
 ON TOP OF MONUMENT. PLACED
 MAGNETS BY MONUMENT.
 MONUMENT IS NOW 0.5' WEST OF
 CENTER OF PVMT.



Donald Barnes
 May 4 1995



Donald Barnes
May 4 1995

N1