

U.S. PUBLIC LAND SURVEY MONUMENT RECORD

For Public Land Survey Corners in:

WI ADMINISTRATIVE CODE A-E 7.08 REQUIREMENT

T. 3 N., R. 9 E

CORNER CODE INDEX

1	2	3	4	5	6	7	8	9	10	11	12	13	14	15	16	17	18	19	20	21	22	23	24	25
A																								
B																								
C	6					5				A				3				2					1	
D																								
E																								
F																								
G	1					8				9				10				11				12		
H																								
J																								
K																								
L	18					17				16				15				14				13		
M																								
N																								
O																								
P	19					20				21				22				23				24		
Q																								
R																								
S	30					29				28				27				26				25		
T																								
U																								
V																								
W																								
X	31					32				33				34				35				36		
Y																								
Z																								

Albany TWP
 -ROCK COUNTY WI
 Green IF AVAILABLE
 ROCK COUNTY COORDINATES PREFERRED

North _____ Elev. _____

East _____

Hor. Datum _____ Vert. Datum _____

LATITUDE _____ ELLIPS. HT. _____

LONGITUDE _____

GPS (X) _____ TRAVERSE (X) _____

BASED ON THE FOLLOWING CONTROL:

PLACE MONUMENT SYMBOL AT PROPER LOCATION ON ABOVE INDEX

CORNER MONUMENT

WITNESS MONUMENT

(a)

KHADER ABU AL-EIS WITH THE WISCONSIN DEPARTMENT OF TRANSPORTATION WAS THE PROJECT ENGINEER FOR THE STH 104 PROJECT. HE REVISED EXISTING TIE SHEETS OF GREEN COUNTY'S PLSS CORNERS AND SENT THEM TO THE ROCK COUNTY SURVEYOR. THE REVISED SHEET IS TAPED TO THE BACK SIDE.

AUGUST 13, 1996

DONALD BARNES, ROCK COUNTY SURVEYOR

BEARINGS ARE BASED ON:

FIELD BOOK _____ PAGE # _____

SHEET _____ OF _____

SHOW A PLAN VIEW DRAWING DEPICTING THE CORNER MONUMENT AND SURROUNDING PHYSICAL FEATURES, INCLUDING THE EXCAVATION AREA AND DEPTH.

PLANNING & ZONING COMMITTEE ADOPTED THE ABOVE FORM ON 12/2/1982

CORNER CODE Q-001

Filed: Magnolia Twp., Rock County

SECTION CORNER TIES

TO THE EAST 1/4 CORNER OF SECTION 25, TOWN 3 NORTH, RANGE 9 EAST, GREEN COUNTY, WISCONSIN.

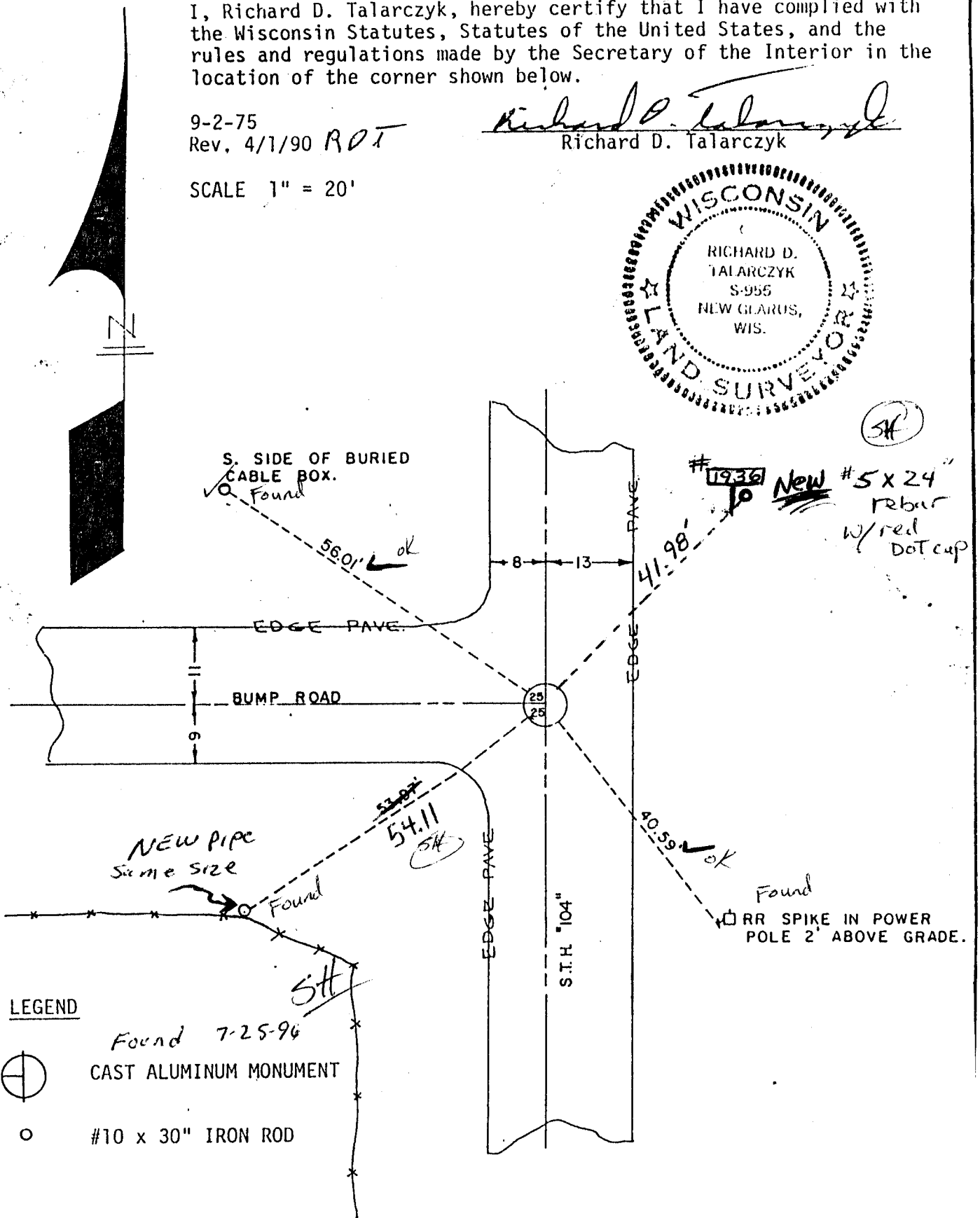
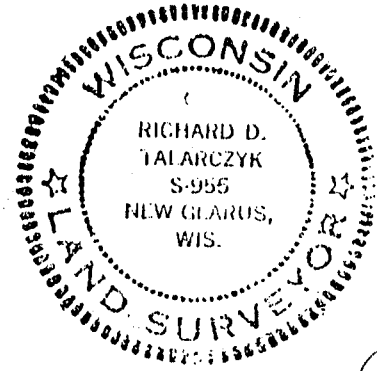
NOTE: TOP OF MONUMENT 4" BELOW GRADE

I, Richard D. Talarczyk, hereby certify that I have complied with the Wisconsin Statutes, Statutes of the United States, and the rules and regulations made by the Secretary of the Interior in the location of the corner shown below.

9-2-75
Rev. 4/1/90 *ROT*

Richard D. Talarczyk
Richard D. Talarczyk

SCALE 1" = 20'



2-100

DRAWN BY <i>QSR</i>	DICK TALARCZYK
CHECKED <i>NV</i>	LAND SURVEYING
JOB NO.	<i>RT. 1</i>
BOOK PAGE	<i>NEW GLARUS, WISC. 53574</i>
	<i>PHONE (608) 527-2540</i>

Q-001