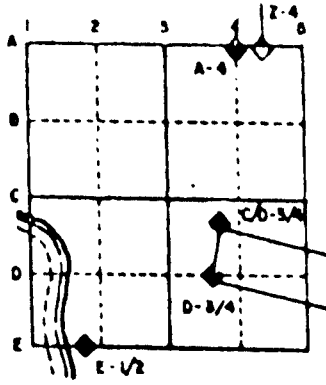


U.S. PUBLIC LAND SURVEY MONUMENT RECORD

For Public Land Survey Corners in the
 T. ___ N., R. ___ E
CORNER CODE INDEX

	1	2	3	4	5	6	7	8	9	10	11	12	13	14	15	16	17	18	19	20	21	22	23	24	25
A																									
B																									
C																									
D																									
E																									

EXAMPLE



Albany TWP
 ROCK COUNTY WI

IF AVAILABLE
 STATE PLANE COORDINATES

North (Y) 285,323.69 Elevation (Z) _____

East (X) 400,421.49 Zone _____

Hor. Datum _____ Vert. Datum _____

PLACE MONUMENT SYMBOL (◆) AT PROPER LOCATION ON ABOVE INDEX
 Fd ALUM MON

285,316.37
400,418.62

◆ CORNER MONUMENT

○ WITNESS MONUMENT

File in MAGNOLIA TWP
 K1

BEARINGS ARE BASED ON:

AL573

(B) Describe any record evidence, monument evidence, occupational evidence, testimonial evidence or any other material evidence you considered, and whether the monument was found or placed.

- 1833 (SEP) BRINK SET POST CORNER SECTIONS 13 & 24. WHITE OAK 12 S73W 201.96' & BLACK OAK 4 N40W 67.32'.
- 1833 (DEC) HARRISON INT. E BOUNDARY 124.08' NORTH OF POST 2613.27 TO S 1/4 COR SEC 13.
- 1873 RUGER VOL 2 PG 109 FOUND REMAINS OF OLD STAKE ALSO NW BEARING TREE & REMAINS OF STUMP AT SW BT DROVE NEW STAKE DEEP & PUT ON TOP OF IT SAND STONE 17X12X7 CALLS FOR THE CORNER TO BE NORTH 45.54' OF THE W 1/16 TH CORNER OF THE NW 1/4 OF SEC 18.
- 1937 SUNNY VOL 3 PG 353 SHOWS STONE MOUND NEAR CORNER. DID NOT DIG OR STATE ANYTHING ABOUT CORNER.
- 1977 TALARCZYK CORNER SET BY PROPORTIONATE MEASUREMENT & EXISTING PHYSICAL EVIDENCE. SET ALUM. MONUMENT. REFERENCED SAME.

FOUND ALUM. MON. 0.3' DEEP AT CENTER OF PAVEMENT. DID NOT ACCEPT ALUM. MON. EXCAVATION AT W 1/16th COR OF THE NW 1/4 & TERRAIN INDICATES THAT THE SE CORNER WAS DESTROYED BY ROAD CONSTRUCTION. THE AREA HAS A SEVERE CUT FOR THE ROAD. ESTABLISHED THE SE CORNER AT RUGER'S RECORD DISTANCE FROM THE W 1/16TH CORNER OF THE NW 1/4 AND ON LINE WITH THE W 1/4 AND THE NW CORNERS OF SECTION 18.

C) Was the corner restored through acceptance of (1) an obliterated evidence location, or, (2) a found perpetuated location?
CORNER WAS RESTORED THROUGH ACCEPTANCE OF OBLITERATED EVIDENCE LOCATION.

D) Describe any material discrepancy between the location of the corner as restored or reestablished and the location of that corner as previously restored or reestablished by distance and direction. Show the discrepancy on the plan view drawing under (a), above. Show the distances between the corner as previously restored or reestablished and (1) the corner as restored or reestablished, and (2) to at least 4 of the witness monuments shown on the drawing in (a), above.

(E) Was the corner reestablished through lost corner proportionate methods? If so, show the method, including the directions and distances to other public land survey corners used as evidence or used for proportioning the corner location.
NO

I, Donald Barnes, hereby certify that the corner points as identified by the corner code index were, in a field survey on, APRIL 24, 1995, established, re-established, monumented, re-monumented, recovered or restored as expressed below and in conformance with the regulations and rules as required in the current manual of survey instructions of the United States Department of Interior, Bureau of Land Management.

Donald Barnes
seal
May 4, 1995

COUNTY SURVEYOR FILING DATA
Date of computer entry _____
Date microfilmed _____
Number of included sheets _____
CORNER CODE

EMBOSS LAND SURVEYOR SEAL

k-1
1995

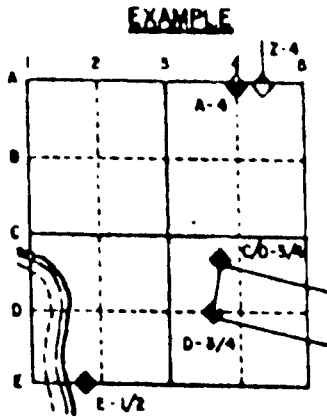
U.S. PUBLIC LAND SURVEY MONUMENT RECORD

For Public Land Survey Corners in the

T. 3 N., R. 13 E.

CORNER CODE INDEX

	1	2	3	4	5	6	7	8	9	10	11	12	13	14	15	16	17	18	19	20	21	22	23	24	25
A																									
B																									
C																									
D																									
E																									
F																									
G																									
H																									
I																									
J																									
K																									
L																									
M																									
N																									
O																									
P																									
Q																									
R																									
S																									
T																									
U																									
V																									
W																									
X																									
Y																									
Z																									



MAGNOLIA
ALBANY
MAGNOLIA TWP
ROCK COUNTY WI

IF AVAILABLE
STATE PLANE COORDINATES

1/16 TA COR
North (Y) 285,278.15 Elev. (Z) _____
East (X) 400,421.89 Zone _____
Hor. Datum _____ Vert. Datum _____

PLACE MONUMENT SYMBOL (◆) AT PROPER LOCATION ON ABOVE INDEX

FD ALUM 285,316.37 SE COR 285,323.69
400,418.62 SEC 13 400,421.49

◆ CORNER MONUMENT ○ WITNESS MONUMENT

COORDINATES ARE BASED ON THE ROCK COUNTY PROJECTION SYSTEM. ESTABLISHED BY CONVENTIONAL TRAVERSE FROM GPS "ALBANY" 304S AND THE AZIMUTH "ALBANY AZIMUTH" 304A WHICH IS IN THE SW 1/4 OF SECTION 7.

BEARINGS ARE BASED ON:

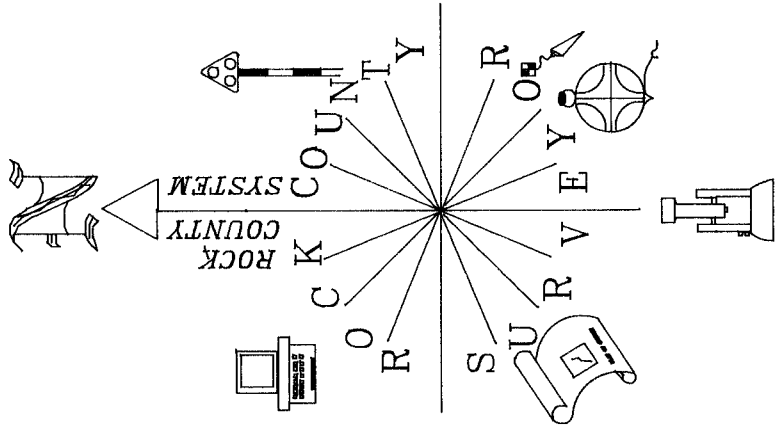
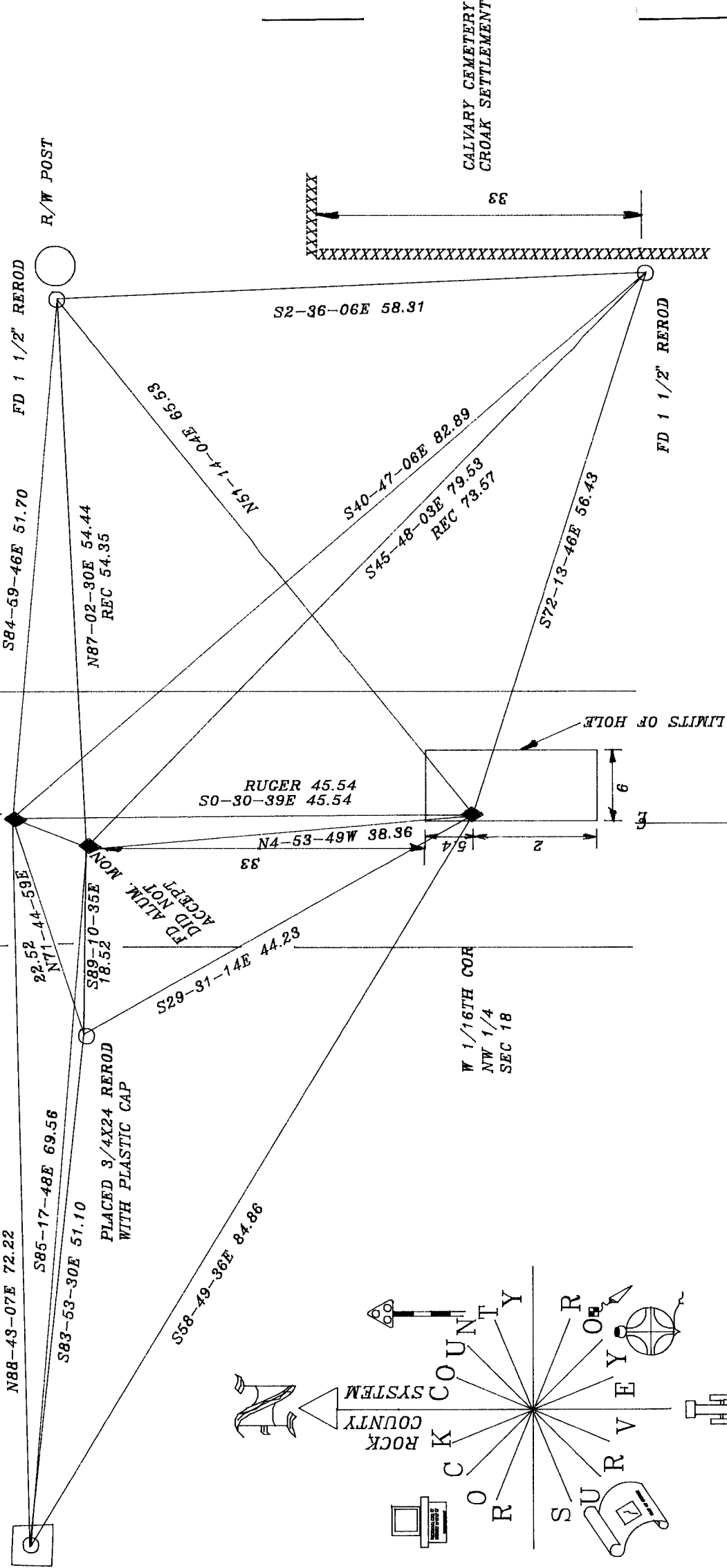
AT SE COR SEC 13 RUGER FD REMAINS OF OLD STAKE
 ALSO NW BT & REMAINS OF STUMP OF SWBT. DROVE
 NEW STAKE DEEP & PUT ON TOP OF IT SANDSTONE 17X12X7.

STH 59

PLACED 3/4X24 REROD
 WITH PLASTIC CAP

HSE SICN
 HSE #N6099

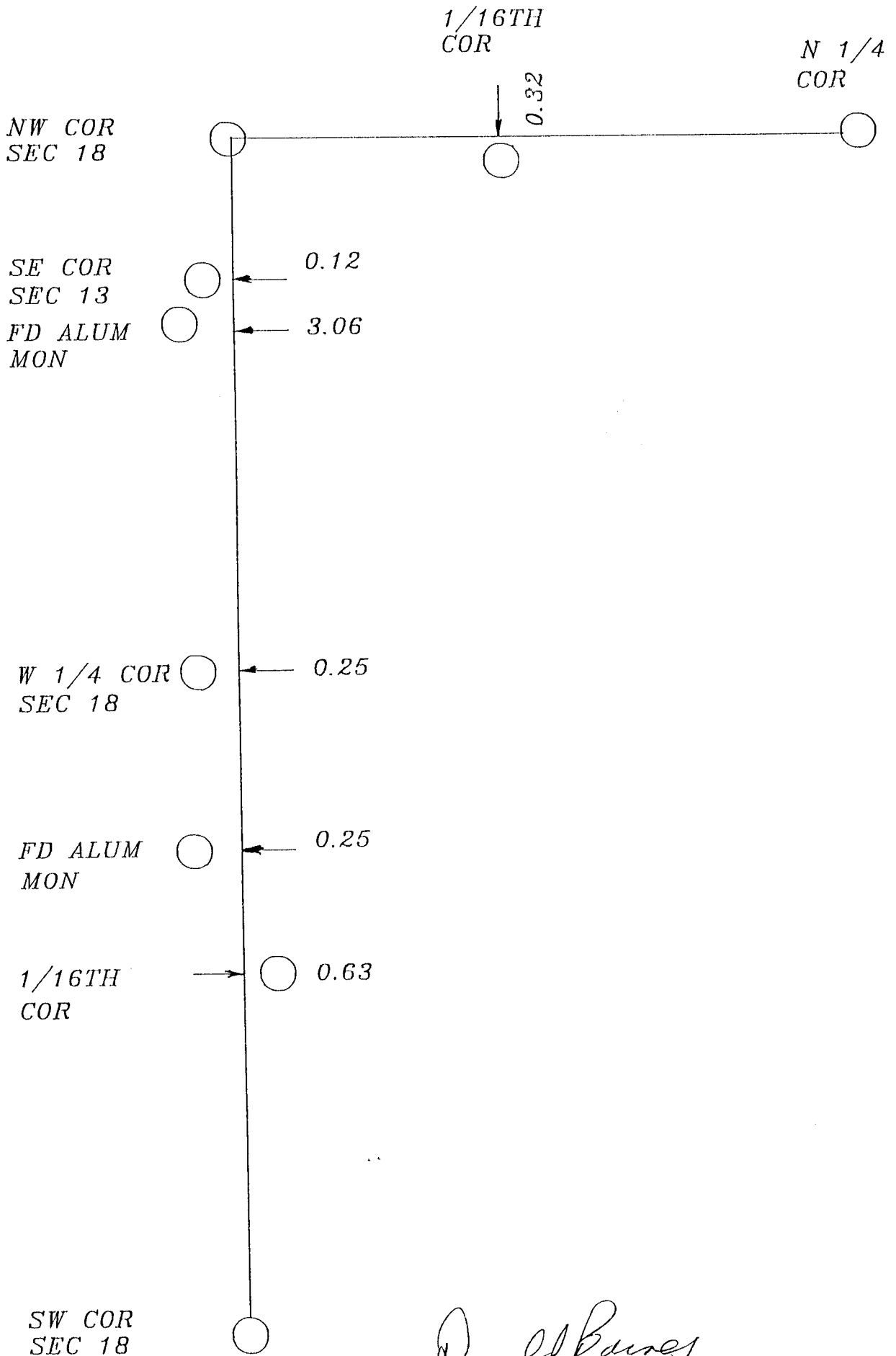
SE COR
 SEC 13
 T3N R9E



BK #4 PG 66 &
 OBS. SHEET STA #3
 FILE "MA2573"

Donald Barnes
 May 4 1995

K-1
 47 N-5



Donald Barnes
May 4, 1995

K1
~~125~~