

PUBLIC LAND SURVEY MONUMENT RECORD

For Public Land Survey Corners in the

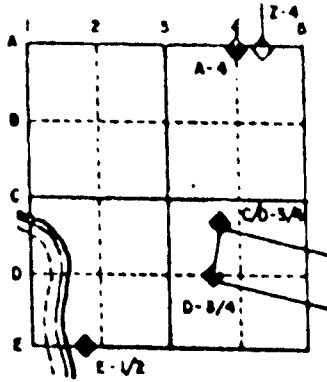
T. 3 N., R. 10 E

CORNER CODE INDEX

	1	2	3	4	5	6	7	8	9	10	11	12	13	14	15	16	17	18	19	20	21	22	23	24	25
A																									
B																									
C																									
D																									
E																									
F																									
G																									
H																									
I																									
J																									
K																									
L																									
M																									
N																									
O																									
P																									
Q																									
R																									
S																									
T																									
U																									
V																									
W																									
X																									
Y																									
Z																									

PLACE MONUMENT SYMBOL (◊) AT PROPER LOCATION ON ABOVE INDEX

EXAMPLE



MAGNOLIA TWP
ROCK COUNTY WI

IF AVAILABLE
STATE PLANE COORDINATES

North (Y) _____ Eleve. (Z) _____
 East (X) _____ Zone _____
 Hor. Datum _____ Vert. Datum _____

◊ CORNER MONUMENT

○ WITNESS MONUMENT

COORDINATES ARE BASED ON THE ROCK COUNTY PROJECTION SYSTEM, ESTABLISHED BY CONVENTIONAL TRAVERSE FROM GPS "ALBANY" 301S AND THE AZIMUTH "ALBANY AZIMUTH" 301A WHICH IS IN THE SW 1/4 OF SECTION 7.



BEARINGS ARE BASED ON:

ma534

(B) Describe any record evidence, monument evidence, occupational evidence, testimonial evidence or any other material evidence you considered, and whether the monument was found or placed.

1855 CHURCH VOL 1 PG 53 5323.69 TO E 1/4 COR SEC 7, 2610.96 TO NW COR SEC 7, & 2610.96 TO SE COR SEC 7.

1937 SUNNY VOL 3 PG 353 THIS CORNER IS NOT IN BLACKTOP. 2621.4 TO SW COR SEC 7.

1966 BATTERMAN VOL 4 PG 282 SHOWS TIES BUT STATES NOTHING ABOUT CORNER.

FOUND PK THAT IS IN HARMONY WITH 2 REFERENCE PIPES. 2624.40 TO NW CORNER OF SEC 18.

C) Was the corner restored through acceptance of (1) an obliterated evidence location, or, (2) a found perpetuated location?

ACCEPTED FOUND PK.

D) Describe any material discrepancy between the location of the corner as restored or reestablished and the location of that corner as previously restored or reestablished by distance and direction. Show the discrepancy on the plan view drawing under (a), above. Show the distances between the corner as previously restored or reestablished and (1) the corner as restored or reestablished, and (2) to at least 4 of the witness monuments shown on the drawing in (a), above.

(E) Was the corner reestablished through lost corner proportionate methods? If so, show the method, including the directions and distances to other public land survey corners used as evidence or used for proportioning the corner location.

NO

I, Donald Barnes, hereby certify that the corner points as identified by the corner code index were, in a field survey on, APRIL 24, 1995, established, re-established, monumented, re-monumented, recovered or restored as expressed below and in conformance with the regulations and rules as required in the current manual of survey instructions of the United States Department of Interior, Bureau of Land Management.

seal

Donald Barnes
May 4 1995

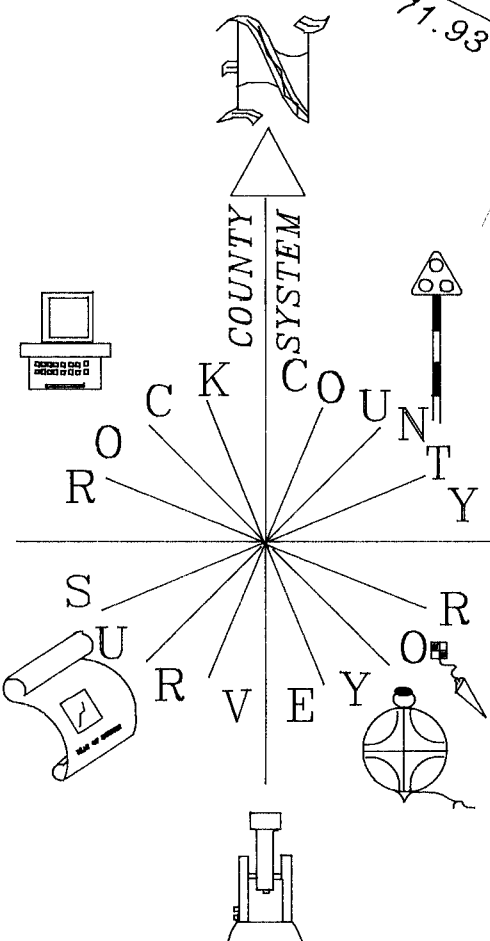
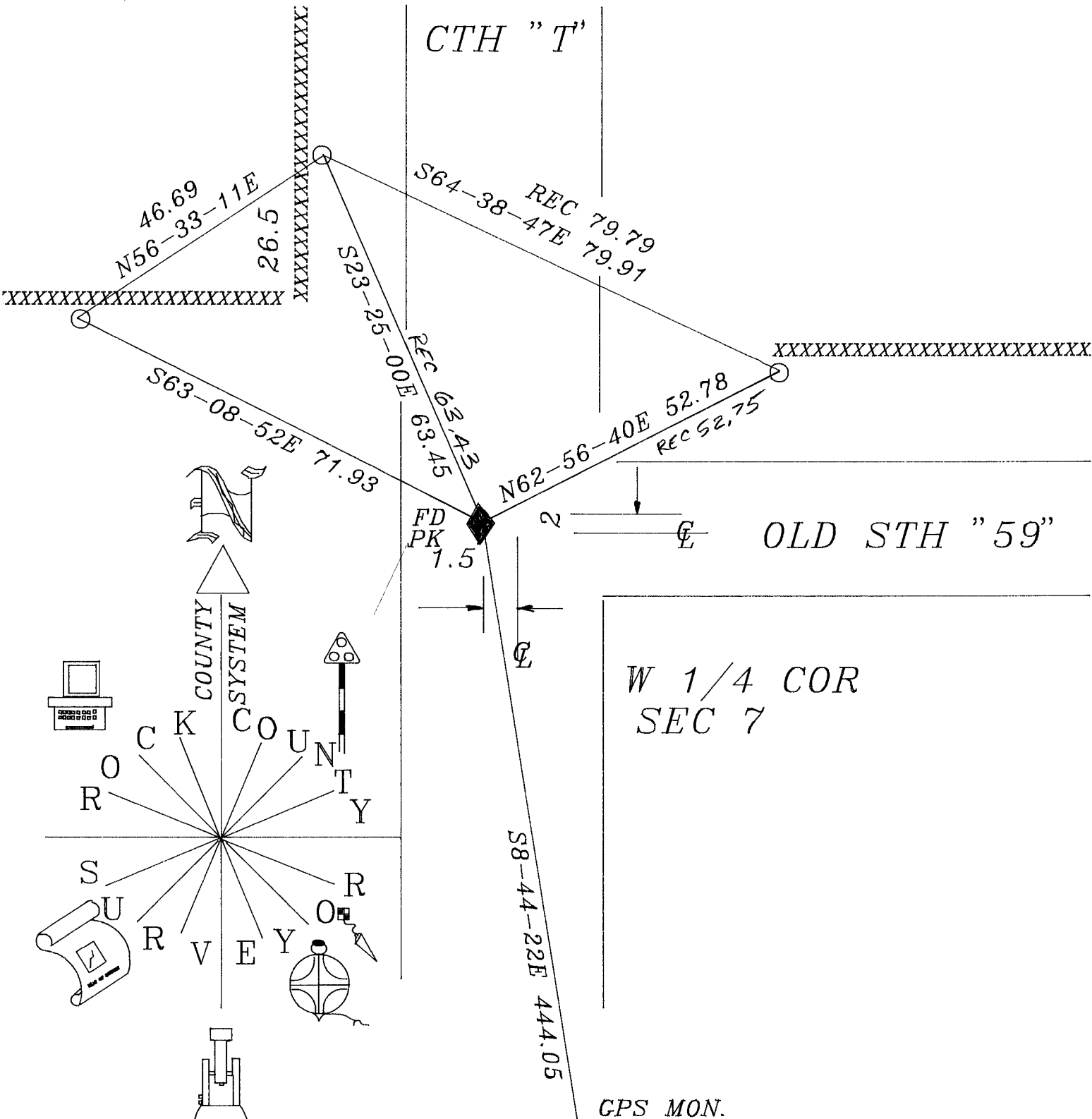
EMBOSS LAND SURVEYOR SEAL

COUNTY SURVEYOR FILING DATA

Date of computer entry _____

Date microfilmed _____

Number of included sheets 1 of 2
CORNER CODE



FB #4 PG 66

○ 3/4X24 REROD WITH PLASTIC CAP

Donald Barnes
May 4 1995