

U.S. PUBLIC LAND SURVEY MONUMENT RECORD

For Public Land Survey Corners in:

WI ADMINISTRATIVE CODE A-E 7.08 REQUIREMENT

T. 5 N., R. 13 E

KOSHKONONG

CORNER CODE INDEX

File in MILTON TWP

ROCK COUNTY WI

IF AVAILABLE
ROCK COUNTY COORDINATES PREFERRED

A	1	2	3	4	5	6	7	8	9	10	11	12	13	14	15	16	17	18	19	20	21	22	23	24	25	
B																										
C	6																									
D																										
E																										
F	1																									
G		8																								
H																										
J																										
K	18																									
L		11																								
M																										
N																										
O																										
P	19																									
Q		20																								
R																										
S																										
T	30																									
U		29																								
V																										
W																										
X	31																									
Y		32																								
Z																										

PLACE MONUMENT SYMBOL \blacklozenge AT PROPER LOCATION ON ABOVE INDEX

North _____ Elev. _____

East _____

Hor. Datum _____ Vert. Datum _____

LATITUDE _____ ELLIPS. HT. _____

LONGITUDE _____

GPS (X) _____ TRAVERSE (X) _____

BASED ON THE FOLLOWING CONTROL:

\blacklozenge CORNER MONUMENT

\circ WITNESS MONUMENT

(a)

THOMAS WOLLIN, JEFFERSON COUNTY SURVEYOR, PROVIDED THE STATE PLANE COORDINATES FOR CORNER CODE #8501 CORSE33 SEC T5N R13E

STATE PLANE COORDINATES N/S 310, 141, 276
NAD 1983/91 OF RECORD E/W 2, 249, 027, 093

I DONALD BARNES CONVERTED THE ABOVE COORDINATES TO THE FOLLOWING:

LATITUDE 42-50-45.98586
LONGITUDE 88-57-14.20408
MERIDIAN CONV. 0-43-07.5
SCALE FACTOR 0.9999791728

ROCK COUNTY COORDINATES (NAD 1983/91)
N/S 328, 633, 668
E/W 511, 721, 565
SCALE 0.9999971495
CONVERGENCE: THE ANGULAR DIFFERENCE BETWEEN THE GEODETIC NORTH & THE ROCK COUNTY MERCATOR NORTH

\oplus DEG 0 MIN 04 SEC 49.6

Donald Barnes
2-12-03

FIELD BOOK _____ PAGE # _____

SHEET 1 OF 1

SHOW A PLAN VIEW DRAWING DEPICTING THE CORNER MONUMENT AND SURROUNDING PHYSICAL FEATURES, INCLUDING THE EXCAVATION AREA AND DEPTH.

PLANNING & ZONING COMMITTEE ADOPTED THE ABOVE FORM ON 12/2/1982

File in MILTON TWP

CORNER CODE A-13/14

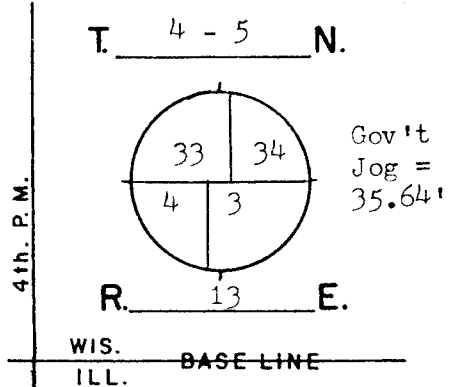
BEARINGS ARE BASED ON:

GOVERNMENT LAND CORNER RECORD

JEFFERSON COUNTY

CORNER NO. 8501

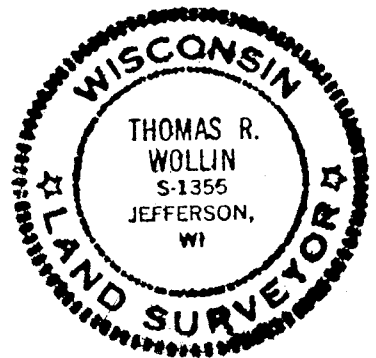
TYPE OF MONUMENT Aluminum & Stone
 STATE PLANE COORDINATES N. 310141.276 SW-34
NAD 1983/91 E. 2249027.093
 ELEVATION M.S.L. DATUM: _____
Grid-Ground 1.0000531308
 FIELD BOOK Koshkonong p. 141
 DRAWN BY TRW



BASIS FOR MONUMENTATION

Original Survey, 1834-37, Wood Post & Bearing Trees
 1871, Resurvey of Milton Township, Limestone Monuments were set. Ref. Rock County Surveyors Office.
 1886, Resurvey of Koshkonong Township, Limestone Monuments were set. Notes recorded in the Register of Deeds, Misc. Vol. 1, pages 389-412.
 1979, Stone monument for Koshkonong Township was found and replaced by an Aluminum Magnetized Monument. A 6" diameter wood post was set on the Eastside and extends about 4' out of ground. Corner was dug for and found by Rock County Surveyor.
 1994, Stone monument for Milton Township was found 34.40' West of Koshkonong Corner. Magnets were placed around the stone. The stone is about 1' below field surface. Ref. Rock County Surveyor.
 2/08/2002, Set G.P.S. coordinates on SW-34, using a Topcon Single-Frequency GP-SX1 receiver.

SEAL:



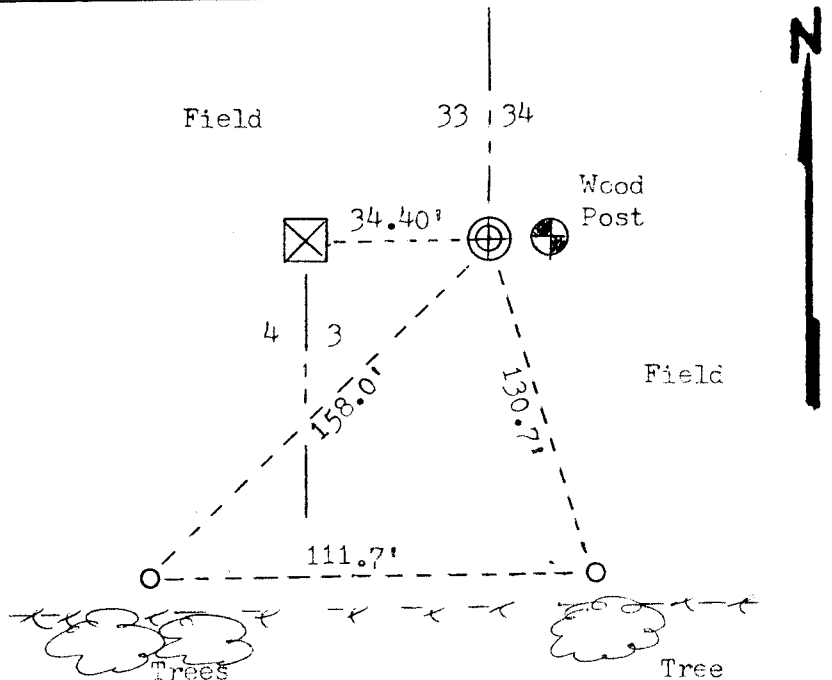
DATA SHOWN HERE ON CERTIFIED CORRECT:

Thomas R. Wollin
 REGISTERED LAND SURVEYOR

DATED 2/19/2002

LOCATION SKETCH

- SQUARE CUT LIMESTONE 5" by 36"
- CONCRETE / BRASS CAP
- ALUMINUM MAGNETIZED 4" by 50"
- IRON PIPE 1" by 24"
- STEEL "T" BAR STAKE
- PK NAIL
- FENCE
- UTILITY POLE
- STEEL POST / SIGN



MAINTENANCE RECORD

DATE	INIT.	REMARKS

A 13/14