

U.S. PUBLIC LAND SURVEY MONUMENT RECORD

For Public Land Survey Corners In:

WI ADMINISTRATIVE CODE A-E 7.08 REQUIREMENT

T. 2 N. R. 11 E.

CORNER CODE INDEX

A	1	2	3	4	5	6	7	8	9	10	11	12	13	14	15	16	17	18	19	20	21	22	23	24	25	A
B			6			5				4				3				2				1				B
C																										C
D																										D
E																										E
F																										F
G			7			8				9				10				11				12				G
H																										H
J																										J
K			18			17				16				15				14				13				K
L																										L
M																										M
N																										N
O			19			20				21				22				23				24				O
P																										P
Q																										Q
R																										R
S			30			29				28				27				26				25				S
T																										T
U																										U
V																										V
W			31			32				33				34				35				36				W
X																										X
Y																										Y
Z																										Z

PLYMOUTH TWP
ROCK COUNTY WI

IF AVAILABLE
ROCK COUNTY COORDINATES PREFERRED

North _____ Elev. _____

East _____

Hor. Datum _____ Vert. Datum _____

LATITUDE _____ ELLIPS. HT. _____

LONGITUDE _____

GPS (X) _____ TRAVERSE (X) _____

BASED ON THE FOLLOWING CONTROL:

PLACE MONUMENT SYMBOL AT PROPER LOCATION ON ABOVE INDEX

CORNER MONUMENT

WITNESS MONUMENT

(a)

BEARINGS ARE BASED ON:

OBSERVATION sheet 526

FIELD BOOK _____ PAGE # _____

SHEET 1 OF 3

SHOW A PLAN VIEW DRAWING DEPICTING THE CORNER MONUMENT AND SURROUNDING PHYSICAL FEATURES, INCLUDING THE EXCAVATION AREA AND DEPTH.

PLANNING & ZONING COMMITTEE ADOPTED THE ABOVE FORM ON 12/2/1982

CORNER CODE E-11

PL526

(B) Describe any record evidence, monument evidence, occupational evidence, testimonial evidence or any other material evidence you considered, and whether the monument was found or placed.

- 1833 HARRISON EAST BET 4 & 9 ON RAND
2260.5 BROOK 10.56' CRS S.E
2640 TEMPY ¼ P
5326.2 INT. E. BDY 49.50' N OF P. LAND LEVEL & WET 3RD
RATE ? GRASS & WEEDS
COR WEST
2663.1 QUARTER SEC COR POST & MOUND IN MARSH
5326.2 INT. SEC COR.
- 1843 STEBBIN TWP RD REC BK 1 PG 2 VARIATION OF NEEDLE 7 ½
BEGINNING AT THE SE COR OF SEC 1 T2N R11E; THENCE
WEST 2 ½ MILES (THIS COURSE FROM QUARTER POST ON
SOUTH SIDE OF SEC 1 TO SW COR SOUTH ON A RANGE FROM
BELOIT TO MADISON) TO THE QUARTER STAKE ON THE
SOUTH LINE OF SEC 3; THENCE N72W ONE MILE AND 20
CHAINS TO A STAKE; THENCE 59 WEST 1079.1' TO A BURR
OAK TREE; THENCE N70W 815.1' TO A STAKE; THENCE S65W
2610.3' TO A BLACK OAK TREE; THENCE S45W 1894.2' TO
SEC BETWEEN SECTIONS 5 & 8, 247.5' EAST OF THE SE COR
OF SEC 6, T2N R11E; THENCE WEST FOUR MILES 3679.5' TO
A STAKE ON THE SEC LINE BETWEEN SECS 4 & 9, 660' WEST
OF THE QUARTER POST; THENCE N43 ½W 838.2' TO A BURR
OAK TREE; THENCE N65W 3444.54' TO A POINT ON THE LINE
BETWEEN THE COUNTIES OF ROCK AND GREEN 341.88'
SOUTH OF THE QUARTER POST ON THE WEST SIDE OF SEC 7,
T2N, R10E AND THE WHOLE LENGTH OF THE ROAD IS 12
MILES 3927'
- 1845 PEASE TWP RD REC BK 1 PG 7 BEGINNING AT THE SE COR
OF SEC 3 IN T2N R11E RUNNING THENCE WEST ON THE
SOUTH SIDE OF SEC 3 AFORESAID 5214' AND TO THE SE
COR OF SEC 4, 5854.2' TO THE SE COR OF SEC 5; THENCE
WEST 5272.74 ON THE SOUTH SIDE OF SEC 5; THENCE WEST
5287.26' ON THE SOUTH SIDE OF SEC 6 AND TO THE LINE
BETWEEN RANGE 10 & 11; THENCE WEST 5306.4' ON THE
SOUTH SIDE OF SEC 1 T2N R10E; "'''''' SAID RD IS 66' WIDE
& 33' ON EACH SIDE OF THE DESCRIBED RD. VAR OF
NEEDLE FOUND BY COMPARISON WITH OLD LINES.
{DISTANCES MATCH ORIG. GOV SURVEYOR'S DIST}
- 1866 LOCKE VOL 1 PG 1-277 COR. LOST SET R. OAK STAKE IN
MOUND. VAR 6-00 2672.47 TO SE & SW CORNERS SEC 4.
SUBDIVIDED SEC 4
- 1866 LOCKE VOL 1 PG 278 & MAP #4317 SEE SEC 4 SUBDIVIDED
SEC 9. CENTER OF SEC 9 SET AT EQUAL DISTANT METHOD.
VAR 6-00 2672.47 TO NE & NW CORNERS OF SEC 9, 5280 TO
S ¼ COR SEC 9, & 2640 TO CENTER OF SEC 9.
- 1868 LOCKE PG 50 WEST BETWEEN SECS 4 AND 9 VAR 6
371.58 CENTER B & M RR
1338.15 ¼ ¼ COR SET BY SELF
2676.3 INTERSECTED ¼ LINE AT COR. SET BY SELF. (SEE
CO. SURVEYORS RECORD SEC 4)
3082.2 EAST BANK OF BASS CREEK
3095.4 WEST BANK OF BASS CREEK
5352.6 INTERSECTED WEST BOUNDARY AT COR. AS SET BY
SELF. SEE COUNTY SURVEYORS RECORD SEC 4
COR. IN LINE OF N AND S FENCES. SEPT 4 1868
- 1868 LOCKE VOL 1 PG 317 FD & MAP #4335 COR AS SET BY SELF.
VAR 6 2674.32 TO SE COR SEC 4
- 1868 LOCKE VOL 1 PG 320 FD COR AS SET BY SELF. VAR 6 2676.30
TO SE COR SEC 4, VAR 6-40 2642.64 TO CENTER OF SEC 9, &
VAR 7-10 2642.64 FROM CENTER OF SEC 9 TO S ¼ COR SEC 9.
- 1974 LEE VOL 5 PG 11 SET C.I. 1.5' DEEP 2678.32 TO SW & SE
CORNERS SEC 4. SET HALF-WAY BETWEEN NW & NE CORNERS
SEC 9. 456.25 NW TO SPIKE IN HIGH VOLTAGE UP & 294.18 SW
TO SPIKE IN HIGH VOLTAGE UP.
- 1980 COMBS GSM VOL10 PG 492 C.I.

SHEET 1 OF 3 CORNER CODE E-11

Donald Barnes

2-3-03

PL526

1988 BARNES VOL 6 PG 386 RECORD DISTANCE.

FD CI MON 15" DEEP.

C) Was the corner restored through acceptance of (1) an obliterated evidence location, or, (2) a found perpetuated location?

LEE PLACED MONUMENT ON LINE & MID WAY BETWEEN THE SE & SW CORNERS OF SEC 4. THIS IS IN HARMONY WITH LOCK'S REMONUMENTATION NOTES. HE FOUND HIS 1866 MONUMENT, WHICH IS PLACED MID WAY & ON LINE WITH SW & SE CORNERS OF SEC 4. ALSO IN HARMONY WITH LOCK'S DISTANCE TO THE FOUND MONUMENT AT THE CENTER OF SEC 9. ACCEPTED LEES' O.I. MONUMENT.

D) Describe any material discrepancy between the location of the corner as restored or reestablished and the location of that corner as previously restored or reestablished by distance and direction. Show the discrepancy on the plan view drawing under (a), above. Show the distances between the corner as previously restored or reestablished and (1) the corner as restored or reestablished, and (2) to at least 4 of the witness monuments shown on the drawing in (a), above.

(E) Was the corner reestablished through lost corner proportionate methods? If so, show the method, including the directions and distances to other public land survey corners used as evidence or used for proportioning the corner location.

I, Donald Barnes, hereby certify that the corner location as identified by the corner code index was determined by me under my direction and control and that this U.S. Public Land Survey Monument Record is correct and complete to the best of my knowledge and belief.

Donald Barnes

Seal

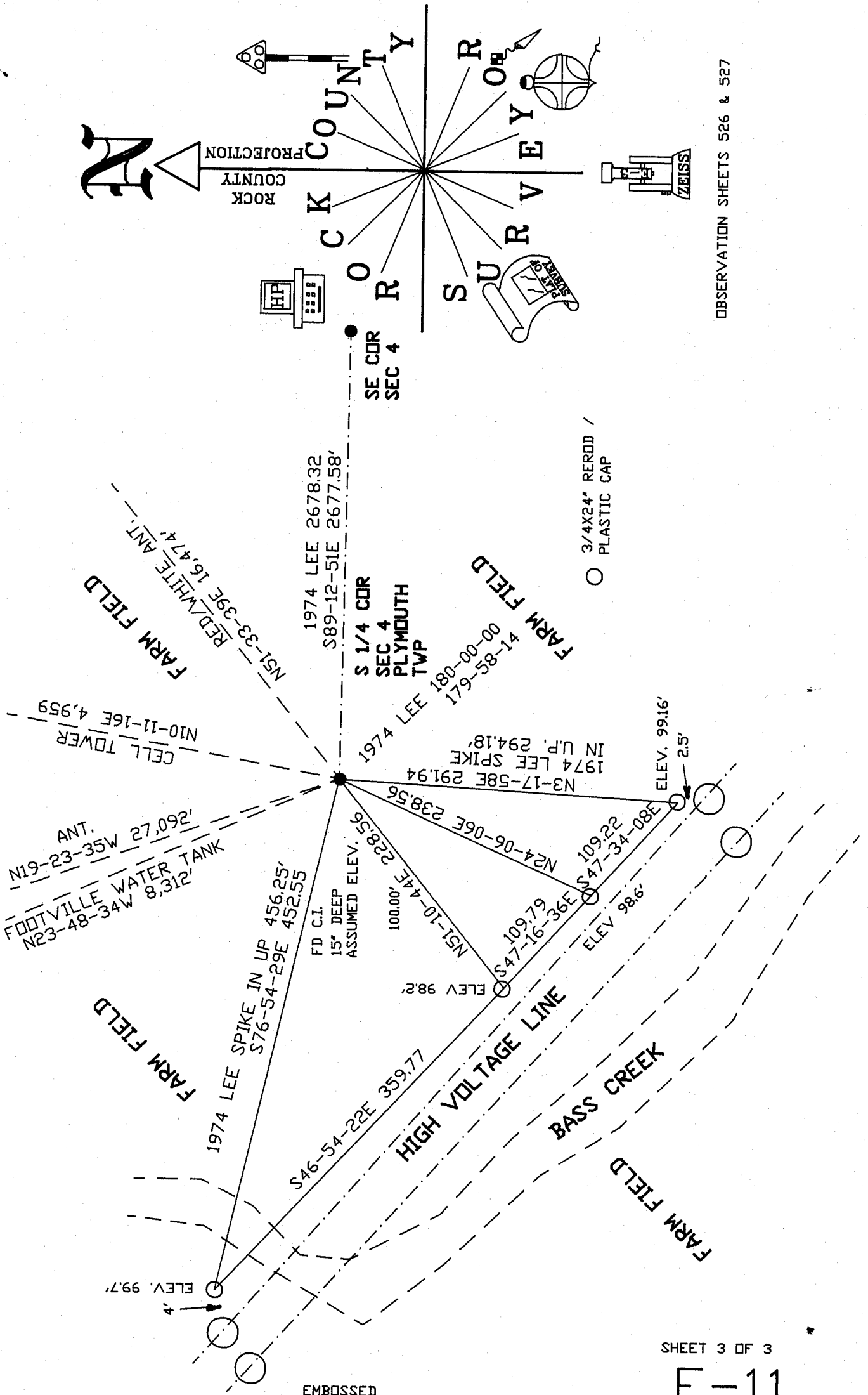
2/03/03
Emboss

SHEET 2 OF 3

CORNER CODE

E-11

A.E. 7.08 REQUIREMENT



OBSERVATION SHEETS 526 & 527

SHEET 3 OF 3

E-11

EMBOSSED SEAL

Donald Barnes
 2/03/03