

U.S. PUBLIC LAND SURVEY MONUMENT RECORD

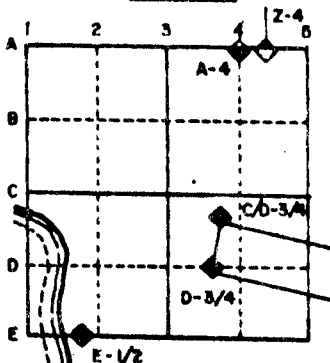
For Public Land Survey Corners in the

T. 2N., R. 11E.

CORNER CODE INDEX

1	2	3	4	5	6	7	8	9	10	11	12	13	14	15	16	17	18	19	20	21	22	23	24	25
A																								
B	6	5	4	3	2																			
C																								
D																								
E																								
F																								
G	7	8	9	10	11	12																		
H																								
I																								
J																								
K																								
L	13	17	16	15	14	13																		
M																								
N																								
O																								
P	19	20	21	22	23	24																		
Q																								
R																								
S																								
T	30	29	28	27	26	25																		
U																								
V																								
W																								
X																								
Y	31	32	33	34	35	36																		
Z																								

EXAMPLE



PLYMOUTH TWP
ROCK COUNTY WI

IF AVAILABLE STATE PLANE COORDINATES

North (Y) 246,093.46 Elev. (Z) _____

East (X) 2,225,931.35 Zone _____

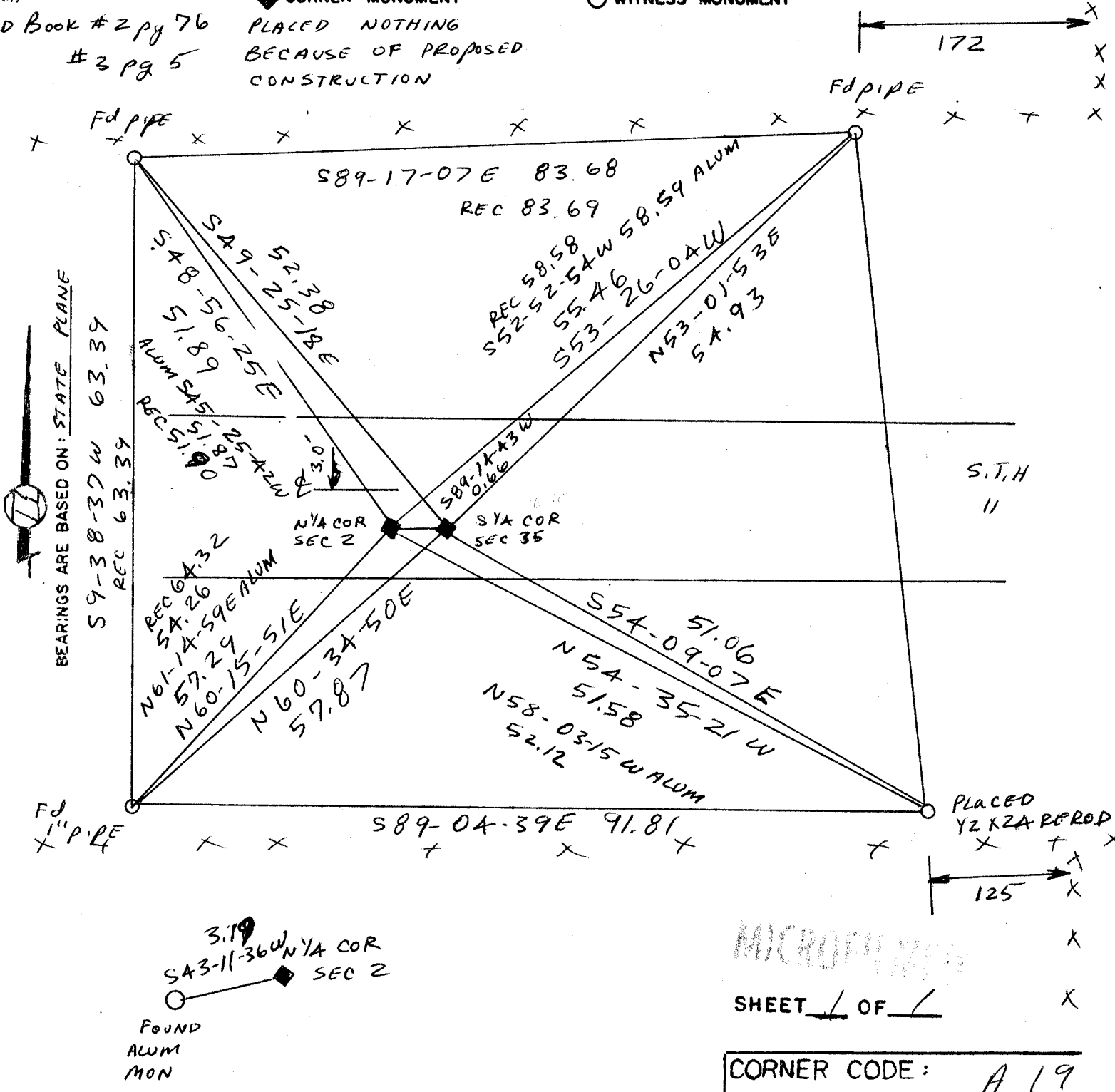
Hor. Datum _____ Vert. Datum _____

PLACE MONUMENT SYMBOL (◆) AT PROPER LOCATION ON ABOVE INDEX

OLD ALUM 246,091.14 USING POT CONTROL
2,225,929.17

o.) CORNER MONUMENT
PLACED NOTHING BECAUSE OF PROPOSED CONSTRUCTION

○ WITNESS MONUMENT



- 1868 LOCKE REMONUMENTATION FIELD NOTES. INTERSECTED 1/4 LINE FOR TOWN 3. 11 LKS NORTH OF CORNER. FOUND STONE WITH STAKE SET BY SUDREW CODDINGTON IN OLD MOUND. CORNER IN CENTER OF HIGHWAY AND IN LINE OF FENCE RUNNING NORTH. SET 1/4 CORNER .66' WEST OF 1/4 CORNER FOR T3N 1/4 MONUMENT MARKED WITH FIG. 2 ON SOUTH FACE. SHOWS A DISTANCE OF 2656.83 TO THE NW CORNER AND 2656.83 TO THE NE CORNER.
- 1877 RUGER VOL 2 PG 234 SHOWS A STONE MONUMENT AND STATES THAT IT IS SOUTH OF A LINE DRAWN FROM SECTION CORNER TO SECTION CORNER. SHOWS A DISTANCE OF 2654.19 TO THE NW CORNER AND 2652.54 TO THE NE CORNER. USED THE CORNER TO SUBDIVIDE SECTION 2. SHOWS A DISTANCE OF 2625.09 TO THE CENTER OF SECTION 2.
- 1933 SUNNY VOL 3 PG 235 SET 1" X 36" PIPE IN CONCRETE PAVEMENT 8.0 SOUTH OF CENTERLINE. SHOWS A DISTANCE OF 2656.9 TO THE NW CORNER AND 2656.9 TO THE NE CORNER. SHOWS A DISTANCE OF 2625.1 TO THE FENCE INTERSECTION AT THE CENTER OF SECTION 2.
- 1977 BARNES VOL 6 PG 364 FOUND SUNNY'S PIPE AND REPLACED IT WITH AN ALUMINUM MONUMENT.
- 1979 SCHROEDER VOL 5 PG 531 USED THE SOUTH QUARTER CORNER OF SECTION 35 T3N TO SUBDIVIDE SECTION 35. THAT CORNER WAS ESTABLISHED BY USING SUNNY'S PIPE.

DUG AND FOUND CUT LIMESTONE 26" DEEP 3.0 SOUTH OF CENTER OF PAVEMENT. PLACED MAGNET ON TOP OF STONE. IT APPEARED FROM THE EXCAVATION SITE THAT SUNNY NEVER DUG FOR THE CORNER.

(C) WAS THE CORNER RESTORED THROUGH ACCEPTANCE OF (1) AN OBLITERATED EVIDENCE LOCATION, OR, (2) A FOUND PERPETUATED LOCATION?
ACCEPTED FOUND CUT LIMESTONE.

(D) DESCRIBE ANY MATERIAL DISCREPANCY BETWEEN THE LOCATION OF THE CORNER AS RESTORED OR REESTABLISHED AND THE LOCATION OF THAT CORNER AS PREVIOUSLY RESTORED OR REESTABLISHED BY DISTANCE AND DIRECTION. SHOW THE DISCREPANCY ON THE PLAN VIEW DRAWING UNDER (A), ABOVE. SHOW THE DISTANCES BETWEEN THE CORNER AS PREVIOUSLY RESTORED OR REESTABLISHED AND (1) THE CORNER AS RESTORED OR REESTABLISHED AND (2) TO AT LEAST 4 OF THE WITNESS MONUMENTS SHOWN ON THE DRAWING IN (A), ABOVE.

THE CUT LIMESTONE IS 3.26' FROM THE ALUMINUM MONUMENT AND IS SHOWN ON THE MAP.

