

U.S. PUBLIC LAND SURVEY MONUMENT RECORD

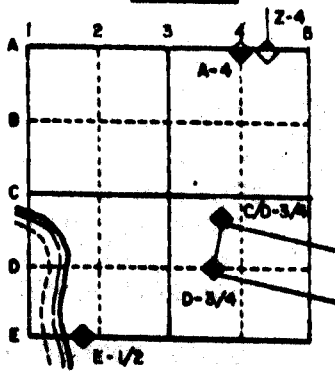
For Public Land Survey Corners in the

T. 2 N., R. 11 E.

CORNER CODE INDEX

1	2	3	4	5	6	7	8	9	10	11	12	13	14	15	16	17	18	19	20	21	22	23	24	25
A																								
B	6	5	4	3	2																			
C																								
D																								
E																								
F																								
G	7	8	9	10	11	12																		
H																								
I																								
J																								
K																								
L	18	17	16	15	14	13																		
M																								
N																								
O																								
P	19	20	21	22	23	24																		
Q																								
R																								
S																								
T	30	29	28	27	26	25																		
U																								
V																								
W																								
X																								
Y	31	32	33	34	35	36																		
Z																								

EXAMPLE



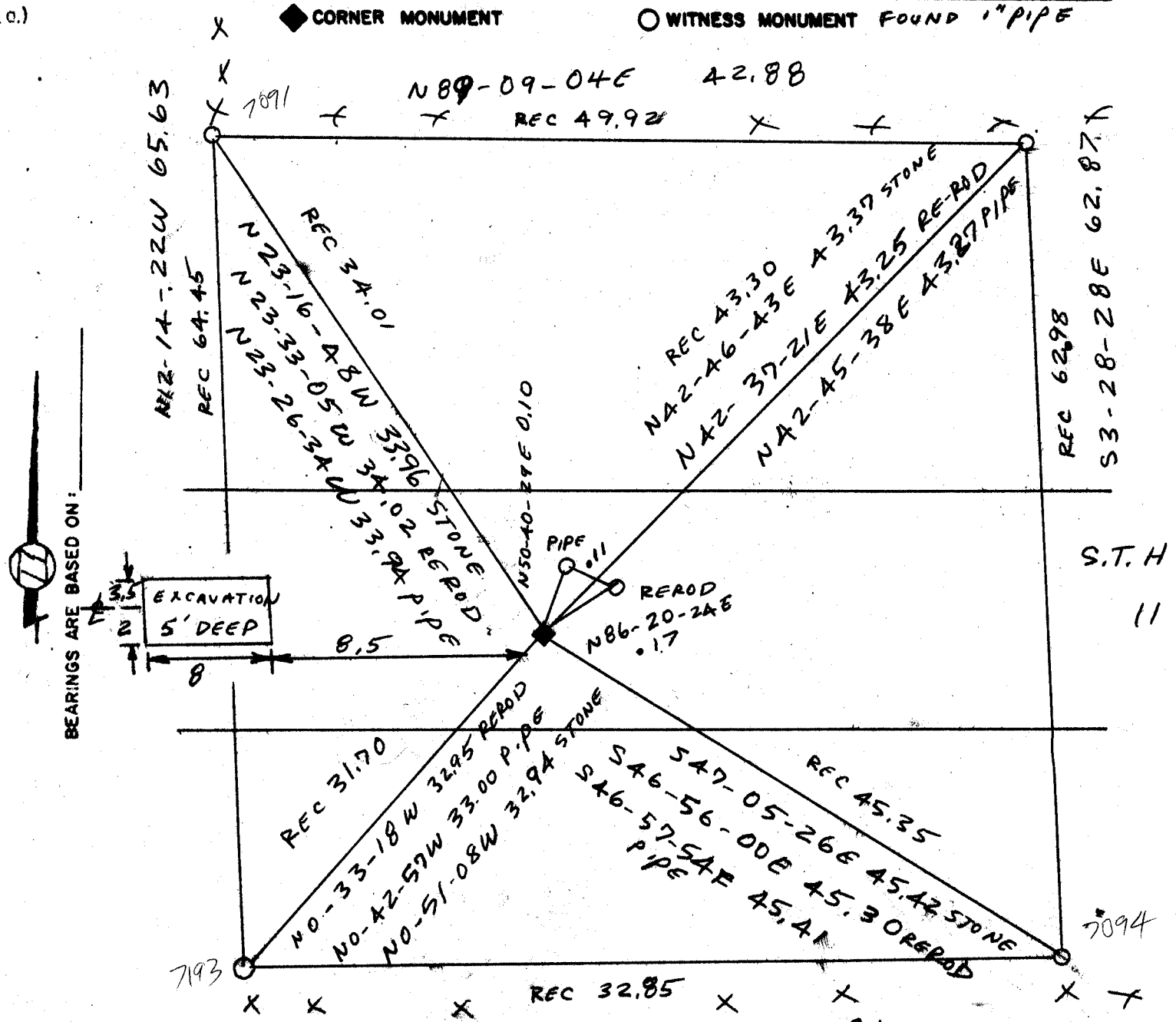
PLYMOUTH TWP
ROCK COUNTY WI

IF AVAILABLE STATE PLANE COORDINATES

North (Y) 246,064.92 Elevation (Z) _____
 East (X) 2,220,619.41 Zone _____
 Hor. Datum _____ Vert. Datum _____

PIPE 246,064.98 USING P.O.T CONTROL
2,220,619.49

PLACE MONUMENT SYMBOL (●) AT PROPER LOCATION ON ABOVE INDEX



FIELD BOOK
 3 Pg 4
 2 Pg 75

MICROFILMED

SHEET ___ OF ___

CORNER CODE: A 15

- 1855 CHURCH VOL 1 PG 39 USED CORNER TO SUBDIVIDE SECTION 3.
1866 LOCKE REMONUMENTATION FIELD NOTES AT THE SOUTH QUARTER CORNER OF SECTION 34 FOUND OLD STAKE IN CENTER OF HIGHWAY AND IN LINE OF FENCES RUNNING NORTH AND SOUTH. AT NORTH QUARTER CORNER OF SECTION 3 SET CORNER 13.20' EAST OF QUARTER CORNER FOR TOWN 3. THE SECTION CORNER WEST BEING LAST. PLACED CUT LIMESTONE. NOTES SHOW A DISTANCE OF 2645.28 TO THE NORTHWEST CORNER AND 2654.88 TO THE NORTHEAST CORNER.
1886 RUGER VOL 2 PG 272 USED CORNER TO SUBDIVIDE SECTION 3.
1933 SUNNY VOL 3 PG 235 SET 1' X " 35" PIPE IN CONCRETE PAVEMENT 0.4' NORTH OF CENTER OF SAME. MAP SHOWS THAT THE SOUTH QUARTER CORNER OF SECTION 34 IS 13.20' WEST. SHOWS A DISTANCE OF 2645.4' TO THE NW CORNER AND 2653.6 TO THE NORTH EAST CORNER.
1970 BATTERMAN VOL 4 PG 484 SHOWS CORNER REFERENCED.

FOUND REEROD AT ROAD SURFACE. 6" DEEP FOUND PIPE IN CONCRETE PAVEMENT. 34" DEEP FOUND CUT LIMESTONE. PLACED MAGNET ON TOP OF STONE.

(C) Was the corner restored through acceptance of (1) an obliterated evidence location, or, (2) a found perpetuated location?

ACCEPTED FOUND CUT LIMESTONE.

(d) Describe any material discrepancy between the location of the corner as restored or reestablished and the location of that corner as previously restored or reestablished by distance and direction. Show the discrepancy on the plan view drawing under (a), and (1) the corner as restored or reestablished, and (2) to at least 4 of the witness monuments shown on the drawing in (a), above.

SEE MAP FOR DISCREPANCY.

