

U.S. PUBLIC LAND SURVEY MONUMENT RECORD

For Public Land Survey Corners in:

WI ADMINISTRATIVE CODE A-E 7.08 REQUIREMENT

T. 2N., R. 11E

CORNER CODE INDEX

A	2	3	4	5	6	7	8	9	10	11	12	13	14	15	16	17	18	19	20	21	22	23	24	25
B	6	5	4	3	2	1																		
C																								
D																								
E																								
F	1	8	9	10	11	12																		
G																								
H																								
I	18	11	10	15	14	13																		
J																								
K																								
L																								
M																								
N																								
O																								
P	19	20	21	22	23	24																		
Q																								
R																								
S																								
T	30	29	28	27	26	25																		
U																								
V																								
W																								
X	31	32	33	34	35	36																		
Y																								
Z																								

PLYMOUTH TWP

ROCK COUNTY WI

IF AVAILABLE
ROCK COUNTY COORDINATES PREFERRED

North _____ Elev. _____

East _____

Hor. Datum _____ Vert. Datum _____

LATITUDE _____ ELLIPS. HT. _____

LONGITUDE _____

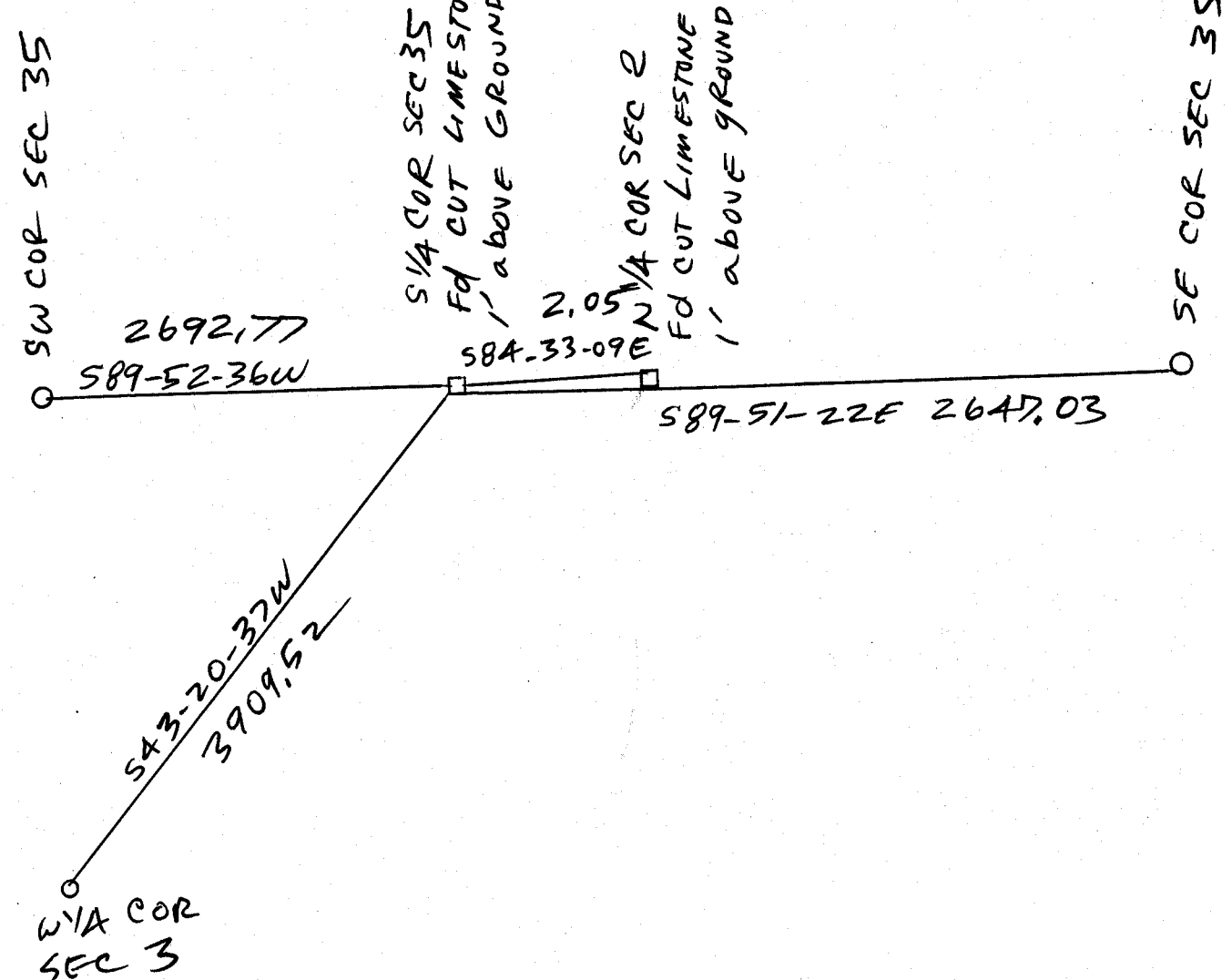
GPS (X) _____ TRAVERSE (X) _____

BASED ON THE FOLLOWING CONTROL:

PLACE MONUMENT SYMBOL \blacklozenge AT PROPER LOCATION ON ABOVE INDEX

BEARINGS ARE BASED ON: COUNTY SYSTEM

\blacklozenge CORNER MONUMENT \circ WITNESS MONUMENT



OBSERVATION SHEET 519

FIELD BOOK _____ PAGE # _____

SHEET 1 OF 1

SHOW A PLAN VIEW DRAWING DEPICTING THE CORNER MONUMENT AND SURROUNDING PHYSICAL FEATURES, INCLUDING THE EXCAVATION AREA AND DEPTH.

PLANNING & ZONING COMMITTEE ADOPTED THE ABOVE FORM ON 12/2/1982

CORNER CODE 219

PL630

(B) Describe any record evidence, monument evidence, occupational evidence, testimonial evidence or any other material evidence you considered, and whether the monument was found or placed.

- 1833 MULLET WEST ON SOUTH SIDE SECTION 35
1387.32 WHITE OAK 10 IN DIAMETER
2640 SET QUARTER SECTION POST WHITE OAK 18 N69E 14.52'; WHITE OAK 14 N78W 23.76'
5280 SET POST CORNER SECTION 34 & 35 WHITE OAK 20 N62E 33'; WHITE OAK 3 N62W 24.42'
- 1868 LOCKE PLYMOUTH REMONUMENTATION PG 15
EAST ON SOUTH LINE OF SEC 35. VAR 5-30
330 SET OFF 15.18' NORTH
1716 SET OFF 6.27' NORTH
1452 SET OFF 4.29' NORTH
1848 SET OFF 46.86' NORTH
2696.1 INTERSECTED 1/4 LINE 52.8' NORTH OF COR. FOUND STUMP OF EAST BT AND WHERE WEST BT WAS DUG OUT AND OLD STAKE. COR 3 FT NORTH OF E & W FENCE & 3 FT WEST OF N & S FENCE VAR CORRECTED 5-56 AUG 20, 1868
CONTINUED EAST FROM 1/4 COR WITH VAR 5-56
5346 INTERSECTED EAST BOUNDARY 3.63' SOUTH OF COR. VAR CORRECTED 5-55 1/4 MONUMENT MARKED WITH FIGURE 35 ON NORTH FACE.
- 1871 COLLINS REMONUMENTATION PG 160
EAST ON NORTH LINE OF 2, VARIATION 6-16
5454.24 SEC CORNER
BACK TO
2727.12 SET 1/4 STONE 1.98 EAST OF PLYMOUTH CORNER OCT 21 1871
- 1882 HOLMES VOL 2PG 349 VAR 4-29 2774.31 TO CENTER OF SEC 2.

FOUND CUT LIMESTONE 0.1' ABOVE GRADE & @ S 1 COR SEC 35 PLYMOUTH TWP FD CUT LIMESTONE 0.1' ABOVE GRADE ON SOUTH SIDE OF LILAC BUSH & ABOUT 10' WEST OF N/S FENCE. IN BACK YARD OF HOME.

C) Was the corner restored through acceptance of (1) an obliterated evidence location, or, (2) a found perpetuated location?

ACCEPTED FOUND CUT LIMESTONES.

D) Describe any material discrepancy between the location of the corner as restored or reestablished and the location of that corner as previously restored or reestablished by distance and direction. Show the discrepancy on the plan view drawing under (a), above. Show the distances between the corner as previously restored or reestablished and (1) the corner as restored or reestablished, and (2) to at least 4 of the witness monuments shown on the drawing in (a), above.

(E) Was the corner reestablished through lost corner proportionate methods? If so, show the method, including the directions and distances to other public land survey corners used as evidence or used for proportioning the corner location.

I, Donald Barnes, hereby certify that the corner location as identified by the corner code index was determined by me under my direction and control and that this U.S. Public Land Survey Monument Record is correct and complete to the best of my knowledge and belief.

seal


emboss

6-29-01

Number of included sheets 1

CORNER CODE Z-19