

# U.S. PUBLIC LAND SURVEY MONUMENT RECORD

For Public Land Survey Corners in:

WI ADMINISTRATIVE CODE A-E 7.08 REQUIREMENT

T. 2 N., R. 11 E

### CORNER CODE INDEX

A	1	2	3	4	5	6	7	8	9	10	11	12	13	14	15	16	17	18	19	20	21	22	23	24	25
B																									
C	6																								
D																									
E																									
F																									
G	7																								
H																									
I																									
J																									
K																									
L	18																								
M																									
N																									
O																									
P	19																								
Q																									
R																									
S																									
T	30																								
U																									
V																									
W																									
X	31																								
Y																									
Z																									

PLYMOUTH TWP

ROCK COUNTY WI

IF AVAILABLE  
ROCK COUNTY COORDINATES PREFERRED

North \_\_\_\_\_ Elev. \_\_\_\_\_

East \_\_\_\_\_

Hor. Datum \_\_\_\_\_ Vert. Datum \_\_\_\_\_

LATITUDE \_\_\_\_\_ ELLIPS. HT. \_\_\_\_\_

LONGITUDE \_\_\_\_\_

GPS (X) \_\_\_\_\_ TRAVERSE (X) \_\_\_\_\_

BASED ON THE FOLLOWING CONTROL:

PLACE MONUMENT SYMBOL  AT PROPER LOCATION ON ABOVE INDEX

CORNER MONUMENT

WITNESS MONUMENT

(a)

BEARINGS ARE BASED ON:

FIELD BOOK \_\_\_\_\_ PAGE # \_\_\_\_\_

SHEET 1 OF 2

SHOW A PLAN VIEW DRAWING DEPICTING THE CORNER MONUMENT AND SURROUNDING PHYSICAL FEATURES, INCLUDING THE EXCAVATION AREA AND DEPTH.

PLANNING & ZONING COMMITTEE ADOPTED THE ABOVE FORM ON 12/2/1982

CORNER CODE 715

PL628

(B) Describe any record evidence, monument evidence, occupational evidence, testimonial evidence or any other material evidence you considered, and whether the monument was found or placed.

- 1833 MULLETT *WEST ON SOUTH SIDE SECTION 34*
  - 2640 SET QUARTER SECTION POST WHITE OAK 16 N29E 155.76' BUR OAK ; BUR OAK 12 N60 1/2W 167.64';
  - 3960 ENTER PRAIRIE
  - 5280 SET POST CORNER SECTIONS 33 & 34 MADE A MOUND OF STONES 3 FEET IN DIAMETER AT BASE & 3 FEET HIGH FIRST 3/4 THINLY TIMBERED WITH BLACK WHITE AND BUR OAK THICK UNDERGROWTH HAZEL BRIERS GRAPE VINES & LAST 1/4 RICH DRY PRAIRIE.
- 1868 LOCKE PLYMOUTH TWP REMONUMENTATION PG 16  
*WEST ON SOUTH LINE SEC 34 VAR 6 AUG 21 1868*
  - 264 SET OFF 3.3' SOUTH
  - 528 SET OFF 6.6 SOUTH
  - 792 SET OFF 1.32' SOUTH
  - 1518 SET OFF 1.65' SOUTH
  - 2673 INTERSECTED 1/4 LINE 14.52' SOUTH OF COR. FOUND BTS AND OLD STAKE. VAR CORRECTED 5-58.  
*CONTINUED WEST FROM 1/4 COR WITH VAR 6-22*
  - 3762 ENTER PRAIRIE
  - 5339.4 INTERSECTED WEST BOUNDARY 30.36' SOUTH OF COR. FOUND LARGE LIMESTONE SET FOR CORNER. COR IN CENTER HIGHWAYS RUNNING N, E & W SET MONUMENT IN MOUND OF STONES COVERED WITH EARTH. VAR CORRECTED 5-43 1/4 MONUMENT MARKED 34 ON NORTH FACE.
- 1871 COLLINS *EAST ON NORTH LINE OF SEC 3 VARIATION 5-50 PF 173*
  - 5280 SECTION CORNER  
*BACK TO*
  - 2640 SET 1/4 STONE 1.98' EAST OF PLYMOUTH CORNER  
OCT 26 1871
- 1882 RUGER VOL 2 PG 403 STATES NOTHING ABOUT MON. 2632.74 TO NW COR SEC 3 & 2657.49 TO CENTER SEC 3.
- 1882 HOLMES VOL 2 PG 349 2653.86 TO CENTER OF SEC 3
- 1873 RUGER VOL 2 PG 117 CALLS FOR STONE MON 1.98' EAST OF THE S 1/4 COR SEC 34, 2653.86 TO CENTER OF SEC 3
- 1957 BATTERMAN VOL 3 PG 520 FD MON AT S 1/4 COR SEC 34 & REFERENCED SAME. FD NO MON. AT N 1/4 COR SEC 3. 1.98 ACCORDING TO REC BETWEEN CORNERS WITH PLYMOUTH COR TO THE WEST, SOUTH 1342.87 TO THE 1/16TH COR.(FD 16X5X4 1/2 LIMESTONE BROKEN. SET 1 1/2 PIPE) WEST 2637.63
- 1976 BARNES VOL 5 PG 204 FD CUT STONES. S 1/4 COR SEC 34 PLYMOUTH TWP LEANING; STRAIGHTENED, PLACED 1 1/2X24 IP HORIZONTALLY BETWEEN MONUMENTS. REFERENCED BOTH. MONUMENTS ARE 3.5' SOUTH OF SOUTH PVMT EDGE. 1.93' BETWEEN LIMESTONES.
- 1986 BARNES VOL 6 PG 358 SHOWS RECORD DISTANCES

FD CUT LIMESTONE BELOW GRADE WITH VERTICAL REROD ON ALL 4 SIDES. FOUND CUT LIMESTONE BELOW GRADE AT S 1/4 COR SEC 34 PLYMOUTH TWP.

C) Was the corner restored through acceptance of (1) an obliterated evidence location, or, (2) a found perpetuated location?

ACCEPTED FOUND CUT LIMESTONE.

I, Donald Barnes, hereby certify that the corner location as identified by the corner code index was determined by me under my direction and control and that this U.S. Public Land Survey Monument Record is correct and complete to the best of my knowledge and belief.

seal  
emboss

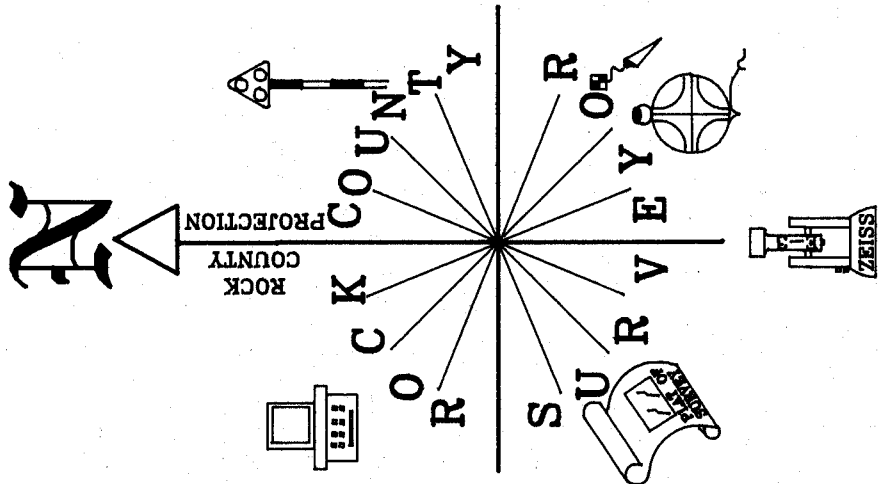
Number of included sheets 1

*Donald Barnes*

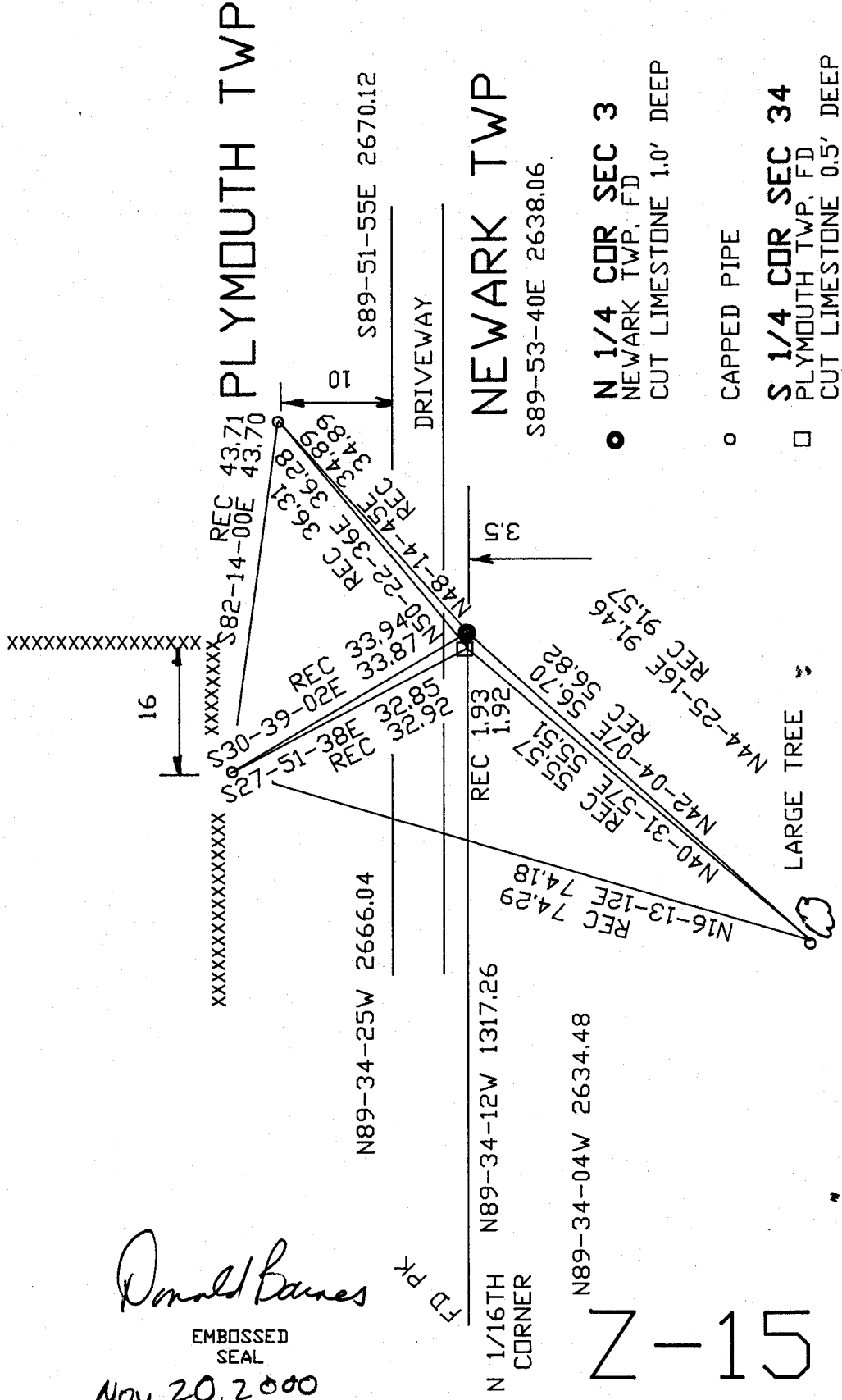
CORNER CODE **Z-15**

*NOV 20 2000*

A-E 7.08 REQUIREMENT



OBSERVATION SHEET #4628 & 435



*Donald Barnes*

EMBOSSED SEAL

Nov 20, 2000

Z-15

N 1/16TH CORNER  
 N89-34-12W 1317.26  
 N89-34-04W 2634.48

- N 1/4 COR SEC 3  
NEWARK TWP, FD  
CUT LIMESTONE 1.0' DEEP
- CAPPED PIPE
- S 1/4 COR SEC 34  
PLYMOUTH TWP, FD  
CUT LIMESTONE 0.5' DEEP