

# U.S. PUBLIC LAND SURVEY MONUMENT RECORD

For Public Land Survey Corners in:

WI ADMINISTRATIVE CODE A-E 7.08 REQUIREMENT

T. 2N., R. 11E

### CORNER CODE INDEX

PLYMOUTH TWP

ROCK COUNTY WI

IF AVAILABLE  
ROCK COUNTY COORDINATES PREFERRED

A	1	2	3	4	5	6	7	8	9	10	11	12	13	14	15	16	17	18	19	20	21	22	23	24	25
B	6																								
C		5																							
D			4																						
E				3																					
F					2																				
G	1																								
H		8																							
I			9																						
J				10																					
K					11																				
L	18					16																			
M		17					15																		
N			18					14																	
O				19					13																
P					20					12															
Q						21					11														
R							22					10													
S								23					9												
T									24					8											
U										25					7										
V											26					6									
W												27					5								
X													28					4							
Y														29					3						
Z															30					2					

North \_\_\_\_\_ Elev. \_\_\_\_\_

East \_\_\_\_\_

Hor. Datum \_\_\_\_\_ Vert. Datum \_\_\_\_\_

LATITUDE \_\_\_\_\_ ELLIPS. HT. \_\_\_\_\_

LONGITUDE \_\_\_\_\_

GPS (X) \_\_\_\_\_ TRAVERSE (X) \_\_\_\_\_

BASED ON THE FOLLOWING CONTROL:

PLACE MONUMENT SYMBOL  AT PROPER LOCATION ON ABOVE INDEX

CORNER MONUMENT

WITNESS MONUMENT

(a) BEARINGS ARE BASED ON:

FIELD BOOK \_\_\_\_\_ PAGE # \_\_\_\_\_

SHEET 1 OF 3

SHOW A PLAN VIEW DRAWING DEPICTING THE CORNER MONUMENT AND SURROUNDING PHYSICAL FEATURES, INCLUDING THE EXCAVATION AREA AND DEPTH.

PLANNING & ZONING COMMITTEE ADOPTED THE ABOVE FORM ON 12/2/1982

CORNER CODE 2-1

PL621

(B) Describe any record evidence, monument evidence, occupational evidence, testimonial evidence or any other material evidence you considered, and whether the monument was found or placed.

- 1833 MULLETT NORTH ON EAST SIDE SECTION 1 (T1N R10E)  
539.22 BLACK OAK 12 IN DIAMETER  
2640 SET QUARTER SECTION POST BLACK OAK 18 N36W 65.34';  
BLACK OAK 8 S64W 177.54'  
3794.34 BUR OAK 10 IN DIAMETER  
5280 SET TEMPORARY 6 MILE POST LAND ROLLING SECOND RATE WHITE & BUR OAK. RED ROOT ROSE WILLOW. SEPT 4TH 1833.
- 1833 MULLETT WEST ON SOUTH SIDE SECTION 31 (T2N R11E)  
660 LEAVE PRAIRIE & ENTER WOODLAND  
2640 SET QUARTER SECTION POST BUR OAK 14 N31E 116.16'; BUR OAK 16 N42W 80.52'  
5280 INTERSECTED RANGE LINE 264' SOUTH OF TEMPORARY POST FOR CORNER TO TOWNSHIP 1 & 2 N RANGES 10 & AND BUR OAK. SEPT 6TH, 1833.
- 1833 MULLETT VAR 7-00 WEST ON SOUTH SIDE SECTION 36 (T2N R10E)  
2640 SET QUARTER SECTION POST BUR OAK 12 N29W 49.5'; BUR OAK 12 N23E 49.5'  
5280 SET POST CORNERS SECTIONS 35 & 36 BUR OAK 16 N 76 1/2W 229.02'; BUR OAK 14 N44 1/2E 145.2' LAND ROLLING FIRST RATE TIMBERED BLACK WHITE AND BUR OAK RED ROOT, HAZEL ROSE WILLOW. VAR BY OBSERVATION 7-40E
- 1833 MULLETT NORTH ON EAST SIDE OF SECTION 36 (T2N R10E) VAR 8-15E  
2640 SET QUARTER SECTION POST BUR OAK 14 N73W 36.96'; BUR OAK S57W 35.64'  
5280 SET POST CORNER SECTIONS 25 & 36 WHITE OAK 14 S52W 126.06'; BUR OAK 12 N38W 97.68'. LAND ROLLING SECOND RATE THINLY TIMBER BASED WITH W, BUR & BLK OAK.
- 1868 LOCKE PLYMOUTH TWP REMONUMENTATION SEPT 14 1868  
PG 72 SOUTH ON WEST LINE SEC 31 VAR 7-30  
1382.7 SMALL BROOK  
1521.3 SMALL BROOK  
2631.42 INTERSECTED 1/4 LINE 12.87' EAST OF COR. FOUND B.T.S COR IN CENTER OF ROAD AND 6.6' NORTH OF E AND W FENCES. VAR CORRECTED 7-13  
SET OFF FROM 1/4 COR .66' WEST AND CONTINUED SOUTH WITH VAR 7-20  
4092 SET OFF 9.57' WEST  
5267.79 INTERSECTED SOUTH BOUNDARY 3.96' WEST OF COR. FOUND NORTH BT AND WHERE SOUTH BT WAS DUG OUT AND LARGE LIMESTONE ON COR. COR IN CENTER OF HIGHWAY. VAR CORRECTED 7-13  
PG 73 EAST ON SOUTH LINE SEC 31 VAR 6 SEPT 14, 1868  
2657.82 INTERSECTED 1/4 LINE 13.53' NORTH OF COR. FOUND WEST B.T. AND STUMP OF EAST B.T. COR. IN CENTER OF HIGHWAY AND IN LINE OF FENCE RUNNING SOUTH. VAR CORRECTED 5-43.  
CONTINUED EAST FROM 1/4 COR WITH VAR 6  
5320.92 INTERSECTED EAST BOUNDARY 22.11' NORTH OF COR. VAR CORRECTED 5-31 1/4 MONUMENT MARKED 31 ON ITS NORTH FACE.

Donald Barnes  
2-14-03

SHEET 1 OF 3 CORNER CODE Z-1.

PL621

1871 COLLINS REMONUMENTATION NOTES (NOV 4TH 1871) NEWARK  
TWP T1N R11E

PB 208 NORTH ON THE WEST LINE OF SEC 6. VARIATION 6-45  
2661.78 SET 1/4 STONE BY WITNESS TREES.

CONTINUED NORTH VARIATION 6-30

5068.14 STONE AT SW COR SEC 31 TOWN 2 R 11

PB 209 EAST ON NORTH LINE SEC 6 VARIATION 5-52  
5283.96 SET STONE FOR CORNER OF 5 & 6 BY STUMP OF WITNESS  
TREE. PLYMOUTH CORNER IS 30.36' WEST

BACK

2641.98 SET 1/4 STONE 13.2' W(?) OF PLYMOUTH CORNER. NOV  
4TH 1871

1937 SUNNY VOL 3 PB 357 FOUND 6X5 LIMESTONE 10" LOW. IT IS  
NOT IN BLACK TOP ROAD. DID NOT SET PIPE ON TOP OF STONE.  
SHOWS A TIE SHEET.

1957 BATTERMAN JR. VOL 3 PB 522 SHOWS TIE SHEET AND CORNER AT  
CENTER OF ROAD. ALSO SHOWS A DISTANCE OF 2645.46' FEET TO  
THEN 1/4 COR SEC 6 NEWARK TWP. STATES NOTHING ABOUT MON.

1963 BATTERMAN VOL 4 PB 164 SHOWS TIES. FD CUT STONE @ COR.

1987 BARNES A-25 FOUND REFERENCE PIPES AS SHOWN. DUG 2' WIDE  
TRENCH 24" DEEP 70.1' FROM REFERENCE PIPE. SOUTH & NORTH  
END OF TRENCH IS 21.6' AND 16.4' FROM REROD ON NORTH SIDE  
OF ROAD. FOUND NOTHING.

1993 BARNES A-1(1) FOUND LIMESTONE 2.3' DEEP & REFERENCED  
SAME. CALLS FOR 5323.52 TO NW COR SEC 1 AVON TWP, 2406.19  
TO E 1/4 COR SEC 1 AVON TWP, & AN ANGLE OF 90-28-31 @ THE  
NE COR SEC 1 FROM THE EAST LINE ALONG THE NORTH LINE OF  
SEC 1 AVON TWP.

1995 LATHROP CSM18-105 PIN 2658.24 TO CAPPED PIPE @ S 1/4 COR  
SEC 31

2001 BARNES A-1(2) FD 1/2" PIN, PK TRAVERSE STATION, & REFERENCE  
TIES COORDINATES ESTABLISHED BY GPS FOR NEWARK TWP  
PROJECT

FD 1/2" PIN, PK TRAVERSE STATION, & REFERENCE TIES

*C) Was the corner restored through acceptance of (1) an obliterated evidence location, or, (2) a found perpetuated location?*

ACCEPTED FOUND 1/2" PIN, WHICH PERPETUATES THE CUT L.S.  
LOCATION.

I, Donald Barnes, hereby certify that the corner location as identified by the corner code index was determined by me under my direction and control and that this U.S. Public Land Survey Monument Record is correct and complete to the best of my knowledge and belief.

seal  
*Donald Barnes*

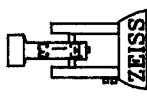
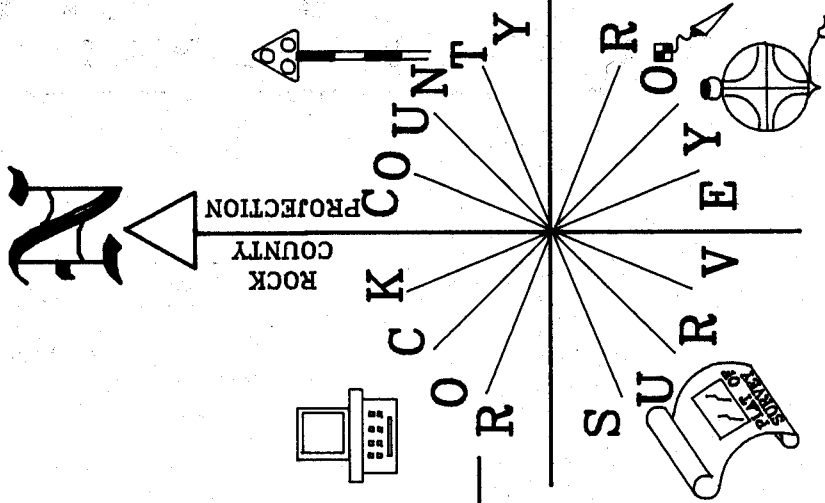
emboss

2-14-03

SHEET 2 OF 3

CORNER CODE **Z-1**

A-E 7.08 REQUIREMENT



NOT TO SCALE  
OBSERVATION SHEETS 788,  
621,708,788,230,794

PLYMOUTH TWP

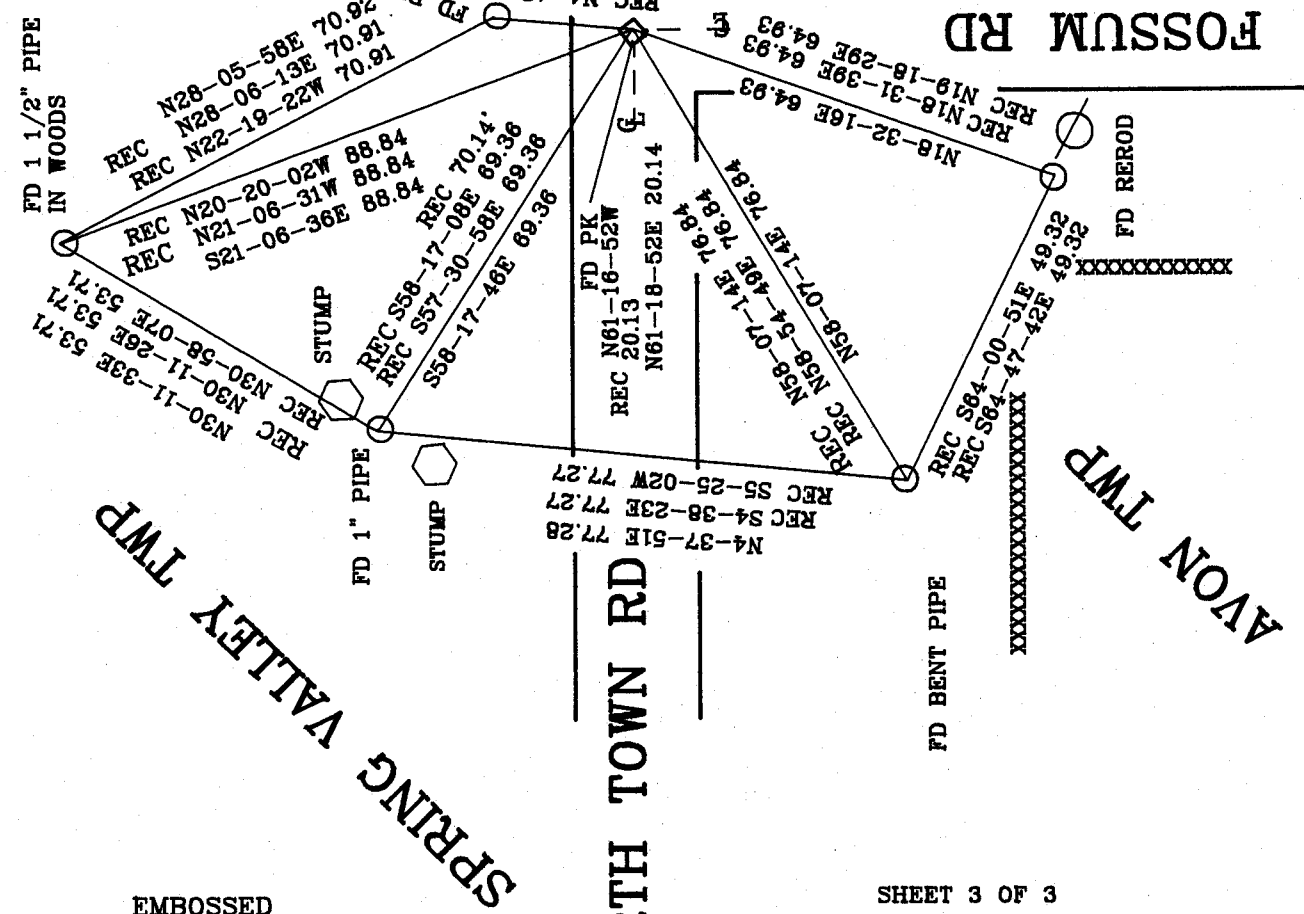
NEWARK TWP

SW COR  
SEC 31  
PLYMOUTH TWP  
T2N R11E

FB#2 PG 60 SPRING VALLEY TWP  
FB#2 PG 10&11 NEWARK TWP  
OLD TIES VOL 4 PG 165

FD 1 1/2" PIN  
CUT LIMESTONE 2.3' DEEP

N3-57-37E 20.37  
REC 20.37  
N3-57-34E 20.37  
REC 20.37  
REC N4-43-47E 20.37  
REC N4-43-47E 20.37



SPRING VALLEY TWP

AVON TWP

EMBOSSSED  
SEAL

SHEET 3 OF 3

*Donald Barnes*  
2/14/03

Z-1