

U.S. PUBLIC LAND SURVEY MONUMENT RECORD

For Public Land Survey Corners in:

WI ADMINISTRATIVE CODE A-E 7.08 REQUIREMENT

T. 2N., R. 11E

CORNER CODE INDEX

A	1	2	3	4	5	6	7	8	9	10	11	12	13	14	15	16	17	18	19	20	21	22	23	24	25
B																									
C	6					5					4				3						2				1
D																									
E																									
F																									
G	1					8					9				10						11				12
H																									
J																									
K																									
L	18									17					16						15				14
M																									
N																									
O																									
P																									
Q	19									20					21						22				23
R																									24
S																									
T																									
U	30									29					28						27				26
V																									25
W																									
X																									
Y	31									32					33						34				35
Z																									36

PLYMOUTH TWP
ROCK COUNTY WI

IF AVAILABLE
ROCK COUNTY COORDINATES PREFERRED

North _____ Elev. _____

East _____

Hor. Datum _____ Vert. Datum _____

LATITUDE _____ ELLIPS. HT. _____

LONGITUDE _____

GPS (X) _____ TRAVERSE (X) _____

BASED ON THE FOLLOWING CONTROL:

PLACE MONUMENT SYMBOL AT PROPER LOCATION ON ABOVE INDEX

CORNER MONUMENT

WITNESS MONUMENT

(a)

BEARINGS ARE BASED ON:

FIELD BOOK _____ PAGE # _____

SHEET 1 OF 4

SHOW A PLAN VIEW DRAWING DEPICTING THE CORNER MONUMENT AND SURROUNDING PHYSICAL FEATURES, INCLUDING THE EXCAVATION AREA AND DEPTH.

PLANNING & ZONING COMMITTEE ADOPTED THE ABOVE FORM ON 12/2/1982

CORNER CODE V-1

PL601

(B) Describe any record evidence, monument evidence, occupational evidence, testimonial evidence or any other material evidence you considered, and whether the monument was found or placed.

1833 MULLETT VAR 8-15E NORTH ON EAST SIDE SECTION 36

2640 SET QUARTER SECTION POST BUR OAK 14 N73W
36.96'; BUR OAK S57W 35.64'

5280 SET POST CORNER SECTIONS 24 & 36 WHITE OAK 14
S52W 126.06'; BUR OAK 12 N38W 97.68' LAND
ROLLING SECOND RATE THINLY TIMBERED WITH W BUR
& BLK OAK

NORTH ON EAST SIDE SECTION 25 T2N R10E

2508 ENTER PRAIRIE

2640 SET QUARTER SECTION POST MADE A MOUND OF
EARTH & SOD & C

5280 SET POST CORNER SECTIONS 24 & 25 IN PRAIRIE
MADE A MOUND OF EARTH & SOD. LAND ROLLING.
SECOND RATE B W & BUR OAK. LAST HALF DRY
PRAIRIE RED ROOT ROSE WILLOW GRASS.

1833 HARRISON WEST BET 30 & 31

165 LEFT TIM. & ENTER PRAIRIE

2145 LEFT PRAIRIE & ENTER TIM.

2640 TEMPY 1/4 P

3234 BROOK 3.3' CRS SW

5297.16 INT. W. BDY AT P & ESTABLISHED COR TO SECS 30 &
31 BEARINGS {W.O. 14 N85W 99' W.O. 24 S73E
119.46' LAND ROLLING 1ST RATE WITH LYNN ASPEN
HICKY, WALNUT, BURR & W.O.

COR EAST

2657.16 QUARTER SEC COR {RED O 20 N23E 23.1' ASPEN
16 S5E 9.9'

5297.16 SEC COR

1833 HARRISON ORIG PLAT SE TO SW COR SEC 25 5300.46'.

1834 MILLER (MARCH)

EAST RANDOM BETWEEN SECS 25 & 36 T2N R10E

1848 ENT. MARSH S.W.

2858.46 TRAIL N.W.

3960 ENTER TIMBER

5300.46 INTERSECT RANGE LINE OF 21.12' SOUTH OF P.
LAND SAME

WEST CORRECTED BETWEEN SECS 25 & 30

2649.90 SET 1/4 SEC POST IN MARSH BUR O 18 S30E
488.40'

5300.46 SEC COR

1844 PEASE TWP RD RECORDS BK 1 PG 4 COMMENCING AT THE
CORNERS OF SEC 26,27,34 AND 35, IN T2N R11E AND
RUNNING WEST ON THE LINE BETWEEN SECTIONS 27 & 34,
2622.84'. SET POST WHERE OLD 1/4 POST ON SAID LINE
STOOD BURNT STUMP OF WHITE OAK BEARS N5W 13.86' AND
S88E 73.92'; THENCE WEST ON SAID LINE 2622.84' TO THE
CORNER OF SEC 27,28,33, & 34, SET POST WHITE OAK 24
INCHES IN DIA BEARS S35E 114.18', BURNT STUMP OF BASS
WOOD 24" N78E 86.46'; THENCE WEST ON LINE BETWEEN
SECS 28 AND 33 TO CORNER OF SEC 28,29,32 & 33 5224.5'
SETTING POST IN OLD MOUND; THENCE WEST ON LINE
BETWEEN SECTIONS 29 & 32, 2652.8' SET POST BY BLACK
OAK 24 INCH BEARS N26E 27.06'; THENCE WEST ON THE LINE
BEFORE SAID 2642.64' TO THE COR OF SEC 29,30,31 & 32,
BLACK OAK BEARS N41E 78? AND N22W 97.02'; THENCE WEST
OF LINE BETWEEN SEC 30 & 31, 5297.16' TO THE LINE
BETWEEN RANGES 10 & 11 EAST 4 MILES AND 5.94'. SAID RD
EXTENDS 33' ON EACH SIDE OF THE ABOVE LINE.

1868 LOCKE PG 63 WEST BETWEEN SECS 30 AND 31 VAR 7-20

2244 SET OFF 14.52' NORTH

2508 SET OFF 36.96' NORTH

1-03-03

SHEET 1 OF 4 CORNER CODE V-1

Donald Eaves

PL601

2641.98 INTERSECTED 1/4 LINE 3.3' SOUTH OF COR. FOUND NORTH BT AND WHERE SOUTH B.T. WAS DUG OUT AND LARGE LIMESTONE ON COR. IN HIGHWAY AND IN LINE WITH FENCE RUNNING SOUTH. VAR CORRECTED 6-09
SET OFF 6.6' NORTH OF 1/4 COR & CONTINUED WEST WITH VAR 7-08

3158.1 CENTER OF BRIDGE 9.24' WIDE
3532.32 CENTER OF SLUICE BRIDGE
4422 SET OFF 5.28' NORTH
5311.02 INTERSECTED WEST BOUNDARY 22.77' SOUTH OF COR. FOUND B.T.S IN SECS 30 AND 31 AND 35 AND 36 AND OLD STAKE VAR CORRECTED IS 6-23 BT IN 31 IS S67E BT IN 25 IS 96.36' & BT IN 36 IS 126.72' SETP 10, 1868
PG 64 NORTH ON WEST LINE SEC 30 VAR 7-30

0 SET OFF 3.63' EAST

1987.26 CENTER OF BRIDGE 6.6' WIDE
2517.24 CENTER OF BRIDGE 5.28' WIDE
2617.56 INTERSECTED 1/4 LINE 2.97' EAST OF COR. FOUND LARGE LIMESTONE AND UNDERNEATH AN OLD STAKE. SET IN HIGHWAY IN LINE OF E & W FENCES AND 27.72' EAST OF COR. POST TO WEST FENCE. VAR CORRECTED 7-29
CONTINUED NORTH FROM 1/4 COR WITH VAR 7-30

3366 SET OFF 14.52' EAST
5251.95 INTERSECTED NORTH BOUNDARY 4.95' EAST FOUND WHERE OLD STAKE WAS PULLED OUT AND STRONGLY MARKED INDICATIONS OF PIT 4FT S.E. COR IN CENTER OF HIGHWAY & IN LINE WITH FENCE FUNNING WEST AND NEARLY IN LINE WITH FENCE RUNNING EAST. VAR CORRECTED 7-17 SEPT 10 1868
PG 72 SOUTH ON WEST LINE SEC 31 VAR 7-30

1382.7 SMALL BROOK
1521.3 SMALL BROOK
2631.42 INTERSECTED 1/4 LINE 12.87' EAST OF COR. FOUND B.T.S COR IN CENTER OF ROAD AND 6.6' NORTH OF E AND W FENCES. VAR CORRECTED 7-13
SET OFF FROM 1/4 COR .66' WEST AND CONTINUED SOUTH WITH VAR 7-20

4092 SET OFF 9.57' WEST
5267.79 INTERSECTED SOUTH BOUNDARY 3.96' WEST OF COR. FOUND NORTH BT AND WHERE SOUTH BT WAS DUG OUT AND LARGE LIMESTONE ON COR. COR IN CENTER OF HIGHWAY. VAR CORRECTED 7-13

1912 KERCH VOL 3 PG 72 FD MON. SURROUNDED IT WITH HHS
1937 SUNNY VOL 3 PG 356 DUG 8X12X4' DEEP HOLE. FD NOTHING. EAST 2669 TO N/S FENCE; FENCE IS 2642 WEST OF FD MON AT SE COR SEC 30

1962 BATTERMAN VOL 4 PG 116 SET TIES. NOTE: REF TO COR GIVEN BY C. SHIMEALL.

1996 BARNES VOL 6 PG 446 N89-44-46E 2668.58 TO S 1/4 COR SEC 30, N1-17-59W 2618.88 TO W 1/4 COR SEC 30, S1-02-58E

SHEET 2 OF 4 CORNER CODE V-1

1-03-03
Donald Barnes

PL601

2630.78 TO W 1/4 COR SEC 31, 2653.25 TO S 1/4 COR SEC 25
SPRING VALLEY, ANGLE OF 91-02-45 AT SW COR SEC 30 FROM
W 1/4 COR SEC 30 TO S 1/4 COR SEC 30, ANGLE OF 89-
12-16 AT SW COR SEC 30 FROM S 1/4 COR SEC 30 TO W 1/4 COR
SEC 31.

1996 BARNES V-25 (SPRING VALLEY) FB #3 PG 61 FD CUT L.S.
1.8' DEEP & 3.2' WEST OF CENTER OF PVMT. PLACED
MAGNET ON SE COR SEC L.S. MON IS ON LINE WITH SOUTH
PVMT EDGE OF THAT IS TO THE WEST. REFERENCED SAME.

FD OLD TRAV. STATION & REFERENCE MONUMENTS.

C) Was the corner restored through acceptance of (1) an obliterated evidence location, or, (2) a found perpetuated location?

ACCEPTED CUT L.S.

D) Describe any material discrepancy between the location of the corner as restored or reestablished and the location of that corner as previously restored or reestablished by distance and direction. Show the discrepancy on the plan view drawing under (a), above. Show the distances between the corner as previously restored or reestablished and (1) the corner as restored or reestablished, and (2) to at least 4 of the witness monuments shown on the drawing in (a), above.

(E) Was the corner reestablished through lost corner proportionate methods? If so, show the method, including the directions and distances to other public land survey corners used as evidence or used for proportioning the corner location.

I, **Donald Barnes**, hereby certify that the corner location as identified by the corner code index was determined by me under my direction and control and that this U.S. Public Land Survey Monument Record is correct and complete to the best of my knowledge and belief.

1-03/03

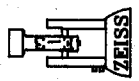
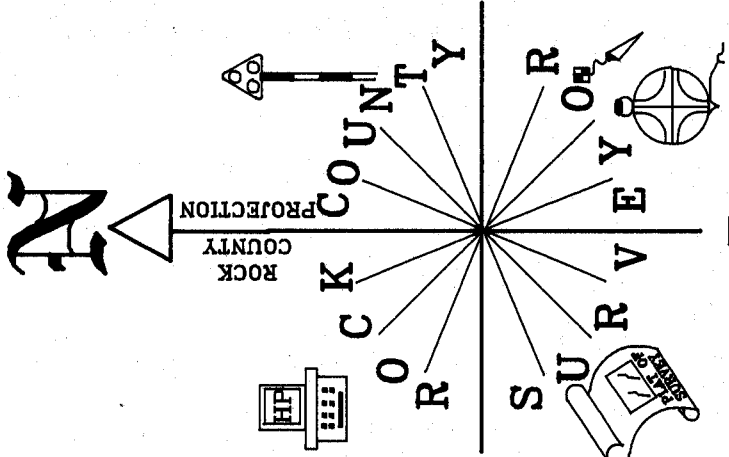
Seal
Donald Barnes
Emboss

SHEET 3 OF 4

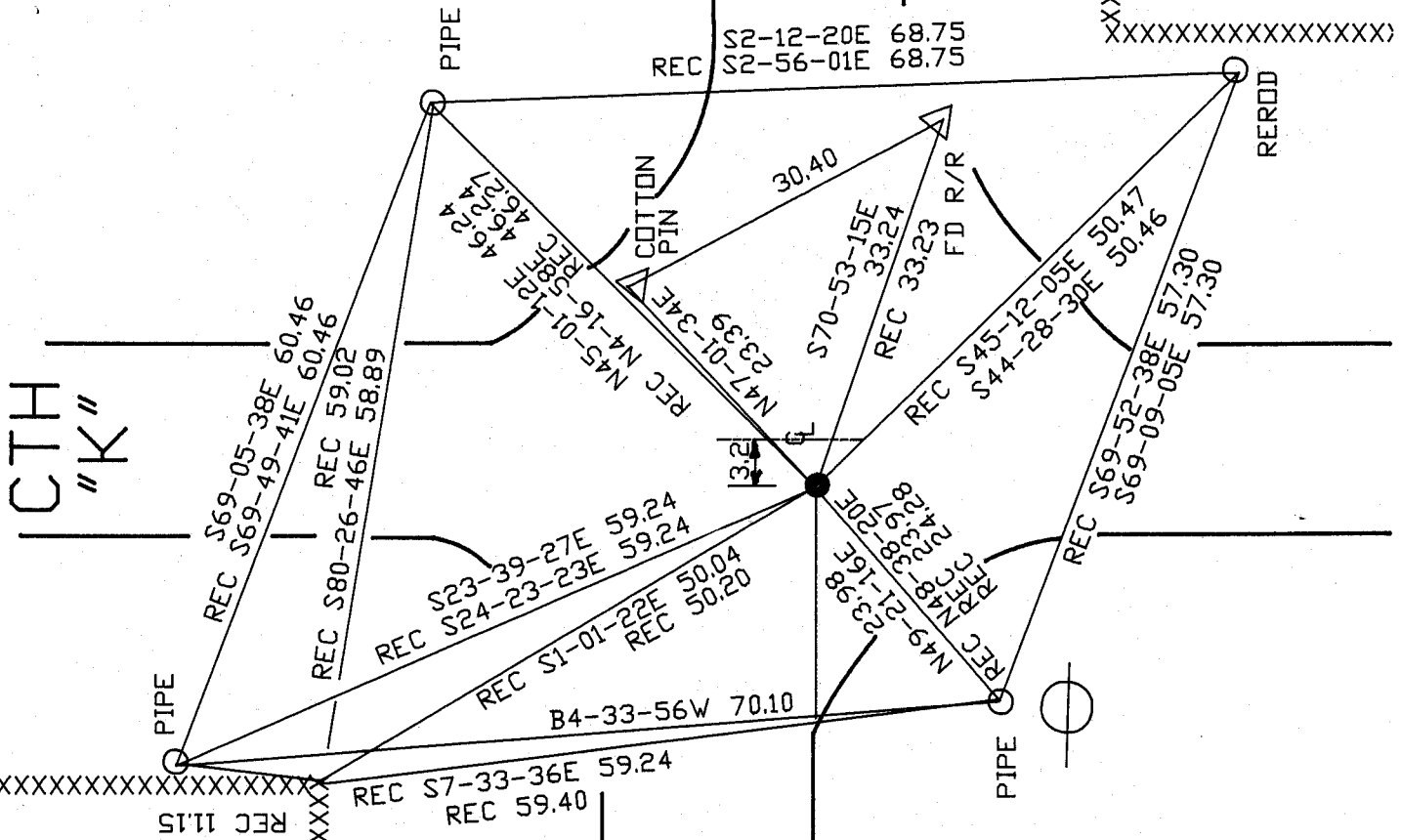
CORNER CODE

V-1

A-E 7.08 REQUIREMENT



XXXXXXXXXXXXXXXXXXXX
 OBSERVATION SHEETS 289 & 779
 FB #3 PG 61



CTH
 "K"

COTTON PIN:
 3' EAST OF EAST PVMT
 EDGE PROJECTED FROM NORTH
 & SOUTH, 3.5' NORTH
 OF NORTH PVMT EDGE
 PROJECTED WEST.

HAFEMAN RD

SW COR
 SEC 30
 PLYMOUTH TWP
 T2N R11E

● CUT LIMESTONE 1.8' DEEP
 / MAGNET

SHEET 4 OF 4

EMBOSSED
 SEAL

Donald Barnes
 1/03/03

V-1